

New Lane, Eccles

Manchester



£250,000



# 120 New Lane

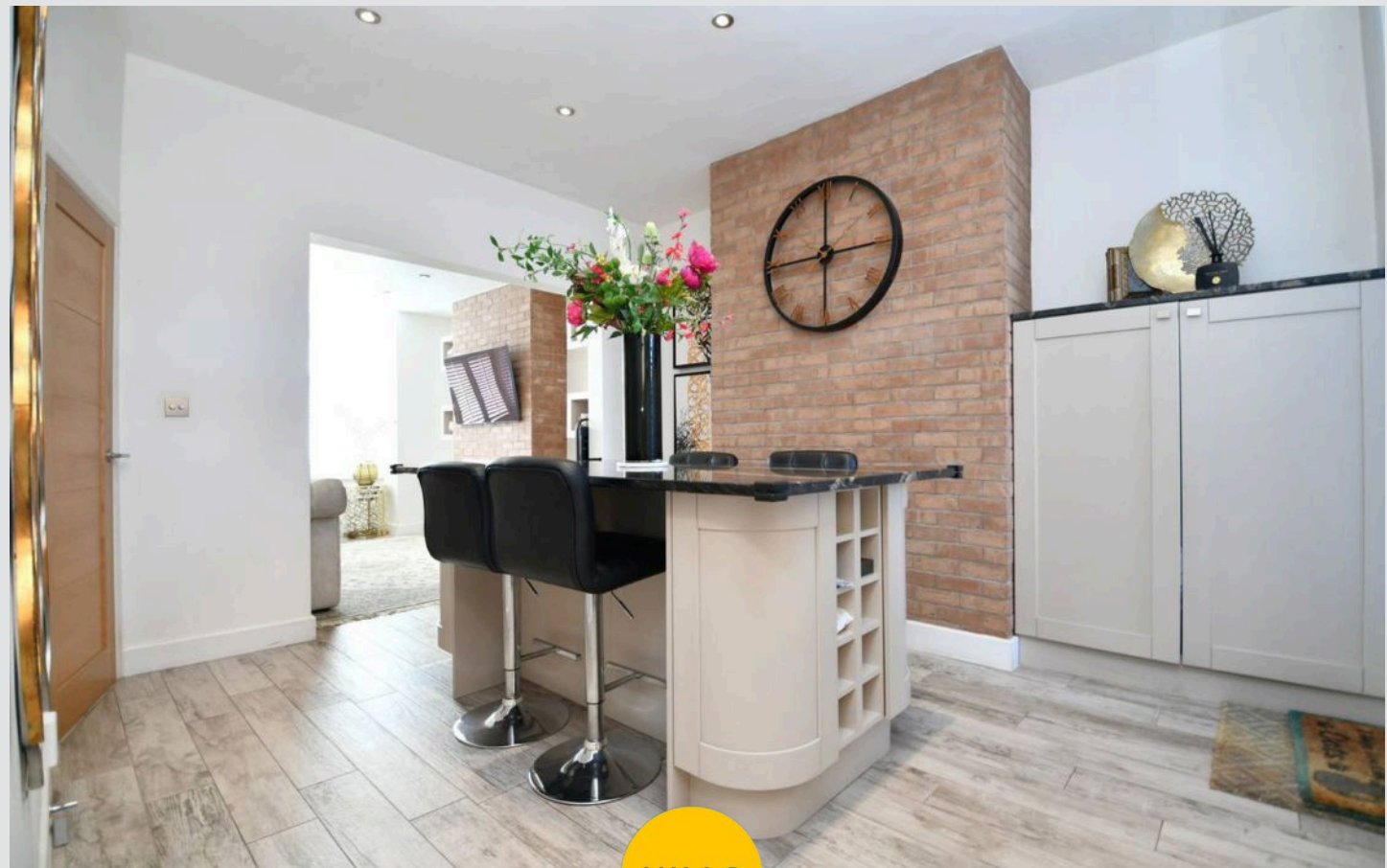
Eccles, Manchester

\*Beautifully Presented Three Bedroom, Bay-Fronted Period Property Located in a Popular Area, Boasting a Stylish Fitted Kitchen, an Island to the Dining Room and a HUGE Sun Drenched Rear Garden!\*

Council Tax band: A

Tenure: Freehold

- Beautifully Presented Three Bedroom Bay-Fronted Period Property
- Bay-Fronted Lounge and a Spacious Dining Room, with Brick Feature Walls
- Stylish Fitted Kitchen and a Contemporary Three-Piece Shower Room
- Three Well-Proportioned Bedrooms
- Large Sun Drenched Garden to the Rear
- Within Easy Access of Monton and Worsley Villages
- Close to Excellent Transport Links Throughout Manchester
- Early Viewing is Essential!



HILLS



## Entrance Hallway

## Lounge

11' 5" x 10' 5" (3.47m x 3.18m)

## Kitchen

12' 1" x 8' 0" (3.68m x 2.43m)

## Dining Room

13' 4" x 11' 4" (4.07m x 3.45m)

## Landing

## Master Bedroom

12' 7" x 11' 6" (3.83m x 3.50m)

## Bedroom Two

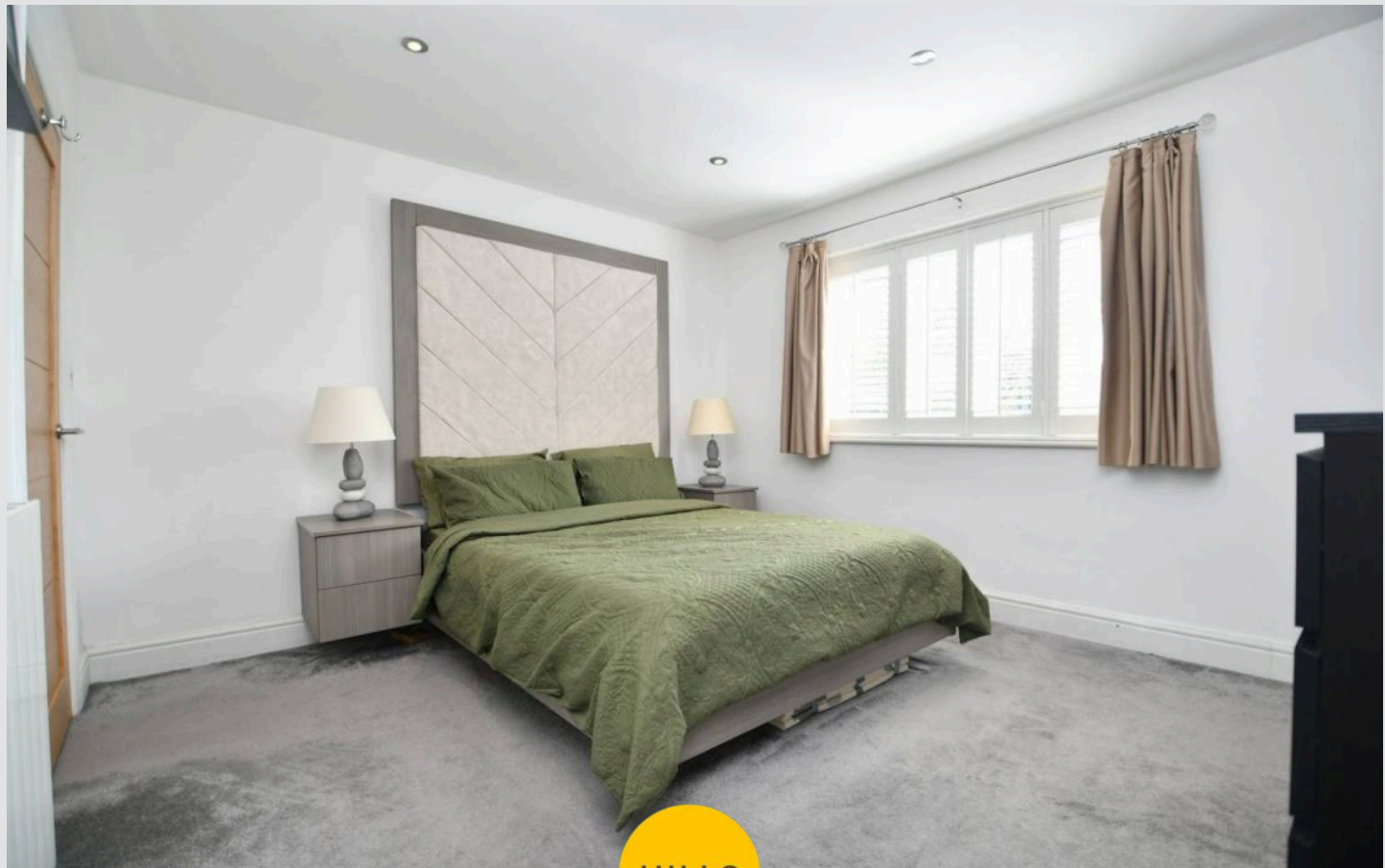
12' 11" x 7' 7" (3.93m x 2.32m)

## Bedroom Three

12' 4" x 8' 0" (3.77m x 2.43m)

## Shower Room

8' 11" x 5' 1" (2.71m x 1.54m)





### Entrance Hallway

### Lounge

11' 5" x 10' 5" (3.47m x 3.18m)

### Kitchen

12' 1" x 8' 0" (3.68m x 2.43m)

### Dining Room

13' 4" x 11' 4" (4.07m x 3.45m)

### Landing

### Master Bedroom

12' 7" x 11' 6" (3.83m x 3.50m)

### Bedroom Two

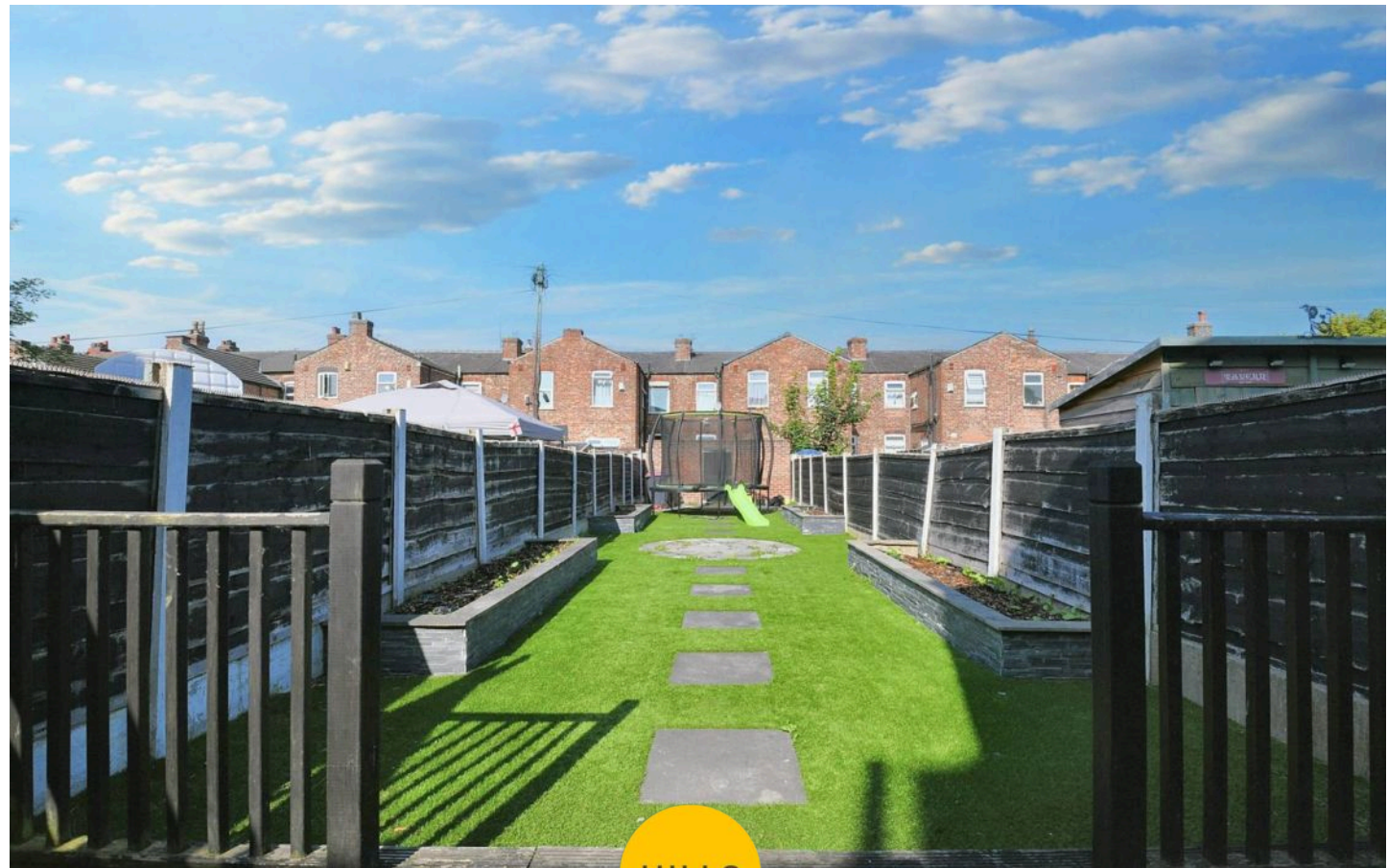
12' 11" x 7' 7" (3.93m x 2.32m)

### Bedroom Three

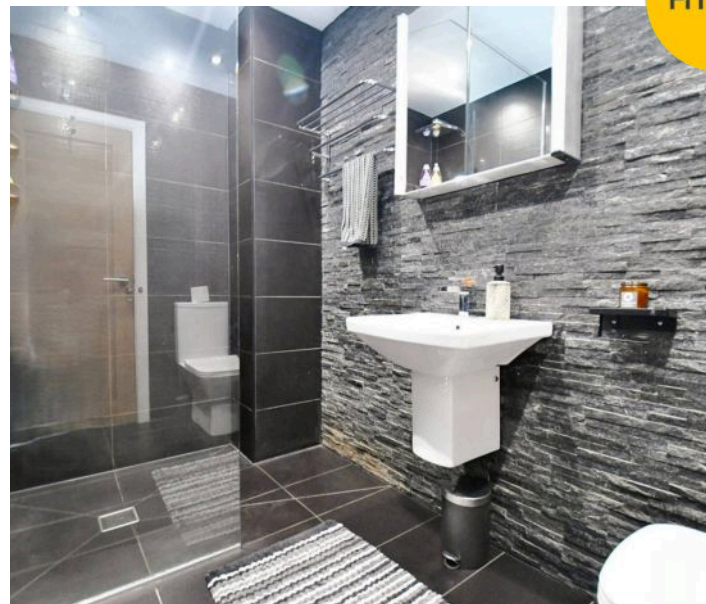
12' 4" x 8' 0" (3.77m x 2.43m)

### Shower Room

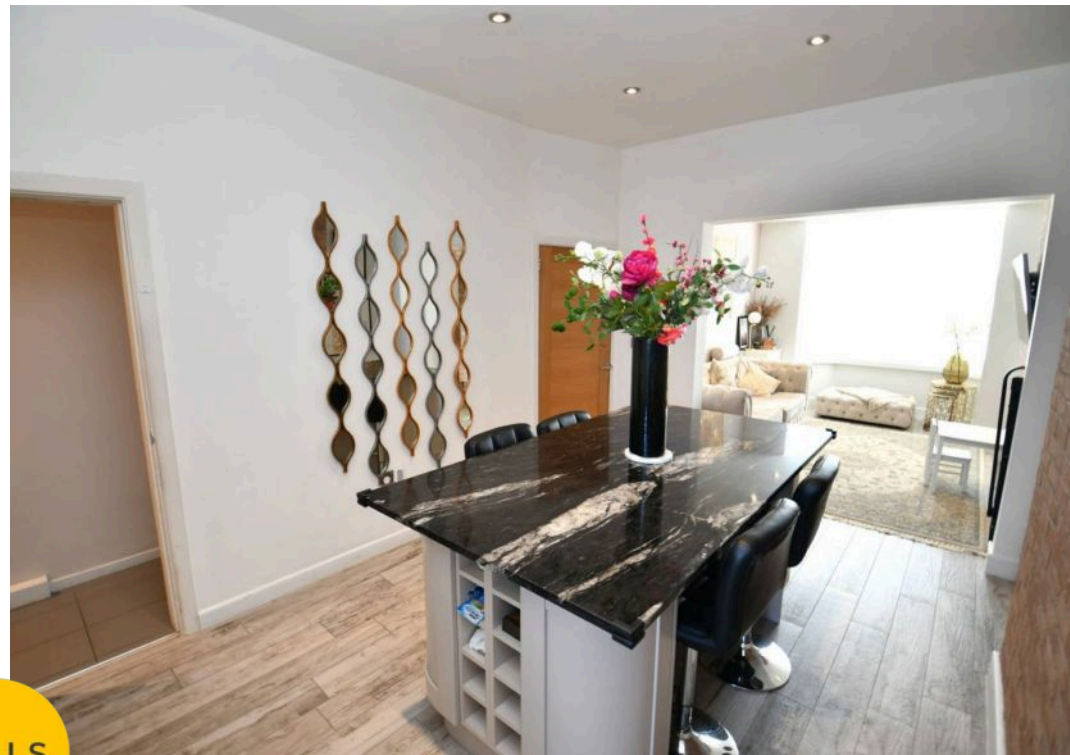
8' 11" x 5' 1" (2.71m x 1.54m)



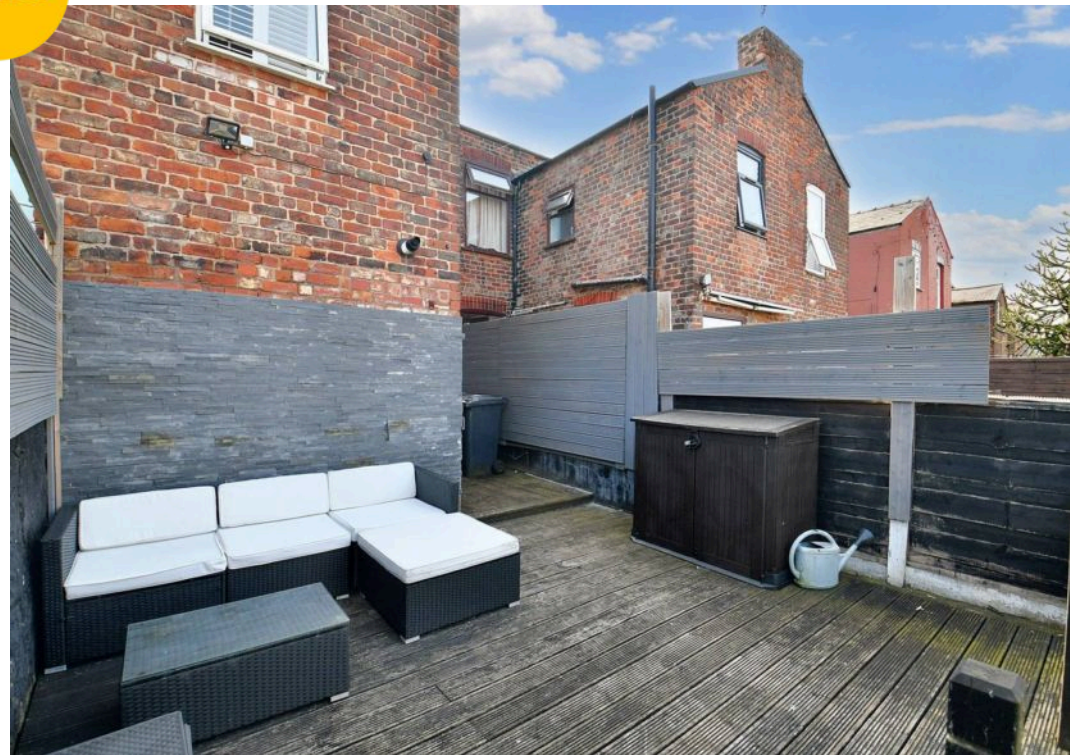
HILLS

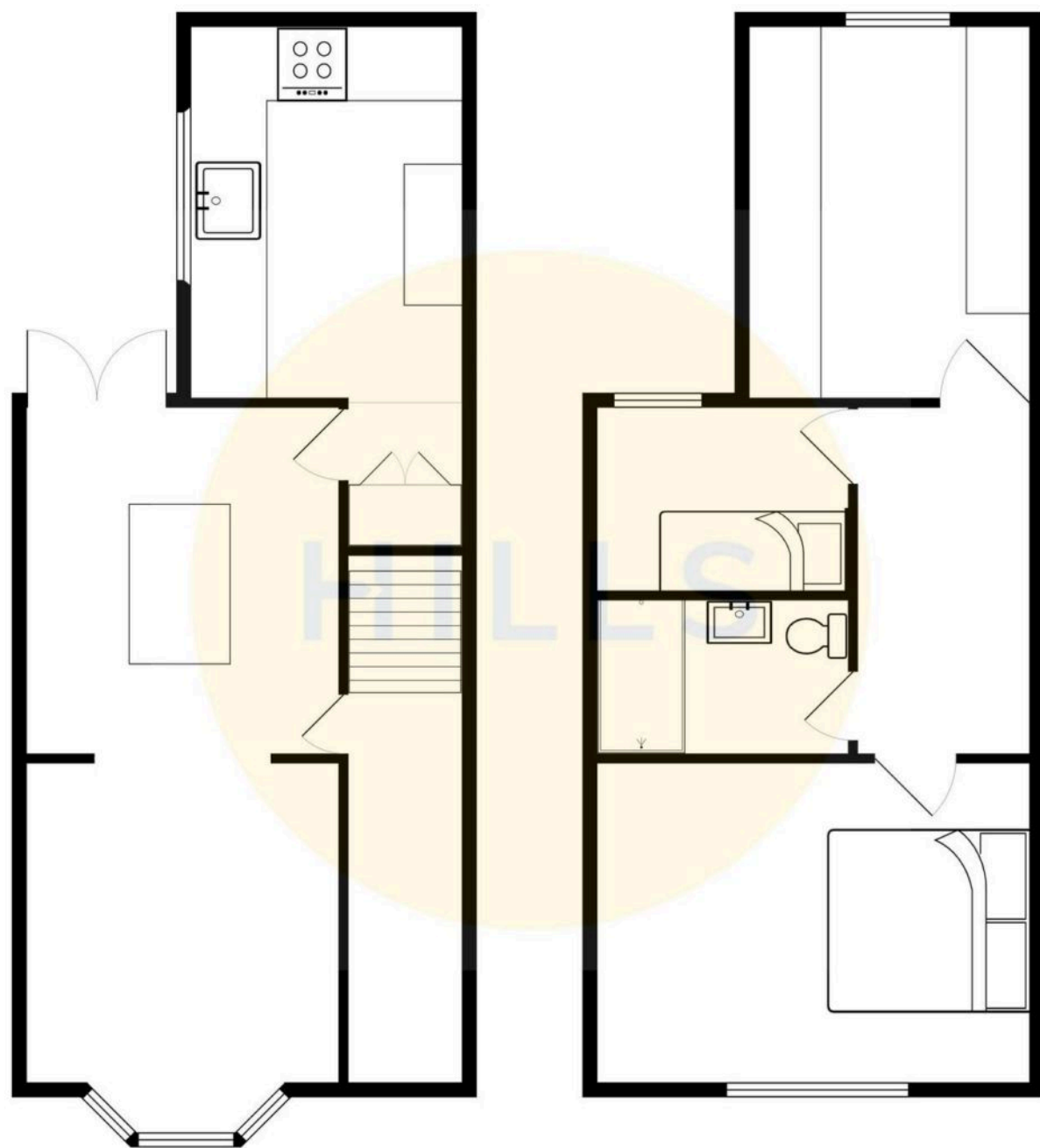






HILLS









## Hills | Salfords Estate Agent

Hills Residential, Sentinel House Albert Street – M30 0SS

0161 707 4900

[sales@hills.agency](mailto:sales@hills.agency)

[www.hills.agency/](http://www.hills.agency/)



THE PROPERTY MISDESCRIPTIONS ACT 1991 The Agent has not tested any apparatus, equipment, fixtures and fittings or services and so cannot verify that they are in working order or fit for the purpose. A Buyer is advised to obtain verification from their Solicitor or Surveyor. References to the Tenure of a Property are based on information supplied by the Seller. The Agent has not had sight of the title documents. A Buyer is advised to obtain verification from their Solicitor. You are advised to check the availability of this property before travelling any distance to view. Every effort and precaution has been made to ensure these particulars are correct and not misleading but their accuracy is not guaranteed nor do they form part of any contract. If there is any point which is of particular importance to you, please contact us and we will provide any information you require. This is advisable, particularly if you intend to travel some distance to view the property. The mention of any appliances and services within these details does not imply that they are in full and efficient working order. These particulars are in draft form awaiting Vendors confirmation of their accuracy. These details must therefore be taken as a guide only.