

Kiel Close, Eccles

Manchester



Offers Over £260,000

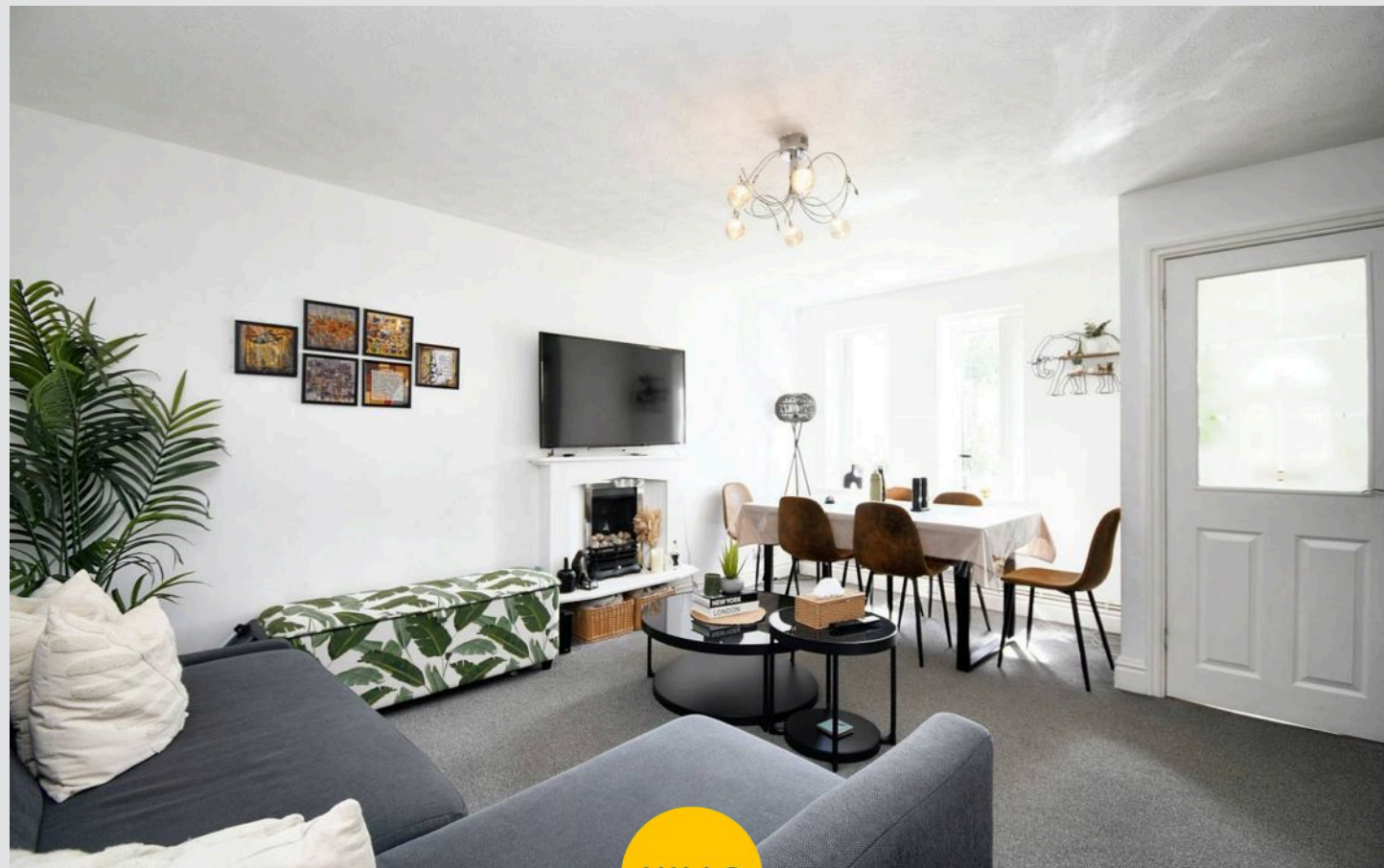
Kiel Close

Eccles, Manchester

Inviting property in popular M30 area, with spacious lounge, dining area, kitchen diner, three bedrooms, off-road parking, front and rear gardens. Located near Trafford Centre and amenities. Ideal for first-time buyers, families, or investors. No onward chain. Council Tax band: C

Tenure: Leasehold

- Located on a Popular Development within M30 and Offered to the Market with No Onward Chain
- Spacious Lounge and Dining Space
- Fitted Kitchen Diner
- Three Spacious Bedrooms
- Three Piece Bathroom Suite & Guest W.C.
- Off Road Parking for Multiple Cars to the Front as well as Gardens to the Front and Private Rear
- Situated within Walking Distance to The Trafford Centre & Many More Amenities
- Surrounded by Brilliant Public Transport & Motorway Links



HILLS



Entrance Hallway

Lounge

15' 5" x 14' 4" (4.70m x 4.37m)

Kitchen

14' 5" x 8' 4" (4.39m x 2.54m)

Downstairs W.C.

7' 2" x 2' 6" (2.18m x 0.76m)

Landing

Bedroom One

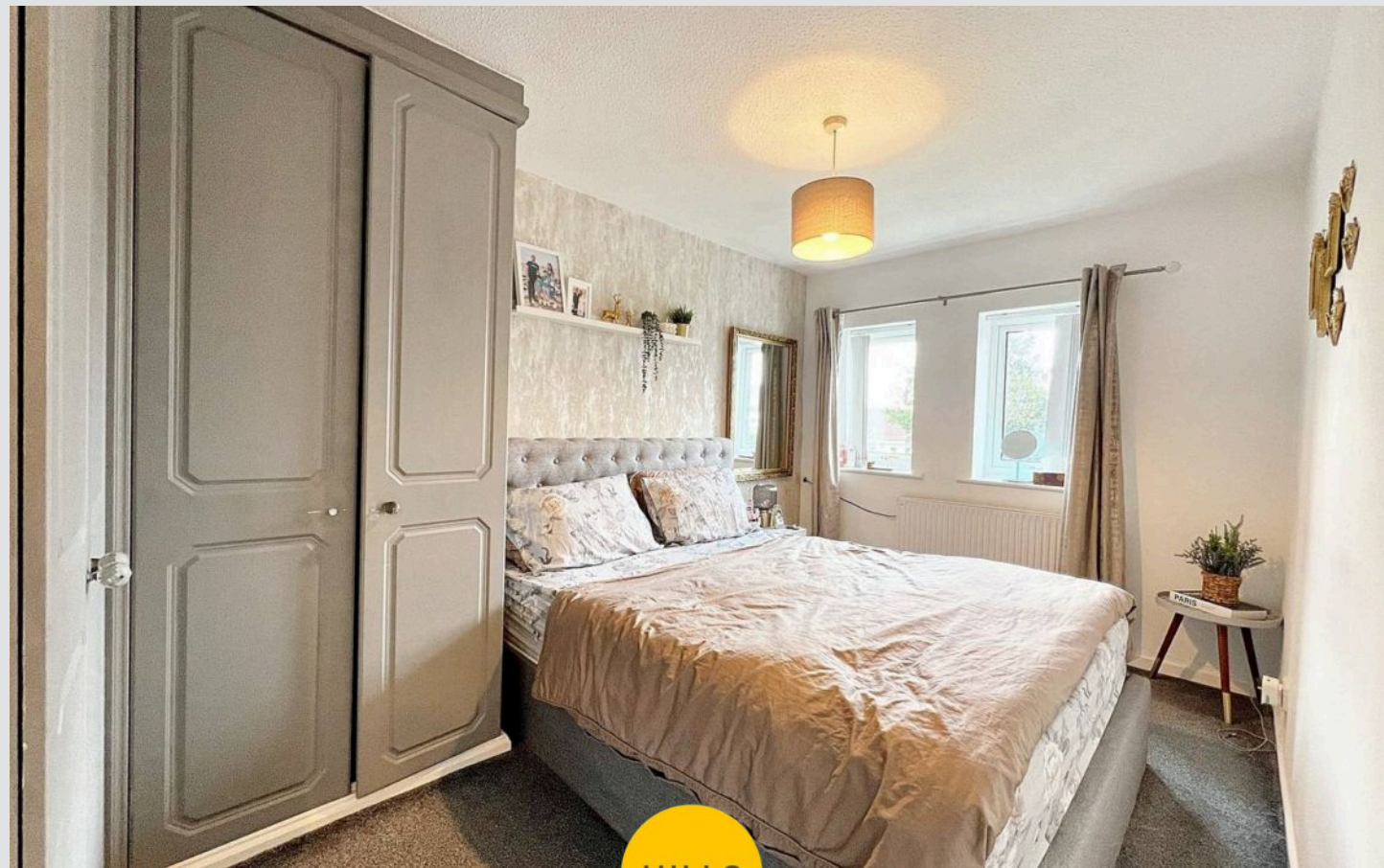
13' 9" x 8' 4" (4.19m x 2.54m)

Bedroom Two

10' 1" x 8' 3" (3.07m x 2.51m)

Bathroom

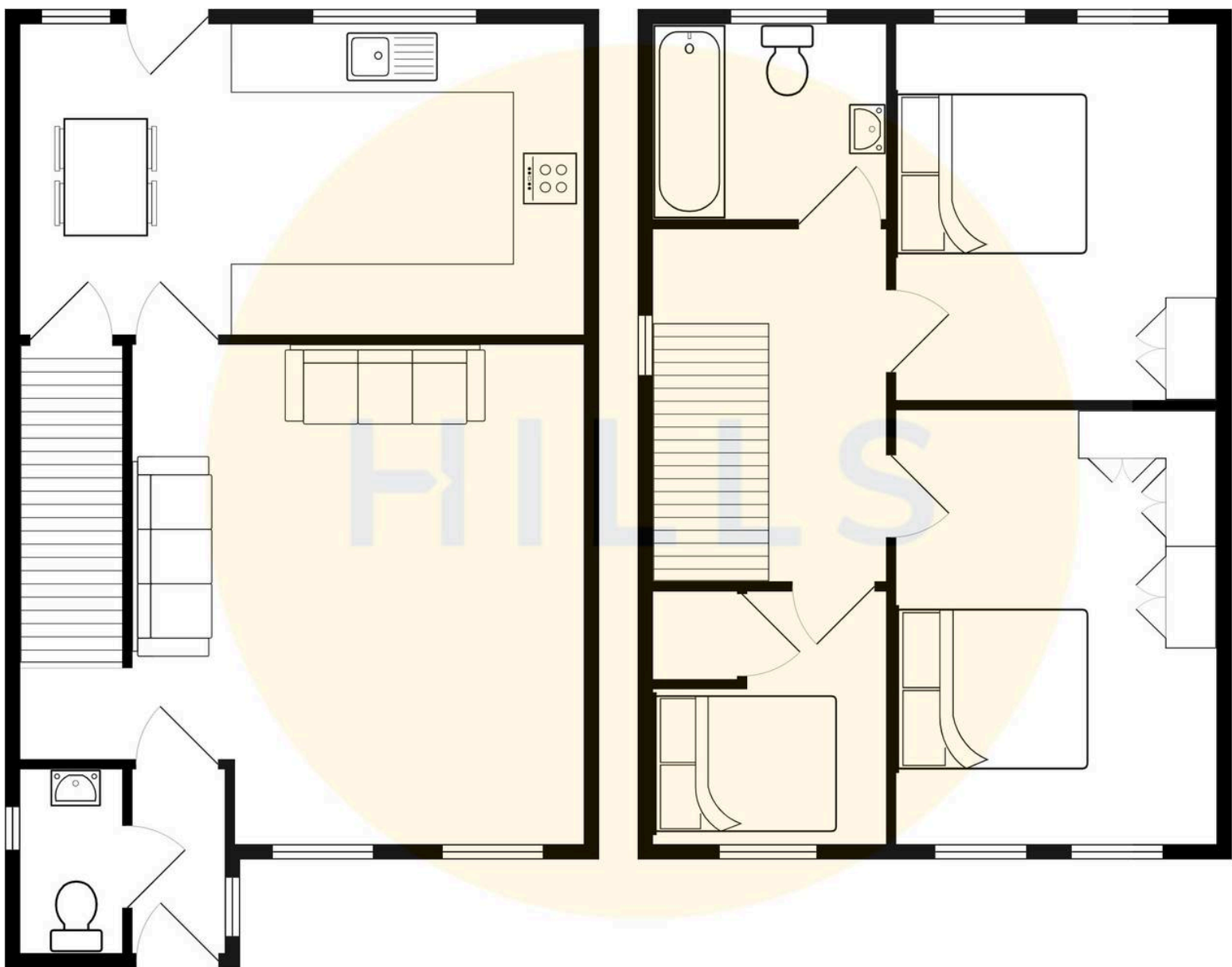
6' 7" x 5' 5" (2.01m x 1.65m)





HILLS







Hills | Salfords Estate Agent

Hills Residential, Sentinel House Albert Street – M30 0SS

0161 707 4900

sales@hills.agency

www.hills.agency/



THE PROPERTY MISDESCRIPTIONS ACT 1991 The Agent has not tested any apparatus, equipment, fixtures and fittings or services and so cannot verify that they are in working order or fit for the purpose. A Buyer is advised to obtain verification from their Solicitor or Surveyor. References to the Tenure of a Property are based on information supplied by the Seller. The Agent has not had sight of the title documents. A Buyer is advised to obtain verification from their Solicitor. You are advised to check the availability of this property before travelling any distance to view. Every effort and precaution has been made to ensure these particulars are correct and not misleading but their accuracy is not guaranteed nor do they form part of any contract. If there is any point which is of particular importance to you, please contact us and we will provide any information you require. This is advisable, particularly if you intend to travel some distance to view the property. The mention of any appliances and services within these details does not imply that they are in full and efficient working order. These particulars are in draft form awaiting Vendors confirmation of their accuracy. These details must therefore be taken as a guide only.