



Chichester Lane, Eccles

Manchester



In Excess of £275,000



# Chichester Lane

Eccles, Manchester

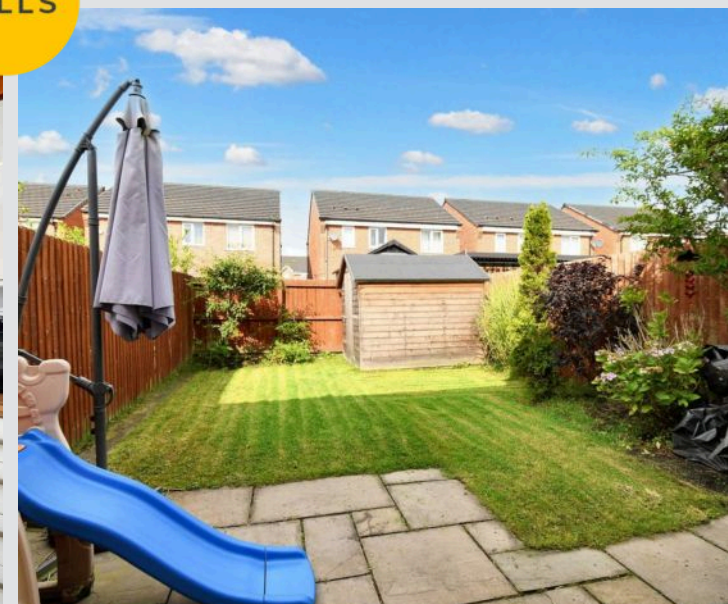
Fabulous three bed semi-detached in Winton, overlooking Bridgewater Canal. Spacious lounge, sleek kitchen, guest bathroom. Three bedrooms, modern bathroom upstairs. Off-road parking, sun filled rear garden. Close to Monton Village and Patricroft train station. Perfect for families or first-time buyers.

Council Tax band: C

- Located on the Desirable Bridgewater Development just a Short Walk to Monton Village
- Perfect First Time Buy
- Spacious Lounge
- Modern High Gloss Fitted Kitchen and Dining Space
- Three Bedrooms
- Three Piece Bathroom Suite and Guest W.C.
- Off Road Parking for Multiple Cars & Rear Garden Benefitting from the Sun all day



HILLS





### Entrance Hallway

### Lounge

14' 9" x 13' 1" (4.50m x 3.99m)

### Kitchen / Diner

14' 8" x 9' 1" (4.47m x 2.77m)

### Landing

### Bedroom One

11' 8" x 8' 2" (3.56m x 2.49m)

### Bedroom Two

10' 4" x 8' 2" (3.15m x 2.49m)

### Bedroom Three

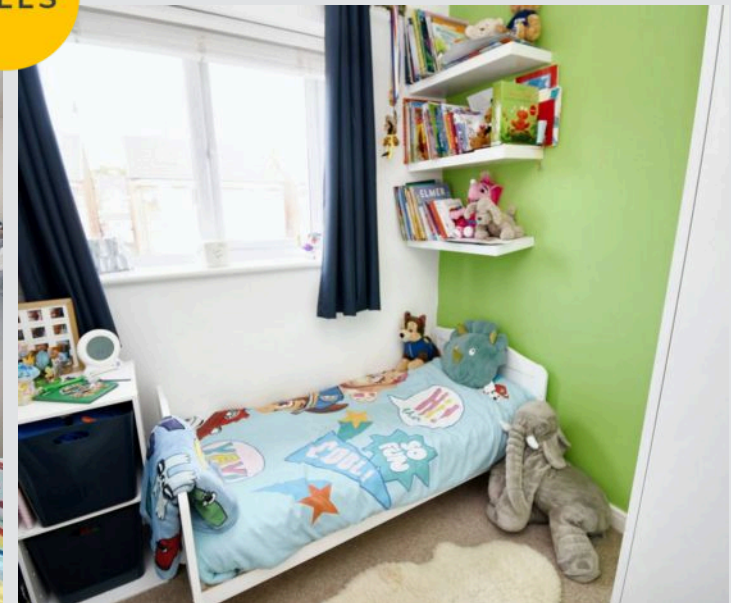
6' 5" x 6' 4" (1.96m x 1.93m)

### Bathroom

6' 4" x 6' 1" (1.93m x 1.85m)



HILLS

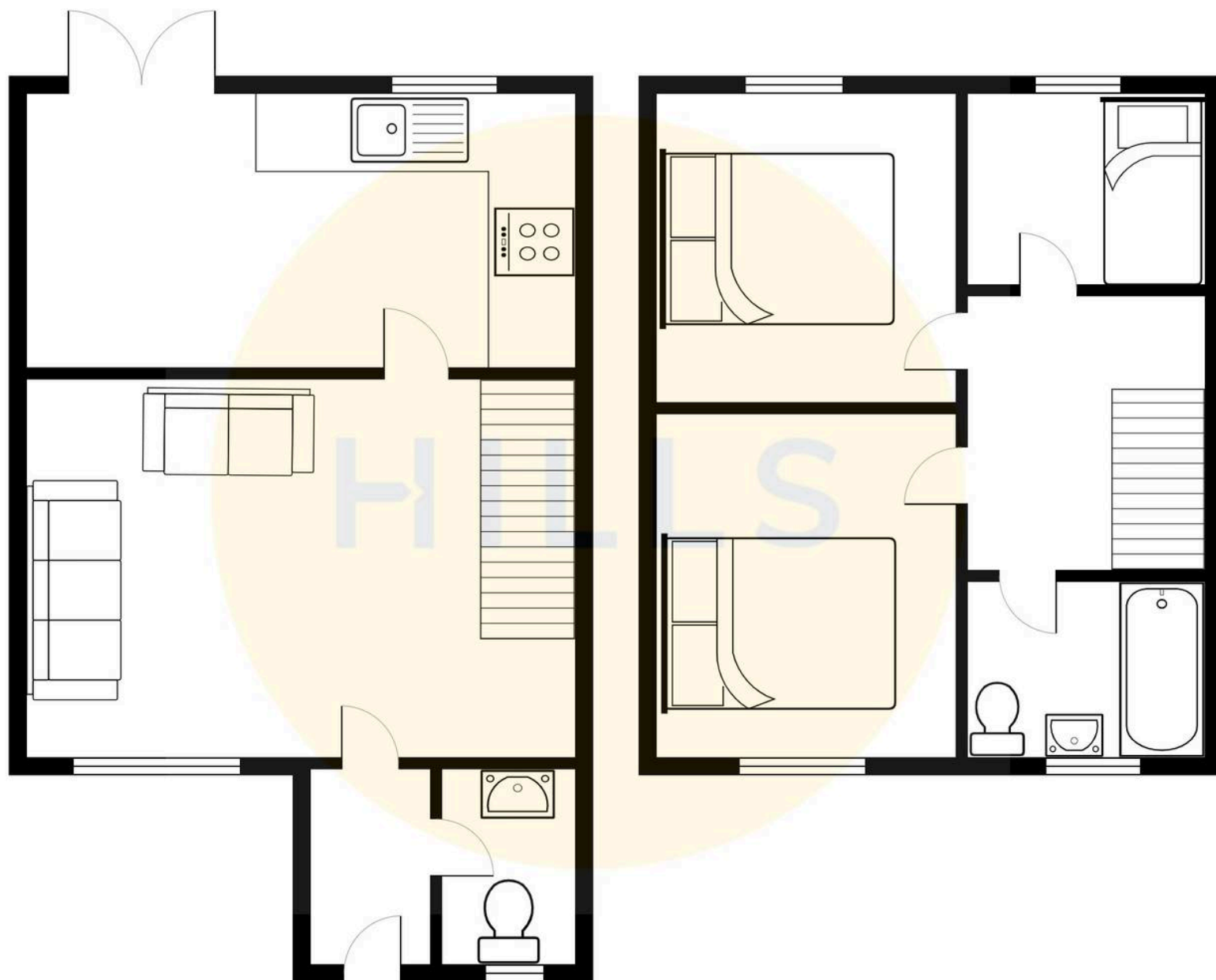






HILLS









## Hills | Salfords Estate Agent

Hills Residential, Sentinel House Albert Street – M30 0SS

0161 707 4900

[sales@hills.agency](mailto:sales@hills.agency)

[www.hills.agency/](http://www.hills.agency/)



THE PROPERTY MISDESCRIPTIONS ACT 1991 The Agent has not tested any apparatus, equipment, fixtures and fittings or services and so cannot verify that they are in working order or fit for the purpose. A Buyer is advised to obtain verification from their Solicitor or Surveyor. References to the Tenure of a Property are based on information supplied by the Seller. The Agent has not had sight of the title documents. A Buyer is advised to obtain verification from their Solicitor. You are advised to check the availability of this property before travelling any distance to view. Every effort and precaution has been made to ensure these particulars are correct and not misleading but their accuracy is not guaranteed nor do they form part of any contract. If there is any point which is of particular importance to you, please contact us and we will provide any information you require. This is advisable, particularly if you intend to travel some distance to view the property. The mention of any appliances and services within these details does not imply that they are in full and efficient working order. These particulars are in draft form awaiting Vendors confirmation of their accuracy. These details must therefore be taken as a guide only.