



Chelmer Way, Eccles

Manchester



Offers in Region of £280,000



# Chelmer Way

Eccles, Manchester

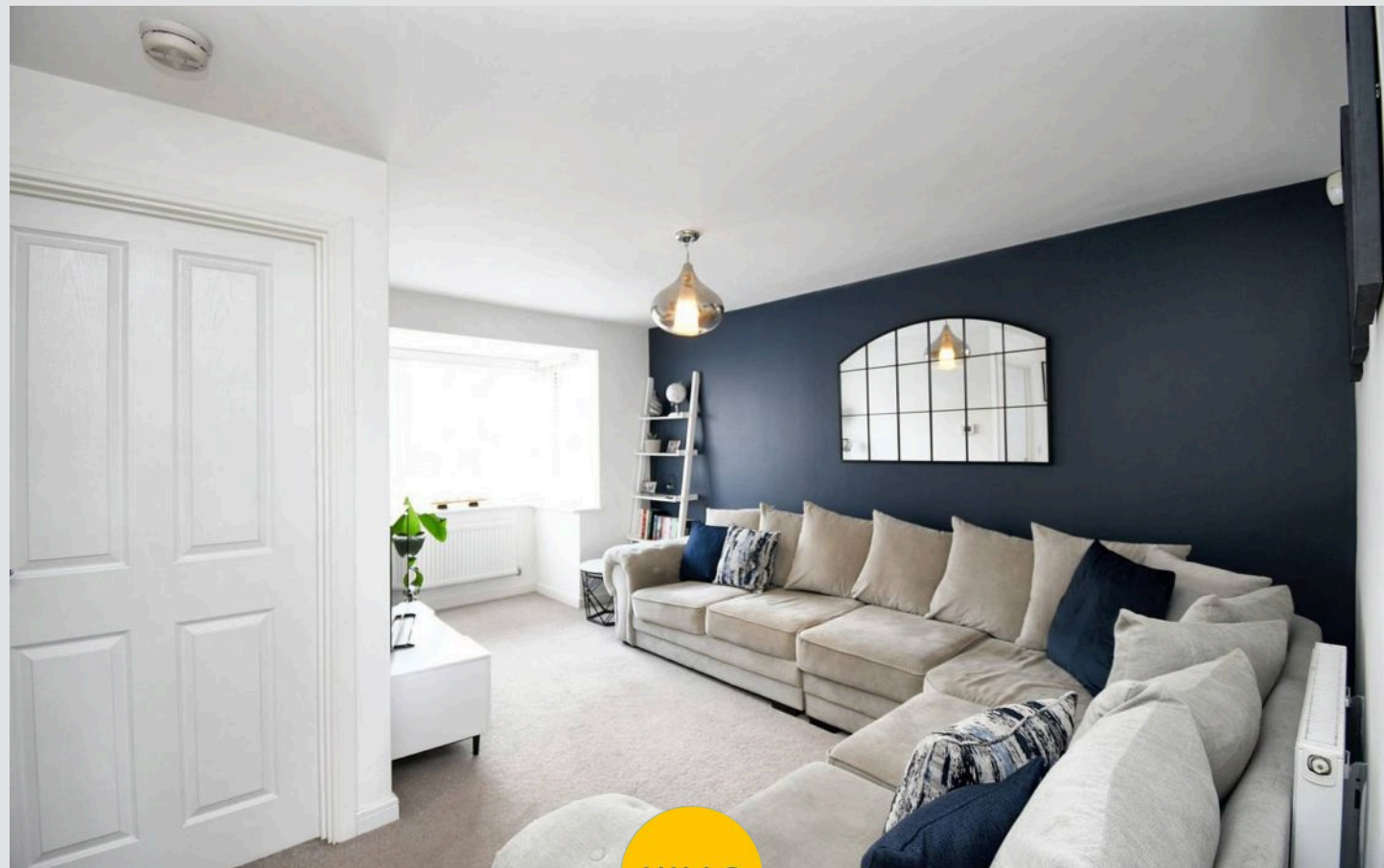
Stunning three bed property in Bridgewater Development. Bay fronted lounge, open plan kitchen/dining, en suite master, off-road parking, low-maintenance garden. Ideal family home near schools, Monton Village, parks, and transport links.

Perfect

Council Tax band: C

Tenure: Freehold

- Located on the Desirable Bridgewater Development
- Bay Fronted Lounge
- Open Plan Fitted Kitchen & Dining Space
- Three Generous Bedrooms
- Three Piece Family Bathroom, En Suite to Master & Guest W.C.
- Off Road Parking for Multiple Cars
- Low Maintenance Rear Garden with Artificial Lawn
- Within Catchment for Highly Sought After Schooling
- Short Walk down the Scenic Bridgewater Canal to Monton Village



HILLS



### Entrance Hallway

### Lounge

15' 7" x 15' 4" (4.76m x 4.68m)

### Kitchen / Diner

15' 7" x 10' 0" (4.76m x 3.04m)

### Downstairs W.C.

5' 7" x 3' 1" (1.70m x 0.94m)

### Landing

### Bedroom One

12' 1" x 9' 5" (3.68m x 2.88m)

### En suite

5' 4" x 5' 9" (1.62m x 1.74m)

### Bedroom Two

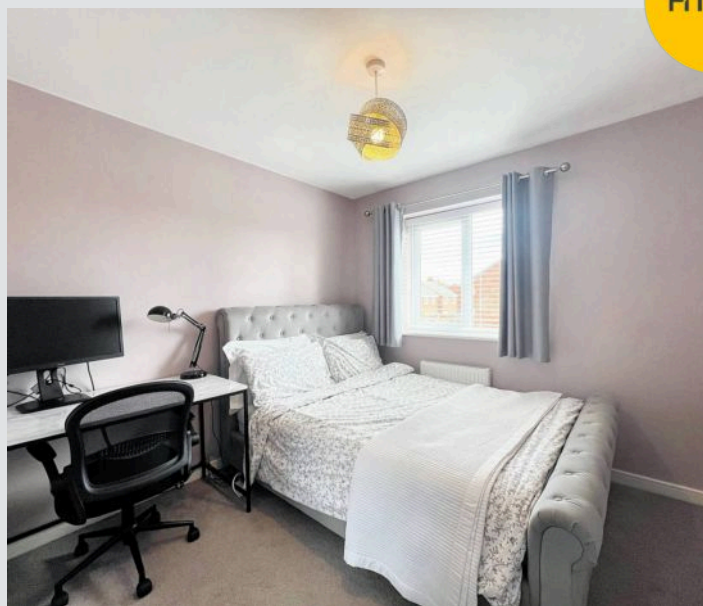
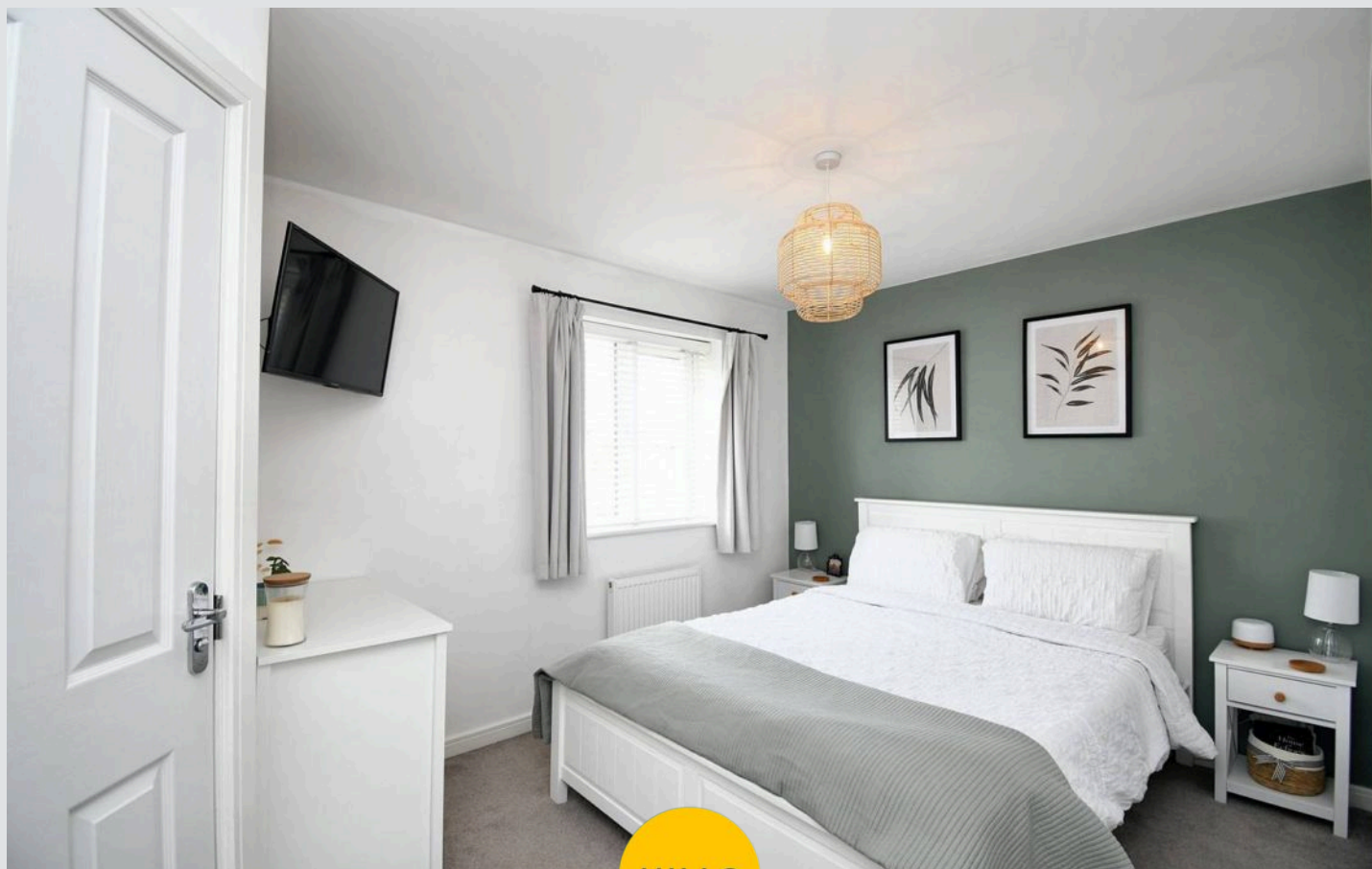
8' 9" x 8' 8" (2.67m x 2.65m)

### Bedroom Three

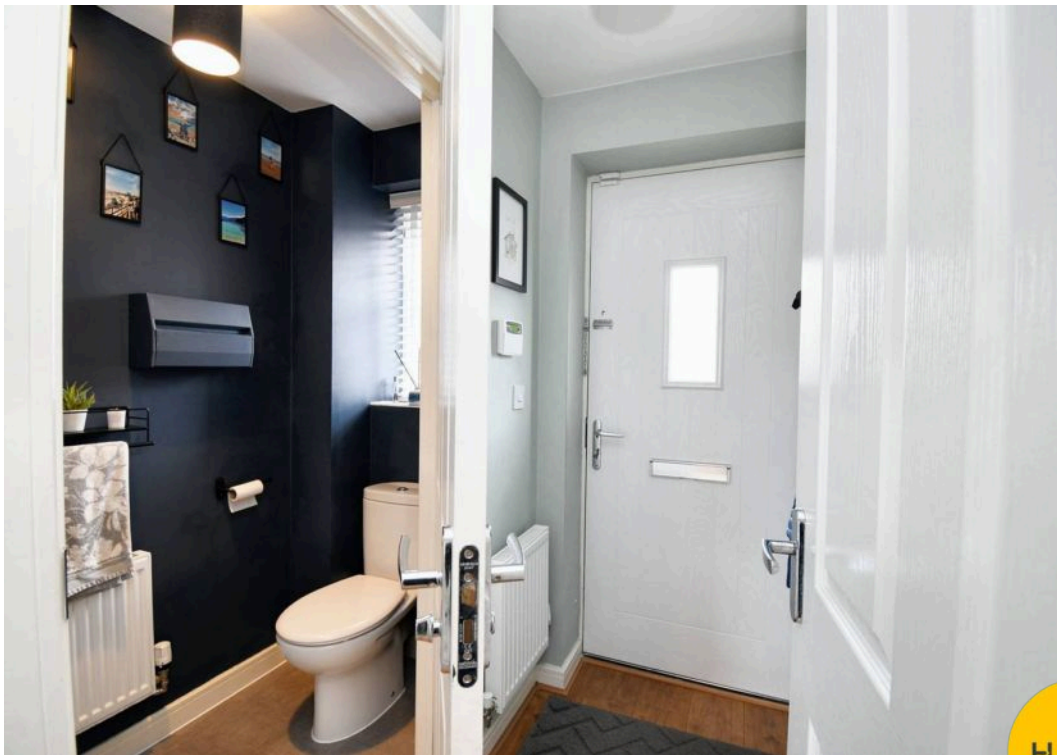
6' 11" x 8' 8" (2.10m x 2.65m)

### Bathroom

5' 11" x 5' 6" (1.80m x 1.68m)

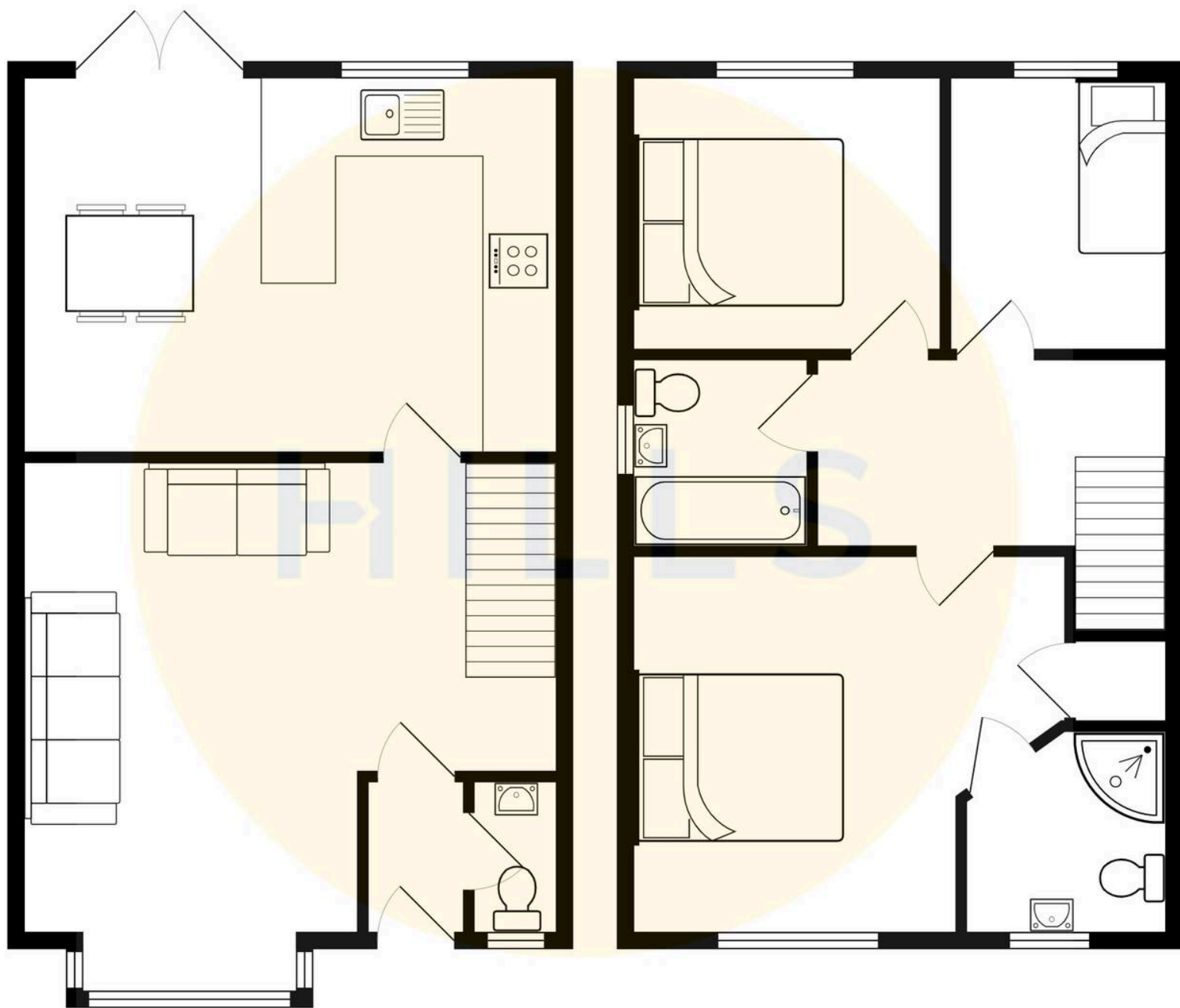






HILLS









## Hills | Salfords Estate Agent

Hills Residential, Sentinel House Albert Street – M30 0SS

0161 707 4900

[sales@hills.agency](mailto:sales@hills.agency)

[www.hills.agency/](http://www.hills.agency/)



THE PROPERTY MISDESCRIPTIONS ACT 1991 The Agent has not tested any apparatus, equipment, fixtures and fittings or services and so cannot verify that they are in working order or fit for the purpose. A Buyer is advised to obtain verification from their Solicitor or Surveyor. References to the Tenure of a Property are based on information supplied by the Seller. The Agent has not had sight of the title documents. A Buyer is advised to obtain verification from their Solicitor. You are advised to check the availability of this property before travelling any distance to view. Every effort and precaution has been made to ensure these particulars are correct and not misleading but their accuracy is not guaranteed nor do they form part of any contract. If there is any point which is of particular importance to you, please contact us and we will provide any information you require. This is advisable, particularly if you intend to travel some distance to view the property. The mention of any appliances and services within these details does not imply that they are in full and efficient working order. These particulars are in draft form awaiting Vendors confirmation of their accuracy. These details must therefore be taken as a guide only.