



Liverpool Road, Eccles

Manchester



Offers in Region of £210,000

Liverpool Road

Eccles, Manchester

Desirable two bed terraced house in Peel Green. Spacious open plan layout, modern kitchen/dining, cosy lounge with log burner, two double bedrooms, contemporary bathroom. Low maintenance garden with patio and artificial lawn. Newly installed windows. Close to amenities and transport links. Council Tax band: A

Tenure: Leasehold

- Deceptively Spacious Terrace Property
- Bay Fronted Lounge
- Open Plan Modern Fitted Kitchen & Dining Space
- Contemporary Bathroom Suite
- Two Generous Double Bedrooms
- Low Maintenance Garden to the Rear
- Newly Installed Windows
- Perfectly Located Close to Amenities & Excellent Transport Links



HILLS



Entrance Hallway

Featuring ceiling light point, wall - mounted radiator, power point. Complete with composite door. Fitted with tiled flooring.

Lounge

11' 2" x 10' 9" (3.40m x 3.27m)

Featuring ceiling light point, double glazed bay window, wall - mounted radiator, power point. Complete with log burner. Fitted with carpet flooring.

Dining room

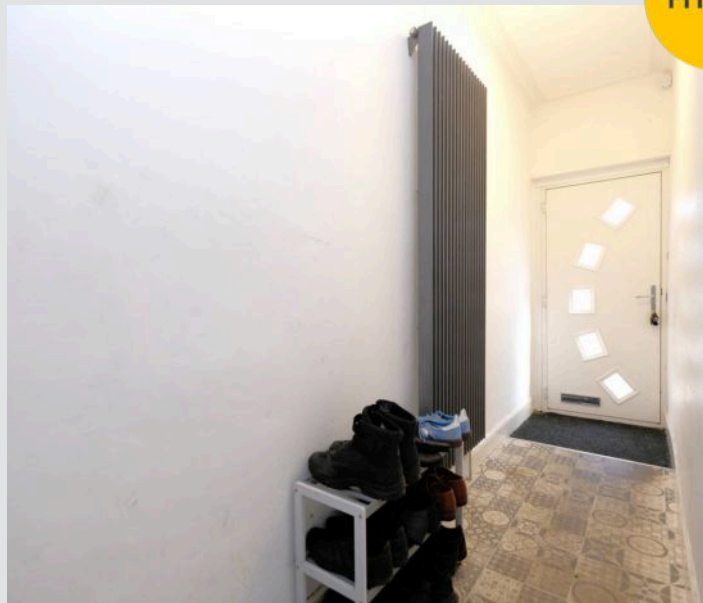
13' 9" x 11' 7" (4.19m x 3.53m)

Featuring ceiling light point, wall - mounted radiator, power point. Complete with French doors. Fitted with laminate flooring.

Kitchen

8' 3" x 7' 7" (2.51m x 2.31m)

Featuring ceiling wall point, double glazed window, wall and base units, storage under the stairs. Complete with composite sink, gas hob, stainless steel extractor. Space for washer, fridge freezer. Fitted with laminate flooring.



Landing

Featuring ceiling light point, loft access. Fitted with carpet flooring.

Bedroom One

14' 7" x 11' 3" (4.44m x 3.43m)

Featuring ceiling light point, double glazed window, wall - mounted radiator, power point. Fitted with carpet flooring.

Bedroom Two

12' 2" x 9' 6" (3.71m x 2.89m)

Featuring ceiling light point, double glazed window, wall - mounted radiator. Complete with boiler cupboard, original fireplace. Fitted with carpet flooring.

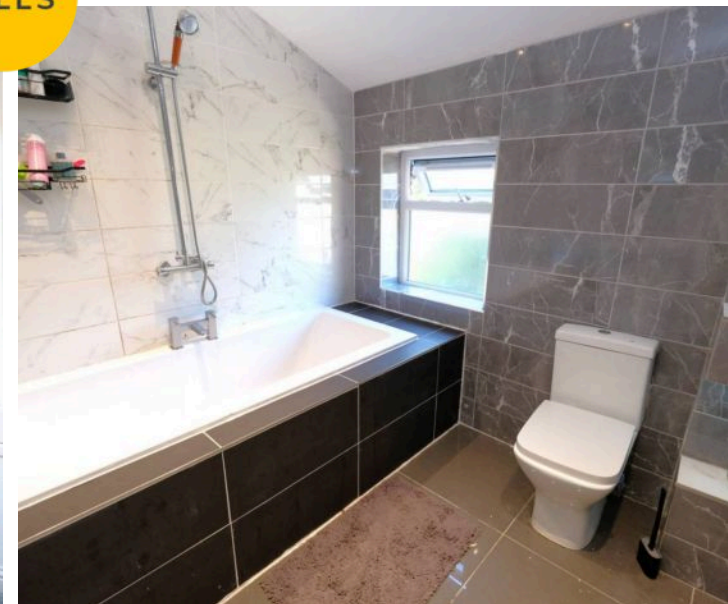
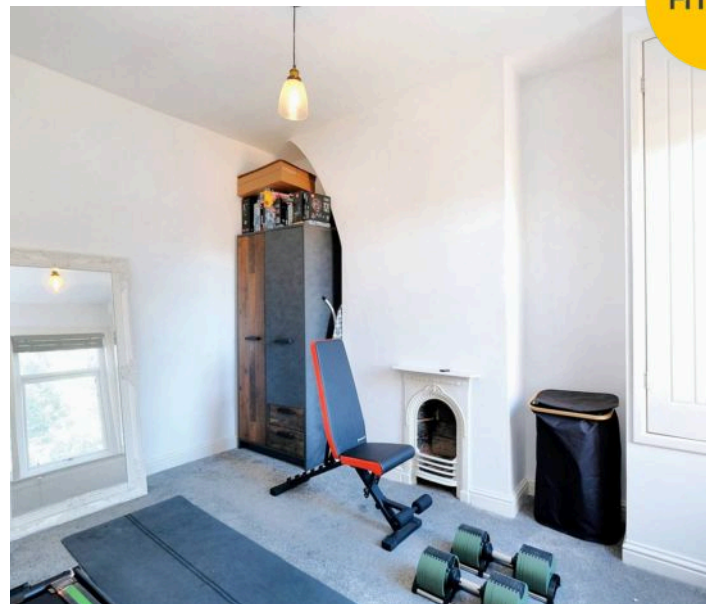
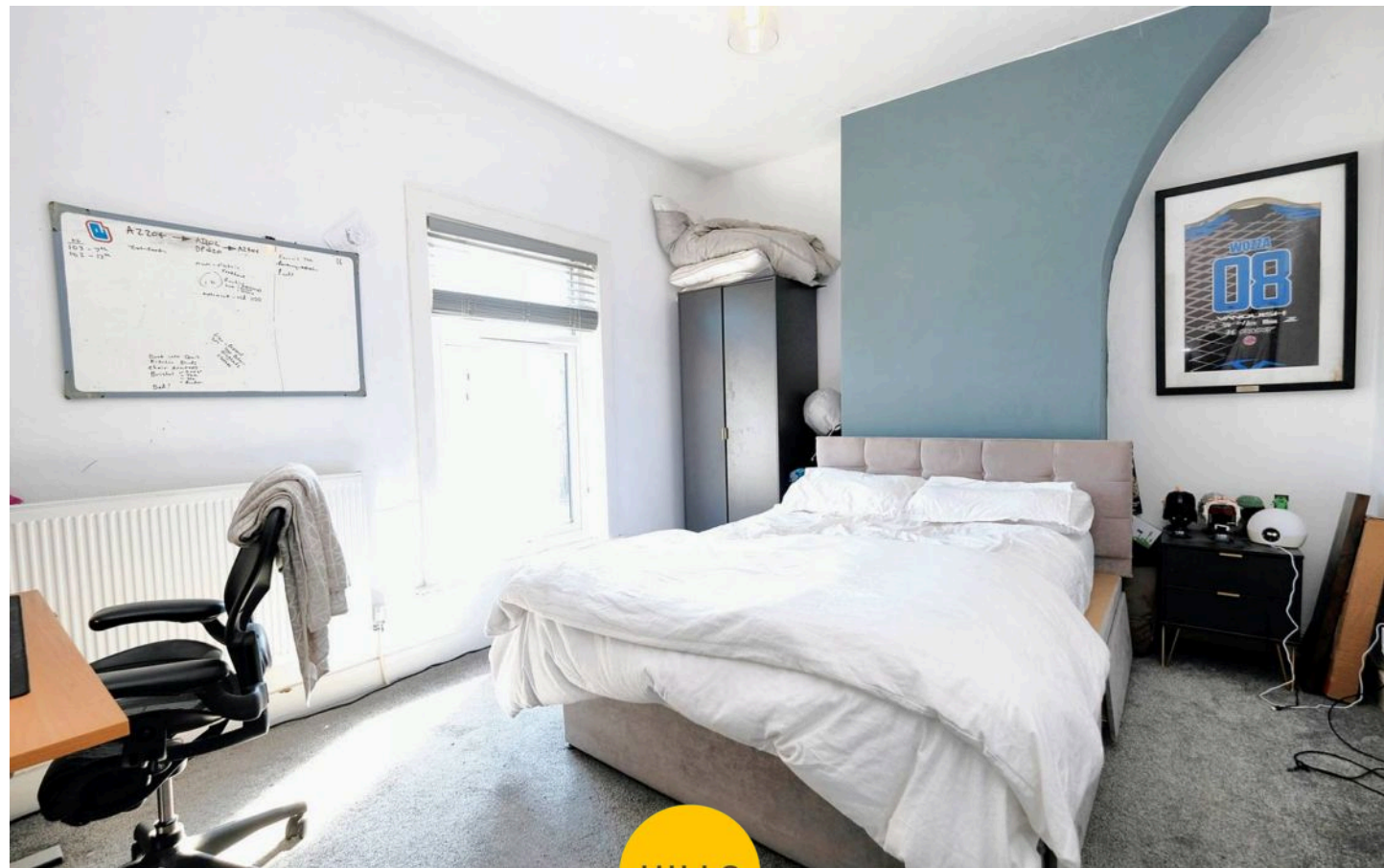
Bathroom

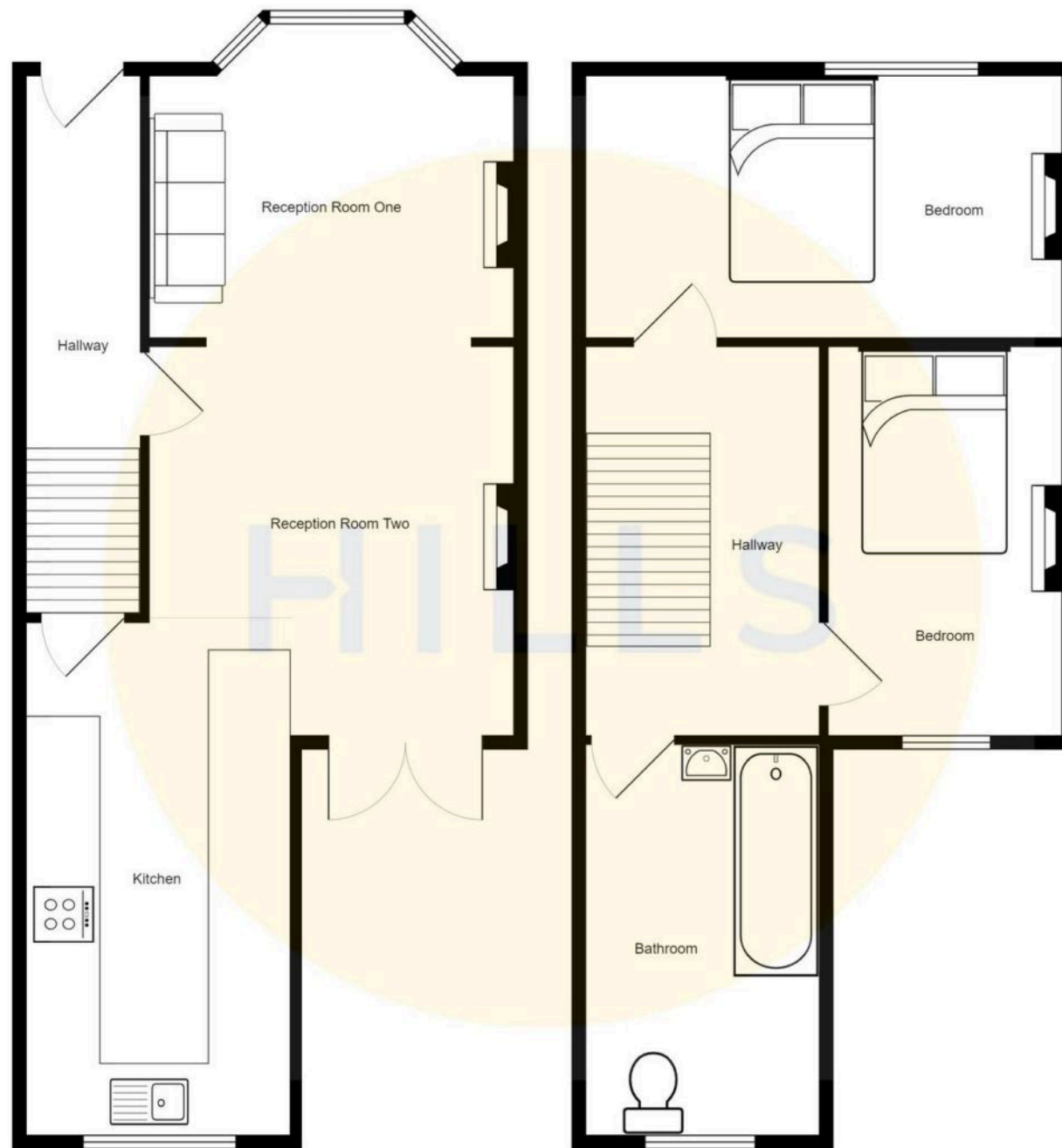
7' 8" x 7' 4" (2.34m x 2.23m)

Featuring three piece suite including w/c, hand wash basin, bath with a shower overhead, hand towel rail. Complete with ceiling light spotlights, double glazed window, vanity unit. Fitted with tiled walls and flooring.

External

To the front of the property is a walled garden, paving, decorative slate chippings. To the rear of the property is a decked patio, artificial lawn, rear gated access, wooden bar, external power, external tap.







Hills | Salfords Estate Agent

Hills Residential, Sentinel House Albert Street – M30 0SS

0161 707 4900

sales@hills.agency

www.hills.agency/



THE PROPERTY MISDESCRIPTIONS ACT 1991 The Agent has not tested any apparatus, equipment, fixtures and fittings or services and so cannot verify that they are in working order or fit for the purpose. A Buyer is advised to obtain verification from their Solicitor or Surveyor. References to the Tenure of a Property are based on information supplied by the Seller. The Agent has not had sight of the title documents. A Buyer is advised to obtain verification from their Solicitor. You are advised to check the availability of this property before travelling any distance to view. Every effort and precaution has been made to ensure these particulars are correct and not misleading but their accuracy is not guaranteed nor do they form part of any contract. If there is any point which is of particular importance to you, please contact us and we will provide any information you require. This is advisable, particularly if you intend to travel some distance to view the property. The mention of any appliances and services within these details does not imply that they are in full and efficient working order. These particulars are in draft form awaiting Vendors confirmation of their accuracy. These details must therefore be taken as a guide only.