

Hartington Road, Eccles
Manchester



Offers in Region of £230,000

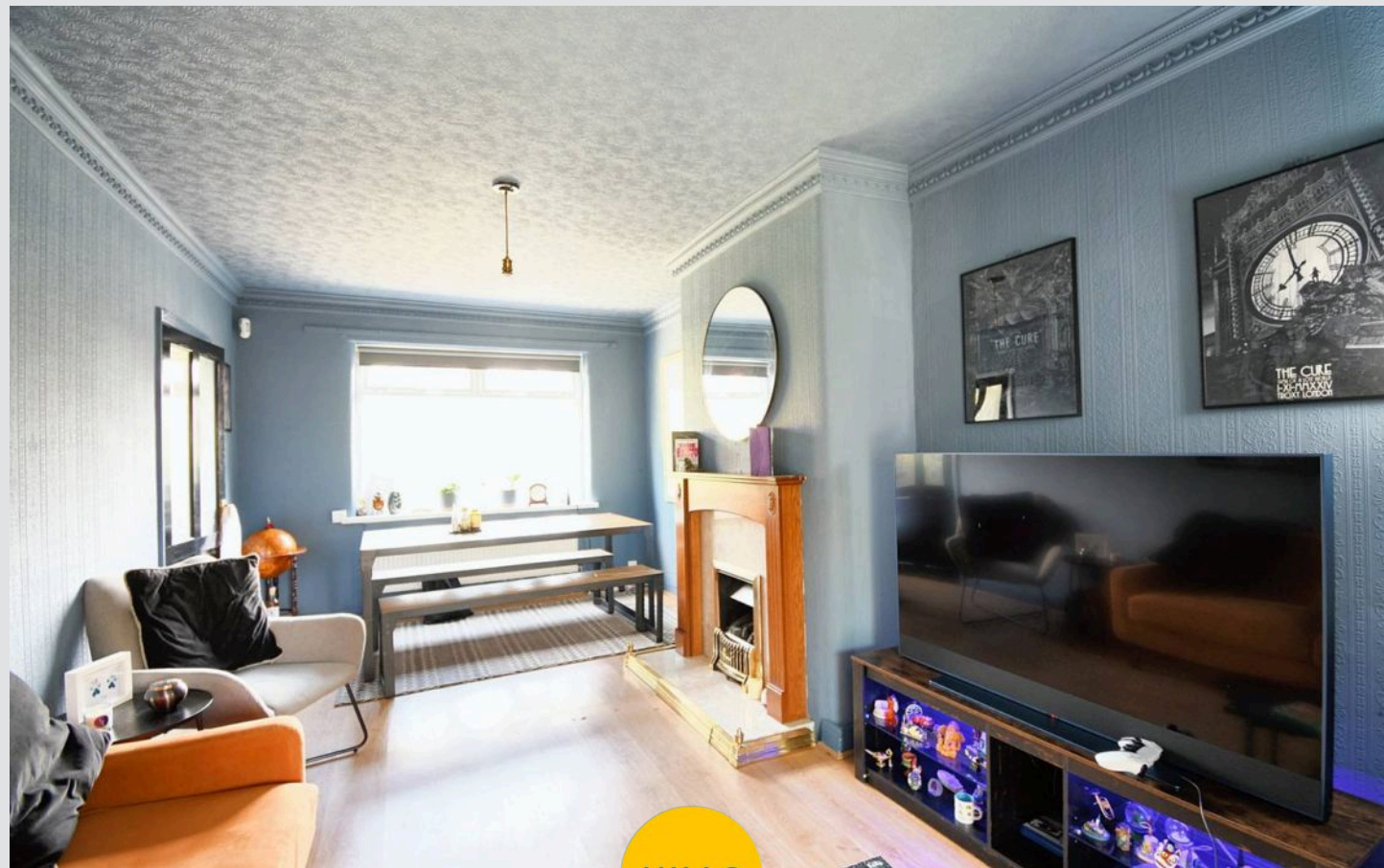
Hartington Road

Eccles, Manchester

Fabulous first time buy on quiet cul-de-sac between Monton & Worsley Villages. Three bed mid-terrace with open plan lounge, conservatory, extended kitchen. Newly fitted bathroom. Low maintenance gardens & potential for off-road parking. Close to amenities, schools, shops & great transport links. Council Tax band: A

Tenure: Leasehold

- Fabulous First Time Buy
- Open Plan Lounge & Dining Space with Conservatory to the Rear
- Extended Fitted Kitchen
- Three Bedrooms, Storage Room off the Box Room
- Stunning Three Piece Bathroom Suite & Downstairs W.C.
- Low Maintenance Gardens to the Front & Rear
- Located on a Quiet Cul De Sac Sandwiched Between Monton & Worsley Villages
- Surrounded by Excellent Local Amenities
- Well Served by Public Transport & Motorway Links



HILLS



Hallway**Lounge**

17' 0" x 10' 4" (5.18m x 3.15m)

Dining Room

6' 8" x 9' 0" (2.03m x 2.74m)

Kitchen

15' 6" x 7' 1" (4.72m x 2.16m)

Downstairs W.C.

4' 0" x 2' 5" (1.22m x 0.74m)

Landing**Bedroom One**

10' 8" x 9' 4" (3.25m x 2.84m)

Bedroom Two

10' 4" x 7' 3" (3.15m x 2.21m)

Bedroom Three

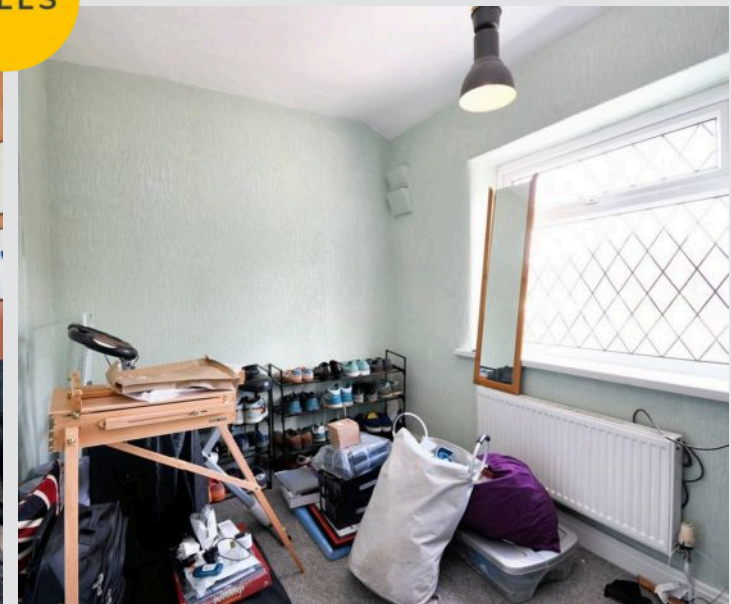
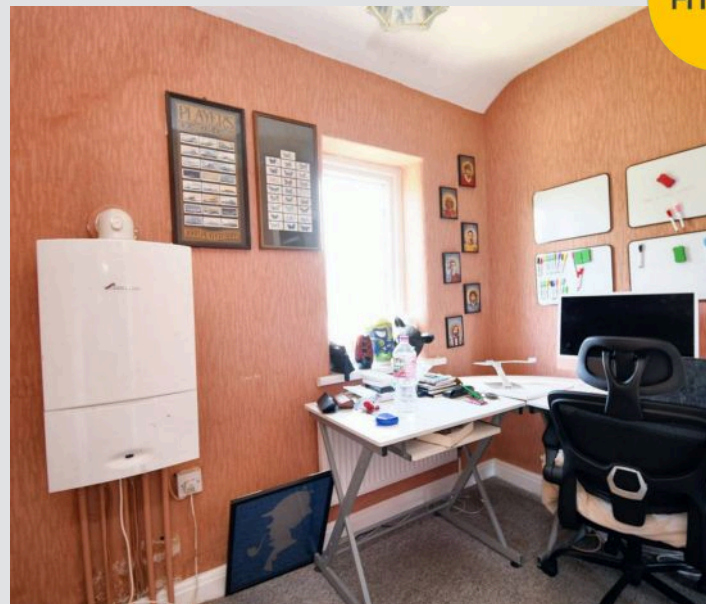
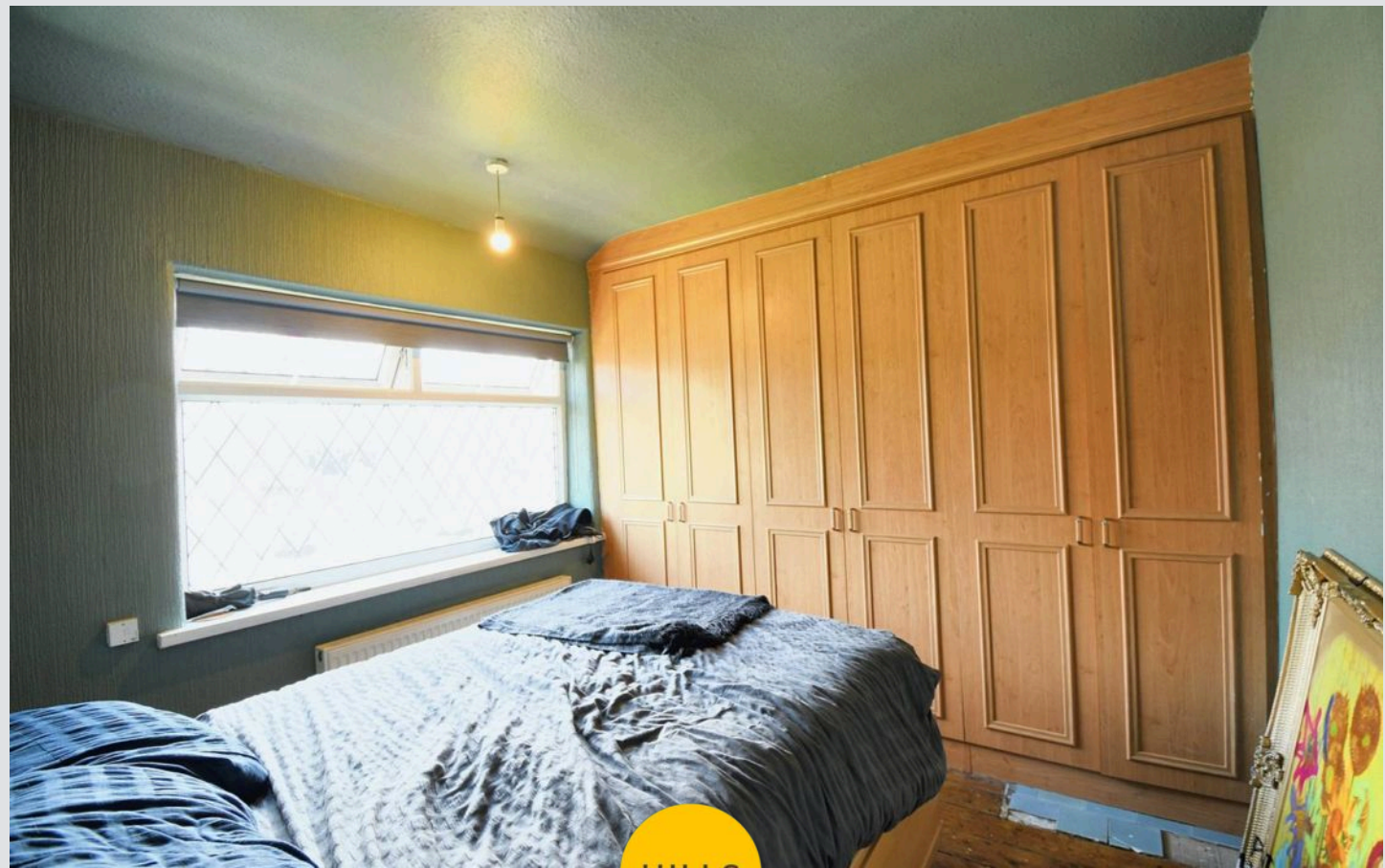
8' 5" x 5' 6" (2.57m x 1.68m)

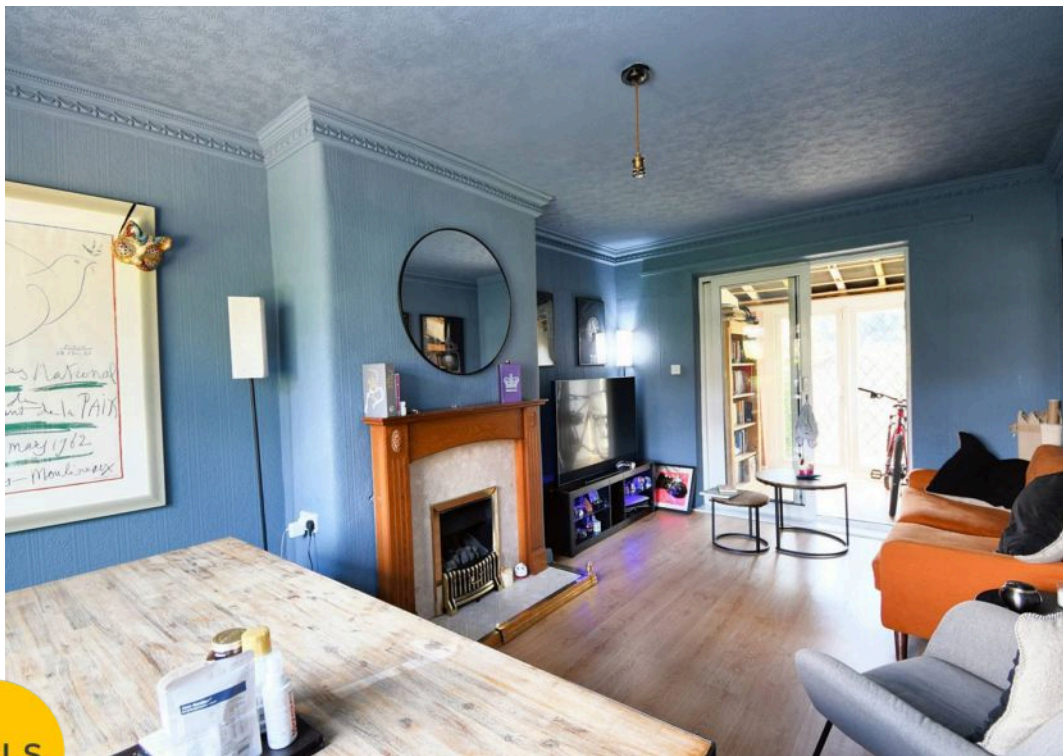
Bathroom

8' 6" x 4' 9" (2.59m x 1.45m)

Storage Cupboard

5' 8" x 2' 3" (1.73m x 0.69m)





HILLS







Hills | Salfords Estate Agent

Hills Residential, Sentinel House Albert Street – M30 0SS

0161 707 4900

sales@hills.agency

www.hills.agency/



THE PROPERTY MISDESCRIPTIONS ACT 1991 The Agent has not tested any apparatus, equipment, fixtures and fittings or services and so cannot verify that they are in working order or fit for the purpose. A Buyer is advised to obtain verification from their Solicitor or Surveyor. References to the Tenure of a Property are based on information supplied by the Seller. The Agent has not had sight of the title documents. A Buyer is advised to obtain verification from their Solicitor. You are advised to check the availability of this property before travelling any distance to view. Every effort and precaution has been made to ensure these particulars are correct and not misleading but their accuracy is not guaranteed nor do they form part of any contract. If there is any point which is of particular importance to you, please contact us and we will provide any information you require. This is advisable, particularly if you intend to travel some distance to view the property. The mention of any appliances and services within these details does not imply that they are in full and efficient working order. These particulars are in draft form awaiting Vendors confirmation of their accuracy. These details must therefore be taken as a guide only.