



10 Gilda Crescent Road, Eccles
Manchester



Offers in Region of £550,000

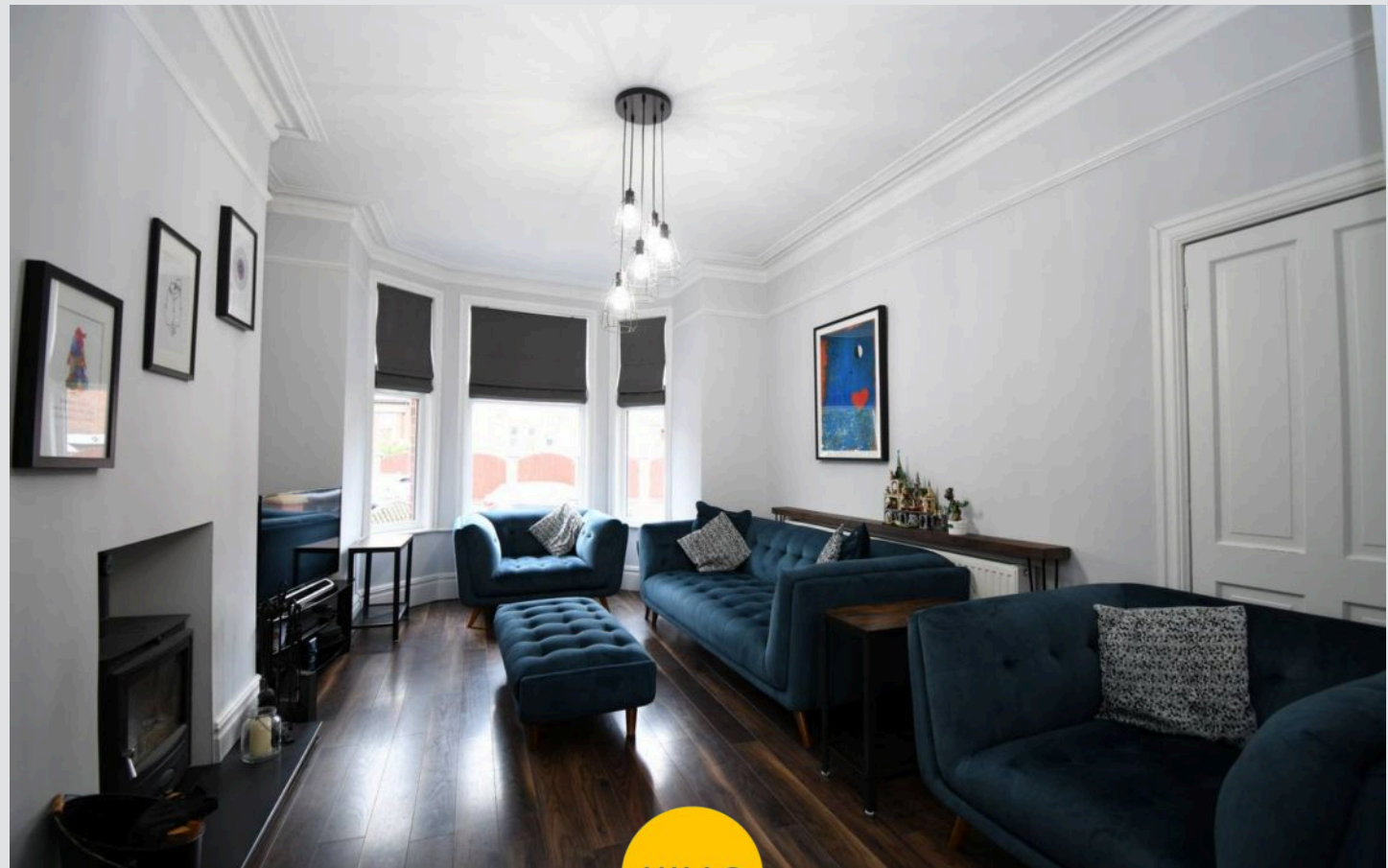
10 Gilda Crescent Road

Eccles, Manchester

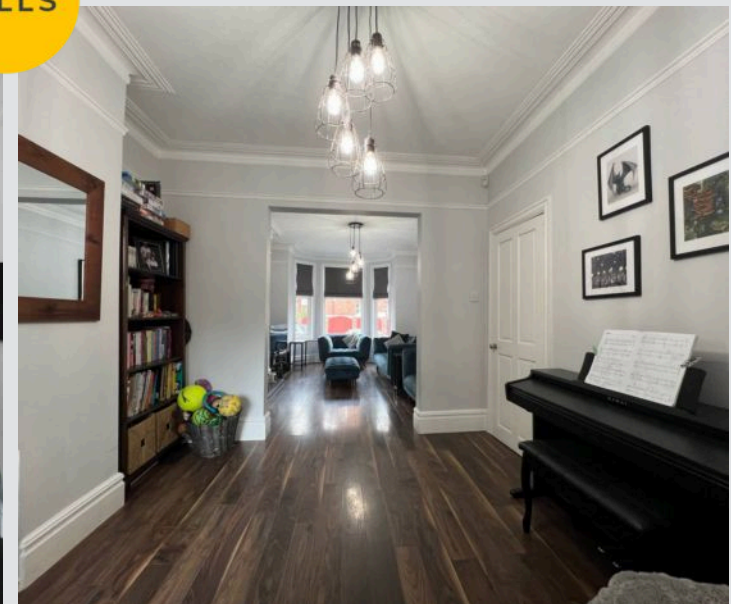
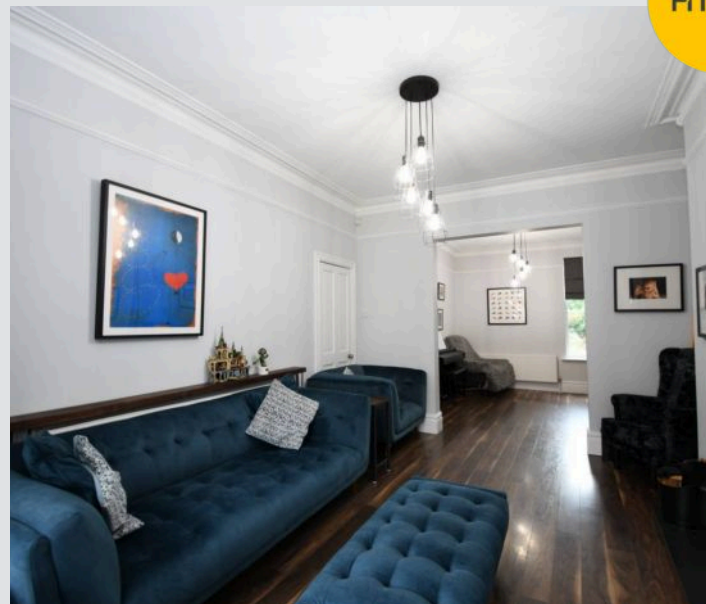
Council Tax band: D

Tenure: Freehold

- Located within the Tree Lined Streets of Ellesmere Park



HILLS



Reception One

16' 8" x 11' 8" (5.08m x 3.56m)

Laminated flooring, double glazed bay window, ceiling light point, power points, wall mounted radiator and stunning log burner.

Reception Two

12' 0" x 10' 8" (3.66m x 3.25m)

Laminated Flooring, double glazed window, ceiling light point radiator and power points.

Kitchen / Diner

16' 2" x 10' 7" (4.93m x 3.23m)

Laminated flooring, two double glazed windows, Upvc external door, a range of wall and base units with quartz worksurfaces, sunken sink, integrated fridge freezer and dishwasher, boiler, ceiling light point, wall mounted radiator and central 6 gas ring range cooker.

Cellar

17' 3" x 11' 8" (5.26m x 3.56m)

Currently used as storage, with plumbing in place for washing machine and tumble dryer. ceiling light point and multiple power points.

Landing One**Bedroom One**

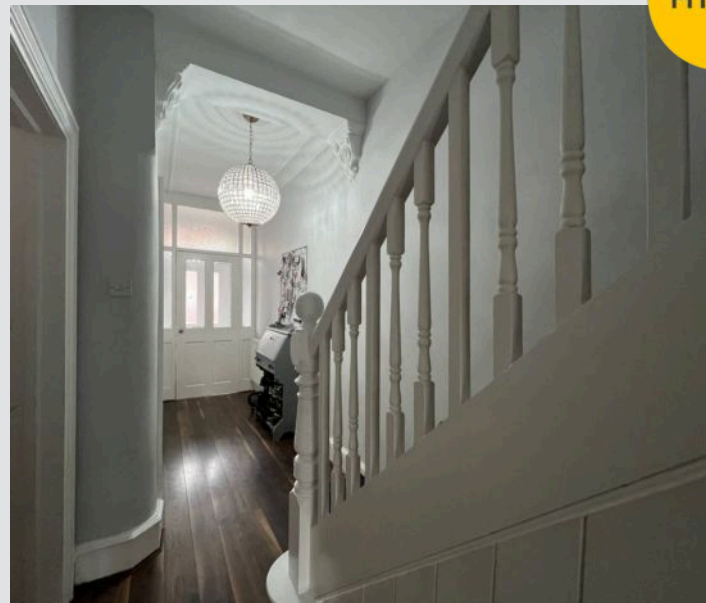
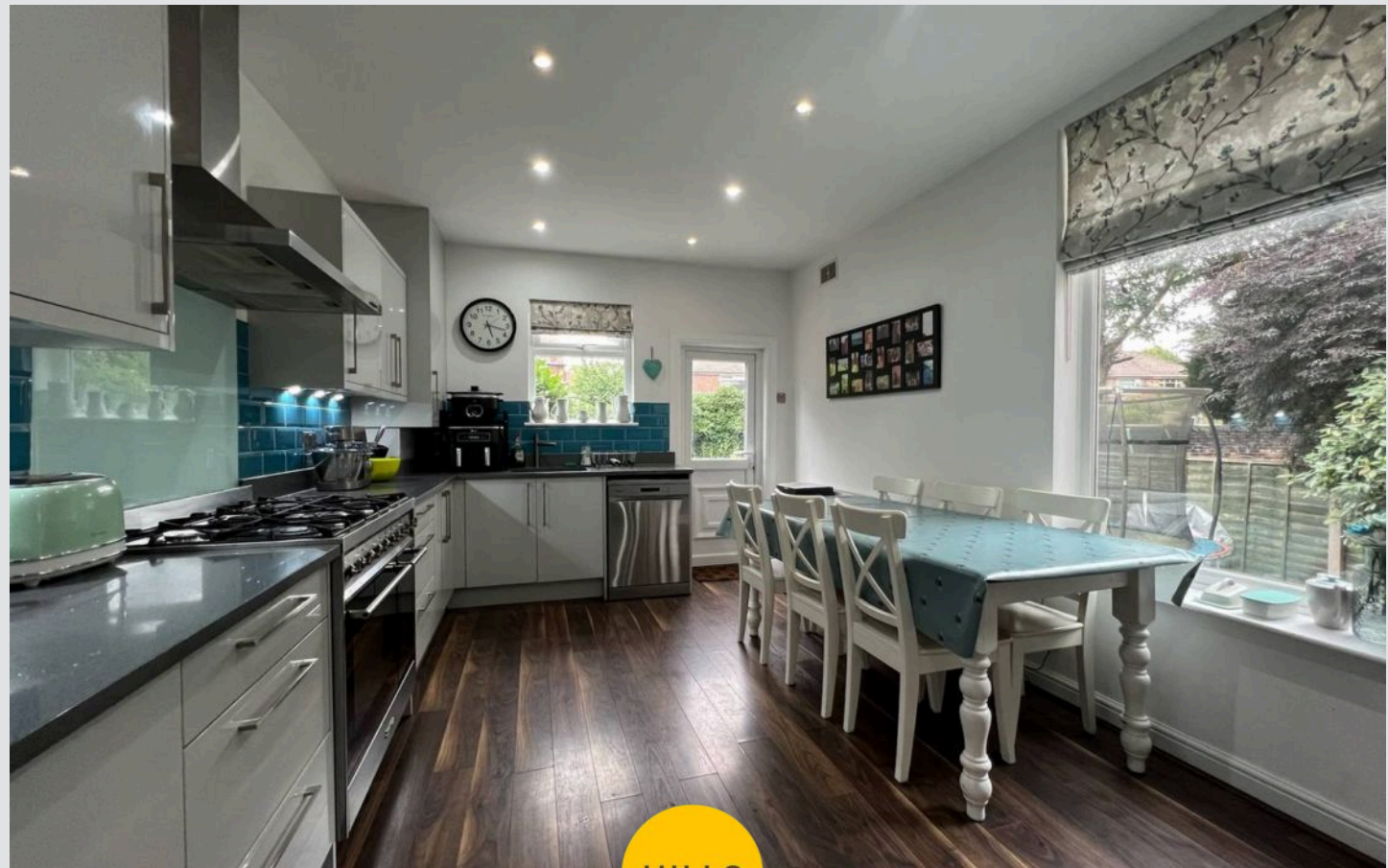
17' 0" x 16' 0" (5.18m x 4.88m)

Carpeted flooring, double glazed bay windows with wooden window seats, additional double glazed window, power points, wall mounted radiator and ceiling light point.

Bedroom Two

12' 0" x 10' 8" (3.66m x 3.25m)

Carpeted flooring, double glazed window, wall mounted radiator, ceiling light point and power points.



Shower Room

7' 6" x 5' 5" (2.29m x 1.65m)

Luxury vinyl tiled flooring, tiled walls, shower cubicle, hand wash basin, w.c. heated towel rail and ceiling light points.

Bedroom Three

11' 0" x 10' 4" (3.35m x 3.15m)

Carpeted flooring, double glazed windows, wall mounted radiator, ceiling light point and power points.

Landing Two**Bedroom Four**

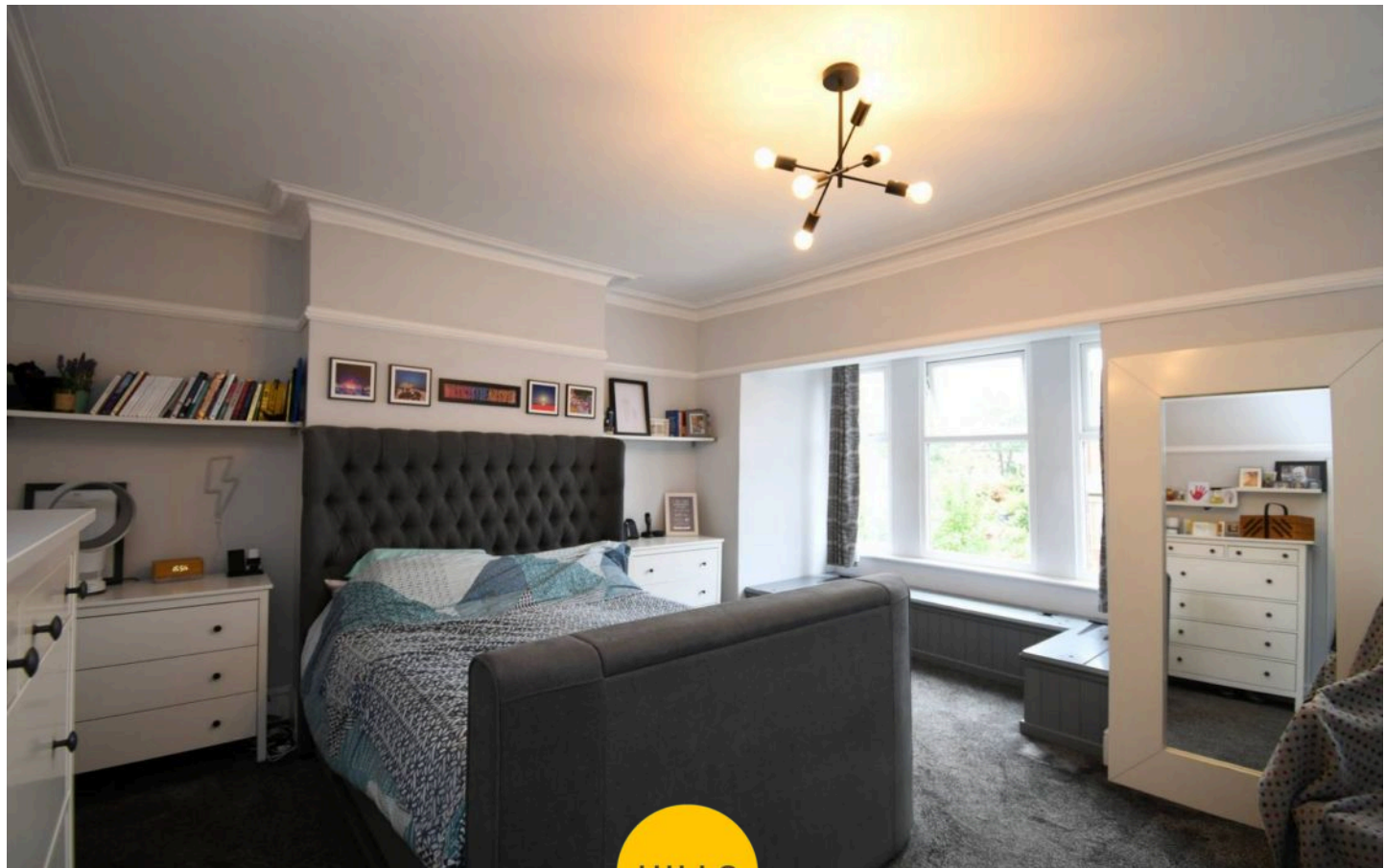
15' 1" x 13' 0" (4.60m x 3.96m)

Carpeted flooring, double glazed window, wall mounted radiator, two ceiling light points and power points. Loft access.

Bathroom

12' 1" x 10' 8" (3.68m x 3.25m)

A four piece suite including freestanding bath, shower cubicle, vanity unit with handwash basin and W.C. Luxury vinyl tile flooring, tiled walls, double glazed window, ceiling spotlights and ceiling light point.





HILLS





HILLS



