



Edmund Street

Salford



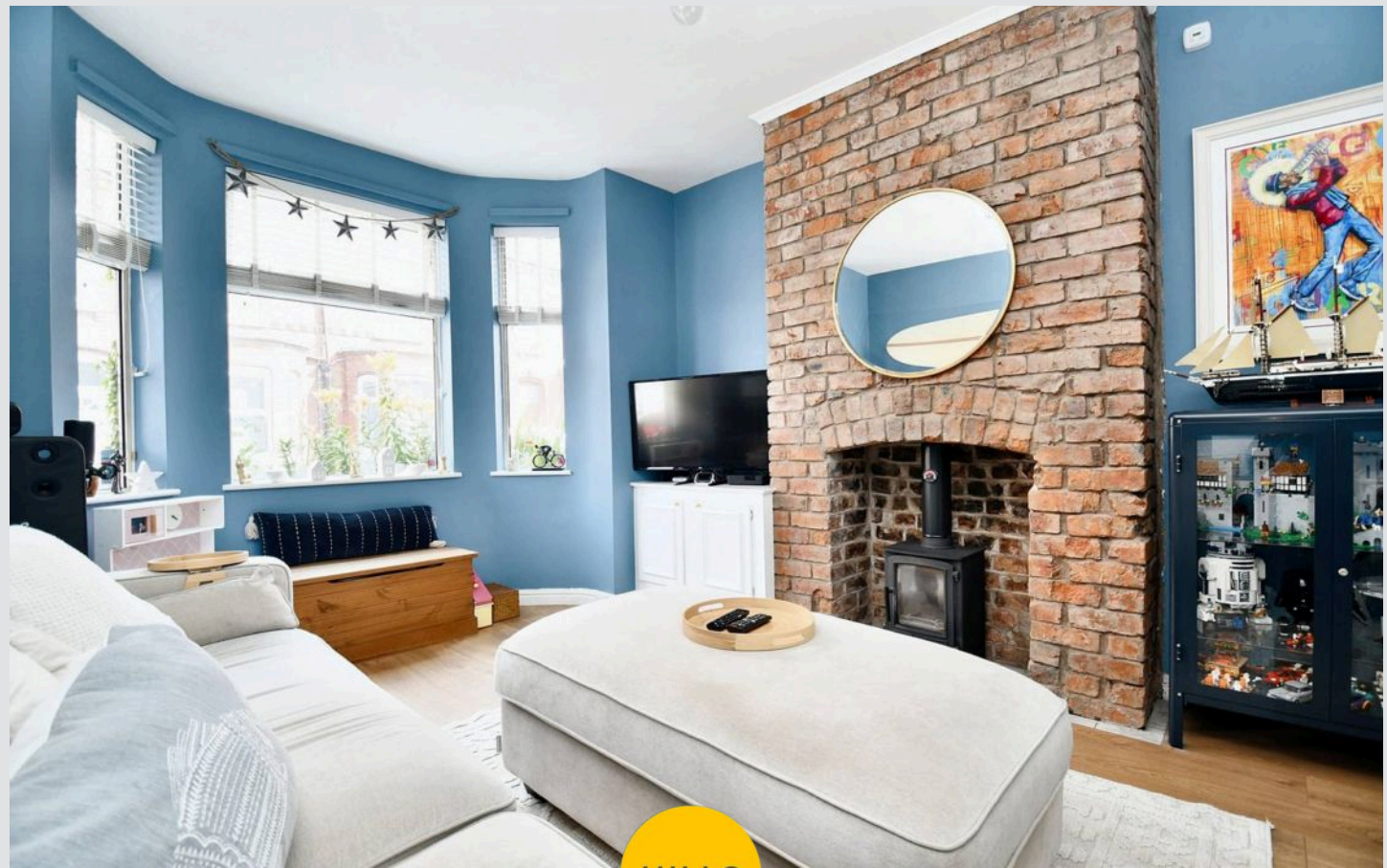
Offers Over £200,000

Edmund Street

Salford

****Beautifully Presented, Two Bedroom Bay-Fronted Terraced Property - Just a Stone's Throw from Buile Hill Park! Featuring Two Double Bedrooms and a Large, Contemporary Four-Piece Bathroom!****
Council Tax band: A

- Stylish Bay-Fronted Two Bedroom Terraced Property
- Just a Stone's Throw from Buile Hill Park
- Bay-Fronted Lounge and a Spacious Dining Room with Window Seating
- Modern Fitted Kitchen
- Large, Contemporary Four-Piece Bathroom
- Two Double Bedrooms
- Within Easy Access of Amenities and Local Schooling
- Close to Excellent Transport Links into Salford Quays, Media City and Manchester City Centre
- Ideal First Time Home or Investment
- Early Viewing is Essential!



HILLS



Hallway

Lounge

11' 10" x 11' 7" (3.61m x 3.53m)

Dining Room

13' 9" x 12' 4" (4.18m x 3.76m)

Kitchen

9' 11" x 8' 5" (3.02m x 2.57m)

Landing

Ceiling light point and loft access.

Bedroom One

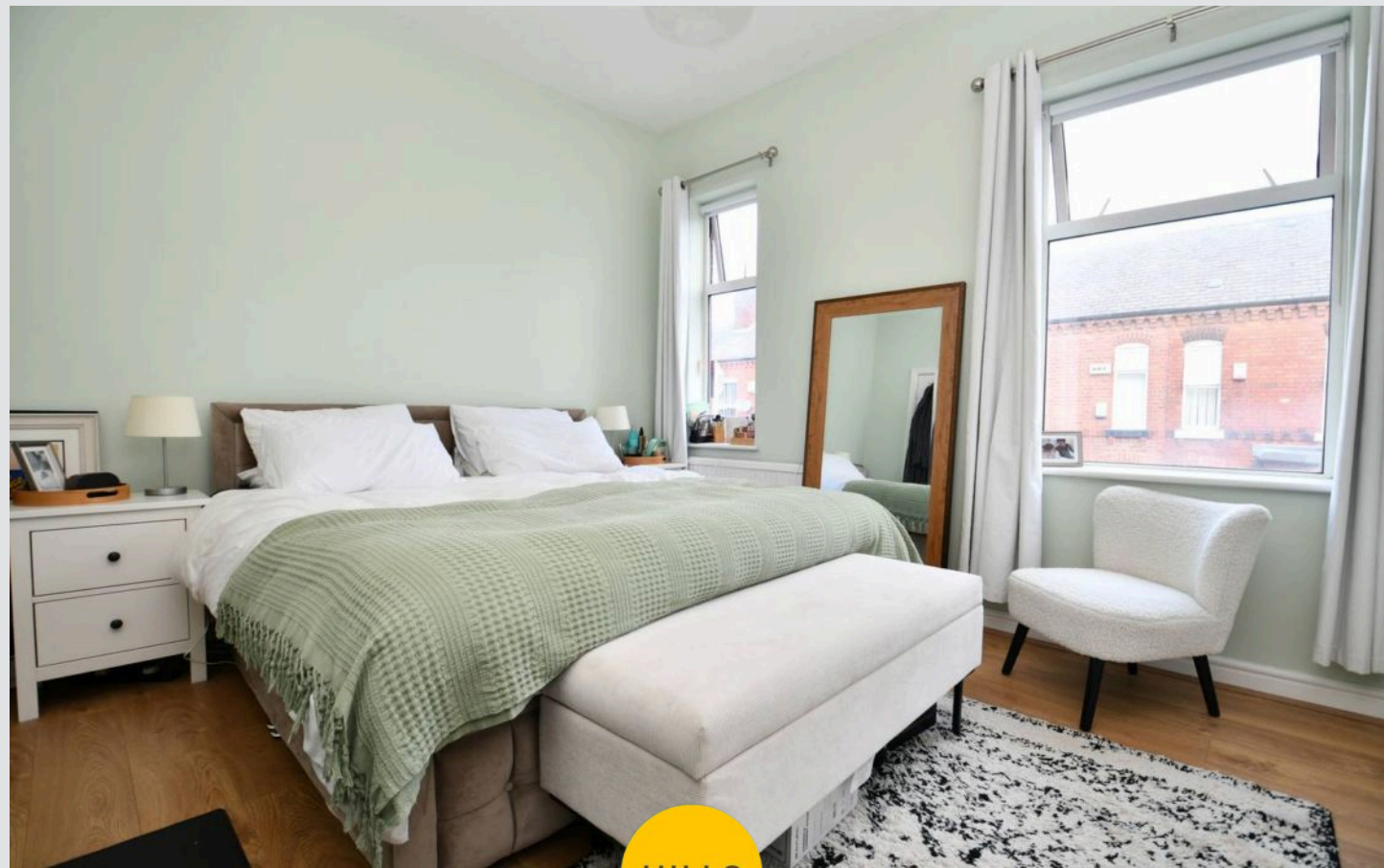
12' 1" x 11' 11" (3.68m x 3.64m)

Bedroom Two

13' 10" x 8' 11" (4.21m x 2.71m)

Bathroom

9' 10" x 8' 7" (2.99m x 2.61m)

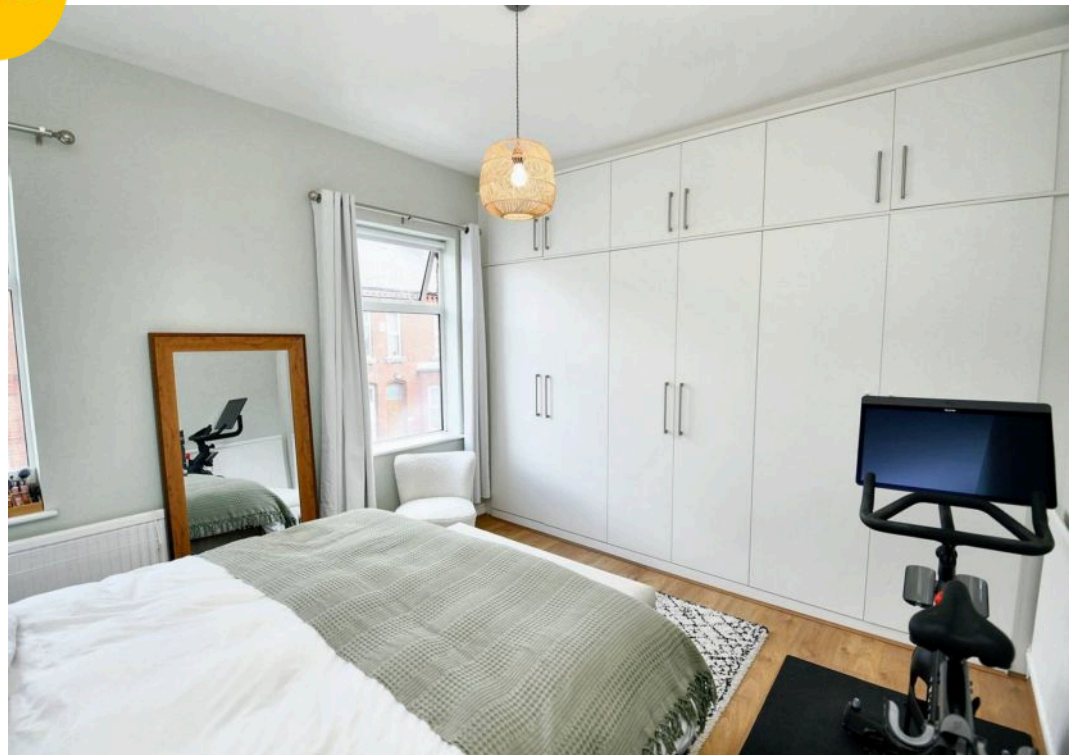


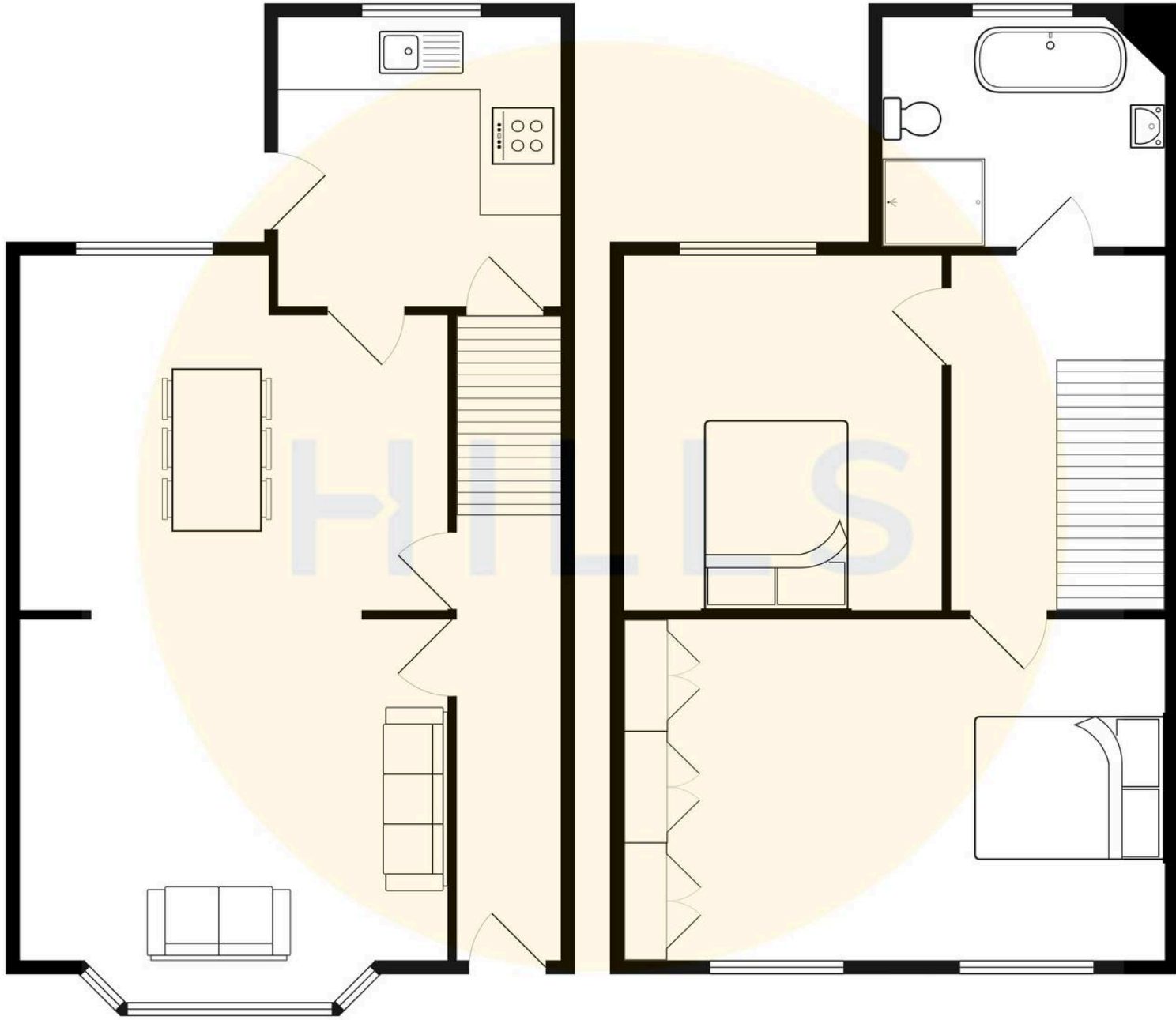
HILLS





HILLS







Hills | Salfords Estate Agent

Hills Residential, Sentinel House Albert Street – M30 0SS

0161 707 4900

sales@hills.agency

www.hills.agency/



THE PROPERTY MISDESCRIPTIONS ACT 1991 The Agent has not tested any apparatus, equipment, fixtures and fittings or services and so cannot verify that they are in working order or fit for the purpose. A Buyer is advised to obtain verification from their Solicitor or Surveyor. References to the Tenure of a

Property are based on information supplied by the Seller. The Agent has not had sight of the title documents. A Buyer is advised to obtain verification from their Solicitor. You are advised to check the availability of this property before travelling any distance to view. Every effort and precaution has been made to ensure these particulars are correct and not misleading but their accuracy is not guaranteed nor do they form part of any contract. If there is any point which is of particular importance to you, please contact us and we will provide any information you require. This is advisable, particularly if you intend to travel some distance to view the property. The mention of any appliances and services within these details does not imply that they are in full and efficient working order. These particulars are in draft form awaiting Vendors confirmation of their accuracy. These details must therefore be taken as a guide only.