

Cholmondeley Road

Salford



In Excess of £230,000

# Cholmondeley Road

Salford

**\*\*NO VENDOR CHAIN\*\*** This SPACIOUS, THREE BEDROOM SEMI-DETACHED FAMILY HOME features beautifully maintained gardens to the front and rear, along with a driveway and a garage for off-road parking!

Council Tax band: C

Tenure: Leasehold

- Spacious Three Bedroom Semi-Detached Family Home
- Bay-Fronted Lounge and a Spacious Dining Room
- Fitted Kitchen and a Modern, Three-Piece Family Bathroom
- Three Well-Proportioned Bedrooms
- Beautifully Presented Gardens to the Front and Rear
- Driveway and a Garage Providing Off-Road Parking
- Within Walking Distance of Salford Royal Hospital, Buile Hill Park and Light Oaks Primary School
- Ideal for Someone Looking to Put Their Own Stamp on a Property
- Viewing is Highly Recommended!



### Entrance Hallway

Complete with a ceiling light point and carpet flooring.

### Lounge

10' 9" x 10' 8" (3.27m x 3.25m)

Complete with a ceiling light point, double glazed bay window and wall mounted radiator. Fitted with carpet flooring.

### Kitchen

10' 2" x 6' 2" (3.10m x 1.88m)

Featuring complementary fitted units with integral hob and oven. Complete with two ceiling light points, two double glazed windows and tiled flooring.

### Dining Room

12' 2" x 10' 9" (3.71m x 3.28m)

Complete with a ceiling light point, wall mounted radiator and patio doors. Fitted with carpet flooring.

### Landing

Complete with a ceiling light point and double glazed window.

### Bedroom One

12' 0" x 10' 8" (3.67m x 3.26m)

Complete with a ceiling light point, double glazed window and wall mounted radiator. Fitted with carpet flooring.

### Bedroom Two

10' 9" x 11' 11" (3.28m x 3.62m)

Featuring fitted furniture. Complete with a ceiling light point, double glazed bay window and wall mounted radiator. Fitted with carpet flooring.

### Bedroom Three

7' 5" x 6' 3" (2.26m x 1.90m)

Complete with a ceiling light point, double glazed window and wall mounted radiator. Fitted with carpet flooring.



**Bathroom**

7' 3" x 6' 1" (2.20m x 1.86m)

Featuring a three-piece suite including a bath with shower over, hand wash basin and W.C. Complete with a ceiling light point, double glazed window, part tiled walls and cushioned flooring.

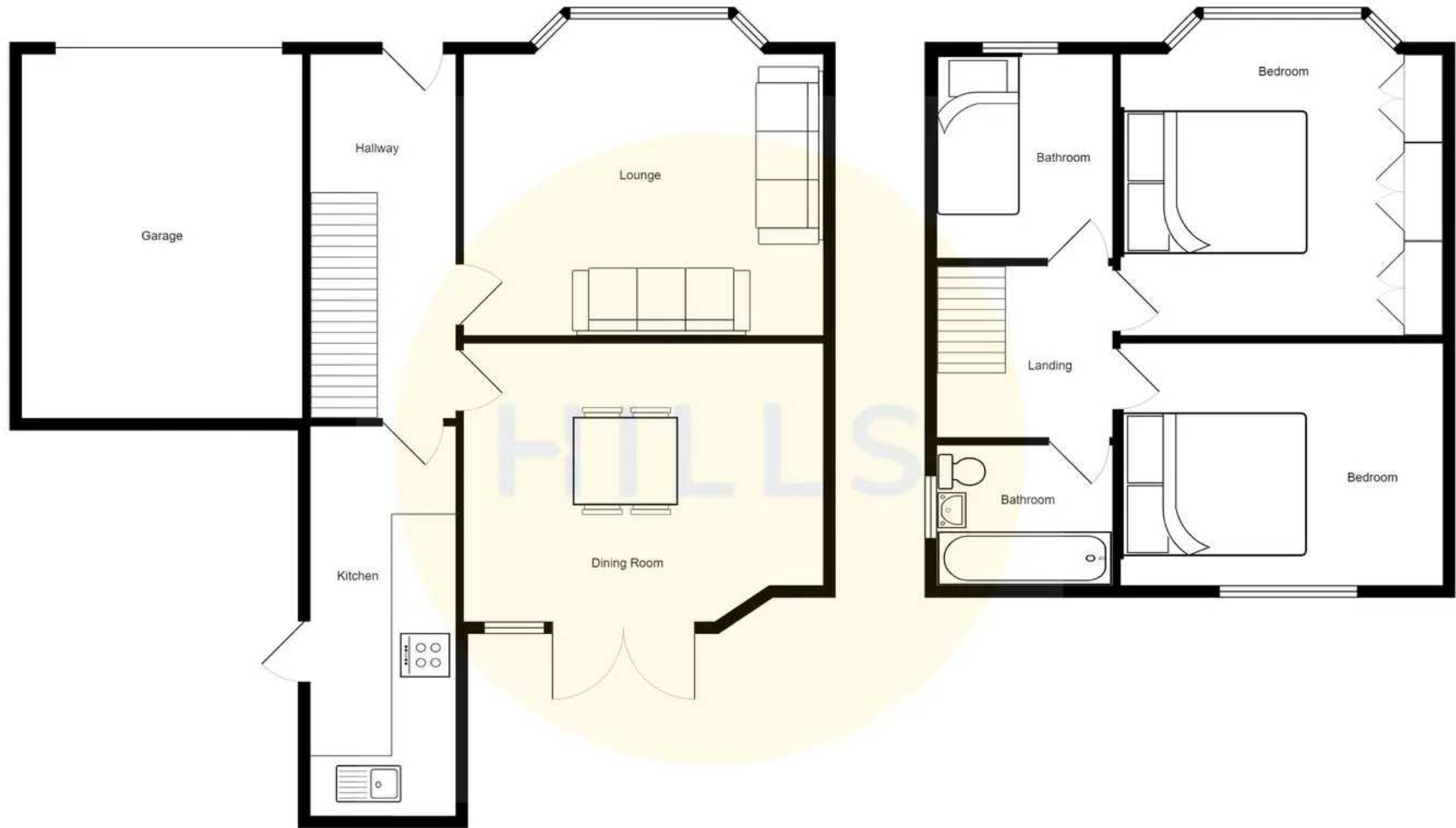
**External**

To the front of the property is a driveway and garage to the side providing off-road parking with a beautifully maintained gardens to the front and rear, with a herb patch to the rear garden.



HILLS







## Hills | Salfords Estate Agent

Hills Residential, Sentinel House Albert Street – M30 0SS

0161 707 4900

[sales@hills.agency](mailto:sales@hills.agency)

[www.hills.agency/](http://www.hills.agency/)



THE PROPERTY MISDESCRIPTIONS ACT 1991 The Agent has not tested any apparatus, equipment, fixtures and fittings or services and so cannot verify that they are in working order or fit for the purpose. A Buyer is advised to obtain verification from their Solicitor or Surveyor. References to the Tenure of a Property are based on information supplied by the Seller. The Agent has not had sight of the title documents. A Buyer is advised to obtain verification from their Solicitor. You are advised to check the availability of this property before travelling any distance to view. Every effort and precaution has been made to ensure these particulars are correct and not misleading but their accuracy is not guaranteed nor do they form part of any contract. If there is any point which is of particular importance to you, please contact us and we will provide any information you require. This is advisable, particularly if you intend to travel some distance to view the property. The mention of any appliances and services within these details does not imply that they are in full and efficient working order. These particulars are in draft form awaiting Vendors confirmation of their accuracy. These details must therefore be taken as a guide only.