



Carlton Street, Eccles

Manchester



Offers Over £250,000

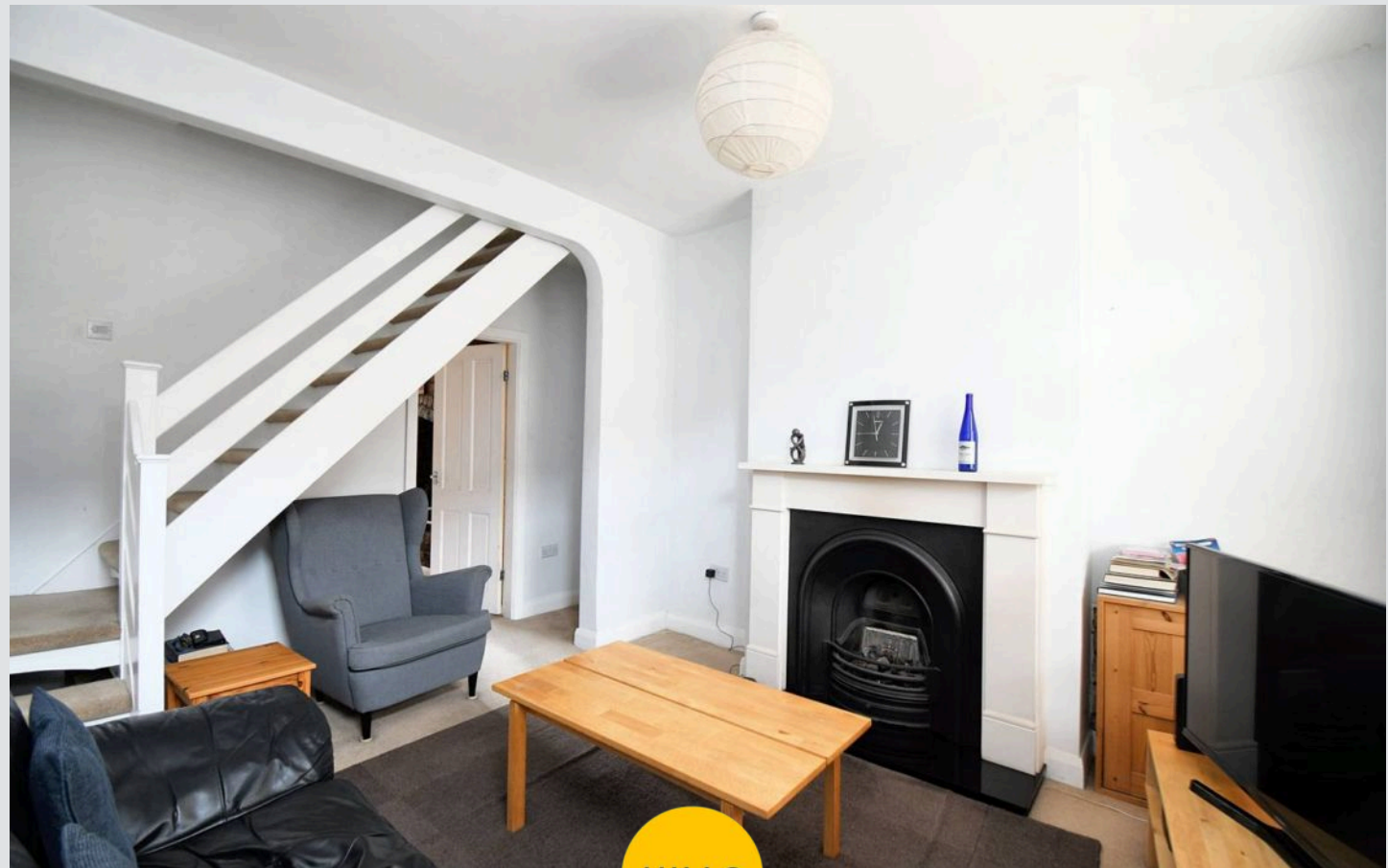
Carlton Street

Eccles, Manchester

Charming terrace in Monton Village with spacious lounge, open-plan dining/kitchen, exposed brick fireplace. Two double bedrooms, gated front/rear gardens. Close to amenities, public transport, motorway links. Endless customisation possibilities. Council Tax band: A

Tenure: Freehold

- Perfect First Time Buy Located in the Heart of Monton Village
- Spacious Lounge
- Open Plan Fitted Kitchen and Formal Dining Space with Exposed Brick Fireplace
- Two Double Bedrooms
- Three Piece Bathroom Suite
- Gated, Low Maintenance Front & Rear Gardens
- Surrounded by a Plethora of Amenities Including Shops, Bars, Restaurants & Beautiful Scenic Walks
- Well Served by Public Transport and Motorway Links
- Opportunity to Create Your Perfect Home



HILLS



Lounge

13' 8" x 11' 5" (4.17m x 3.48m)

Dining Room

13' 2" x 11' 6" (4.01m x 3.51m)

Kitchen

9' 6" x 6' 1" (2.90m x 1.85m)

Bedroom One

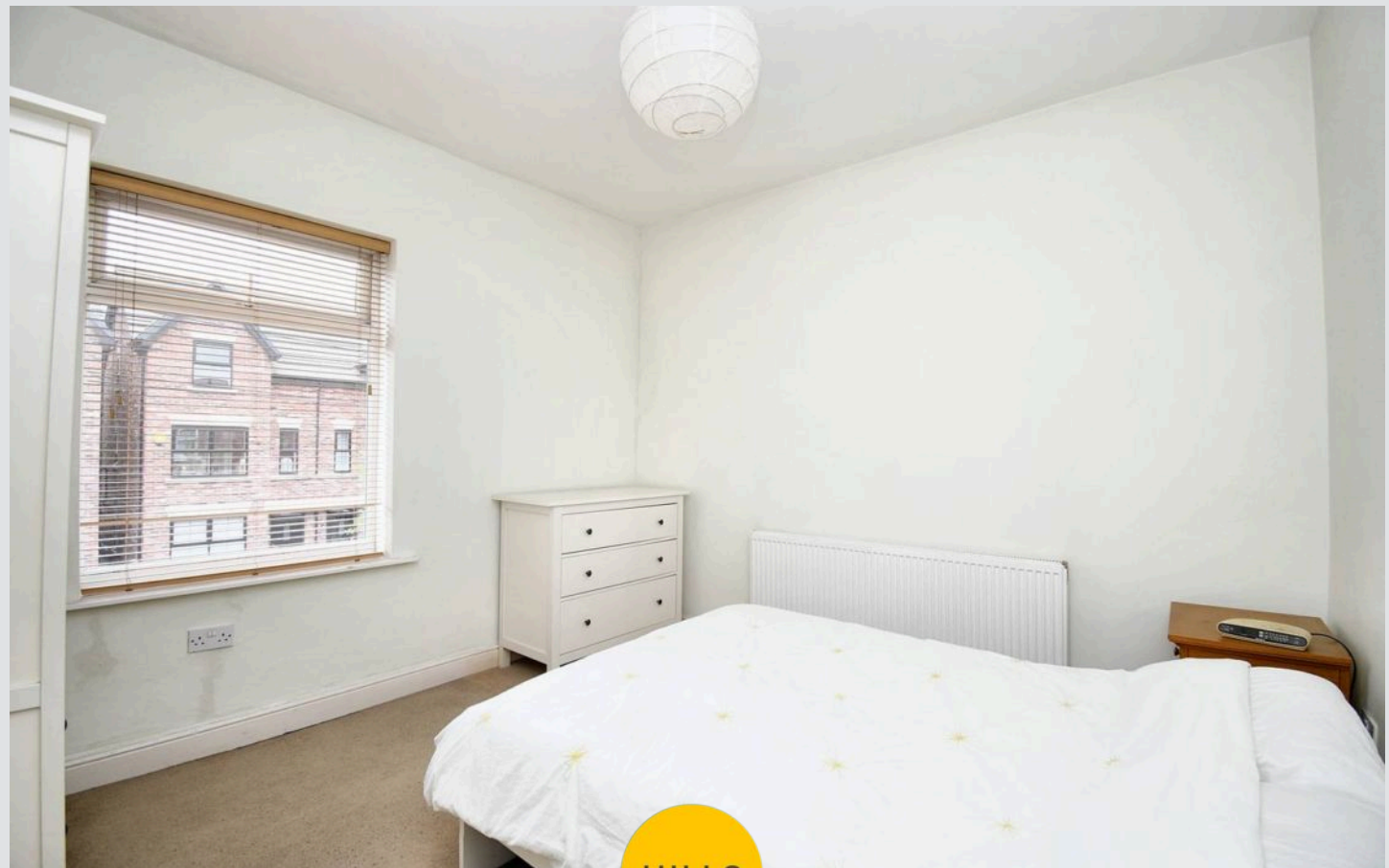
11' 6" x 11' 3" (3.51m x 3.43m)

Bedroom Two

13' 4" x 6' 9" (4.06m x 2.06m)

Bathroom

9' 5" x 4' 2" (2.87m x 1.27m)



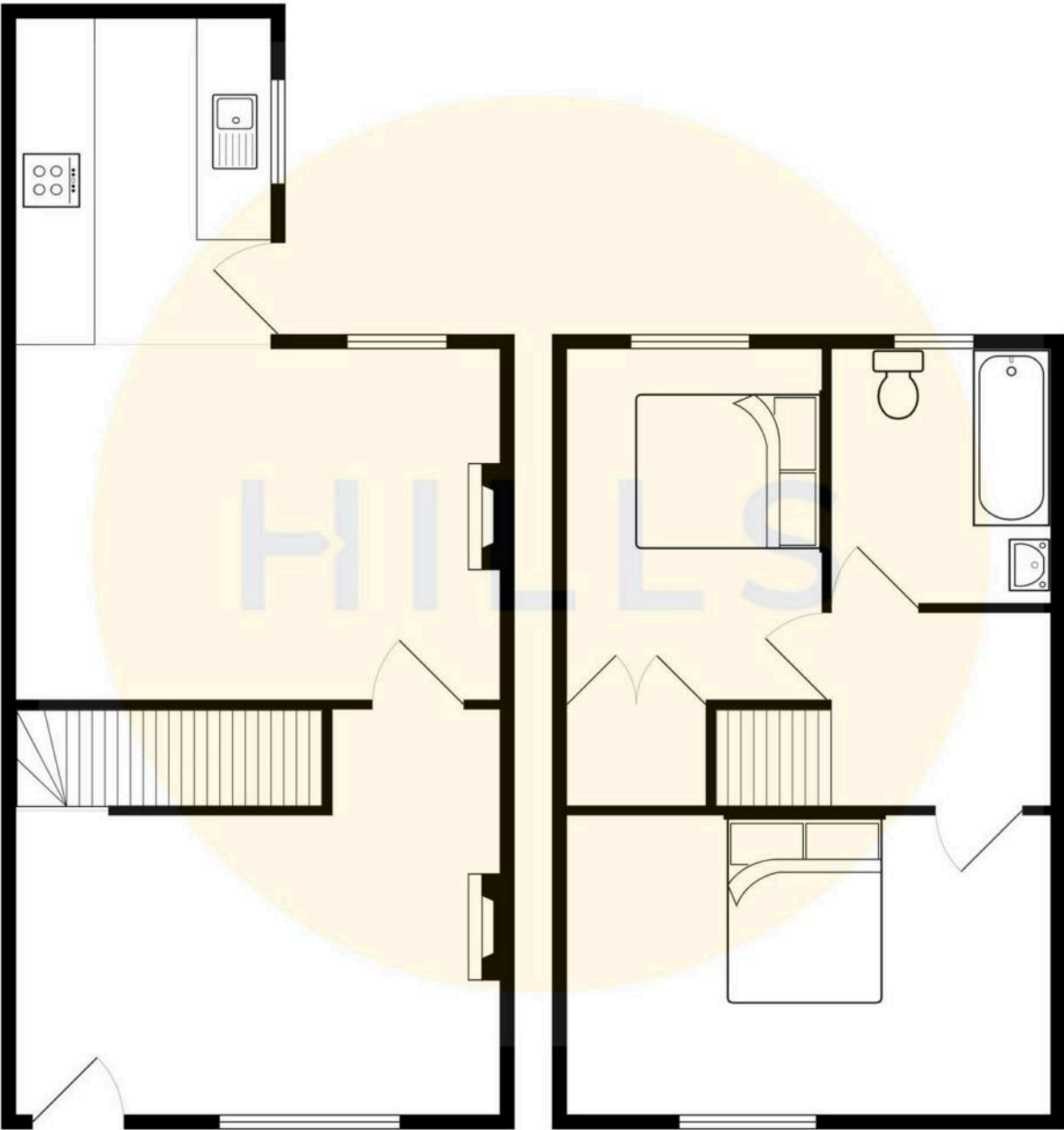
HILLS





HILLS







Hills | Salfords Estate Agent

Hills Residential, Sentinel House Albert Street – M30 0SS

0161 707 4900

sales@hills.agency

www.hills.agency/



THE PROPERTY MISDESCRIPTIONS ACT 1991 The Agent has not tested any apparatus, equipment, fixtures and fittings or services and so cannot verify that they are in working order or fit for the purpose. A Buyer is advised to obtain verification from their Solicitor or Surveyor. References to the Tenure of a

Property are based on information supplied by the Seller. The Agent has not had sight of the title documents. A Buyer is advised to obtain verification from their Solicitor. You are advised to check the availability of this property before travelling any distance to view. Every effort and precaution has been made to ensure these particulars are correct and not misleading but their accuracy is not guaranteed nor do they form part of any contract. If there is any point which is of particular importance to you, please contact us and we will provide any information you require. This is advisable, particularly if you intend to travel some distance to view the property. The mention of any appliances and services within these details does not imply that they are in full and efficient working order. These particulars are in draft form awaiting Vendors confirmation of their accuracy. These details must therefore be taken as a guide only.