



Anson Street, Eccles  
Manchester



In Excess of £220,000



# Anson Street

Eccles, Manchester

Three bedroom end terrace near Monton Village. Chain-free with spacious lounge, conservatory, open plan kitchen/dining, guest w.c. Three bedrooms with fitted wardrobes. Off-road parking, low maintenance garden. Convenient location for families and commuters, close to amenities and transport links.

Council Tax band: A

Tenure: Freehold

- Located just a Short walk to the Desirable Monton Village
- Offered to the Market Chain Free
- Spacious Lounge and Conservatory
- Open Plan Fitted Kitchen & Dining Space
- Three Generously Sized Bedrooms, Complete with Fitted Wardrobes
- Three Piece Fitted Bathroom Suite & Down Stairs W.C.
- Off Road parking for Multiple Cars
- Low Maintenance Garden to the Rear
- Surrounded by a Plethora of Amenities & Excellent Transport Links



HILLS





### Entrance Hallway

### Lounge

13' 5" x 12' 4" (4.09m x 3.76m)

### Kitchen

14' 0" x 9' 1" (4.27m x 2.77m)

### Conservatory

16' 7" x 9' 1" (5.05m x 2.77m)

### Downstairs W.C.

5' 0" x 2' 8" (1.52m x 0.81m)

### Landing

### Bedroom One

13' 6" x 10' 1" (4.11m x 3.07m)

### Bedroom Two

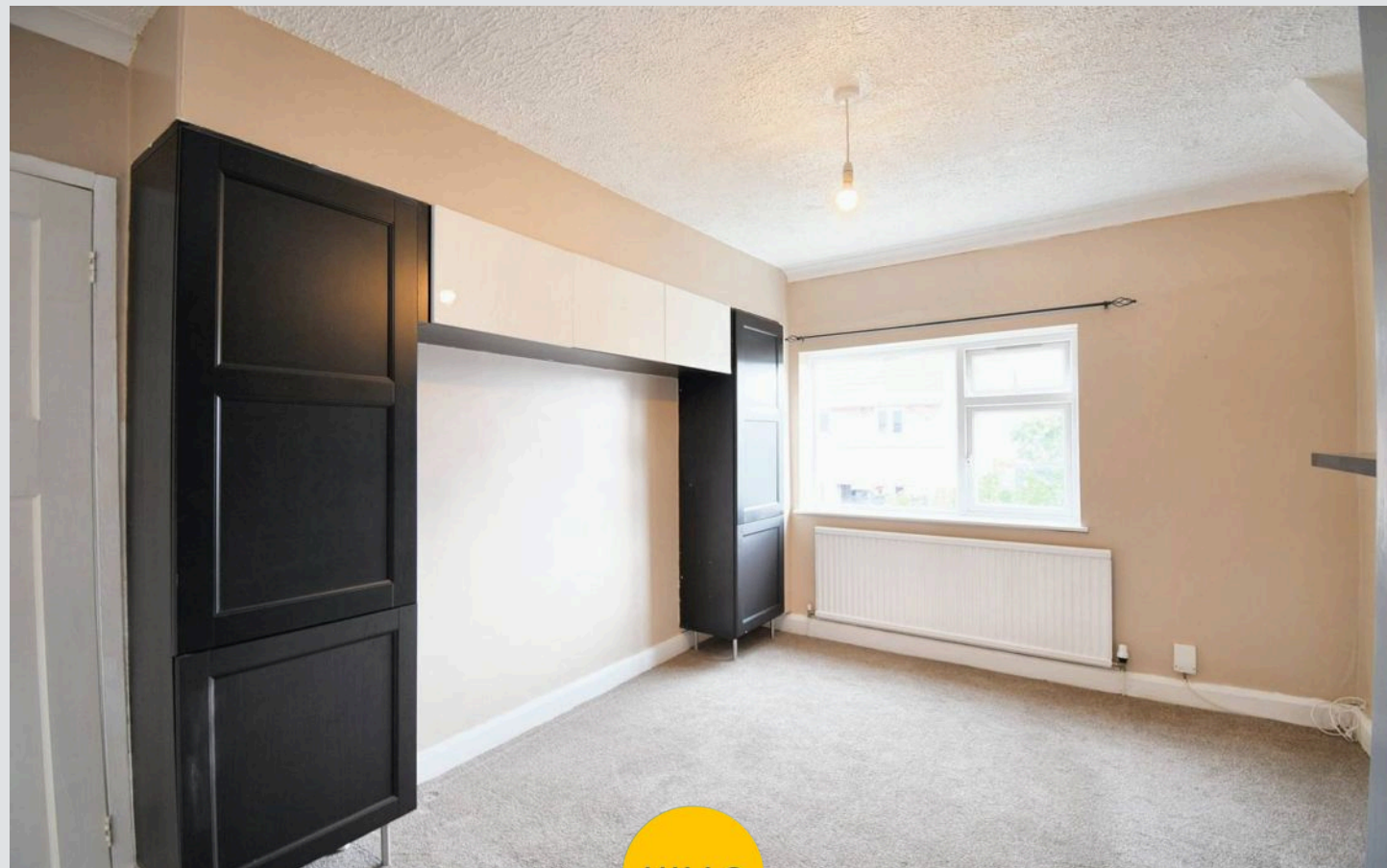
10' 8" x 9' 3" (3.25m x 2.82m)

### Bedroom Three

6' 9" x 9' 4" (2.06m x 2.84m)

### Bathroom

6' 1" x 5' 9" (1.85m x 1.75m)



HILLS

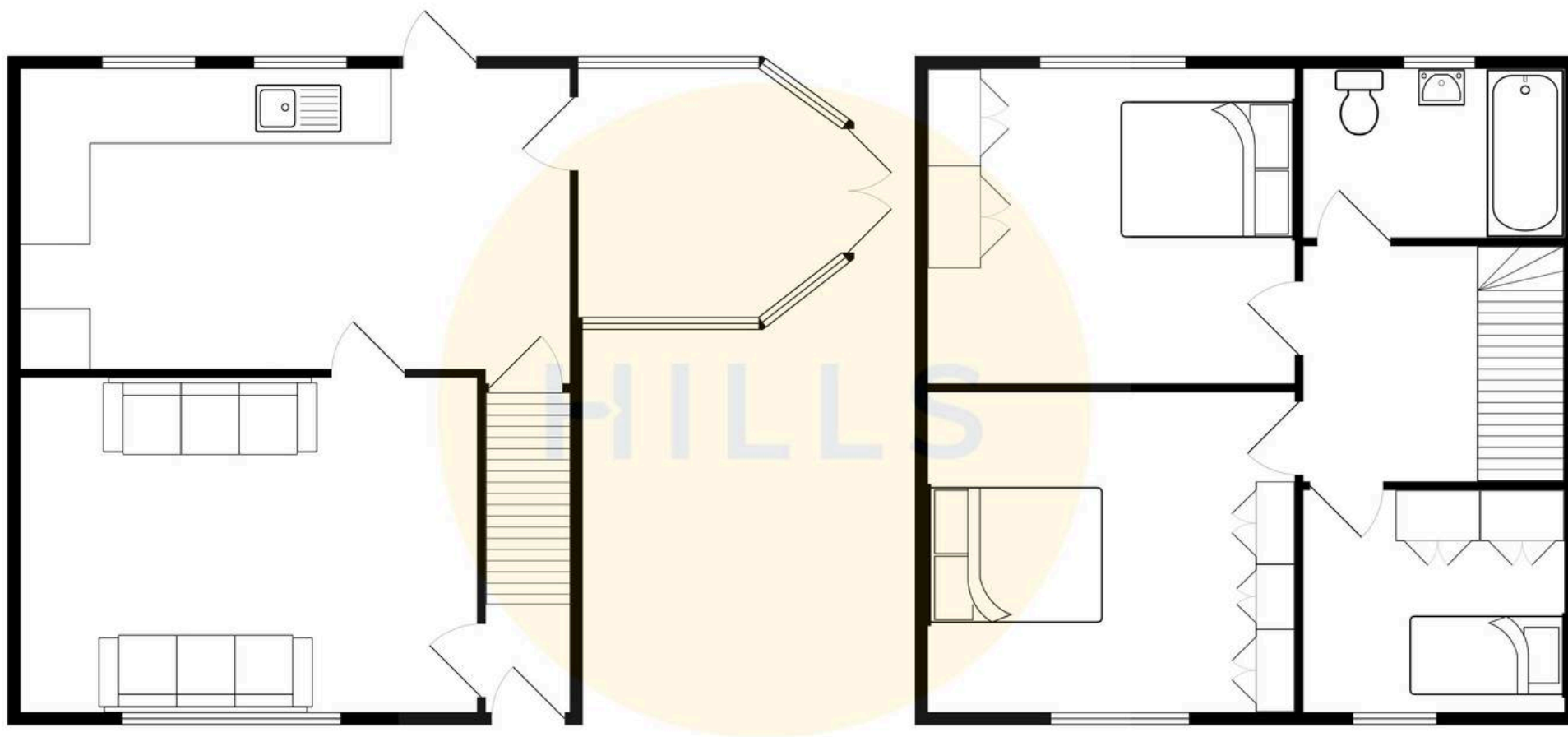






HILLS









## Hills | Salfords Estate Agent

Hills Residential, Sentinel House Albert Street – M30 0SS

0161 707 4900

[sales@hills.agency](mailto:sales@hills.agency)

[www.hills.agency/](http://www.hills.agency/)



THE PROPERTY MISDESCRIPTIONS ACT 1991 The Agent has not tested any apparatus, equipment, fixtures and fittings or services and so cannot verify that they are in working order or fit for the purpose. A Buyer is advised to obtain verification from their Solicitor or Surveyor. References to the Tenure of a Property are based on information supplied by the Seller. The Agent has not had sight of the title documents. A Buyer is advised to obtain verification from their Solicitor. You are advised to check the availability of this property before travelling any distance to view. Every effort and precaution has been made to ensure these particulars are correct and not misleading but their accuracy is not guaranteed nor do they form part of any contract. If there is any point which is of particular importance to you, please contact us and we will provide any information you require. This is advisable, particularly if you intend to travel some distance to view the property. The mention of any appliances and services within these details does not imply that they are in full and efficient working order. These particulars are in draft form awaiting Vendors confirmation of their accuracy. These details must therefore be taken as a guide only.