

Thorp Street, Eccles
Manchester



In Excess of £200,000

46 Thorp Street

Eccles, Manchester

This fantastic and extended two bedroom property is coming to the market CHAIN FREE! Benefitting from two double bedrooms, a spacious lounge and an extended contemporary fitted kitchen!

Council Tax band: A

Tenure: Leasehold

- Extended two bedroom terraced property coming to the market chain free!
- Lovely high ceilings and spacious rooms
- Extended modern kitchen diner
- Spacious lounge
- Contemporary shower room
- Two generous sized bedrooms
- Within Walking Distance of Both Eccles Town Centre and the Trafford Centre, Providing Access to a Range of Amenities
- Close to Excellent Transport Links Throughout Manchester, Including into Salford Quays, Media City and Manchester City Centre
- Viewing is Highly Recommended!



HILLS



Entrance

Living room

14' 1" x 11' 3" (4.30m x 3.43m)

Kitchen/diner

20' 11" x 14' 3" (6.38m x 4.35m)

Bedroom 1

12' 2" x 15' 0" (3.71m x 4.57m)

Bedroom 2

8' 3" x 14' 4" (2.51m x 4.36m)

Bathroom

9' 3" x 5' 6" (2.83m x 1.68m)



HILLS



Entrance

Living room

14' 1" x 11' 3" (4.30m x 3.43m)

Kitchen/diner

20' 11" x 14' 3" (6.38m x 4.35m)

Bedroom 1

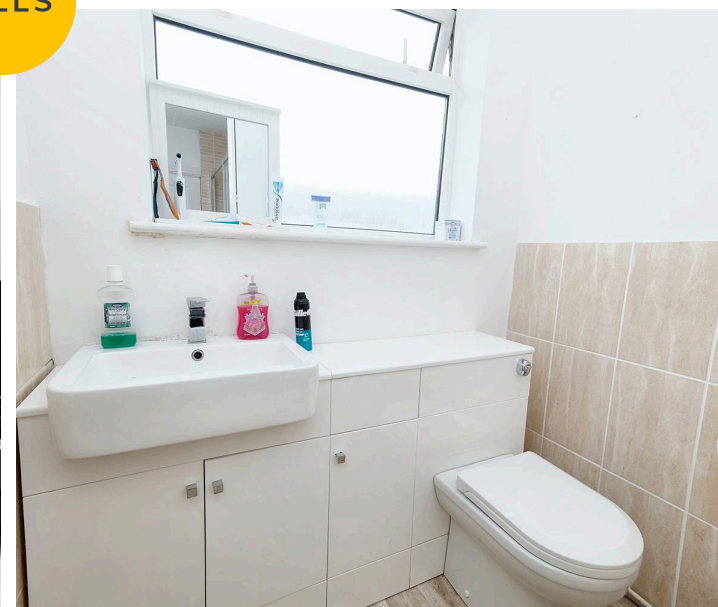
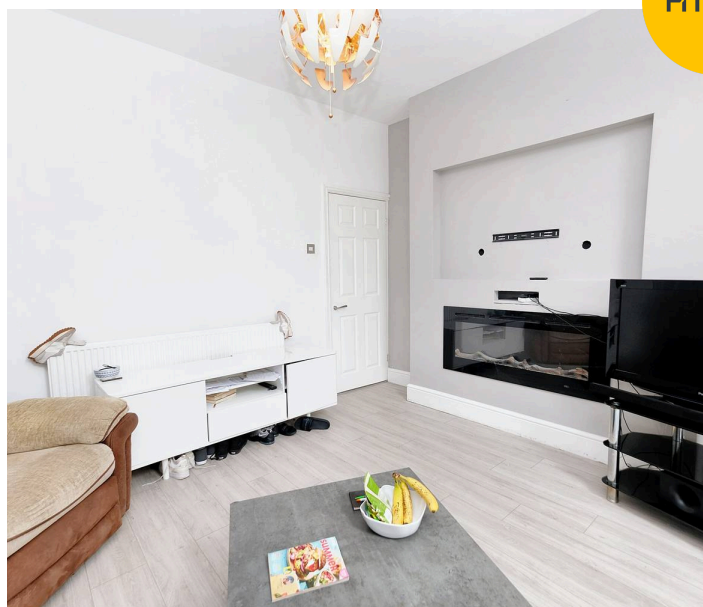
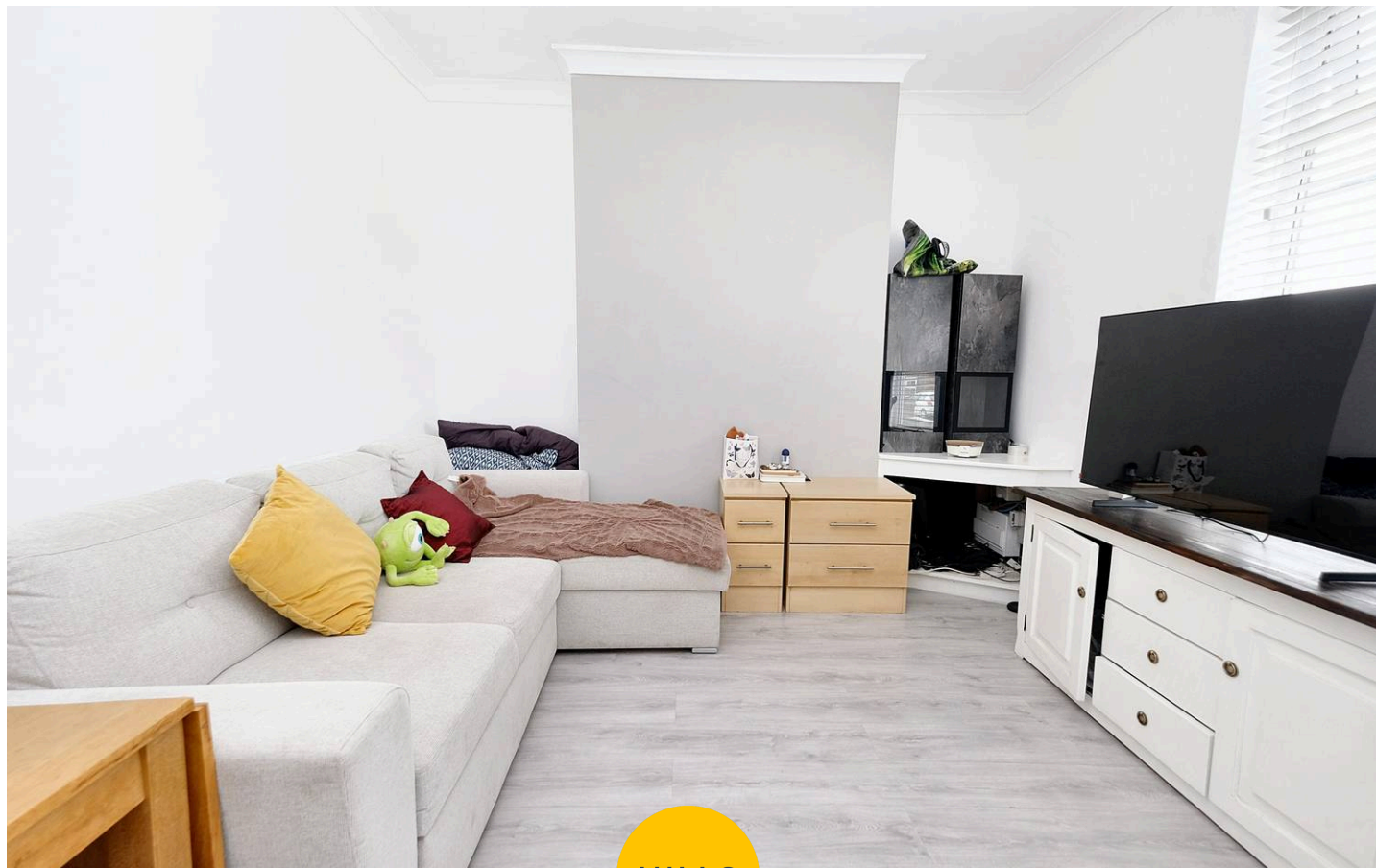
12' 2" x 15' 0" (3.71m x 4.57m)

Bedroom 2

8' 3" x 14' 4" (2.51m x 4.36m)

Bathroom

9' 3" x 5' 6" (2.83m x 1.68m)







HILLS

Hills | Salfords Estate Agent

Hills Residential, Sentinel House Albert Street – M30 0SS

0161 707 4900

sales@hills.agency

www.hills.agency/



THE PROPERTY MISDESCRIPTIONS ACT 1991 The Agent has not tested any apparatus, equipment, fixtures and fittings or services and so cannot verify that they are in working order or fit for the purpose. A Buyer is advised to obtain verification from their Solicitor or Surveyor. References to the Tenure of a Property are based on information supplied by the Seller. The Agent has not had sight of the title documents. A Buyer is advised to obtain verification from their Solicitor. You are advised to check the availability of this property before travelling any distance to view. Every effort and precaution has been made to ensure these particulars are correct and not misleading but their accuracy is not guaranteed nor do they form part of any contract. If there is any point which is of particular importance to you, please contact us and we will provide any information you require. This is advisable, particularly if you intend to travel some distance to view the property. The mention of any appliances and services within these details does not imply that they are in full and efficient working order. These particulars are in draft form awaiting Vendors confirmation of their accuracy. These details must therefore be taken as a guide only.