

Ellastone Road, Salford

Salford



In Excess of £450,000

3 Ellastone Road

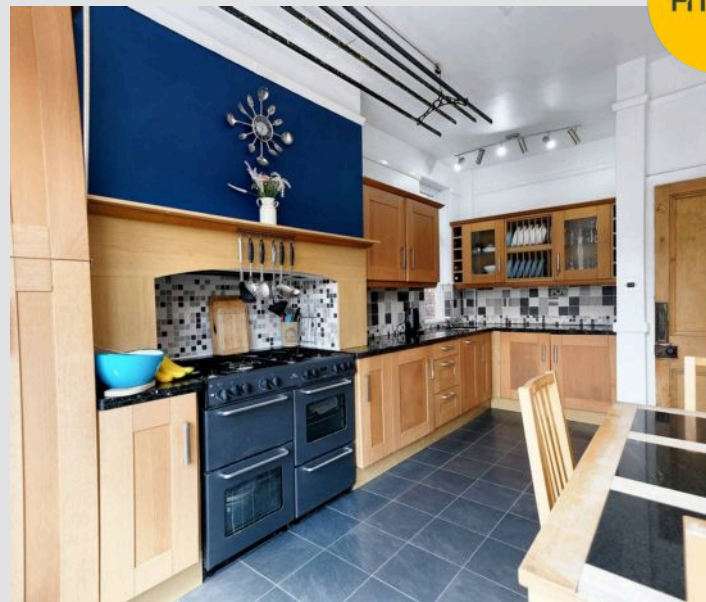
Salford, Salford

Situated on a quiet CUL-DE-SAC is this STUNNING FOUR BEDROOM family home with a SPACIOUS MODERN FITTED KITCHEN, FOUR-PIECE MODERN FITTED BATHROOM, A FANTASTIC SOUTH FACING GARDEN AND A CELLAR!

Council Tax band: D

Tenure: Leasehold

- Beautiful four bedroom semi-detached property full of character!
- Well kept south facing garden to the rear with Composite decking, patio area and brick built outbuilding used for storage!
- Spacious throughout, including two large reception rooms and a modern fitted kitchen
- Would make the ideal family home, viewing comes recommended
- Quiet cul-de-sac location, close to Buile Hill Park
- Four generous sized bedrooms
- Situated over three floors and benefiting from a Cellar!
- Modern four piece bathroom suite!
- Two wood burning stoves, high ceilings and original features throughout!
- Popular location close to excellent transport links, amenities, parks and Salford Royal Hospital



Entrance hallway

19' 2" x 8' 4" (5.85m x 2.55m)

Living room

18' 2" x 12' 10" (5.53m x 3.92m)

Dining room

17' 1" x 12' 8" (5.20m x 3.87m)

Kitchen

17' 8" x 10' 0" (5.39m x 3.04m)

Cellar one

15' 8" x 6' 6" (4.78m x 1.97m)

Cellar W.C

4' 10" x 2' 8" (1.48m x 0.82m)

Cellar two

16' 7" x 6' 6" (5.05m x 1.97m)

Cellar three

11' 10" x 9' 6" (3.60m x 2.90m)

Cellar four

15' 9" x 9' 10" (4.80m x 2.99m)

Bedroom 1

14' 0" x 18' 0" (4.26m x 5.49m)

Bedroom 2

13' 2" x 18' 6" (4.01m x 5.64m)

Bedroom 3

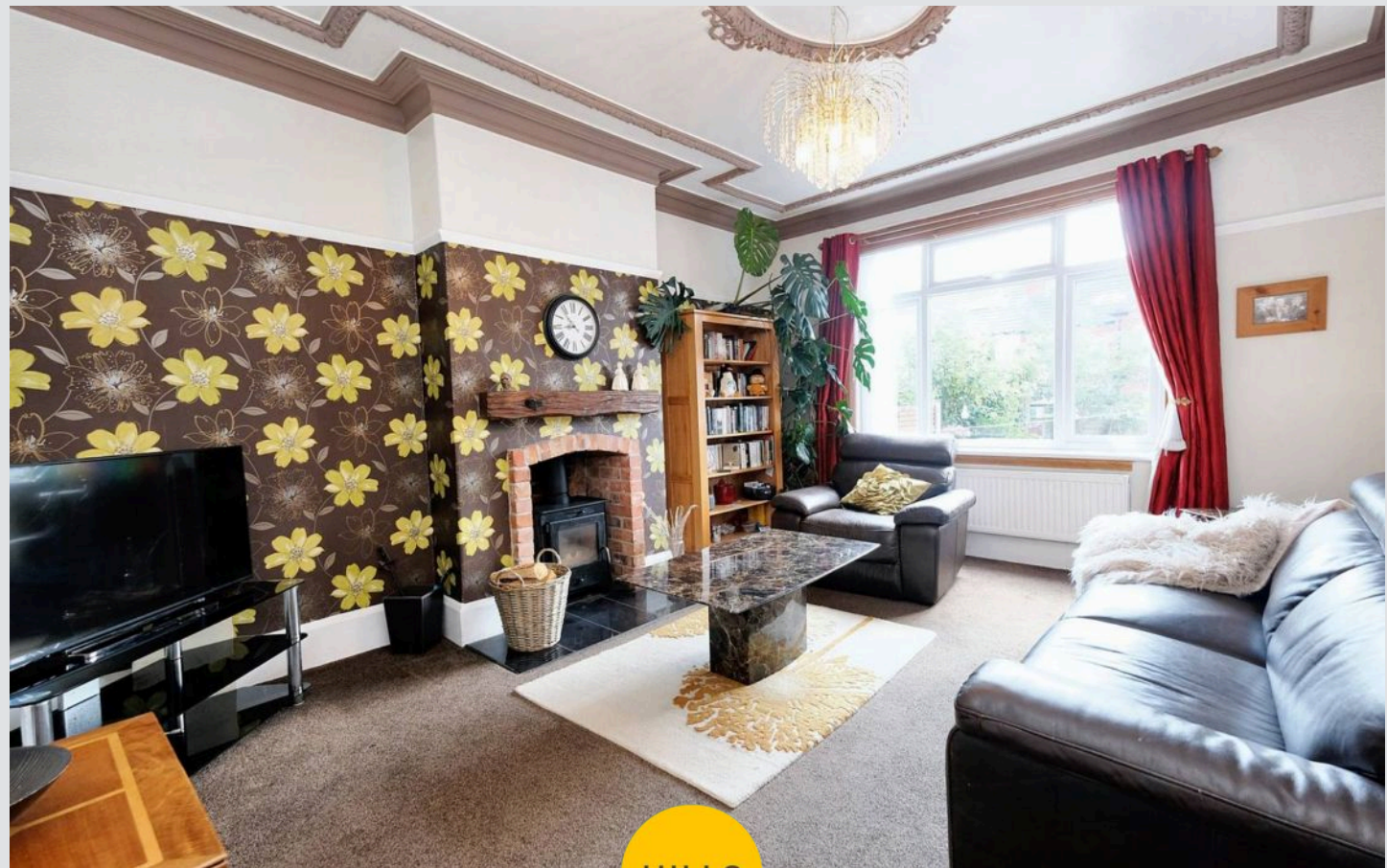
9' 10" x 11' 3" (2.99m x 3.43m)

Bedroom 4

9' 1" x 8' 2" (2.76m x 2.50m)

Bathroom

6' 11" x 8' 2" (2.10m x 2.49m)



HILLS



Entrance hallway

19' 2" x 8' 4" (5.85m x 2.55m)

Living room

18' 2" x 12' 10" (5.53m x 3.92m)

Dining room

17' 1" x 12' 8" (5.20m x 3.87m)

Kitchen

17' 8" x 10' 0" (5.39m x 3.04m)

Cellar one

15' 8" x 6' 6" (4.78m x 1.97m)

Cellar W.C

4' 10" x 2' 8" (1.48m x 0.82m)

Cellar two

16' 7" x 6' 6" (5.05m x 1.97m)

Cellar three

11' 10" x 9' 6" (3.60m x 2.90m)

Cellar four

15' 9" x 9' 10" (4.80m x 2.99m)

Bedroom 1

14' 0" x 18' 0" (4.26m x 5.49m)

Bedroom 2

13' 2" x 18' 6" (4.01m x 5.64m)

Bedroom 3

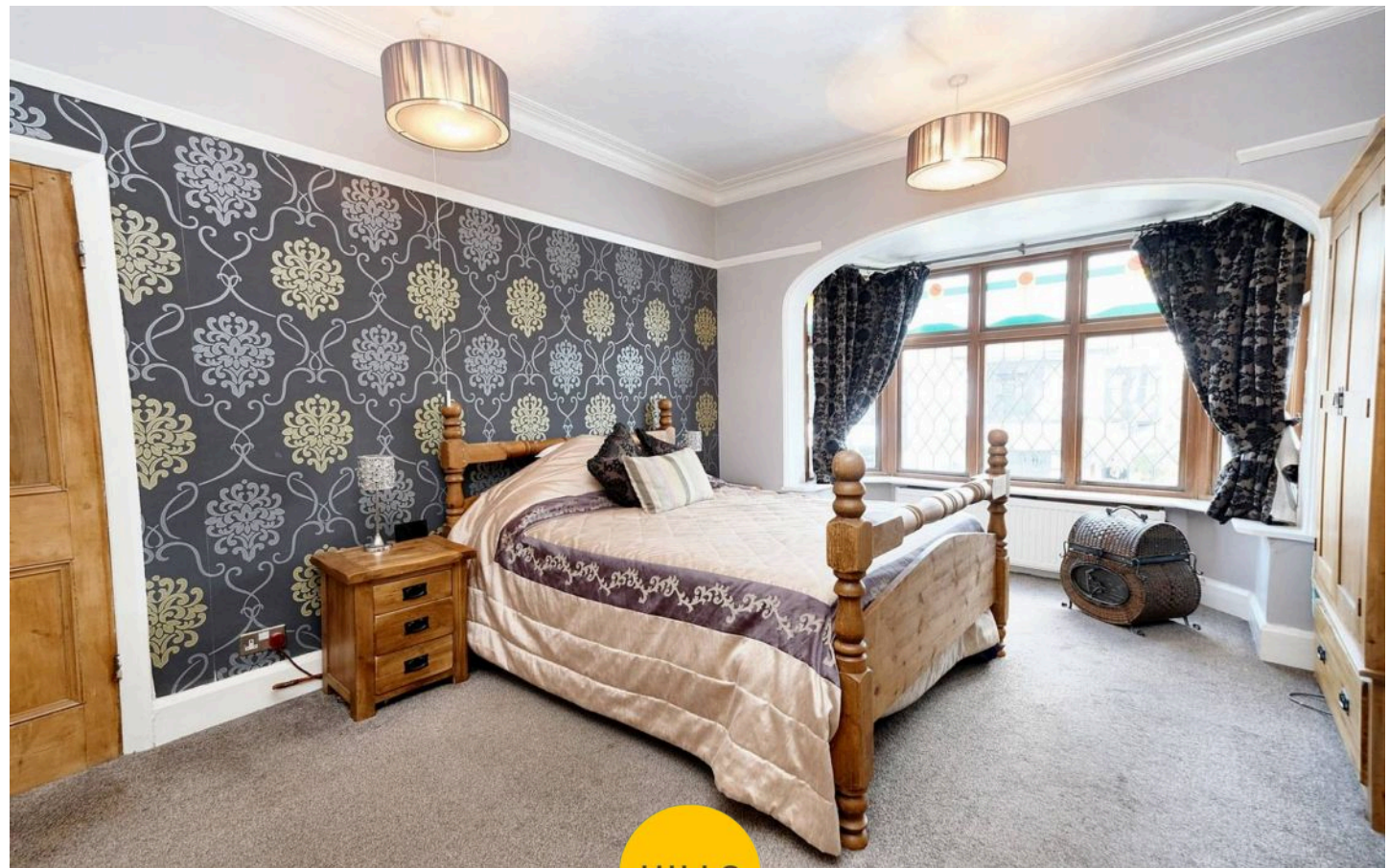
9' 10" x 11' 3" (2.99m x 3.43m)

Bedroom 4

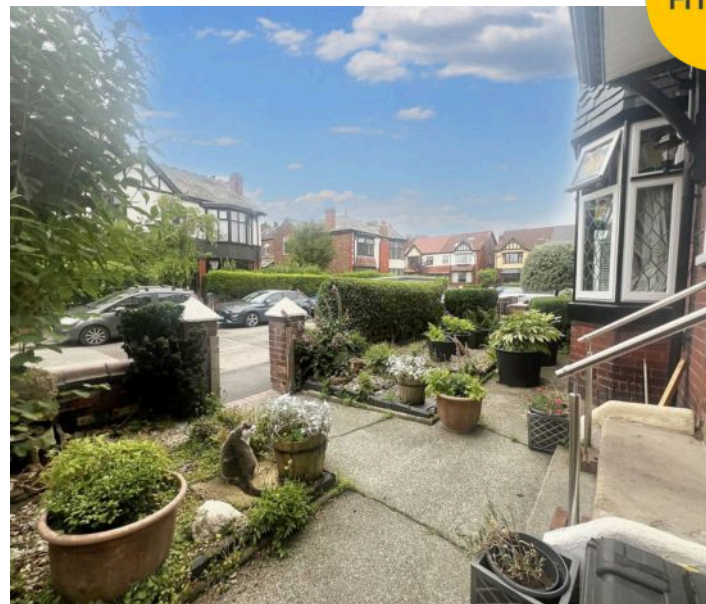
9' 1" x 8' 2" (2.76m x 2.50m)

Bathroom

6' 11" x 8' 2" (2.10m x 2.49m)



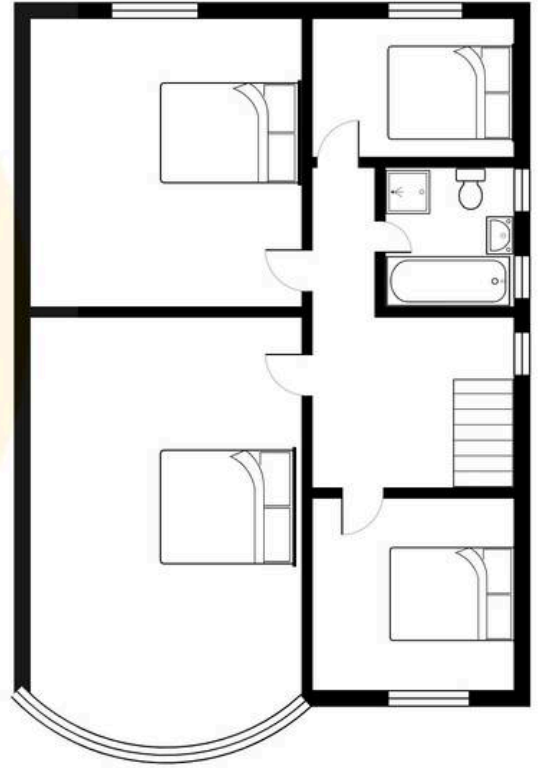
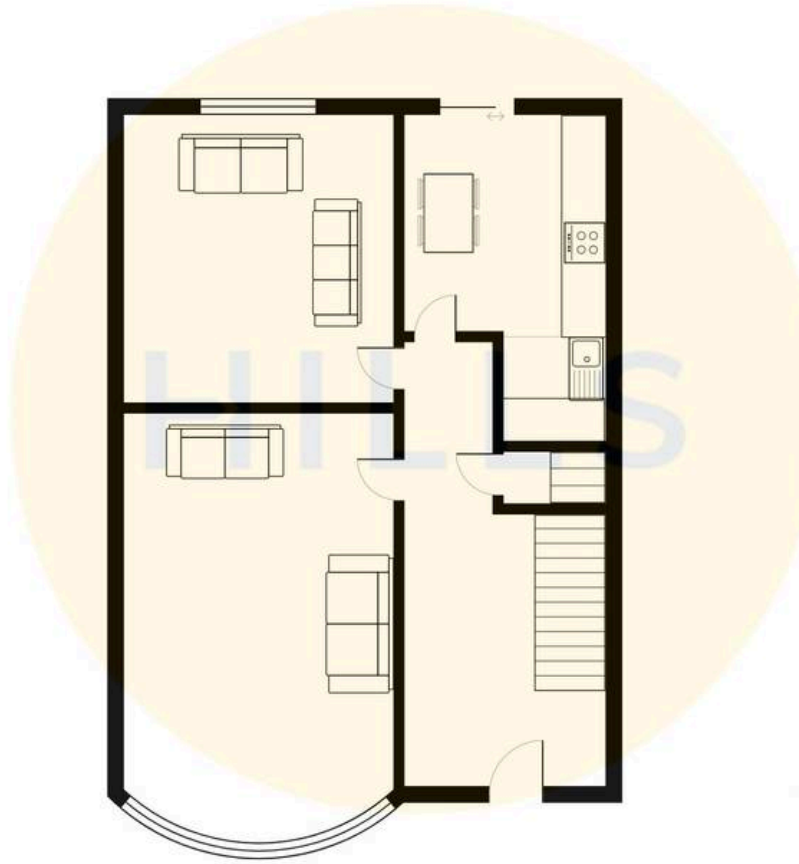
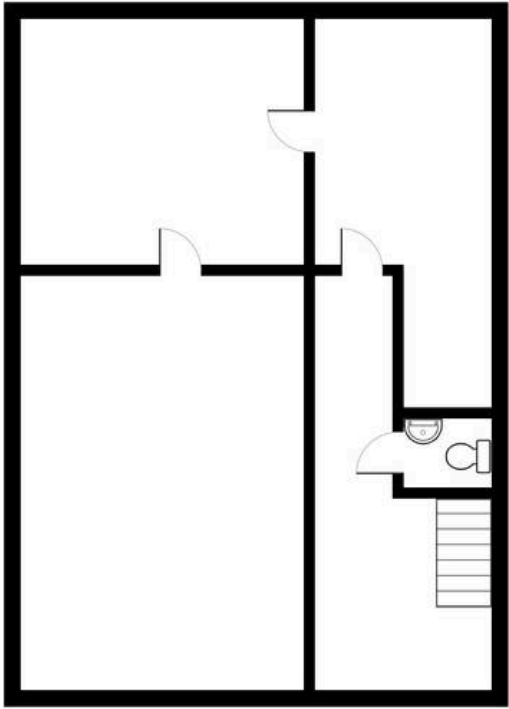
HILLS





HILLS







Hills | Salfords Estate Agent

Hills Residential, Sentinel House Albert Street – M30 0SS

0161 707 4900

sales@hills.agency

www.hills.agency/



THE PROPERTY MISDESCRIPTIONS ACT 1991 The Agent has not tested any apparatus, equipment, fixtures and fittings or services and so cannot verify that they are in working order or fit for the purpose. A Buyer is advised to obtain verification from their Solicitor or Surveyor. References to the Tenure of a Property are based on information supplied by the Seller. The Agent has not had sight of the title documents. A Buyer is advised to obtain verification from their Solicitor. You are advised to check the availability of this property before travelling any distance to view. Every effort and precaution has been made to ensure these particulars are correct and not misleading but their accuracy is not guaranteed nor do they form part of any contract. If there is any point which is of particular importance to you, please contact us and we will provide any information you require. This is advisable, particularly if you intend to travel some distance to view the property. The mention of any appliances and services within these details does not imply that they are in full and efficient working order. These particulars are in draft form awaiting Vendors confirmation of their accuracy. These details must therefore be taken as a guide only.