



Monks Court Canterbury Gardens

Salford

HILLS

£130,000

Monks Court

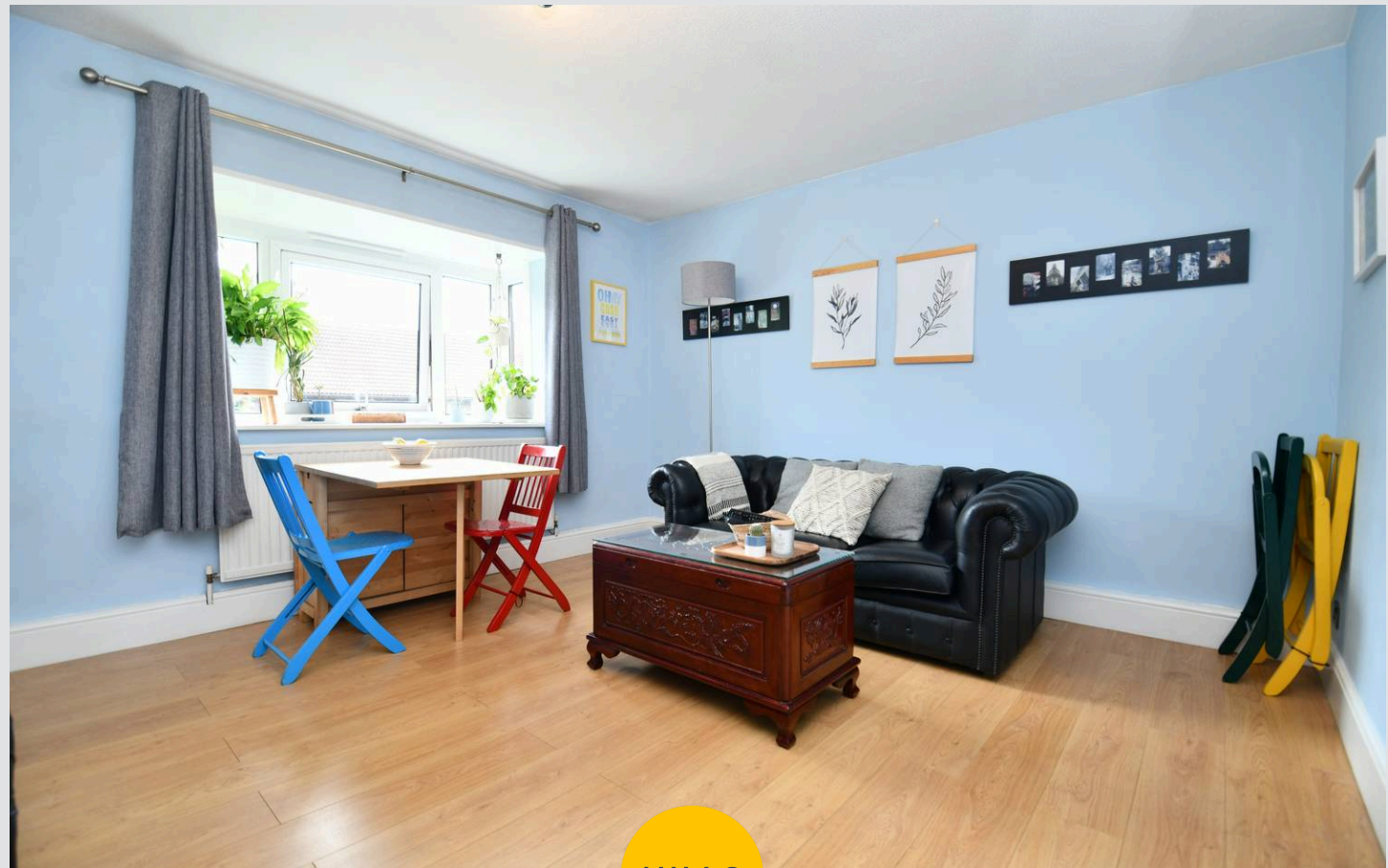
Salford

Stylish Two Bedroom Apartment on the Popular Canterbury Gardens Development, Just a Stone's Throw from Ladywell Tram Stop, Providing Direct Access into Salford Quays and Manchester City Centre!

Council Tax band: A

Tenure: Leasehold

- Stylish Two Bedroom Apartment
- Located on the Popular Canterbury Gardens Development
- Just a Stone's Throw from Ladywell Tram Stop, Providing Direct Access into Salford Quays, Media City and Manchester City Centre
- Spacious Lounge Diner
- Modern Kitchen and a Stylish Three-Piece Bathroom
- Two Generously-Sized Bedrooms
- Benefits from Communal Parking
- Well-Maintained Communal Gardens
- Within Walking Distance of Eccles Town Centre and West One Retail Park
- Viewing is Highly Recommended!



HILLS



Entrance Hallway

Lounge Diner

13' 10" x 12' 5" (4.21m x 3.79m)

Kitchen

9' 11" x 7' 10" (3.03m x 2.40m)

Bedroom One

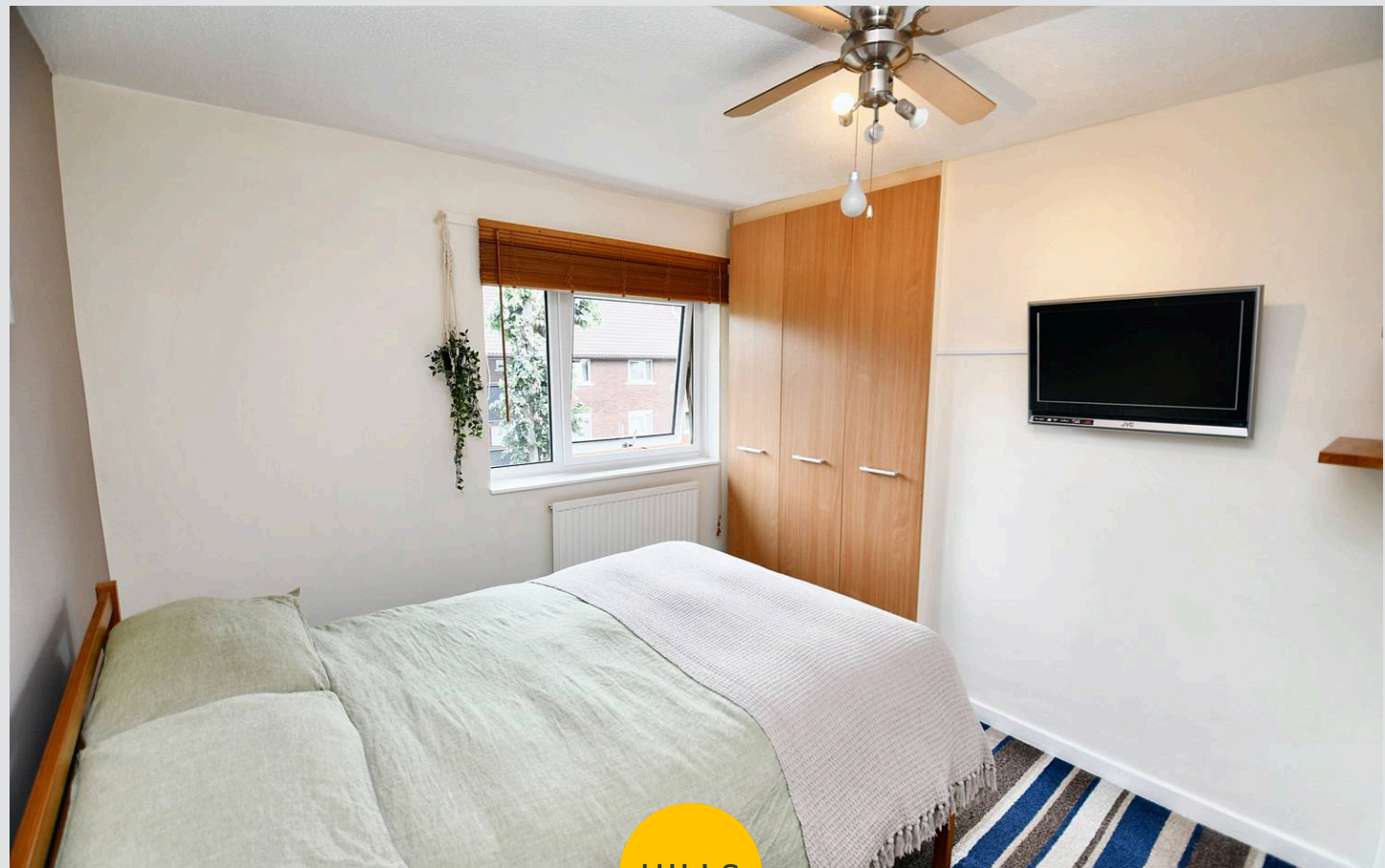
13' 5" x 9' 5" (4.09m x 2.88m)

Bedroom Two

12' 0" x 9' 4" (3.65m x 2.85m)

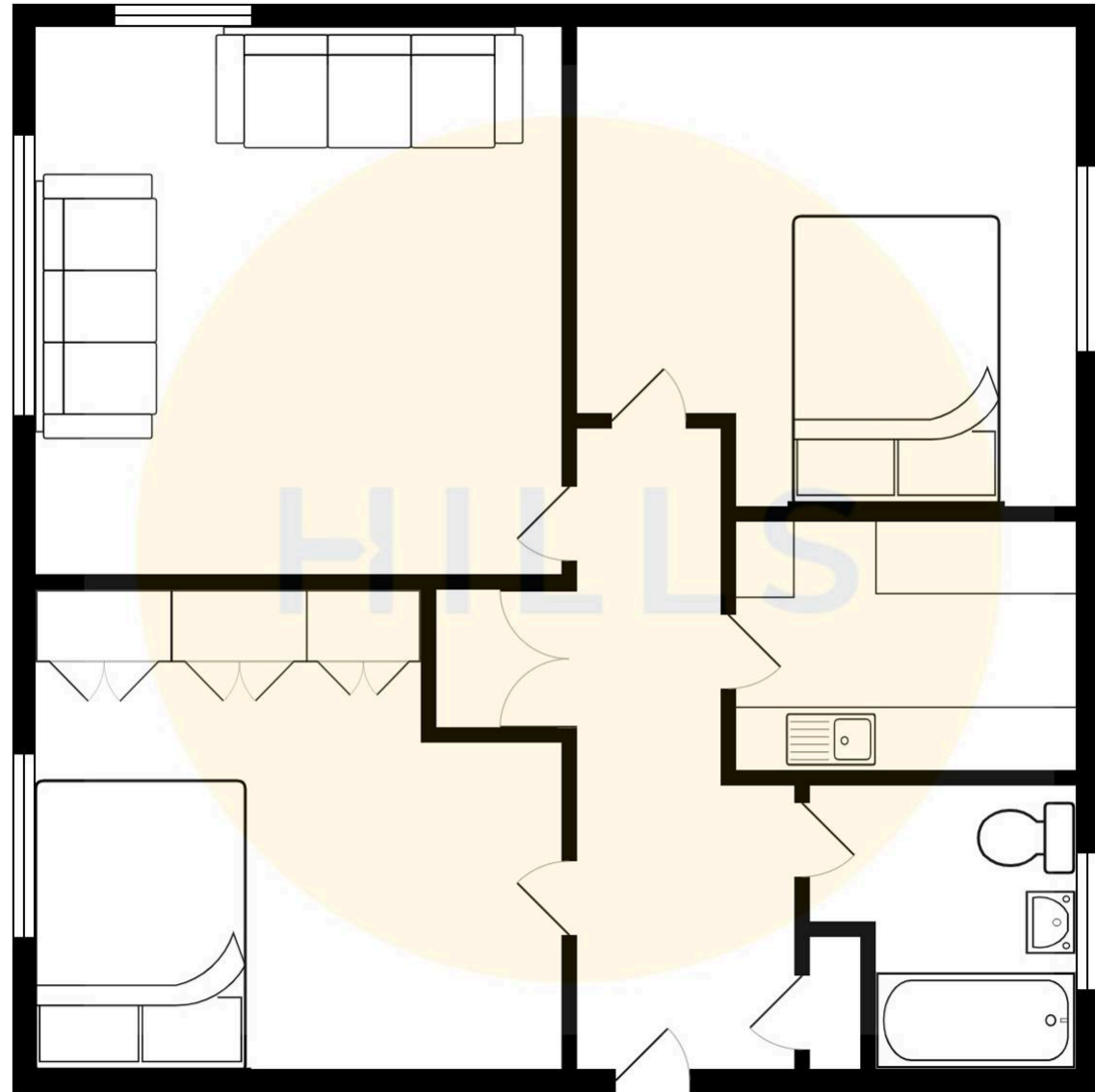
Bathroom

7' 3" x 6' 10" (2.21m x 2.08m)



HILLS







Hills | Salfords Estate Agent

Hills Residential, Sentinel House Albert Street – M30 0SS

0161 707 4900

sales@hills.agency

www.hills.agency/



THE PROPERTY MISDESCRIPTIONS ACT 1991 The Agent has not tested any apparatus, equipment, fixtures and fittings or services and so cannot verify that they are in working order or fit for the purpose. A Buyer is advised to obtain verification from their Solicitor or Surveyor. References to the Tenure of a Property are based on information supplied by the Seller. The Agent has not had sight of the title documents. A Buyer is advised to obtain verification from their Solicitor. You are advised to check the availability of this property before travelling any distance to view. Every effort and precaution has been made to ensure these particulars are correct and not misleading but their accuracy is not guaranteed nor do they form part of any contract. If there is any point which is of particular importance to you, please contact us and we will provide any information you require. This is advisable, particularly if you intend to travel some distance to view the property. The mention of any appliances and services within these details does not imply that they are in full and efficient working order. These particulars are in draft form awaiting Vendors confirmation of their accuracy. These details must therefore be taken as a guide only.