



Basset Avenue

Salford



In Excess of £130,000

Basset Avenue

Salford

****Spacious Two Bedroom Flat Benefitting from a modern fitted kitchen and bathroom and within walking distance to Manchester City Centre! ****

Council Tax band: A

Tenure: Leasehold

- Fantastic two bedroom flat within walking distance to Manchester City Centre!
- Two generous sized bedrooms
- Well-kept communal gardens
- Modern fitted kitchen and breakfast bar
- Spacious living area with great views of the communal gardens
- Contemporary three-piece bathroom suite
- Fantastic transport links and amenities nearby!
- Within walking distance to Salford Shopping centre and Salford University



HILLS



Entrance Hallway

10' 5" x 8' 11" (3.18m x 2.73m)

Lounge

10' 4" x 15' 9" (3.16m x 4.79m)

Kitchen

11' 3" x 6' 9" (3.43m x 2.05m)

Bedroom One

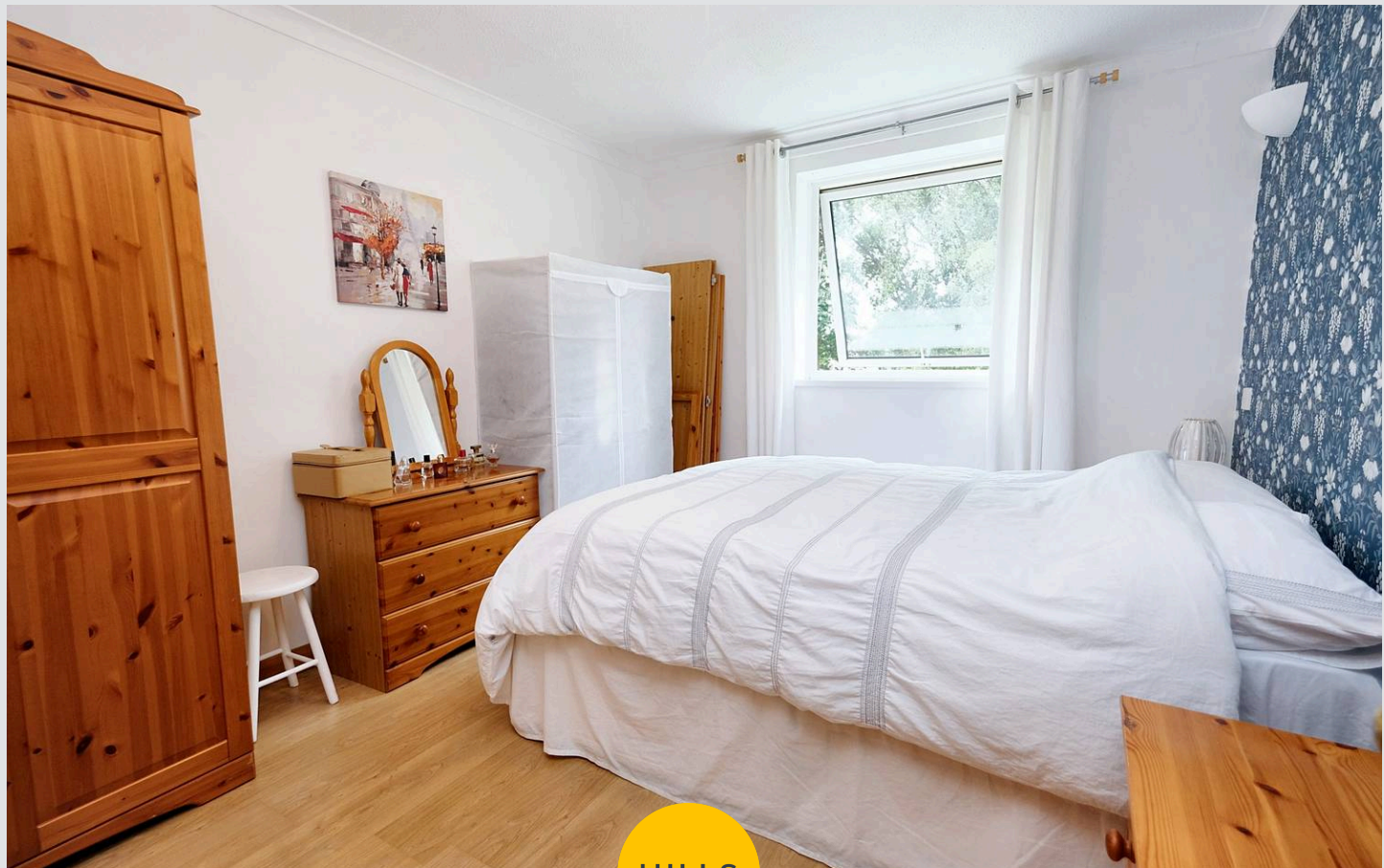
12' 5" x 9' 10" (3.78m x 3.00m)

Bedroom Two

9' 3" x 7' 2" (2.82m x 2.19m)

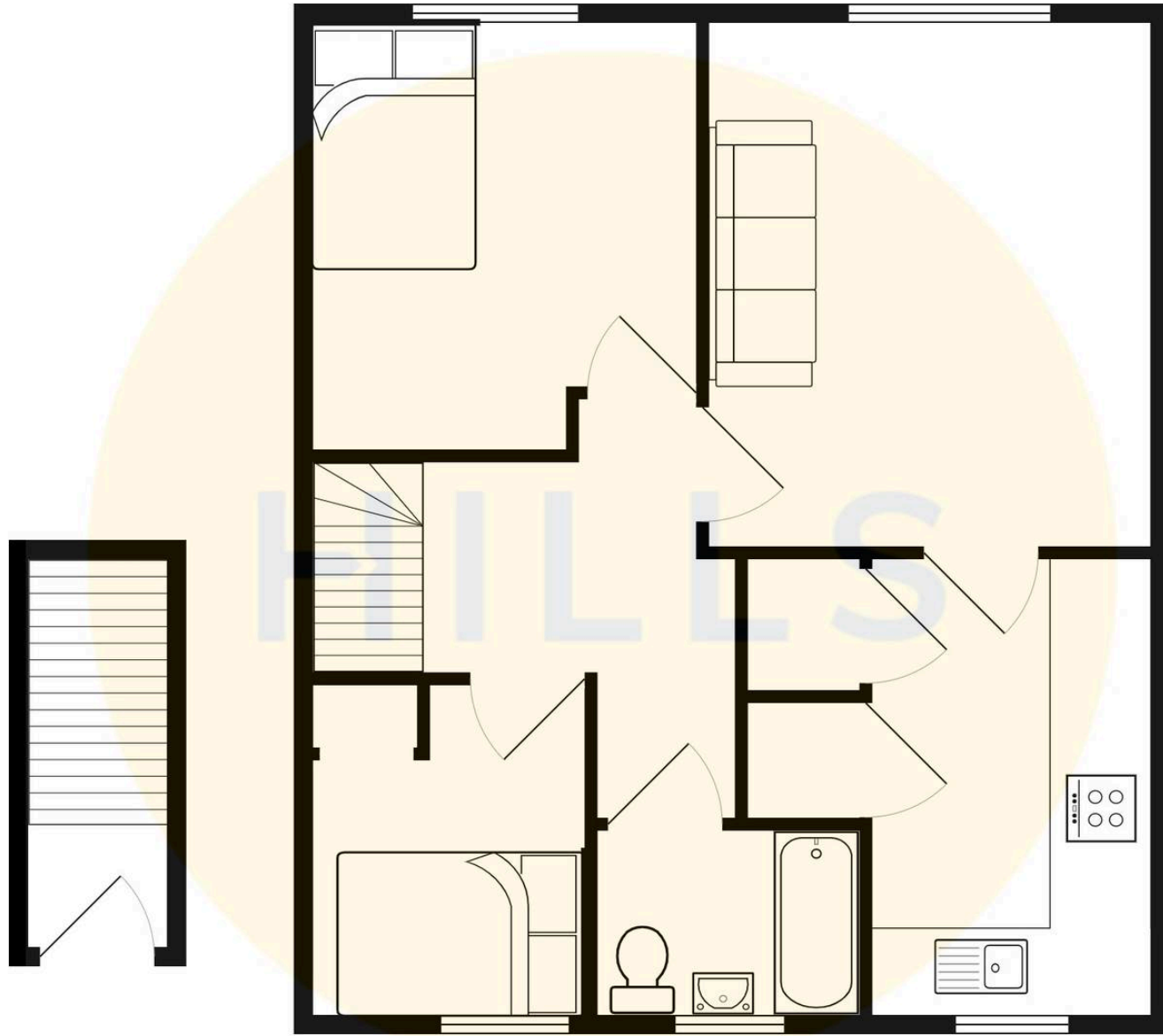
Bathroom

7' 11" x 6' 0" (2.42m x 1.84m)



HILLS







Hills | Salfords Estate Agent

Hills Residential, Sentinel House Albert Street – M30 0SS

0161 707 4900

sales@hills.agency

www.hills.agency/



THE PROPERTY MISDESCRIPTIONS ACT 1991 The Agent has not tested any apparatus, equipment, fixtures and fittings or services and so cannot verify that they are in working order or fit for the purpose. A Buyer is advised to obtain verification from their Solicitor or Surveyor. References to the Tenure of a Property are based on information supplied by the Seller. The Agent has not had sight of the title documents. A Buyer is advised to obtain verification from their Solicitor. You are advised to check the availability of this property before travelling any distance to view. Every effort and precaution has been made to ensure these particulars are correct and not misleading but their accuracy is not guaranteed nor do they form part of any contract. If there is any point which is of particular importance to you, please contact us and we will provide any information you require. This is advisable, particularly if you intend to travel some distance to view the property. The mention of any appliances and services within these details does not imply that they are in full and efficient working order. These particulars are in draft form awaiting Vendors confirmation of their accuracy. These details must therefore be taken as a guide only.