



Argosy Drive, Eccles  
Manchester



£130,000



# Argosy Drive

Eccles, Manchester

SPACIOUS two bedroom FIRST FLOOR FLAT benefitting from a MODERN FITTED KITCHEN AND BATHROOM, SEPARATE UTILITY AND A BALCONY OVERLOOKING THE COMMUNAL GARDENS!

Council Tax band: A

Tenure: Leasehold

- FANTASTIC TWO BEDROOM APARTMENT SITUATED ON THE FIRST FLOOR!
- Modern fitted kitchen with access to a balcony with views overlooking the communal gardens
- Separate utility room
- Well presented and spacious living room
- Two double bedrooms
- Modern fitted shower room
- Quiet residential location
- Benefitting from communal gardens
- Early viewing is essential!
- Excellently Located Close to Amenities & Brilliant Transport Links





### Entrance Hallway

### Lounge

16' 3" x 11' 11" (4.95m x 3.63m)

### Kitchen

10' 6" x 9' 5" (3.20m x 2.86m)

### Bedroom One

12' 5" x 11' 11" (3.78m x 3.63m)

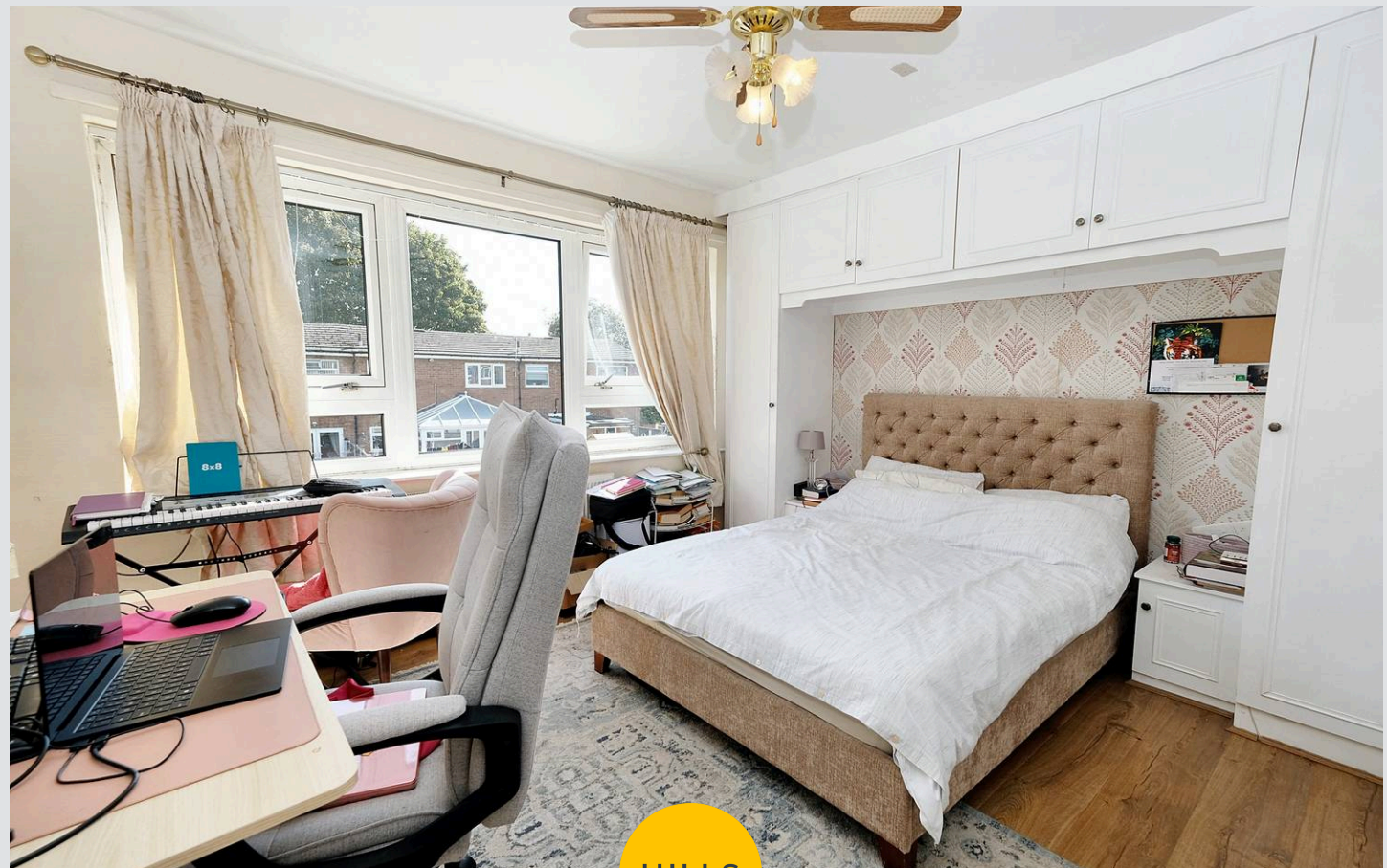
### Bedroom Two

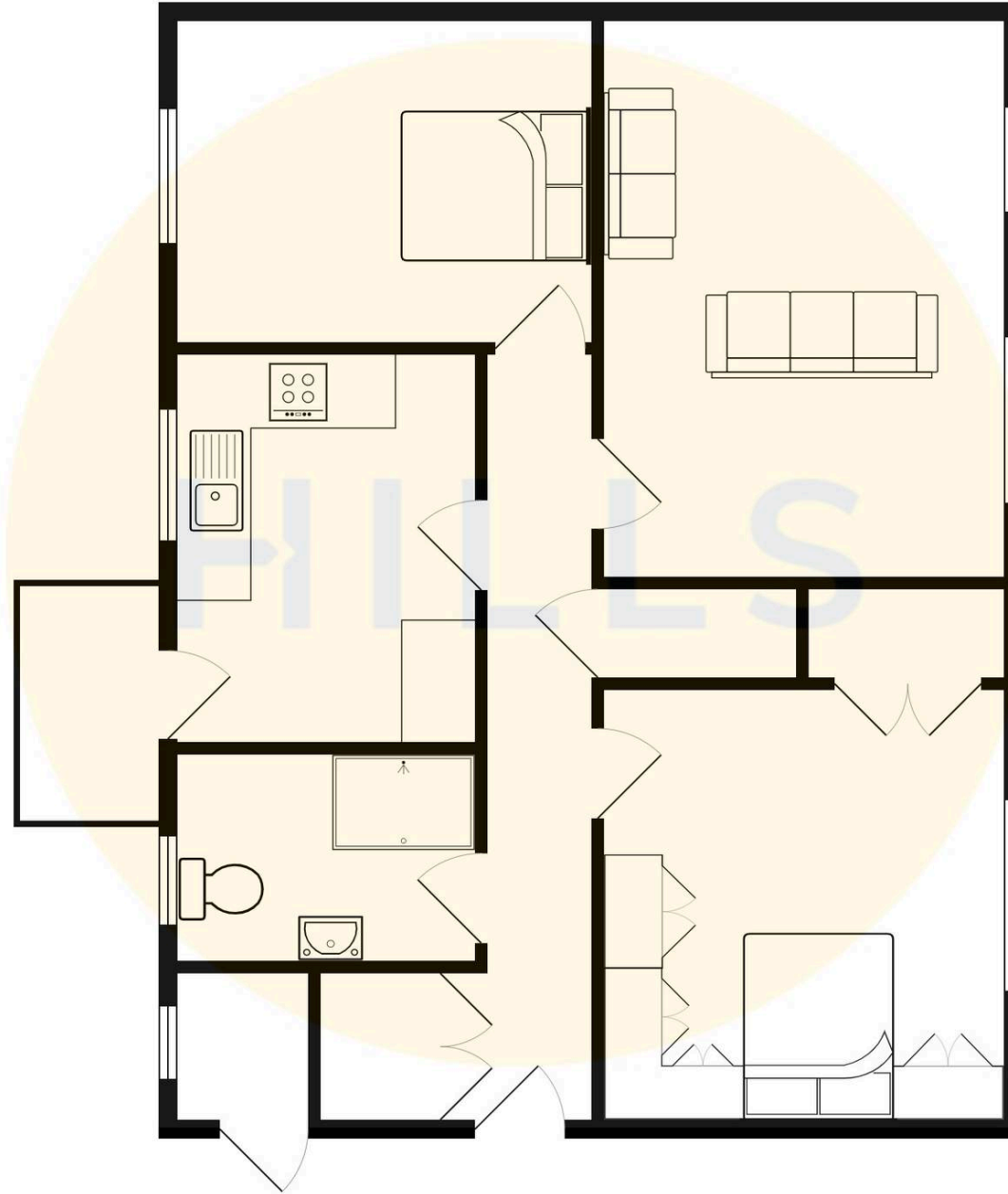
12' 5" x 9' 11" (3.79m x 3.01m)

### Bathroom

9' 5" x 6' 3" (2.86m x 1.90m)

### Utility Room









## Hills | Salfords Estate Agent

Hills Residential, Sentinel House Albert Street – M30 0SS

0161 707 4900

[sales@hills.agency](mailto:sales@hills.agency)

[www.hills.agency/](http://www.hills.agency/)



THE PROPERTY MISDESCRIPTIONS ACT 1991 The Agent has not tested any apparatus, equipment, fixtures and fittings or services and so cannot verify that they are in working order or fit for the purpose. A Buyer is advised to obtain verification from their Solicitor or Surveyor. References to the Tenure of a Property are based on information supplied by the Seller. The Agent has not had sight of the title documents. A Buyer is advised to obtain verification from their Solicitor. You are advised to check the availability of this property before travelling any distance to view. Every effort and precaution has been made to ensure these particulars are correct and not misleading but their accuracy is not guaranteed nor do they form part of any contract. If there is any point which is of particular importance to you, please contact us and we will provide any information you require. This is advisable, particularly if you intend to travel some distance to view the property. The mention of any appliances and services within these details does not imply that they are in full and efficient working order. These particulars are in draft form awaiting Vendors confirmation of their accuracy. These details must therefore be taken as a guide only.