



Aqueduct Way, Eccles

Manchester



Offers in excess of £325,000

Aqueduct Way

Eccles, Manchester

Ideal first home in sought after Havenswood Development within M30. Three generous bedrooms, sleek kitchen/living/dining, private garden. Off-road parking, near shops, parks, schools & transport links. Comfortable, stylish living.

Council Tax band: C

- Located on the Desirable Havenswood Development
- Perfect First Time Buy
- Stunning Open Plan Kitchen, Living & Dining Space
- Spacious Lounge
- Three Generous Bedrooms
- Family Bathroom & Downstairs W.C.
- Private, Sun Drenched, Landscaped Rear Garden
- Off Road Parking For Multiple Cars
- Excellently Located Close to Shops, Parks, Schools & Brilliant Transport Links



HILLS



Lounge

14' 9" x 9' 9" (4.50m x 2.97m)

Kitchen / Diner

17' 5" x 13' 3" (5.31m x 4.04m)

Downstairs W.C.

5' 9" x 3' 1" (1.75m x 0.94m)

Landing**Bedroom One**

11' 1" x 8' 7" (3.38m x 2.62m)

Bedroom Two

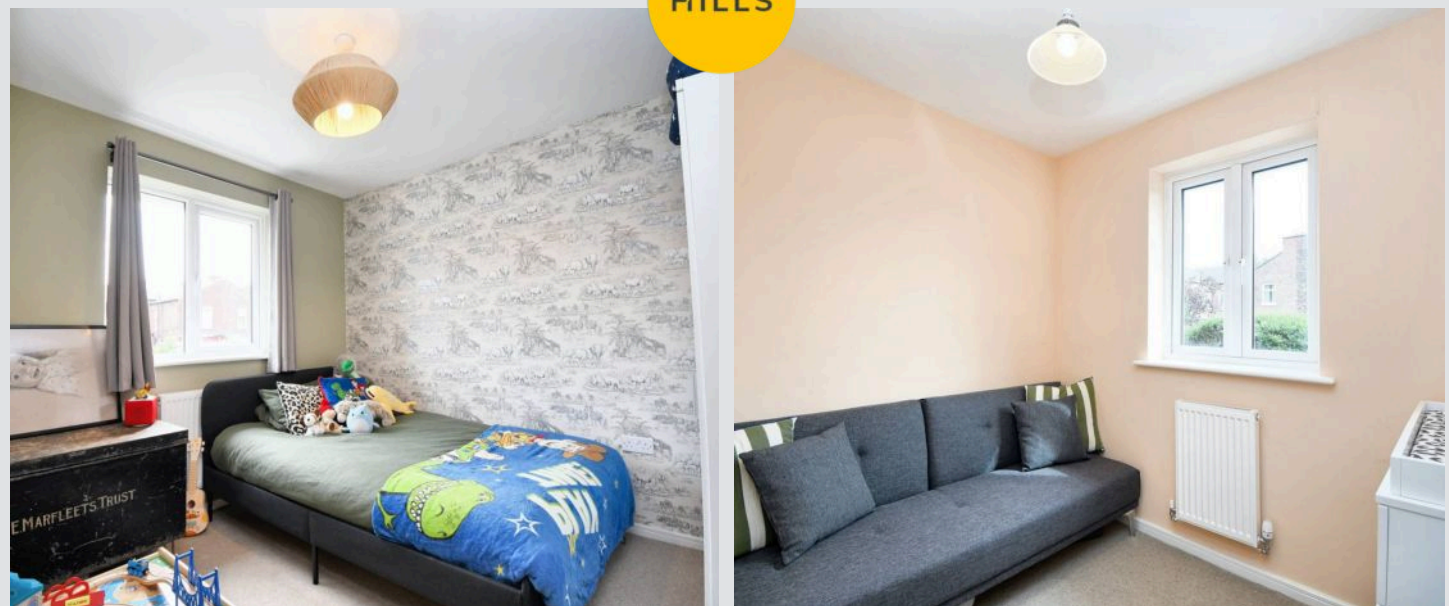
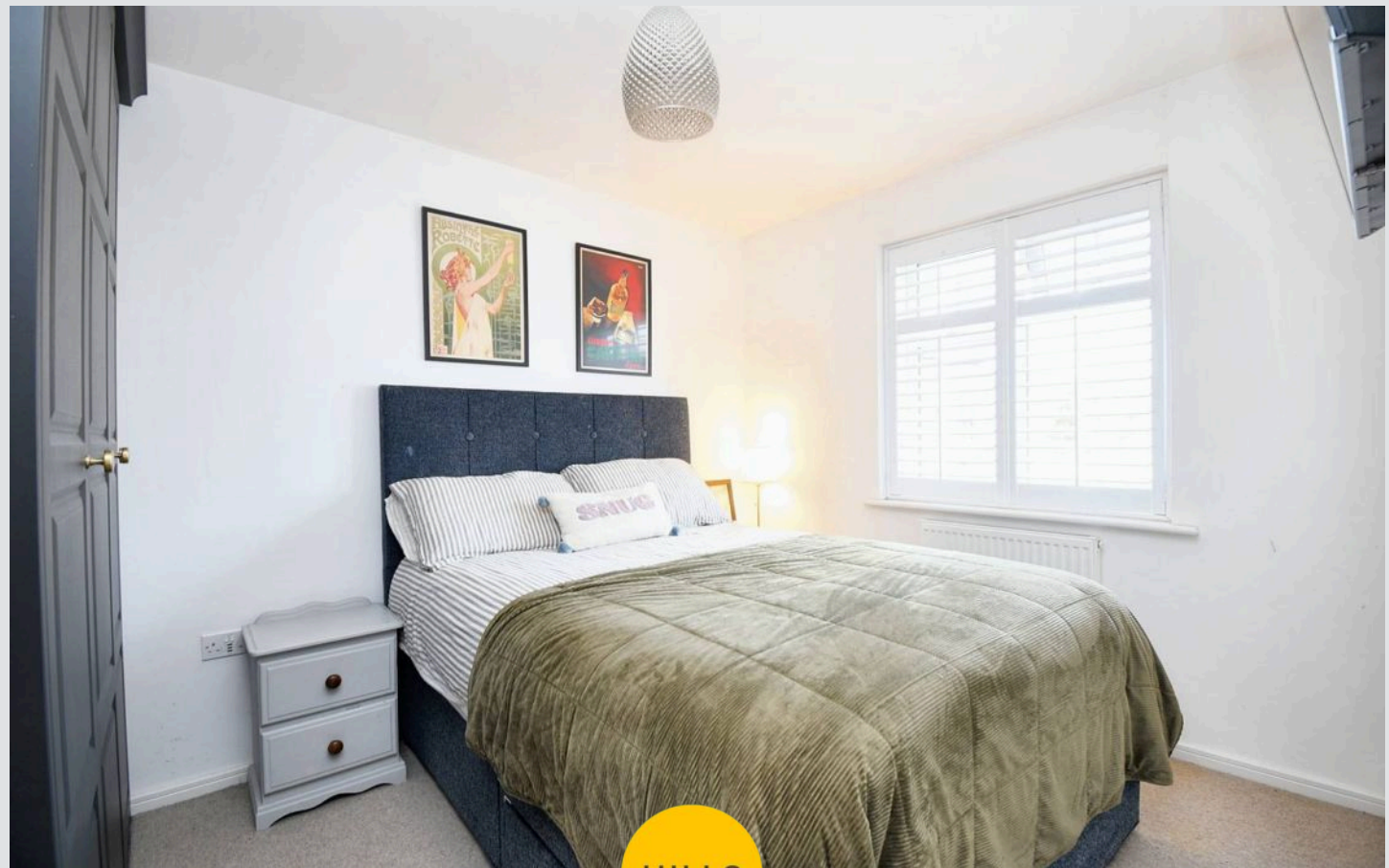
10' 0" x 8' 7" (3.05m x 2.62m)

Bedroom Three

8' 4" x 6' 4" (2.54m x 1.93m)

Bathroom

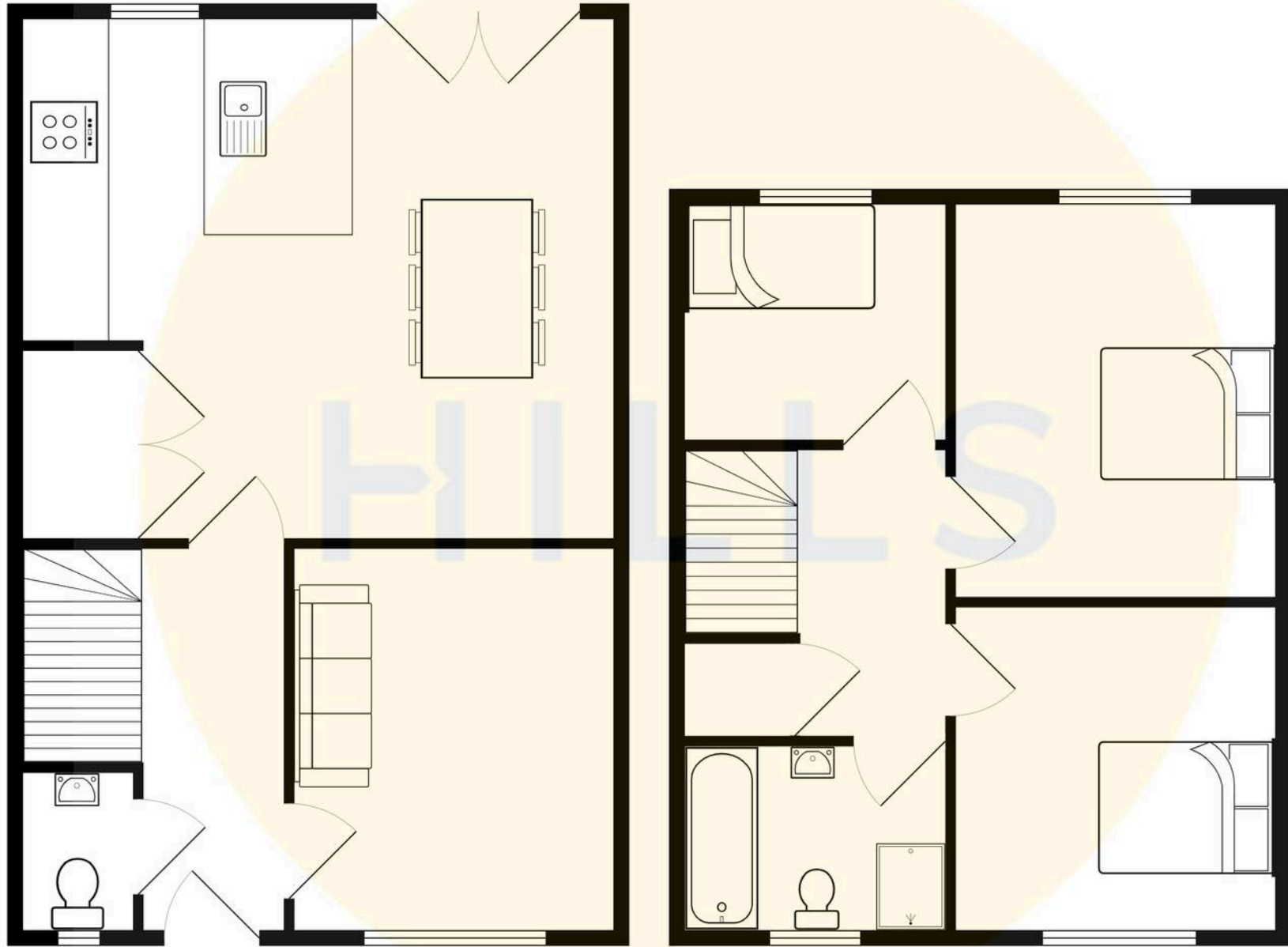
8' 4" x 6' 1" (2.54m x 1.85m)





HILLS







Hills | Salfords Estate Agent

Hills Residential, Sentinel House Albert Street – M30 0SS

0161 707 4900

sales@hills.agency

www.hills.agency/



THE PROPERTY MISDESCRIPTIONS ACT 1991 The Agent has not tested any apparatus, equipment, fixtures and fittings or services and so cannot verify that they are in working order or fit for the purpose. A Buyer is advised to obtain verification from their Solicitor or Surveyor. References to the Tenure of a Property are based on information supplied by the Seller. The Agent has not had sight of the title documents. A Buyer is advised to obtain verification from their Solicitor. You are advised to check the availability of this property before travelling any distance to view. Every effort and precaution has been made to ensure these particulars are correct and not misleading but their accuracy is not guaranteed nor do they form part of any contract. If there is any point which is of particular importance to you, please contact us and we will provide any information you require. This is advisable, particularly if you intend to travel some distance to view the property. The mention of any appliances and services within these details does not imply that they are in full and efficient working order. These particulars are in draft form awaiting Vendors confirmation of their accuracy. These details must therefore be taken as a guide only.