

Victoria Crescent, Eccles
Manchester



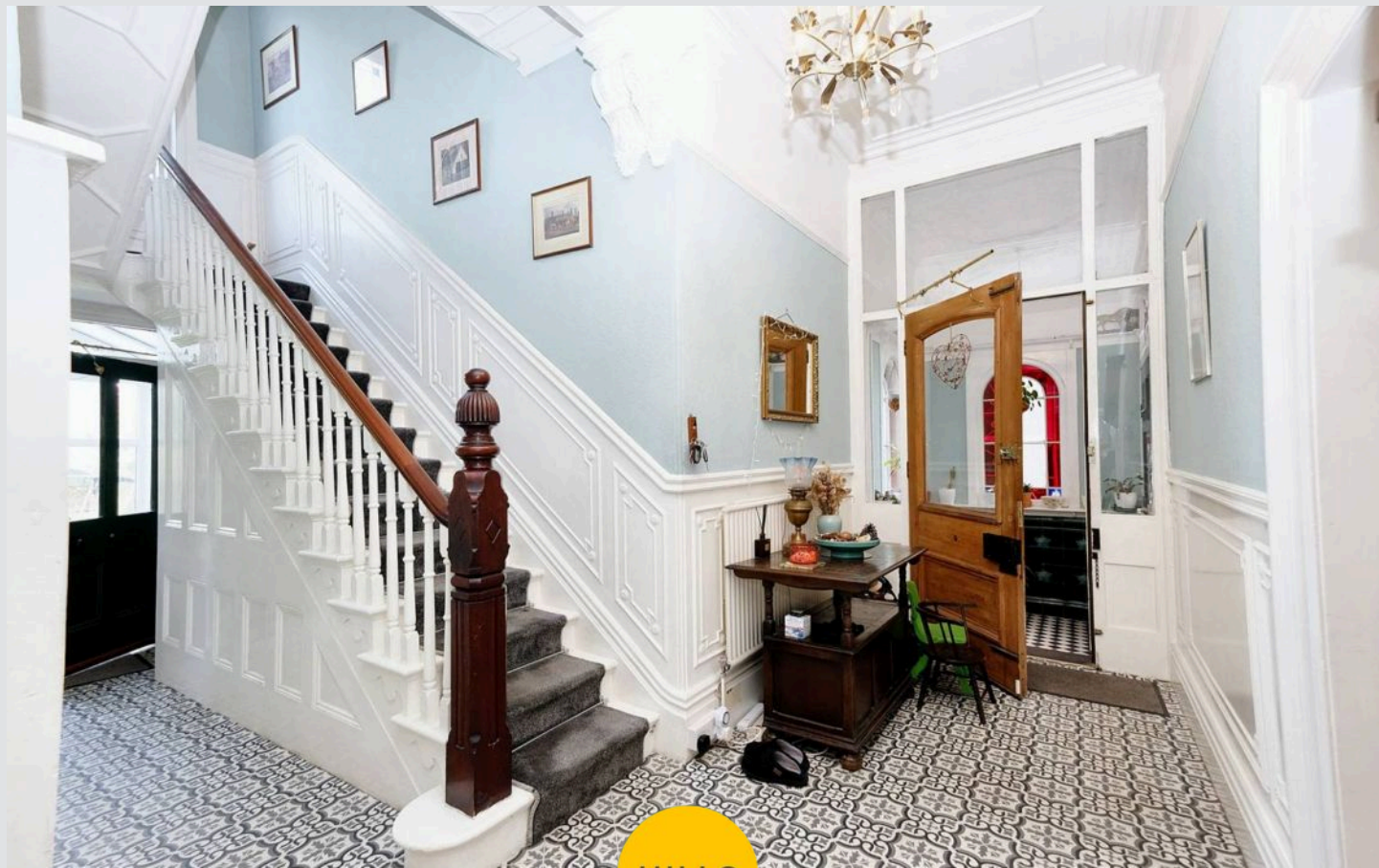
Victoria Crescent

Eccles, Manchester

Stunning 4 Bedroom Detached House with a cellar, attic room, two bathrooms and four generously sized bedrooms. Featuring a large driveway, garage and landscaped gardens to the front and rear! Council Tax band: E

Tenure: Freehold

- Beautiful period detached home laid over four floors
- Benefiting from a cellar which is currently being used as a workshop, driveway and garage!
- Modern fitted kitchen complete with Centre island and large separate utility room
- Beautiful mature private gardens, including a pond, raised decking and laid to lawn grass
- Four generously sized bedrooms
- Attic room for storage
- Two spacious reception rooms
- Beautiful family bathroom and separate shower room
- Located on the edge of Ellesmere Park with just a short walk to Monton Village
- Within walking distance of Salford Royal Hospital and within easy access of excellent transport links



Porch

7' 2" x 6' 2" (2.19m x 1.87m)

Featuring two stained glass windows, wall mounted radiator and tiled flooring.

Entrance Hallway

17' 0" x 6' 8" (5.18m x 2.04m)

Complete with a ceiling light point, wall mounted radiator and cushioned flooring.

Reception Room One

16' 5" x 12' 0" (5.01m x 3.66m)

Featuring a gas fireplace. Complete with a ceiling light point, double glazed window and wall mounted radiator. Fitted with carpet flooring.

Reception Room Two

19' 7" x 13' 8" (5.98m x 4.16m)

Featuring a coal fireplace. Complete with a ceiling light point, double glazed window and wall mounted radiator. Fitted with carpet flooring.

Kitchen

11' 8" x 14' 9" (3.55m x 4.50m)

Complete with complementary wall and base units with island. Space for a fridge and cooker. Complete with a ceiling light point, double glazed window and wall mounted radiator. Fitted with wooden flooring.

Downstairs Bathroom

8' 10" x 6' 0" (2.70m x 1.84m)

Featuring a three piece suite including bath, hand wash basin and W.C. Complete with ceiling spotlights, double glazed window and heated towel rail. Fitted with tiled flooring.

Utility Room

7' 5" x 13' 5" (2.26m x 4.08m)

Featuring base units and sink with space for a washing machine and dishwasher. Complete with ceiling light point and tiled flooring.



HILLS

Cellar

15' 5" x 12' 6" (4.71m x 3.80m)

Complete with a ceiling light point. Chamber One - 4.71m x 3.8m Chamber Two - 3.98m x 4.26m Chamber Three - 2.92m x 1.83m Chamber Four - 2.53m x 1.86m

Bedroom One

19' 6" x 13' 9" (5.95m x 4.18m)

Fitted with a gas fire. Complete with a ceiling light point, double glazed window and wall mounted radiator. Fitted with carpet flooring.

Bedroom Two

15' 0" x 12' 5" (4.58m x 3.78m)

Complete with a ceiling light point, double glazed window and wall mounted radiator. Fitted with carpet flooring.

Bedroom Three

12' 10" x 14' 8" (3.91m x 4.46m)

Complete with a ceiling light point, double glazed window and wall mounted radiator. Fitted with carpet flooring.

Bedroom Four

6' 11" x 13' 2" (2.11m x 4.02m)

Complete with a ceiling light point, double glazed window and wall mounted radiator. Fitted with carpet flooring.

Bathroom

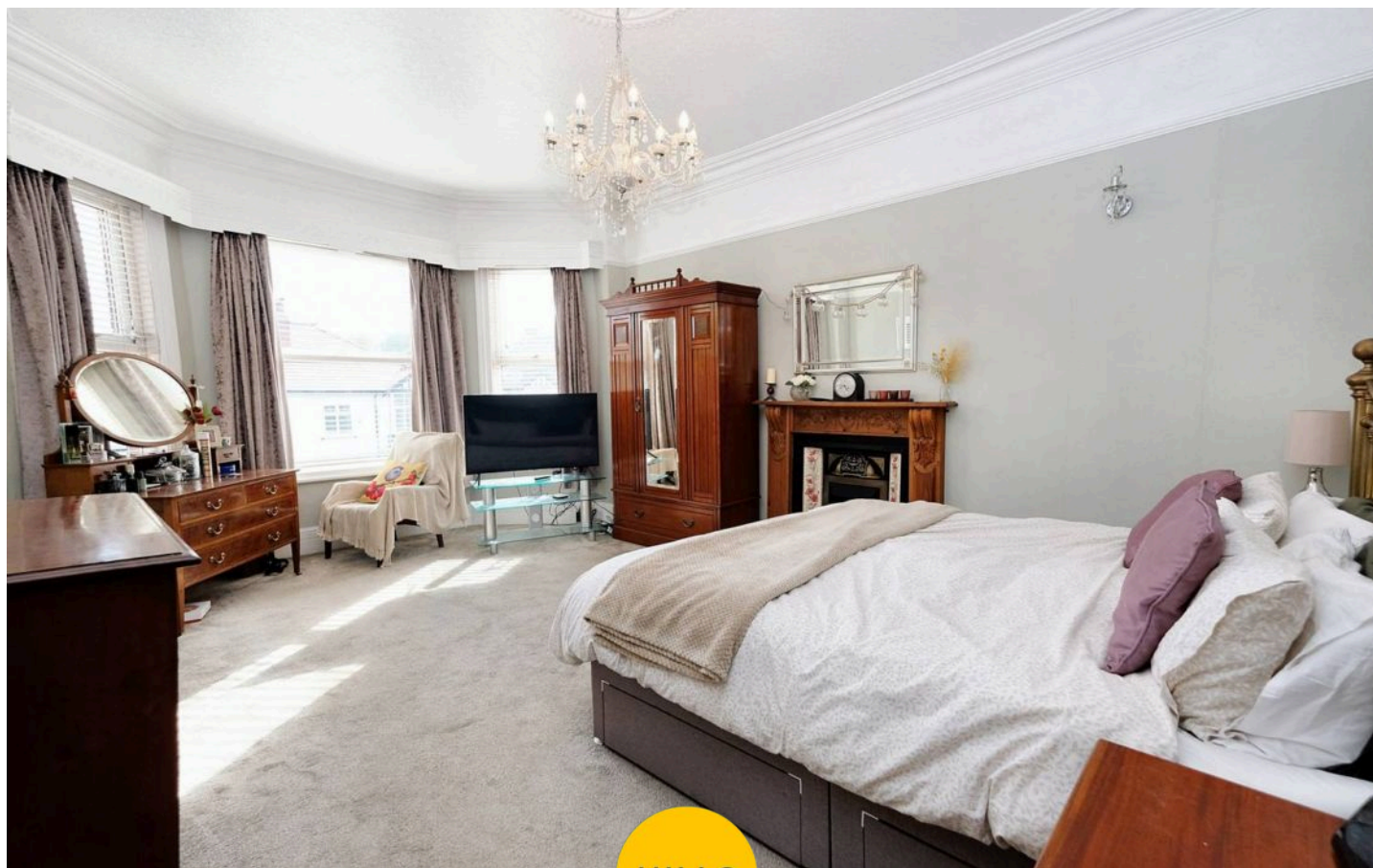
8' 6" x 6' 3" (2.59m x 1.91m)

Featuring a three piece suite including a shower, hand wash basin and W.C. Complete with a ceiling light point, double glazed window and heated towel rail. Fitted with tiled flooring.

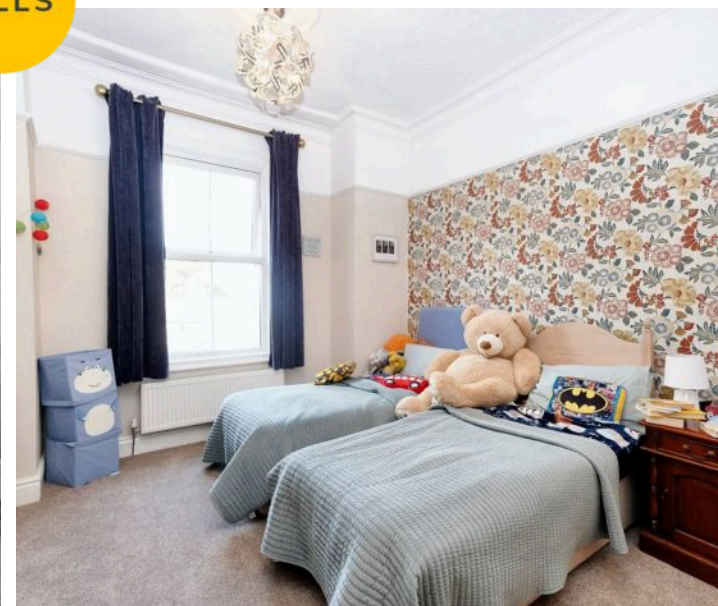
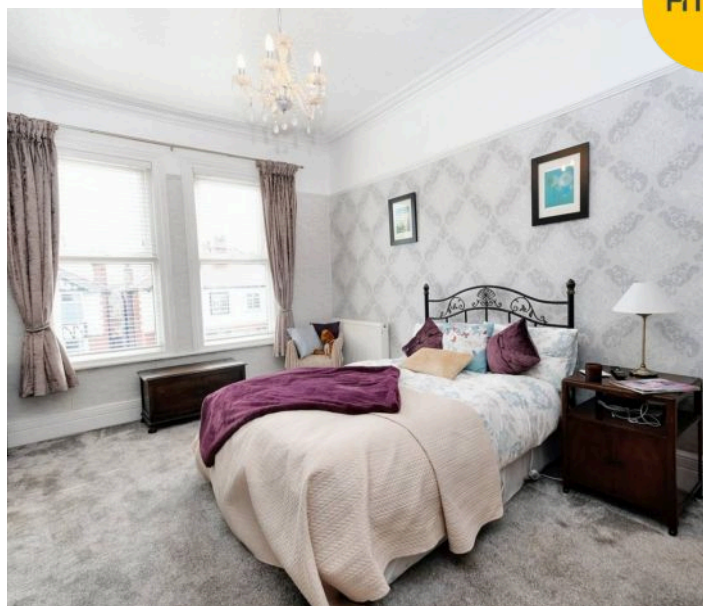
Loft Room

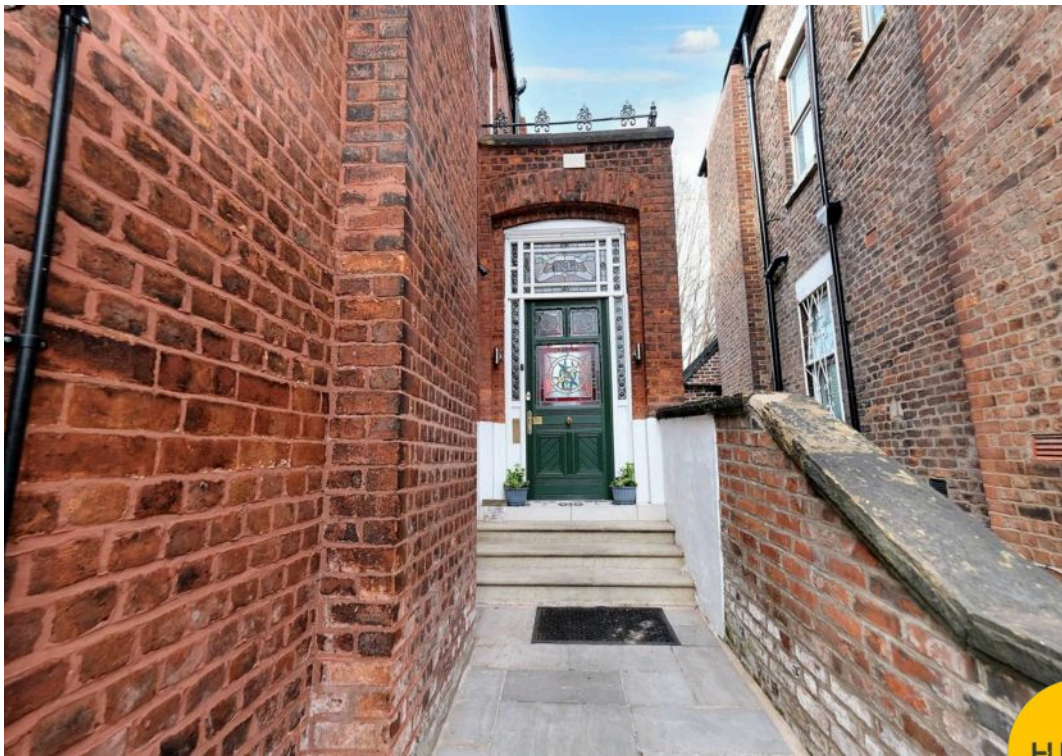
13' 2" x 22' 8" (4.01m x 6.92m)

Complete with a ceiling light point and two Velux windows to the front and rear.

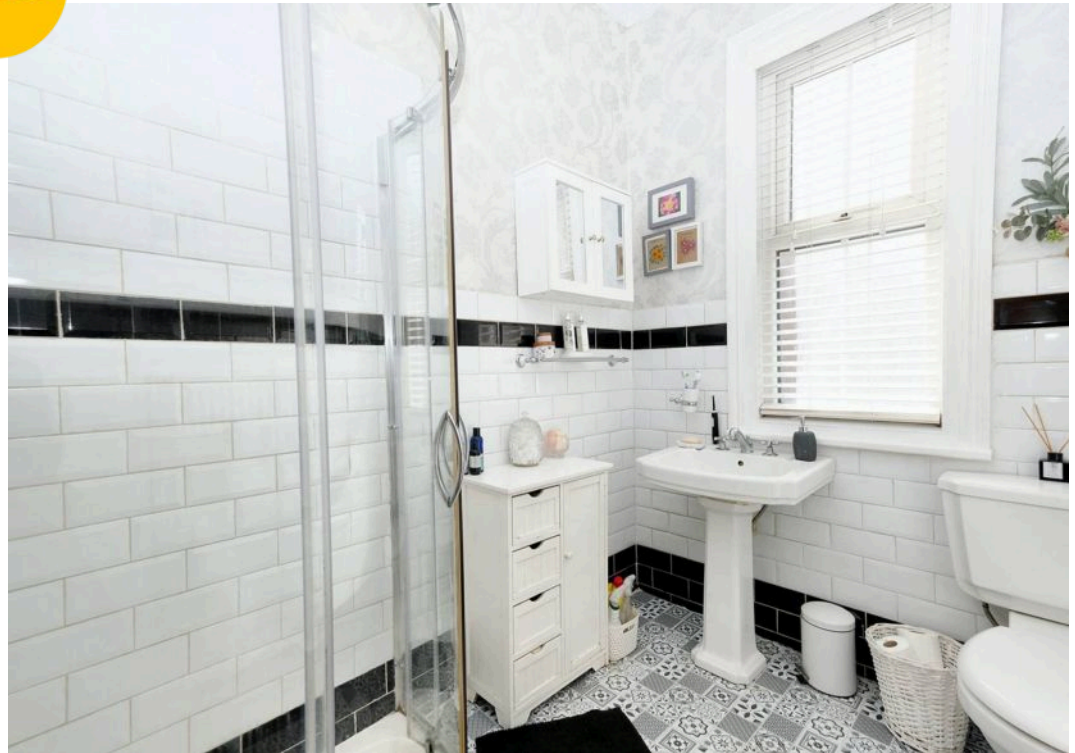


HILLS





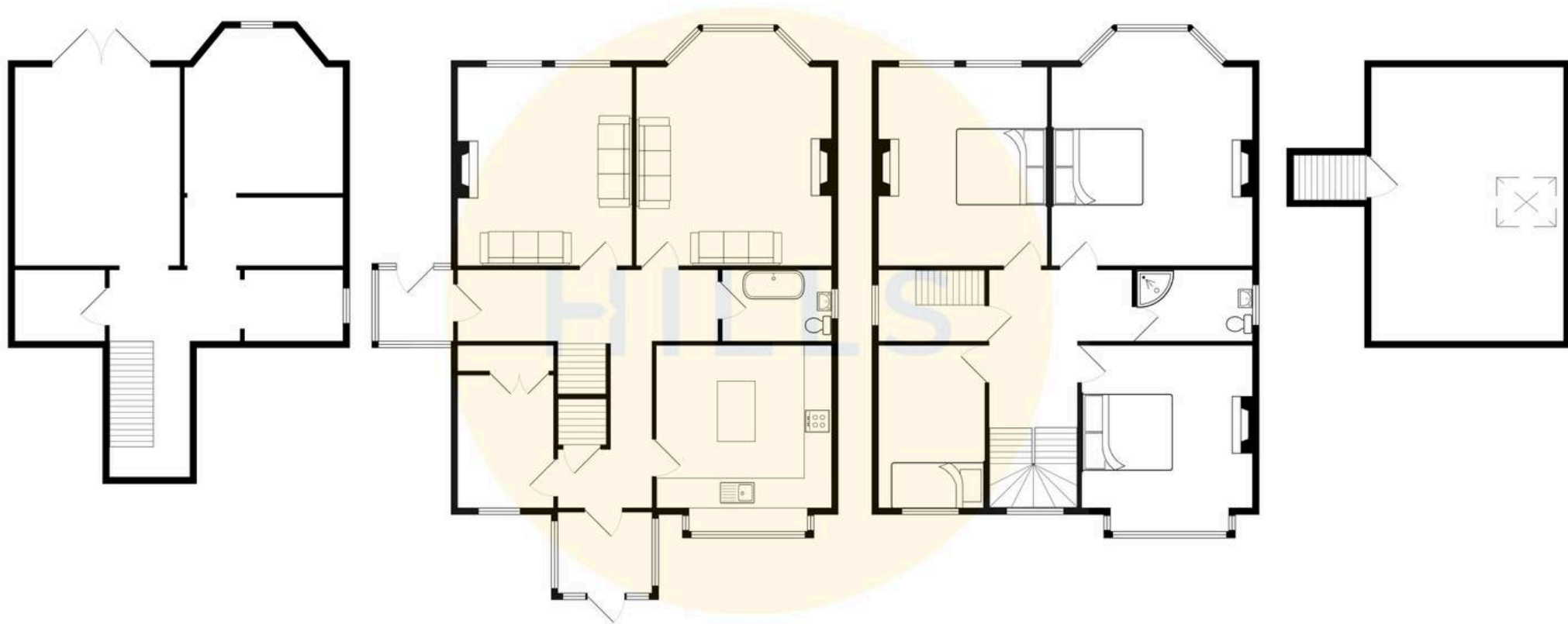
HILLS





HILLS







Hills | Salfords Estate Agent

Hills Residential, Sentinel House Albert Street – M30 0SS

0161 707 4900

sales@hills.agency

www.hills.agency/



THE PROPERTY MISDESCRIPTIONS ACT 1991 The Agent has not tested any apparatus, equipment, fixtures and fittings or services and so cannot verify that they are in working order or fit for the purpose. A Buyer is advised to obtain verification from their Solicitor or Surveyor. References to the Tenure of a Property are based on information supplied by the Seller. The Agent has not had sight of the title documents. A Buyer is advised to obtain verification from their Solicitor. You are advised to check the availability of this property before travelling any distance to view. Every effort and precaution has been made to ensure these particulars are correct and not misleading but their accuracy is not guaranteed nor do they form part of any contract. If there is any point which is of particular importance to you, please contact us and we will provide any information you require. This is advisable, particularly if you intend to travel some distance to view the property. The mention of any appliances and services within these details does not imply that they are in full and efficient working order. These particulars are in draft form awaiting Vendors confirmation of their accuracy. These details must therefore be taken as a guide only.