

Trevelyan Street, Eccles

Manchester



In Excess of £120,000

Trevelyan Street

Eccles, Manchester

Conveniently located ground floor flat with open plan living area, two double bedrooms, fitted kitchen & ample storage. Natural light, double glazed, near amenities & transport links. Ideal for first-time buyers or downsizers. Ready to move in with no chain. Schedule a viewing today!

Council Tax band: A

Tenure: Leasehold

- Spacious, Ground Floor Flat
- Open Plan Lounge and Dining Space
- Two Double Bedrooms, Master with Fitted Wardrobes
- Fitted Kitchen
- Bathroom and Separate W.C.
- Fully Double Glazed and Electric Throughout
- Low Ground Rent & Service Charge
- Surrounded by Excellent Amenities & Transport Links
- Offered to the Market with No Onward Chain
- Perfect First Time Buy or Downsize



HILLS



Lounge

16' 4" x 12' 0" (4.98m x 3.66m)

Kitchen

10' 3" x 9' 3" (3.12m x 2.82m)

Bedroom One

12' 1" x 12' 0" (3.68m x 3.66m)

Bedroom Two

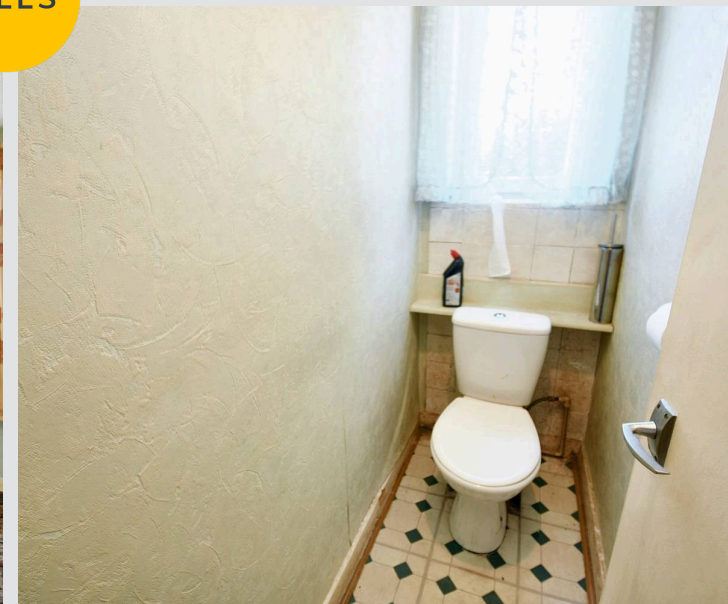
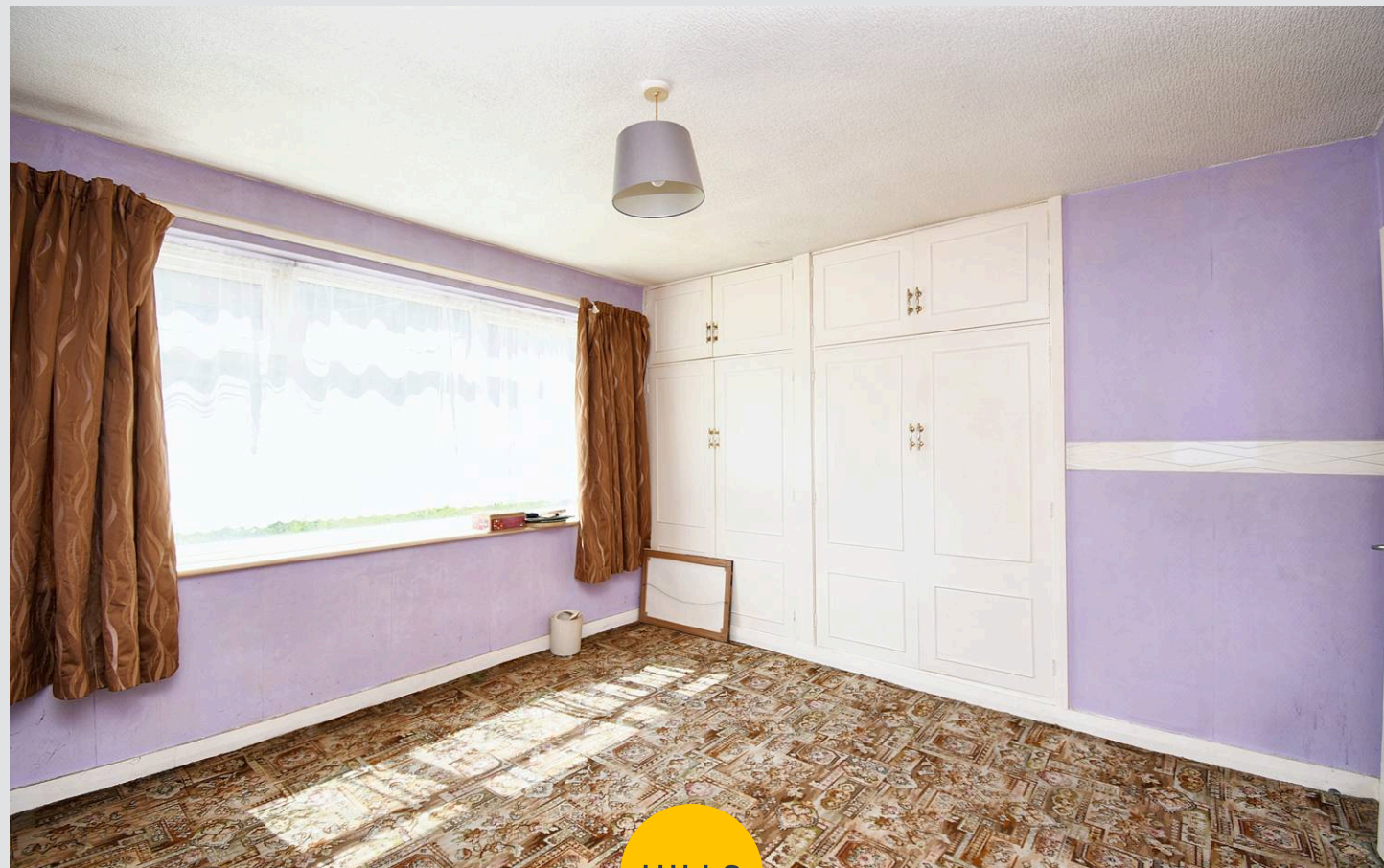
12' 7" x 9' 8" (3.84m x 2.95m)

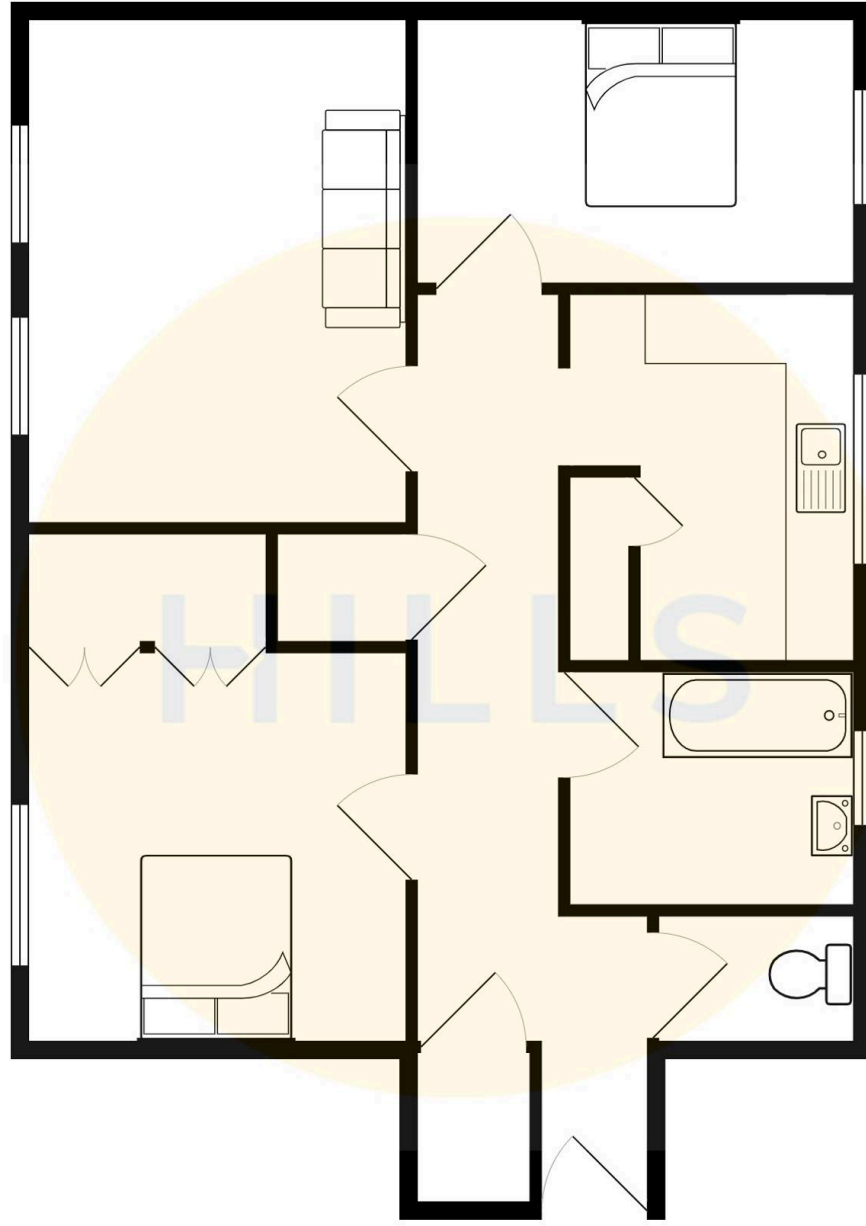
Bathroom

9' 2" x 4' 9" (2.79m x 1.45m)

W.C.

6' 3" x 2' 6" (1.91m x 0.76m)







Hills | Salfords Estate Agent

Hills Residential, Sentinel House Albert Street – M30 0SS

0161 707 4900

sales@hills.agency

www.hills.agency/



THE PROPERTY MISDESCRIPTIONS ACT 1991 The Agent has not tested any apparatus, equipment, fixtures and fittings or services and so cannot verify that they are in working order or fit for the purpose. A Buyer is advised to obtain verification from their Solicitor or Surveyor. References to the Tenure of a Property are based on information supplied by the Seller. The Agent has not had sight of the title documents. A Buyer is advised to obtain verification from their Solicitor. You are advised to check the availability of this property before travelling any distance to view. Every effort and precaution has been made to ensure these particulars are correct and not misleading but their accuracy is not guaranteed nor do they form part of any contract. If there is any point which is of particular importance to you, please contact us and we will provide any information you require. This is advisable, particularly if you intend to travel some distance to view the property. The mention of any appliances and services within these details does not imply that they are in full and efficient working order. These particulars are in draft form awaiting Vendors confirmation of their accuracy. These details must therefore be taken as a guide only.