

Trafford Road, Eccles

Manchester

HILLS

In the region of £220,000



# Trafford Road

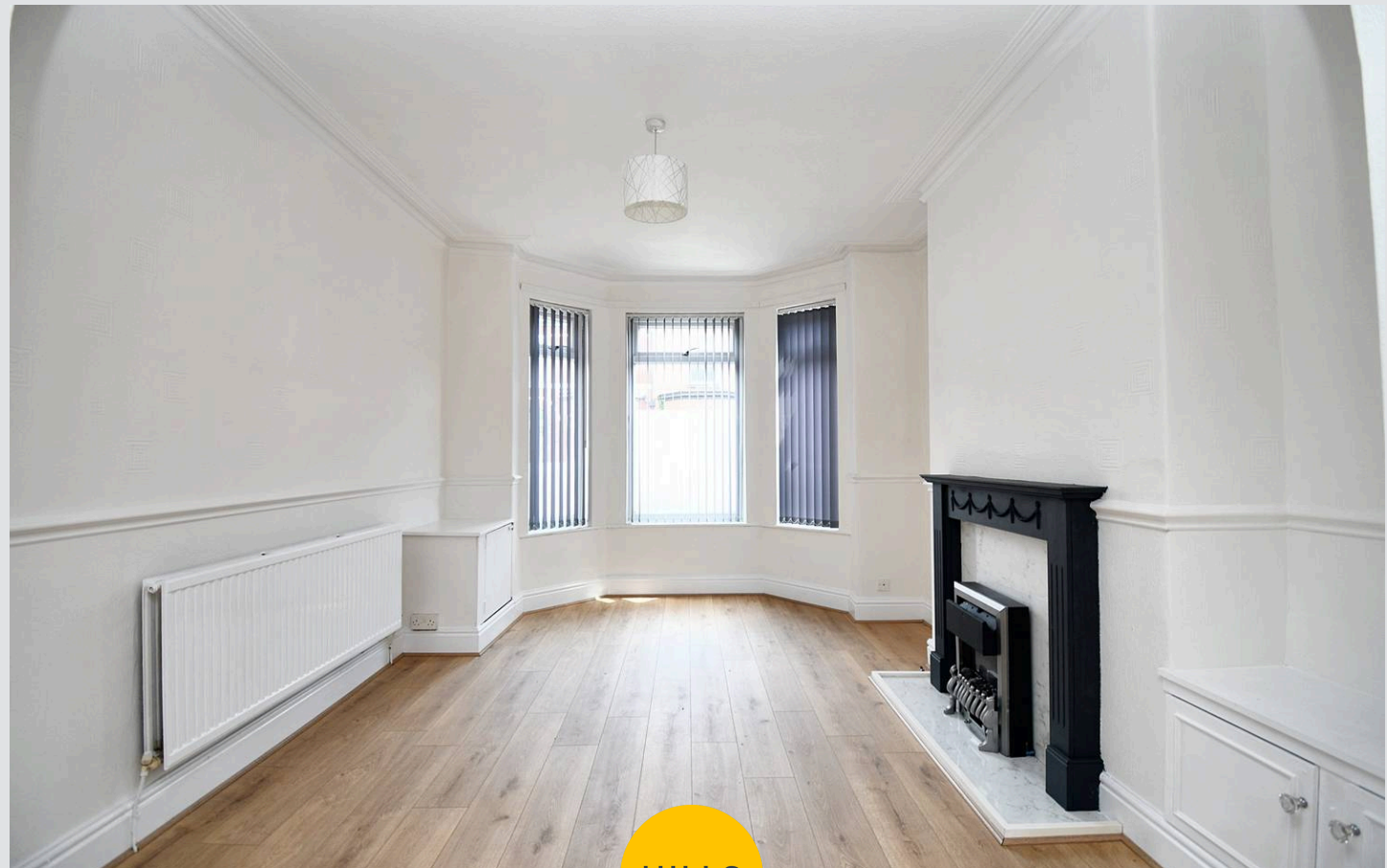
Eccles, Manchester

Fabulous three bed terrace house with new flooring and fresh decoration throughout. Open plan lounge, fitted kitchen, three bedrooms, and garden. Ideal for first-time buyers or families. Close to schools, shops, and parks with good transport links.

Council Tax band: B

Tenure: Leasehold

- Offered with No Onward Chain
- Open Plan Bay Fronted Lounge & Dining Space
- Fitted Kitchen & Dining Room
- Three Generous Bedrooms
- Three Piece Bathroom Suite
- Original York Stone Paving in the Rear Yard
- Excellently Located Close to Schools, Shops and Parks
- Well Served by Public Transport and Motorway Links
- Perfect First Time Buy or Family Home





### Entrance Hallway

### Lounge

12' 6" x 11' 5" (3.81m x 3.48m)

### Dining Room

13' 6" x 11' 9" (4.11m x 3.58m)

### Kitchen

14' 8" x 8' 3" (4.47m x 2.51m)

### Landing

### Bedroom One

15' 2" x 12' 0" (4.62m x 3.66m)

### Bedroom Two

12' 4" x 9' 7" (3.76m x 2.92m)

### Bedroom Three

9' 2" x 7' 8" (2.79m x 2.34m)

### Bathroom

8' 1" x 4' 9" (2.46m x 1.45m)



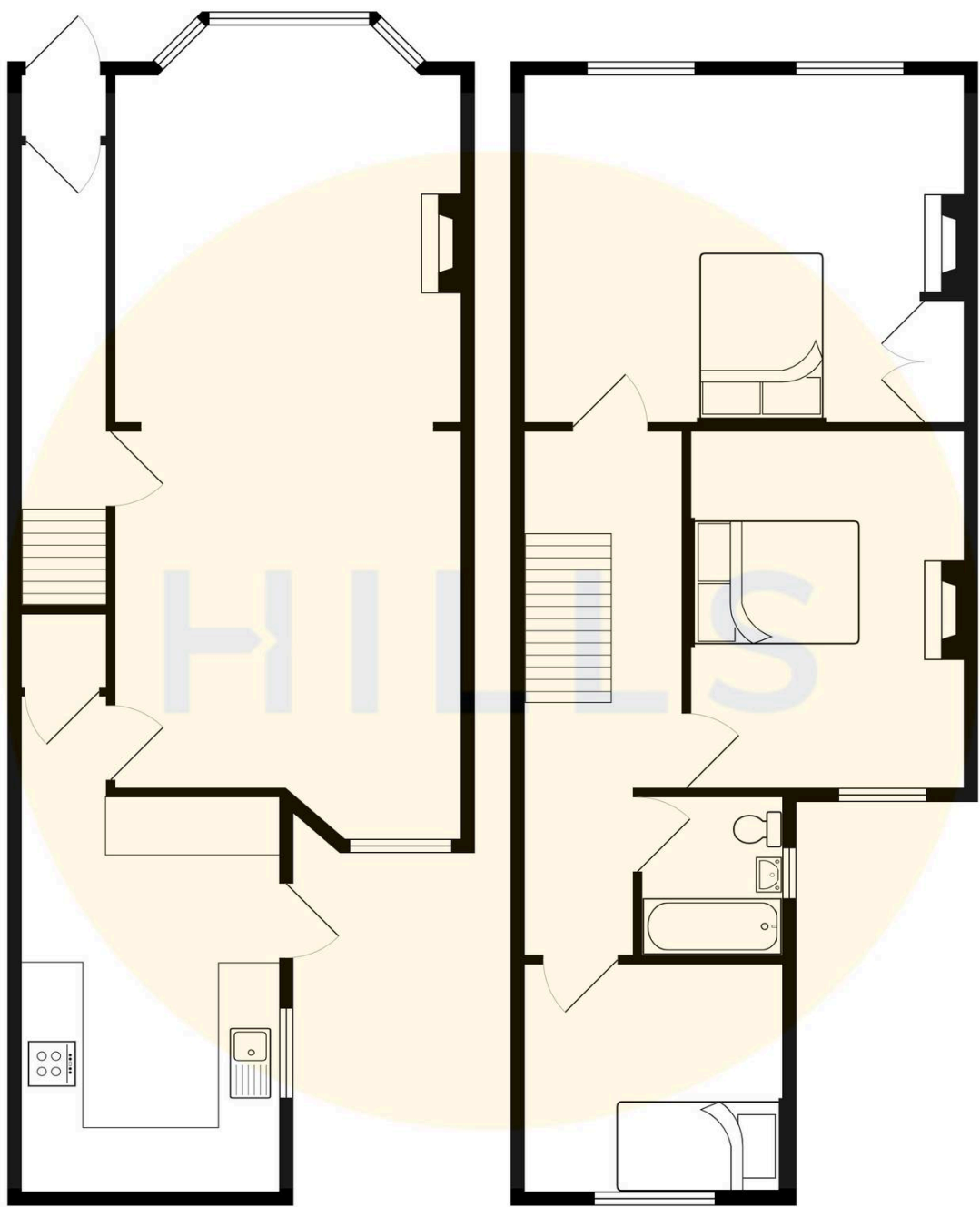




HILLS











## Hills | Salfords Estate Agent

Hills Residential, Sentinel House Albert Street – M30 0SS

0161 707 4900

[sales@hills.agency](mailto:sales@hills.agency)

[www.hills.agency/](http://www.hills.agency/)



THE PROPERTY MISDESCRIPTIONS ACT 1991 The Agent has not tested any apparatus, equipment, fixtures and fittings or services and so cannot verify that they are in working order or fit for the purpose. A Buyer is advised to obtain verification from their Solicitor or Surveyor. References to the Tenure of a Property are based on information supplied by the Seller. The Agent has not had sight of the title documents. A Buyer is advised to obtain verification from their Solicitor. You are advised to check the availability of this property before travelling any distance to view. Every effort and precaution has been made to ensure these particulars are correct and not misleading but their accuracy is not guaranteed nor do they form part of any contract. If there is any point which is of particular importance to you, please contact us and we will provide any information you require. This is advisable, particularly if you intend to travel some distance to view the property. The mention of any appliances and services within these details does not imply that they are in full and efficient working order. These particulars are in draft form awaiting Vendors confirmation of their accuracy. These details must therefore be taken as a guide only.