



Montonmill Gardens, Eccles

Manchester



In Excess of £140,000

Montonmill Gardens

Eccles, Manchester

Take a look at this FANTASTIC ONE BEDROOM GROUND FLOOR APARTMENT WITHIN WALKING DISTANCE TO MONTON VILLAGE! This property overlooks the Bridgewater Canal and comes with allocated parking.

Council Tax band: A

Tenure: Leasehold

- Spacious one bedroom ground floor apartment within walking distance to Monton Village
- Secure communal entrance
- Modern three piece bathroom suited and fitted kitchen
- Open plan kitchen and living area
- Well presented throughout
- Ideally situated close to excellent transport links and amenities
- Allocated parking with ample visitor spaces
- Overlooks Bridgewater canal
- Fantastic first time buy!
- Excellently located close to local amenities and transport links



HILLS

Hallway

8' 6" x 8' 2" (2.58m x 2.49m)

Complete with a ceiling light point, intercom, storage cupboard and laminate flooring.

Kitchen

9' 2" x 8' 9" (2.80m x 2.66m)

Fitted with a range of wall and base units with integral stainless steel sink. Integrated four ring electric hob and oven. Space for a fridge/freezer. Complete with a ceiling light point and laminate flooring.

Lounge

11' 7" x 13' 5" (3.52m x 4.09m)

Complete with a ceiling light point, two double glazed windows and electric radiator. Fitted with laminate flooring.

Bedroom One

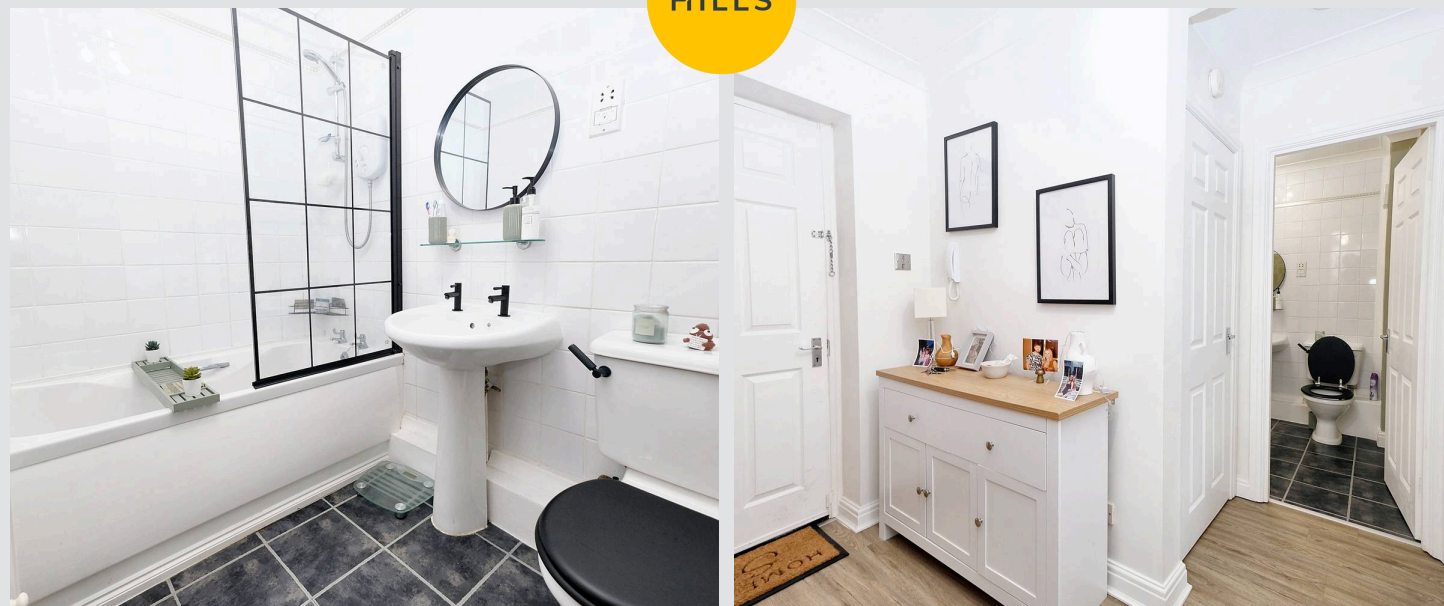
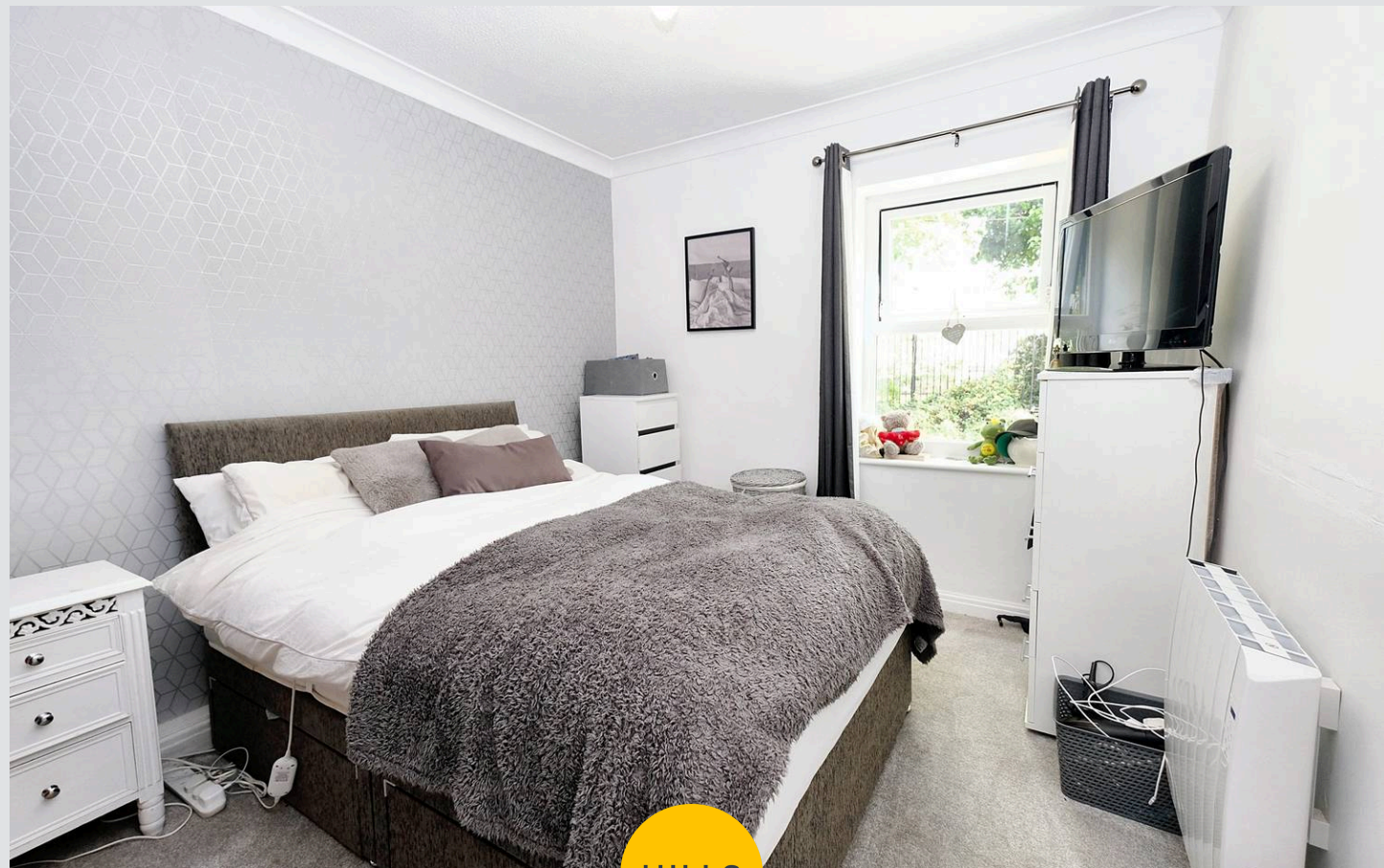
13' 1" x 9' 2" (3.99m x 2.79m)

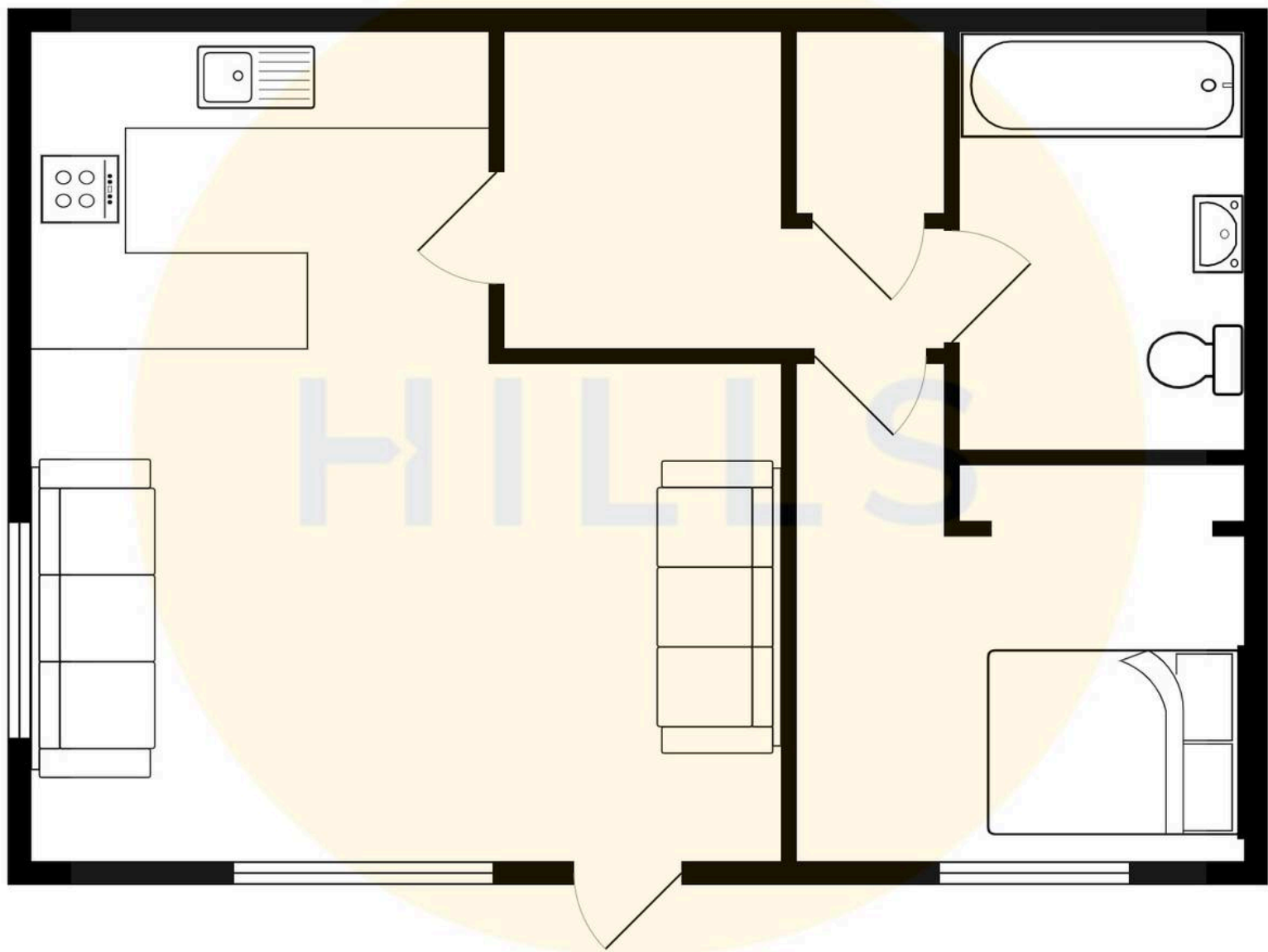
Complete with a ceiling light point, double glazed window and electric radiator. Fitted with carpet flooring.

Bathroom

6' 2" x 7' 9" (1.88m x 2.37m)

Fitted with a three piece suite including a bath with shower over, hand wash basin and W.C. Complete with a ceiling light point, extractor and tiled flooring.







Hills | Salfords Estate Agent

Hills Residential, Sentinel House Albert Street – M30 0SS

0161 707 4900

sales@hills.agency

www.hills.agency/



THE PROPERTY MISDESCRIPTIONS ACT 1991 The Agent has not tested any apparatus, equipment, fixtures and fittings or services and so cannot verify that they are in working order or fit for the purpose. A Buyer is advised to obtain verification from their Solicitor or Surveyor. References to the Tenure of a Property are based on information supplied by the Seller. The Agent has not had sight of the title documents. A Buyer is advised to obtain verification from their Solicitor. You are advised to check the availability of this property before travelling any distance to view. Every effort and precaution has been made to ensure these particulars are correct and not misleading but their accuracy is not guaranteed nor do they form part of any contract. If there is any point which is of particular importance to you, please contact us and we will provide any information you require. This is advisable, particularly if you intend to travel some distance to view the property. The mention of any appliances and services within these details does not imply that they are in full and efficient working order. These particulars are in draft form awaiting Vendors confirmation of their accuracy. These details must therefore be taken as a guide only.