

Hiley Road, Eccles

Manchester



In Excess of £190,000



# Hiley Road

Eccles, Manchester

Fantastic THREE BEDROOM TERRACED PROPERTY COMING TO THE MARKET CHAIN FREE! Featuring a spacious living area, modern fitted kitchen and bathroom and three generous bedrooms! Council Tax band: A

Tenure: Freehold

- Three bedroom terraced property coming to the market chain free!
- Modern fitted kitchen
- Spacious living and dining area
- Three generous bedrooms
- Three piece bathroom suite
- Off road parking to the front
- Large well kept garden to the rear
- Freehold title and no onward chain
- Ideal for both families and first time buyers alike
- Excellently located close to local amenities and transport links



HILLS



**Entrance Hallway**

6' 5" x 11' 5" (1.96m x 3.48m)

Entered via a uPVC front door. Complete with a ceiling light point, double glazed window, gas fireplace and wall mounted radiator. Fitted with laminate flooring.

**Lounge**

22' 4" x 11' 8" (6.81m x 3.56m)

Complete with a ceiling light point, double glazed window, gas fireplace and wall mounted radiator. Fitted with laminate flooring.

**Kitchen**

7' 10" x 10' 10" (2.40m x 3.31m)

Featuring complementary wall and base units with cooker. Space for a washing machine and fridge freezer. Complete with a ceiling light point, double glazed window and wall mounted radiator. Fitted with uPVC door and lino flooring.

**Bedroom One**

15' 9" x 11' 5" (4.81m x 3.48m)

Complete with a ceiling light point, double glazed window and wall mounted radiator. Fitted with carpet flooring. Boiler.

**Bedroom Two**

15' 7" x 10' 4" (4.74m x 3.14m)

Complete with a ceiling light point, double glazed window and wall mounted radiator. Fitted with carpet flooring.

**Bedroom Three**

7' 2" x 9' 9" (2.18m x 2.97m)

Complete with a ceiling light point, double glazed window and wall mounted radiator. Fitted with carpet flooring.

**Bathroom**

6' 9" x 7' 9" (2.05m x 2.37m)

Featuring a three piece suite including a bath with shower over, hand wash basin and W.C. Complete with a ceiling light point, double glazed window and heated towel rail. Fitted with laminate flooring.



HILLS

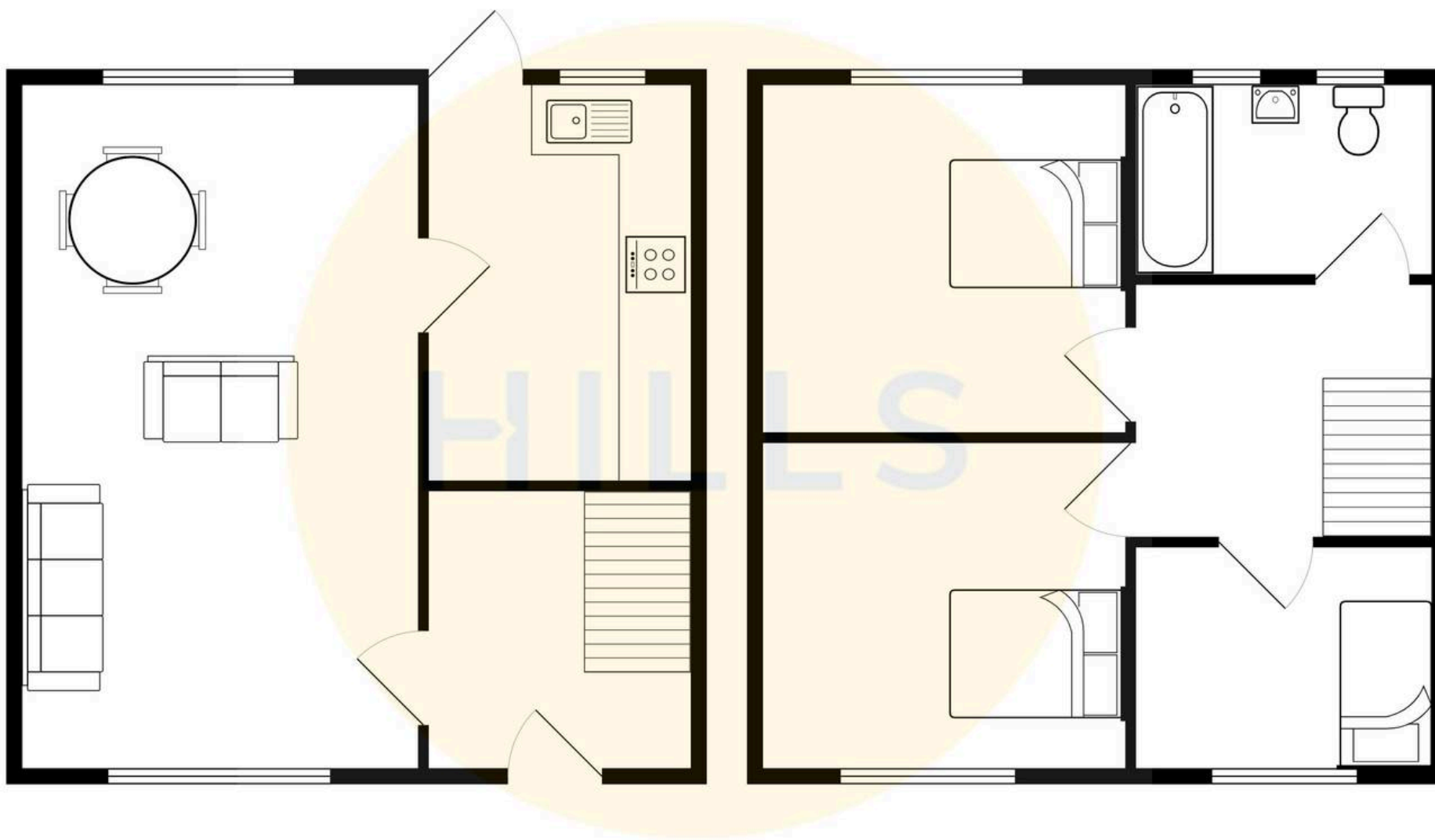






HILLS









## Hills | Salfords Estate Agent

Hills Residential, Sentinel House Albert Street – M30 0SS

0161 707 4900

[sales@hills.agency](mailto:sales@hills.agency)

[www.hills.agency/](http://www.hills.agency/)



THE PROPERTY MISDESCRIPTIONS ACT 1991 The Agent has not tested any apparatus, equipment, fixtures and fittings or services and so cannot verify that they are in working order or fit for the purpose. A Buyer is advised to obtain verification from their Solicitor or Surveyor. References to the Tenure of a Property are based on information supplied by the Seller. The Agent has not had sight of the title documents. A Buyer is advised to obtain verification from their Solicitor. You are advised to check the availability of this property before travelling any distance to view. Every effort and precaution has been made to ensure these particulars are correct and not misleading but their accuracy is not guaranteed nor do they form part of any contract. If there is any point which is of particular importance to you, please contact us and we will provide any information you require. This is advisable, particularly if you intend to travel some distance to view the property. The mention of any appliances and services within these details does not imply that they are in full and efficient working order. These particulars are in draft form awaiting Vendors confirmation of their accuracy. These details must therefore be taken as a guide only.