



Beaufort Street, Eccles
Manchester



£230,000

Beaufort Street

Eccles, Manchester

Within Walking Distance of Monton Village and Boasting Peaceful Views Over the Church Grounds at the Front is this Three Bedroom, Bay-Fronted Terraced Property!

Council Tax band: A

- Bay-Fronted, Three Bedroom Terraced Property
- Benefits from a Peaceful Outlook to the Front Over Church Grounds
- Within Walking Distance of Monton Village, with its Fine Array of Bars, Shops and Restaurants
- Bay-Fronted Lounge
- Kitchen Diner with Modern Fitted Units
- Three Well-Proportioned Bedrooms
- Modern Three-Piece Bathroom
- Mature Garden to the Front and a Low-Maintenance Garden to the Rear
- Ideal First Time Home or Investment
- Viewing is Highly Recommended!



Reception Room

12' 8" x 11' 0" (3.87m x 3.35m)

Kitchen

17' 2" x 8' 0" (5.23m x 2.43m)

Bedroom One

10' 10" x 11' 5" (3.29m x 3.48m)

Bedroom Two

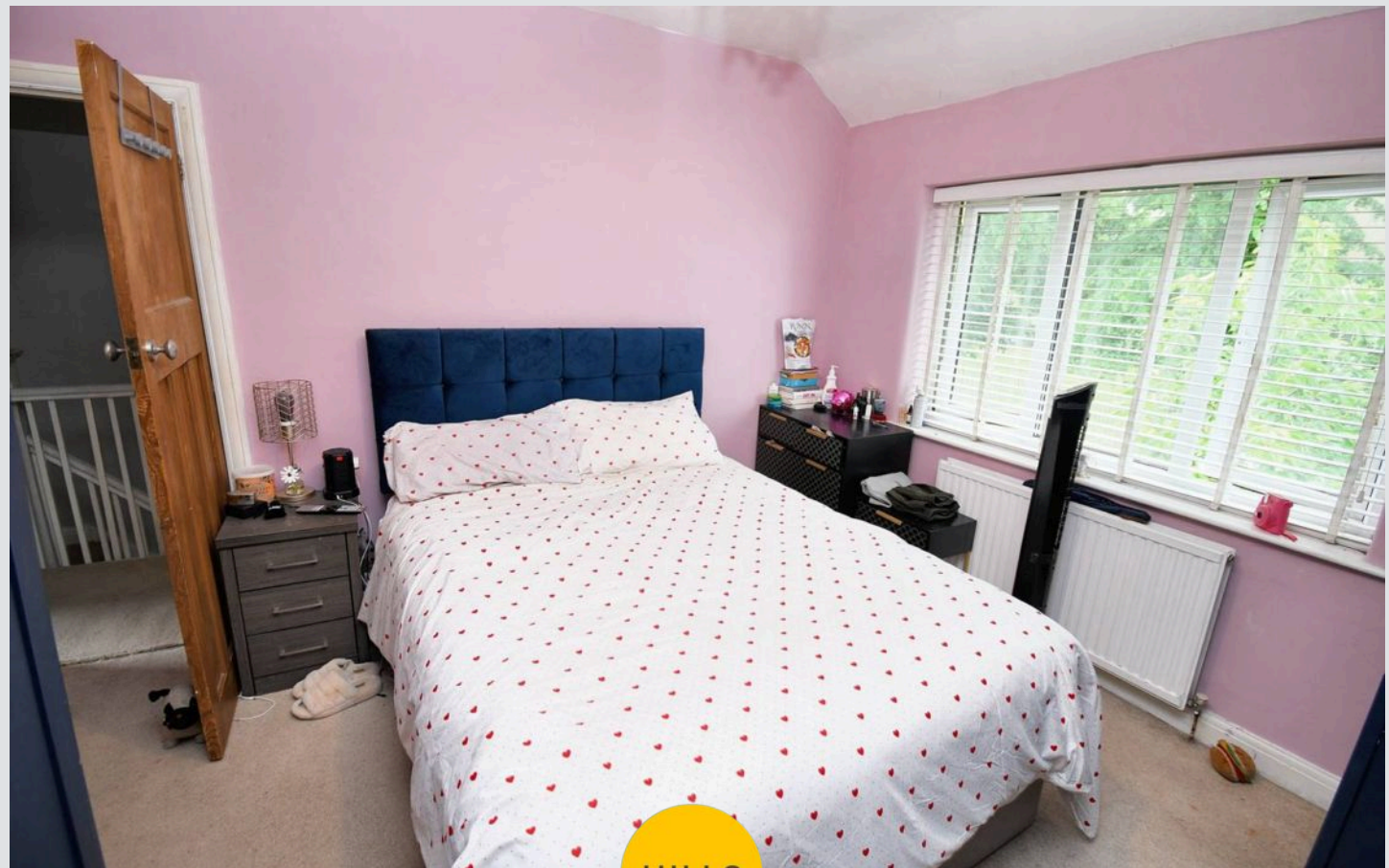
10' 5" x 8' 0" (3.17m x 2.45m)

Bedroom Three

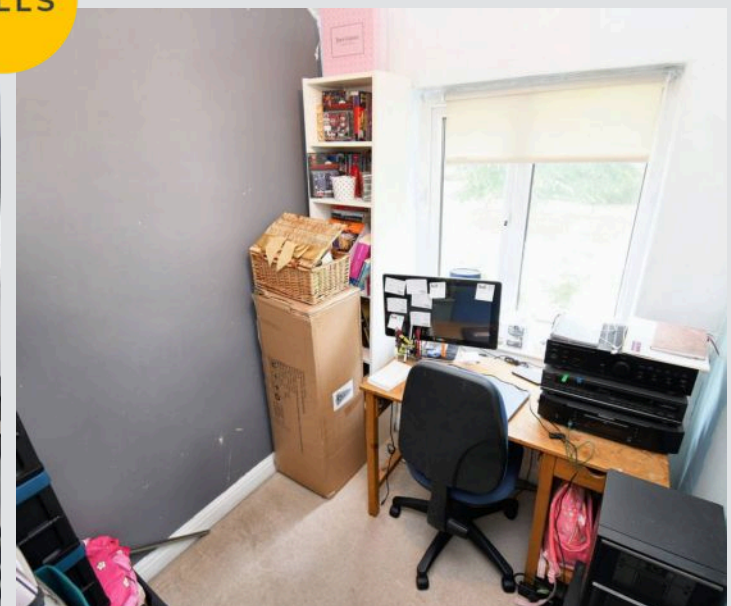
7' 3" x 6' 1" (2.20m x 1.85m)

Bathroom

5' 7" x 6' 7" (1.70m x 2.01m)

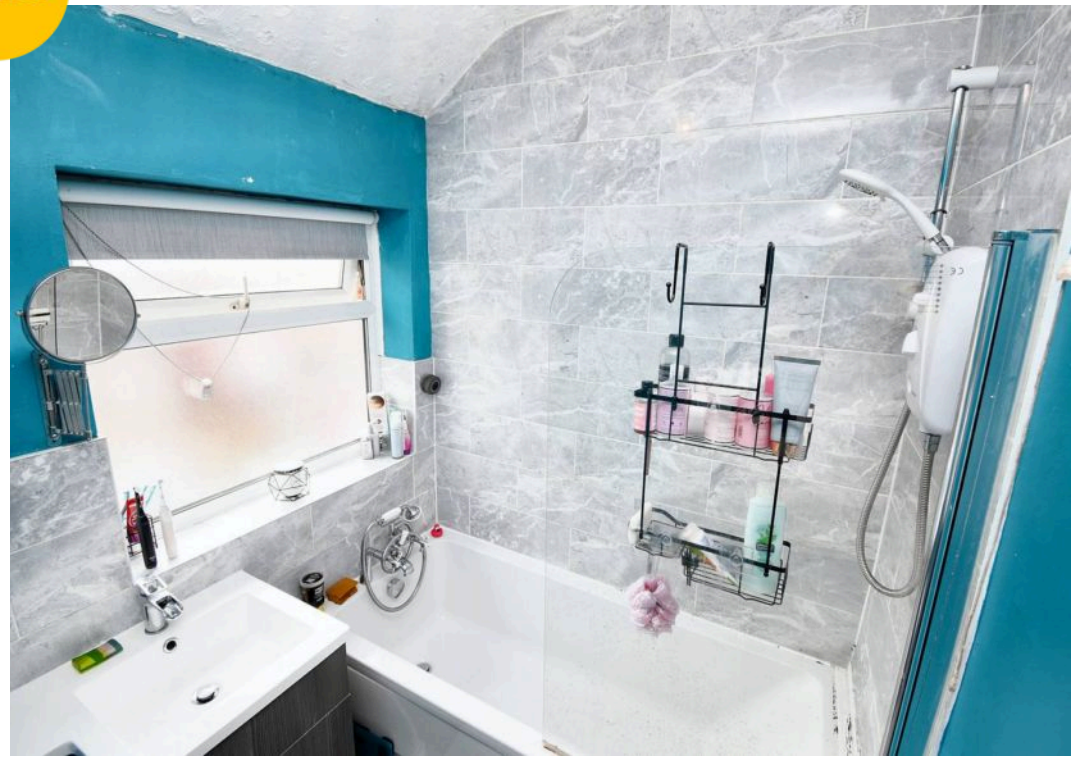


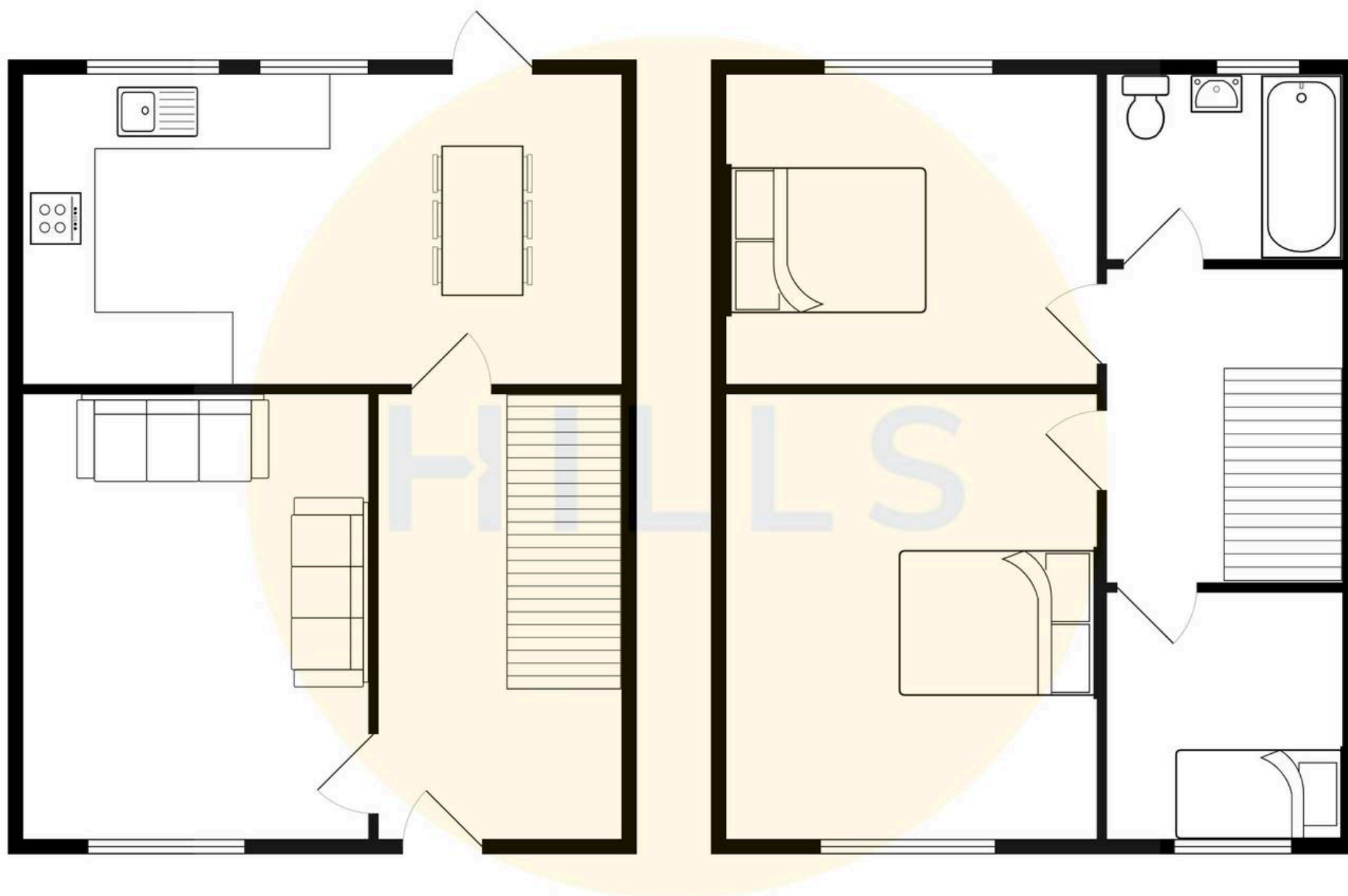
HILLS





HILLS







Hills | Salfords Estate Agent

Hills Residential, Sentinel House Albert Street – M30 0SS

0161 707 4900

sales@hills.agency

www.hills.agency/



THE PROPERTY MISDESCRIPTIONS ACT 1991 The Agent has not tested any apparatus, equipment, fixtures and fittings or services and so cannot verify that they are in working order or fit for the purpose. A Buyer is advised to obtain verification from their Solicitor or Surveyor. References to the Tenure of a Property are based on information supplied by the Seller. The Agent has not had sight of the title documents. A Buyer is advised to obtain verification from their Solicitor. You are advised to check the availability of this property before travelling any distance to view. Every effort and precaution has been made to ensure these particulars are correct and not misleading but their accuracy is not guaranteed nor do they form part of any contract. If there is any point which is of particular importance to you, please contact us and we will provide any information you require. This is advisable, particularly if you intend to travel some distance to view the property. The mention of any appliances and services within these details does not imply that they are in full and efficient working order. These particulars are in draft form awaiting Vendors confirmation of their accuracy. These details must therefore be taken as a guide only.