



Thistledown Close, Eccles

Manchester





# Thistledown Close

Eccles, Manchester

Ground floor two bed apartment in well-maintained development with communal gardens. Ideal for first-time buyers or downsizers, no chain. Spacious open plan lounge/dining, modern kitchen, ample storage, allocated parking. Convenient access to public transport, local amenities, and motorway links.

Council Tax band: B

Tenure: Leasehold

- Two Bedroom Ground Floor Apartment Offered with No Onward Chain
- Open Plan Lounge & Dining Space
- Separate Modern Fitted Kitchen
- Two Generous Double Bedrooms
- Three Piece Bathroom Suite
- Ample Storage Throughout
- Well Kept Communal Gardens & Residents Allocated Parking Space
- Located within Walking Distance to Public Transport Links, Local Amenities & Surrounded by Fantastic Motorway Links





### Entrance Hallway

Entered via a hardwood front door. Complete with a ceiling light point, double glazed window and wall mounted radiator. Fitted with laminate flooring.

### Lounge / Diner

15' 7" x 11' 9" (4.75m x 3.58m)

Featuring an electric fire. Complete with a ceiling light point, double glazed bay window and wall mounted radiator. Fitted with laminate flooring.

### Kitchen

9' 5" x 7' 6" (2.87m x 2.29m)

Featuring complementary wall and base units with integral stainless steel sink. Space for a cooker and washing machine. Complete with a ceiling light point, double glazed window, tiled walls and laminate tile flooring.

### Bedroom One

13' 6" x 8' 7" (4.11m x 2.62m)

Featuring fitted wardrobes. Complete with a ceiling light point, double glazed window and wall mounted radiator. Fitted with carpet flooring.

### Bedroom Two

8' 2" x 7' 3" (2.49m x 2.21m)

Featuring fitted wardrobes. Complete with a ceiling light point, double glazed window and wall mounted radiator. Fitted with carpet flooring.

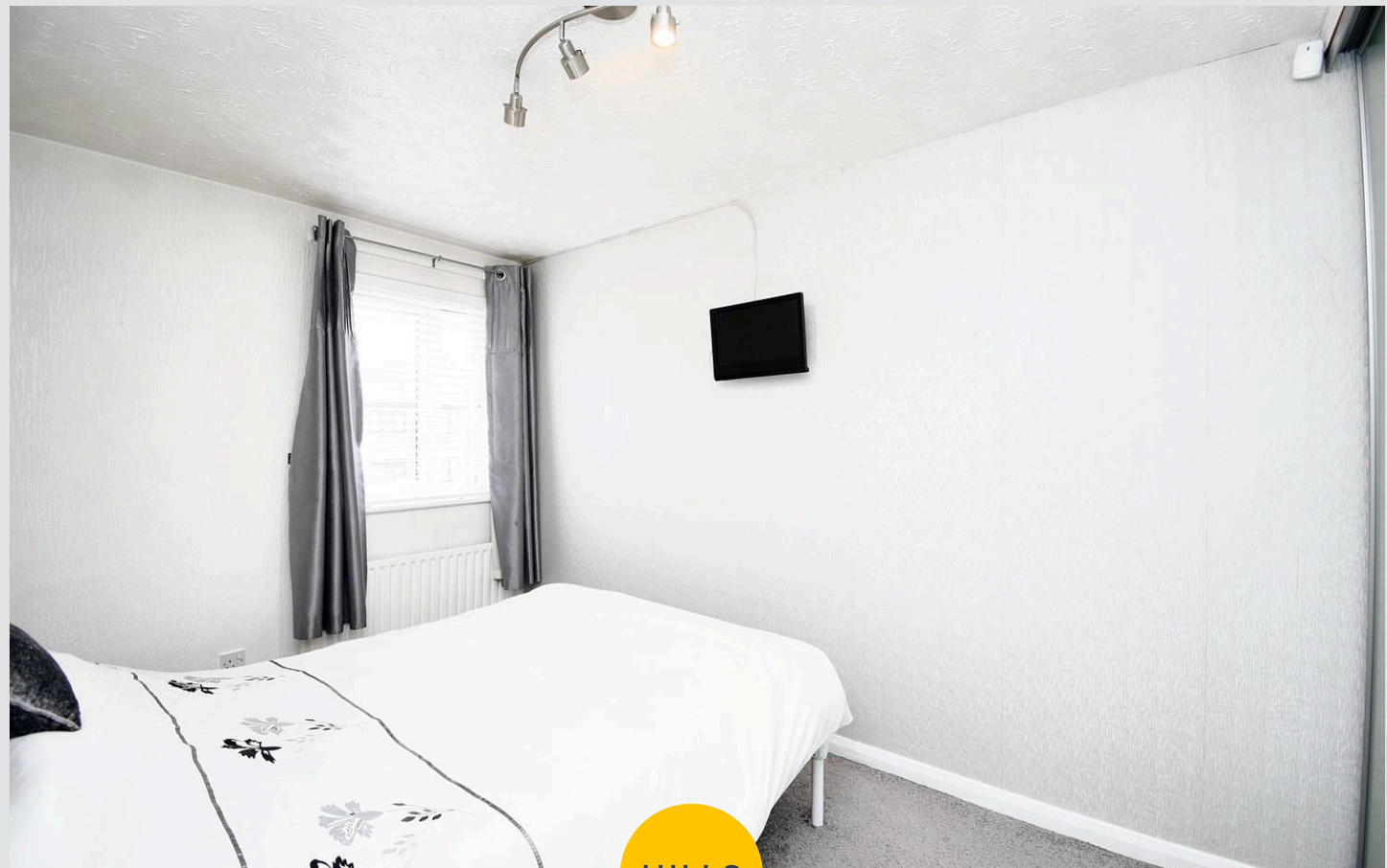
### Bathroom

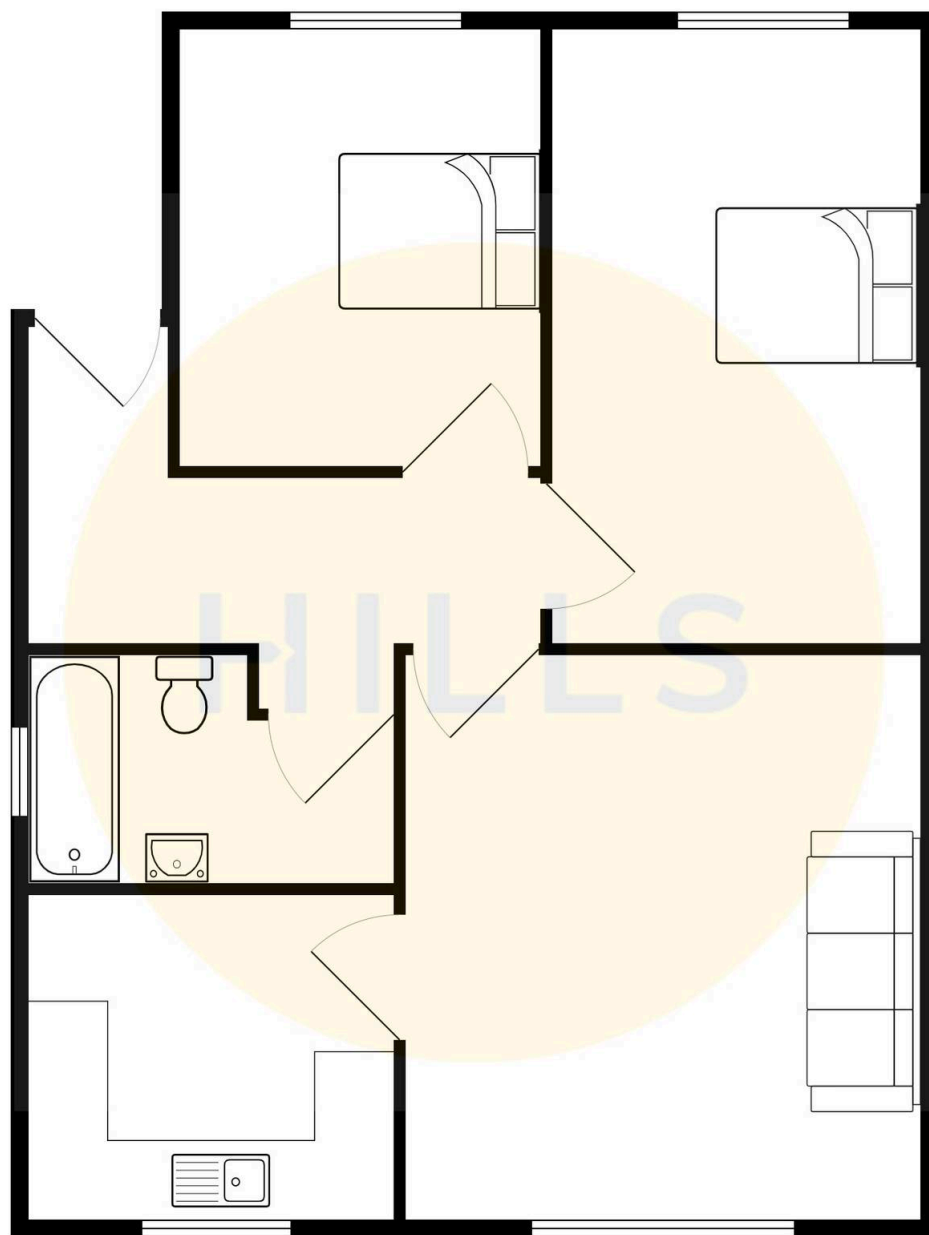
7' 7" x 5' 6" (2.31m x 1.68m)

Featuring a three piece suite including a bath with shower over, hand wash basin and W.C. Complete with ceiling spotlights, double glazed window and heated towel rail. Fitted with part tiled walls and lino flooring.

### External

Storage cupboard with power and ceiling light point. Well kept communal gardens. Allocated parking space.









## Hills | Salfords Estate Agent

Hills Residential, Sentinel House Albert Street – M30 0SS

0161 707 4900

[sales@hills.agency](mailto:sales@hills.agency)

[www.hills.agency/](http://www.hills.agency/)



THE PROPERTY MISDESCRIPTIONS ACT 1991 The Agent has not tested any apparatus, equipment, fixtures and fittings or services and so cannot verify that they are in working order or fit for the purpose. A Buyer is advised to obtain verification from their Solicitor or Surveyor. References to the Tenure of a Property are based on information supplied by the Seller. The Agent has not had sight of the title documents. A Buyer is advised to obtain verification from their Solicitor. You are advised to check the availability of this property before travelling any distance to view. Every effort and precaution has been made to ensure these particulars are correct and not misleading but their accuracy is not guaranteed nor do they form part of any contract. If there is any point which is of particular importance to you, please contact us and we will provide any information you require. This is advisable, particularly if you intend to travel some distance to view the property. The mention of any appliances and services within these details does not imply that they are in full and efficient working order. These particulars are in draft form awaiting Vendors confirmation of their accuracy. These details must therefore be taken as a guide only.