

Granville Street, Eccles

Manchester



In Excess of £350,000

Granville Street

Eccles, Manchester

Take a look at this beautifully presented three bedroom end terraced property coming to the market CHAIN FREE and located in Monton Village!
Council Tax band: B

Tenure: Leasehold

- Beautifully presented period end terraced property
- Coming to the market CHAIN FREE!
- Located in the desirable Monton Village
- Two spacious reception rooms
- Large contemporary fitted kitchen
- Three generously sized bedrooms
- Spacious and low maintenance rear garden
- Modern three piece bathroom suite
- Surrounded by a plethora of amenities and within catchment for highly sought after schooling
- Within easy access of excellent transport links into Salford Quays, Media City and Manchester City Centre



HILLS



Entrance Hallway

13' 11" x 3' 2" (4.25m x 0.96m)

Entered via a uPVC front door. Complete with ceiling spotlights, wall mounted radiator and carpet flooring.

Lounge

14' 8" x 10' 9" (4.47m x 3.27m)

Featuring a fireplace. Complete with a ceiling light point, double glazed window and wall mounted radiator. Fitted with carpet flooring.

Dining Room

14' 3" x 11' 4" (4.35m x 3.46m)

Complete with a ceiling light point, double glazed window and wall mounted radiator. Fitted with laminate flooring.

Kitchen

17' 3" x 8' 10" (5.27m x 2.68m)

Featuring complementary wall and base units with space for a fridge freezer, washing machine, dryer, hob and oven. Complete with a ceiling light point, two double glazed windows, uPVC back door and lino flooring.



HILLS



Landing

Bedroom One

11' 11" x 14' 2" (3.64m x 4.33m)

Complete with a ceiling light point, two double glazed windows and wall mounted radiator. Fitted with carpet flooring.

Bedroom Two

8' 11" x 13' 11" (2.72m x 4.23m)

Complete with a ceiling light point, two double glazed windows and wall mounted radiator. Fitted with carpet flooring.

Bedroom Three

9' 3" x 8' 8" (2.83m x 2.63m)

Complete with a ceiling light point, double glazed window and wall mounted radiator. Fitted with carpet flooring.

Bathroom

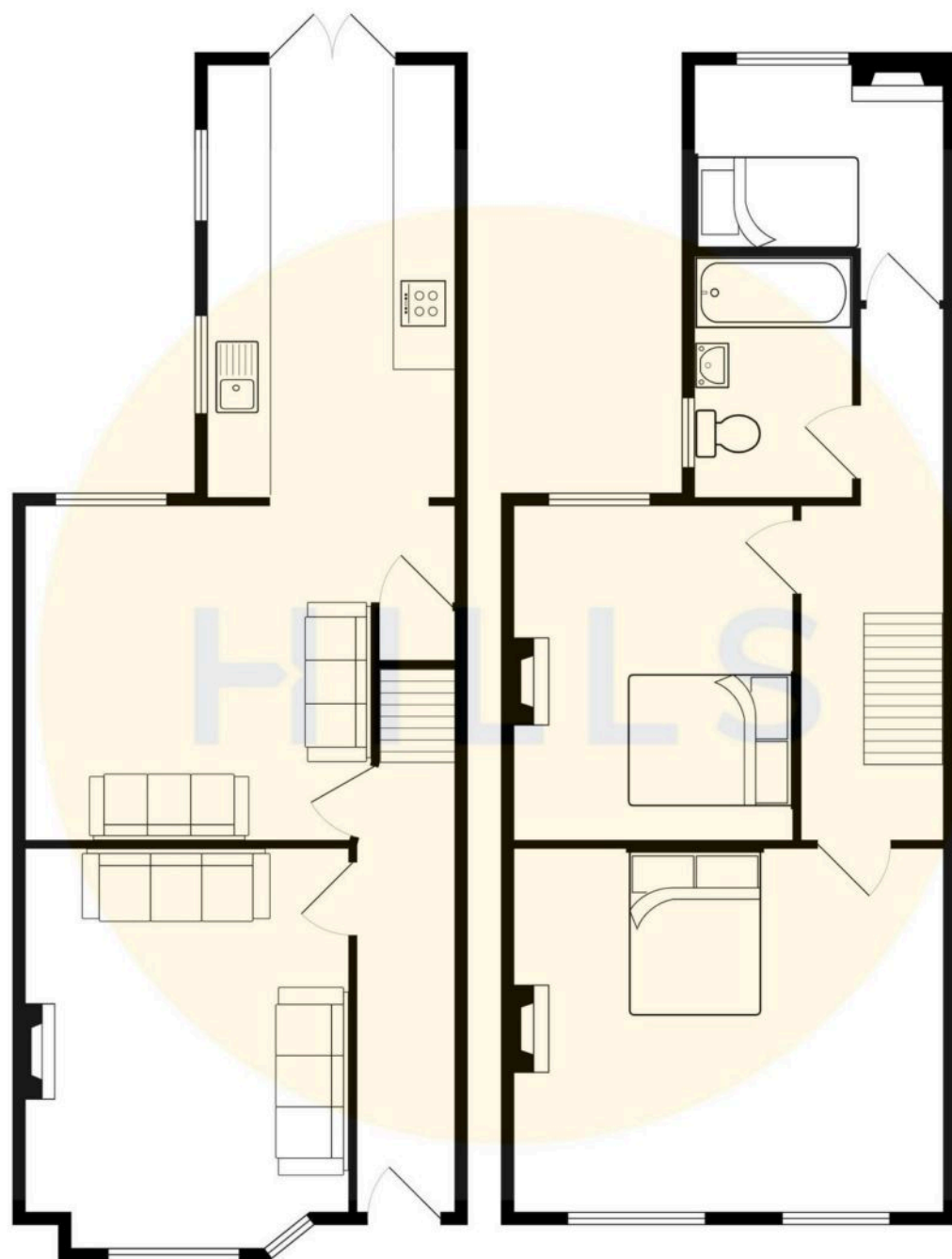
6' 5" x 8' 0" (1.95m x 2.45m)

Featuring a three piece suite including a bath with shower over, hand wash basin and W.C. Complete with ceiling spotlights, double glazed window and heated towel rail. Fitted with laminate flooring.



HILLS







Hills | Salfords Estate Agent

Hills Residential, Sentinel House Albert Street – M30 0SS

0161 707 4900

sales@hills.agency

www.hills.agency/



THE PROPERTY MISDESCRIPTIONS ACT 1991 The Agent has not tested any apparatus, equipment, fixtures and fittings or services and so cannot verify that they are in working order or fit for the purpose. A Buyer is advised to obtain verification from their Solicitor or Surveyor. References to the Tenure of a Property are based on information supplied by the Seller. The Agent has not had sight of the title documents. A Buyer is advised to obtain verification from their Solicitor. You are advised to check the availability of this property before travelling any distance to view. Every effort and precaution has been made to ensure these particulars are correct and not misleading but their accuracy is not guaranteed nor do they form part of any contract. If there is any point which is of particular importance to you, please contact us and we will provide any information you require. This is advisable, particularly if you intend to travel some distance to view the property. The mention of any appliances and services within these details does not imply that they are in full and efficient working order. These particulars are in draft form awaiting Vendors confirmation of their accuracy. These details must therefore be taken as a guide only.