

Gaskell Road, Eccles

Manchester



In Excess of £240,000

Gaskell Road

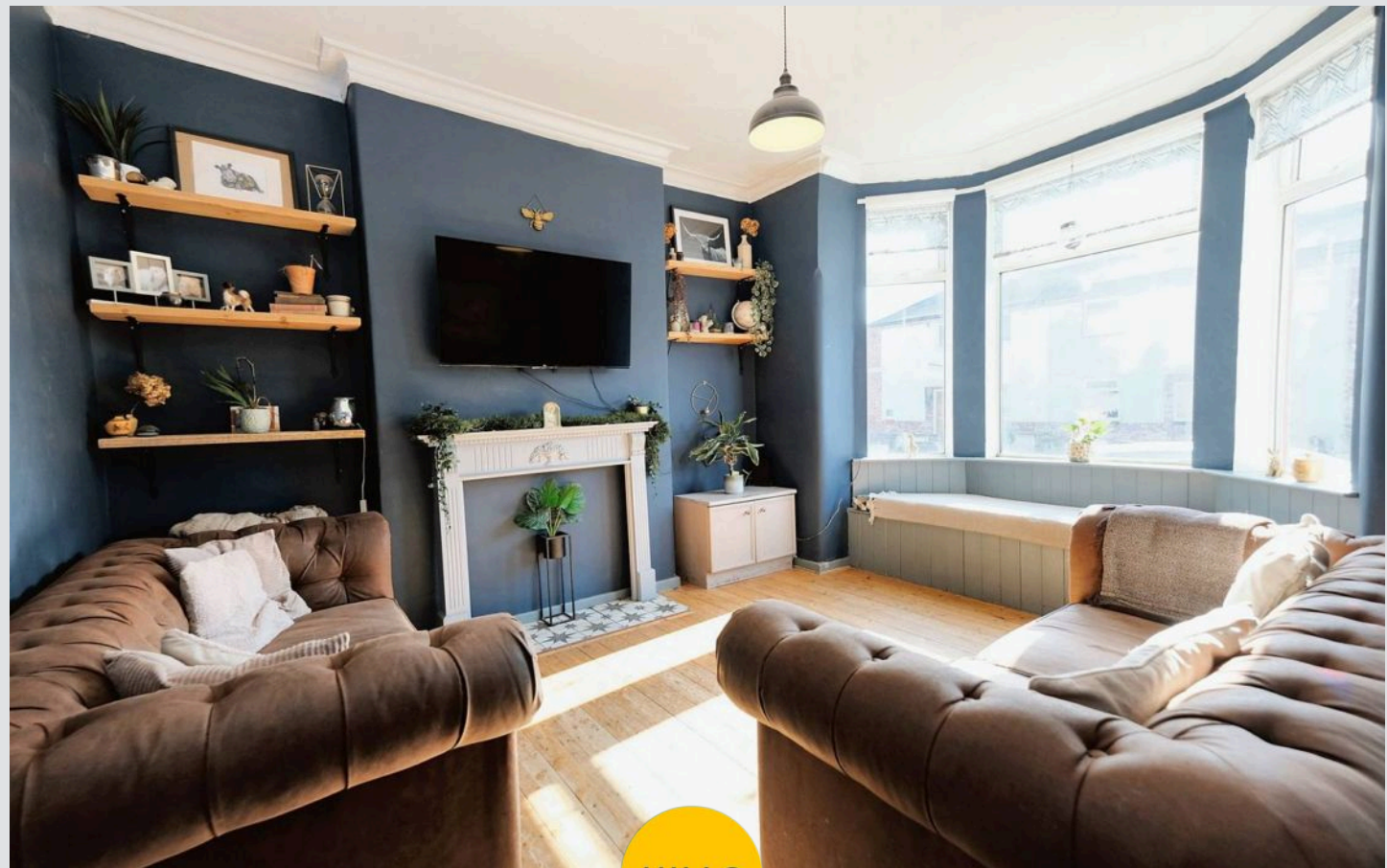
Eccles, Manchester

This BEAUTIFULLY PRESENTED THREE BEDROOM END TERRACED PROPERTY IS EXCELLENTLY LOCATED WITHIN A POPULAR RESIDENTIAL AREA, AND PRESENTS AN OUTSTANDING OPPORTUNITY FOR FIRST TIME BUYERS OR FAMILIES!

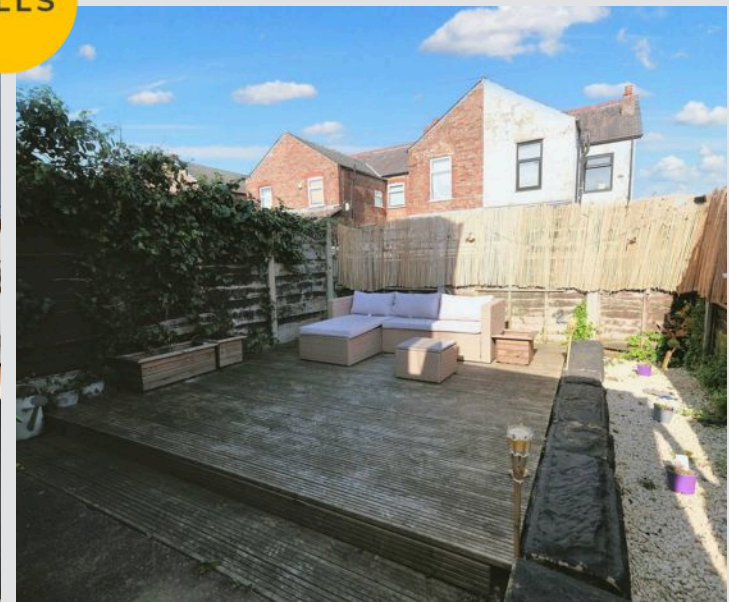
Council Tax band: B

Tenure: Leasehold

- SPACIOUS THREE BEDROOM END TERRACED PROPERTY
- LARGE BAY FRONTED LOUNGE AND SEPERATE DINING ROOM
- MODERN FITTED KITCHEN
- LOW MAINTENANCE REAR GARDEN AND OUTDOOR W.C.
- DOUBLE GLAZED AND GAS CENTRAL HEATED THROUGHOUT
- THREE GENEROUS SIZED BEDROOMS
- MODERN FAMILY BATHROOM SUITE
- BEAUTIFULLY PRESENTED THROUGHOUT
- PERFECT FAMILY HOME OR FIRST TIME BUY
- EXCELLENTLY LOCATED CLOSE TO SHOPS, SCHOOLS, PARKS AND BRILLIANT TRANSPORT LINKS



HILLS



Lounge

14' 10" x 11' 9" (4.52m x 3.59m)

Complete with a ceiling light point, double glazed bay window and wall mounted radiator. Fitted with wooden floorboards.

Entrance Hallway

12' 0" x 3' 3" (3.65m x 0.98m)

Entered via a uPVC front door. Complete with a ceiling light point and wall mounted radiator.

Dining Room

11' 10" x 15' 2" (3.60m x 4.62m)

Complete with a ceiling light point, double glazed window and wall mounted radiator. Fitted with floorboards.

Kitchen

19' 8" x 9' 6" (6.00m x 2.89m)

Featuring complementary wall and base units with space for a fridge freezer, washing machine, dryer. Cooker, extractor. Complete with a ceiling light point, double glazed window and wall mounted radiator. Fitted with a uPVC door and lino flooring.

Bedroom One

11' 9" x 15' 7" (3.59m x 4.75m)

Complete with a ceiling light point, two double glazed windows and wall mounted radiator. Fitted with laminate flooring.

Bedroom Two

9' 5" x 12' 11" (2.88m x 3.94m)

Complete with a ceiling light point, double glazed window and wall mounted radiator. Fitted with laminate flooring.

Bedroom Three

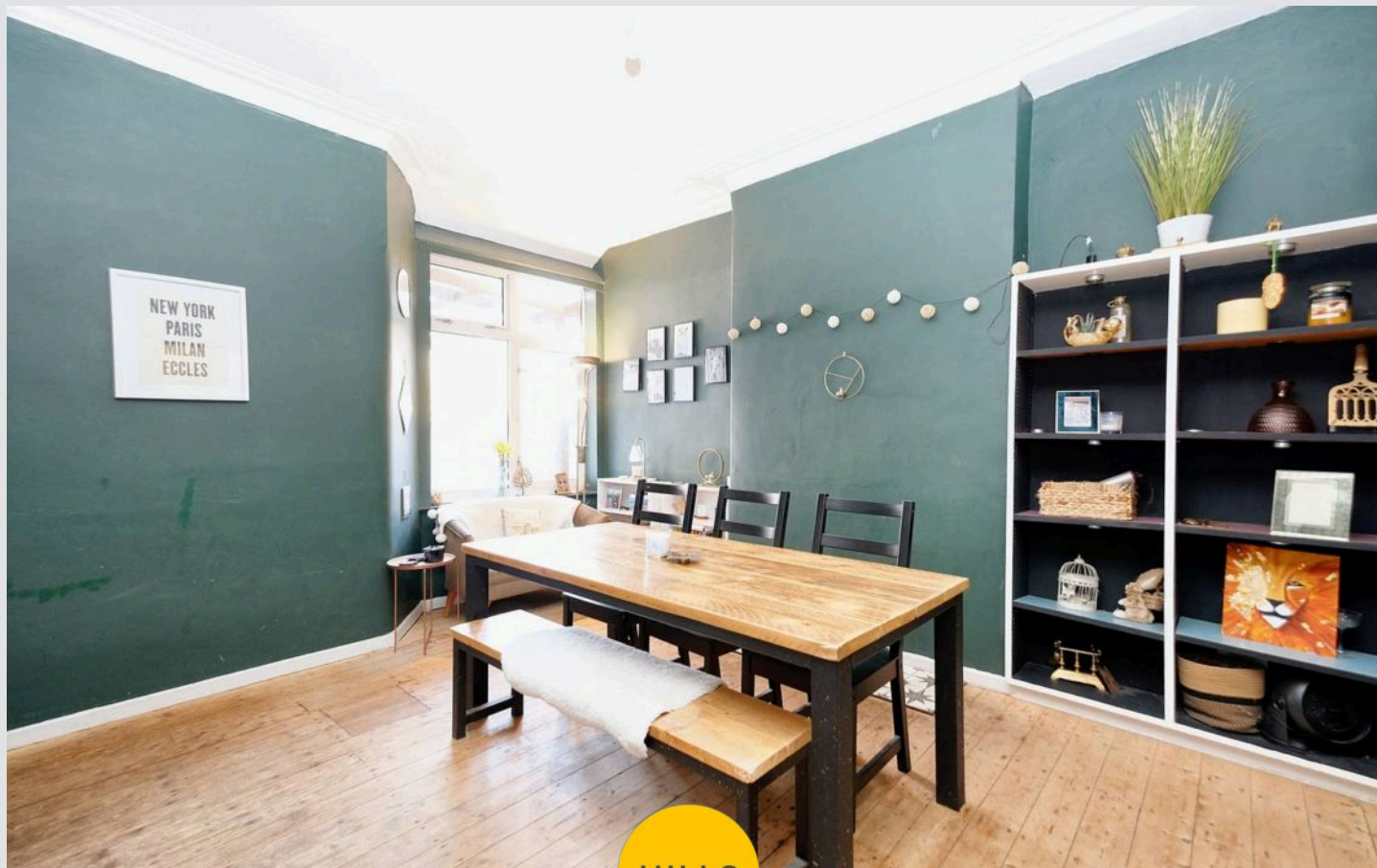
14' 1" x 10' 3" (4.30m x 3.13m)

Complete with a ceiling light point, double glazed window and wall mounted radiator. Fitted with laminate flooring.

Bathroom

6' 8" x 6' 7" (2.02m x 2.00m)

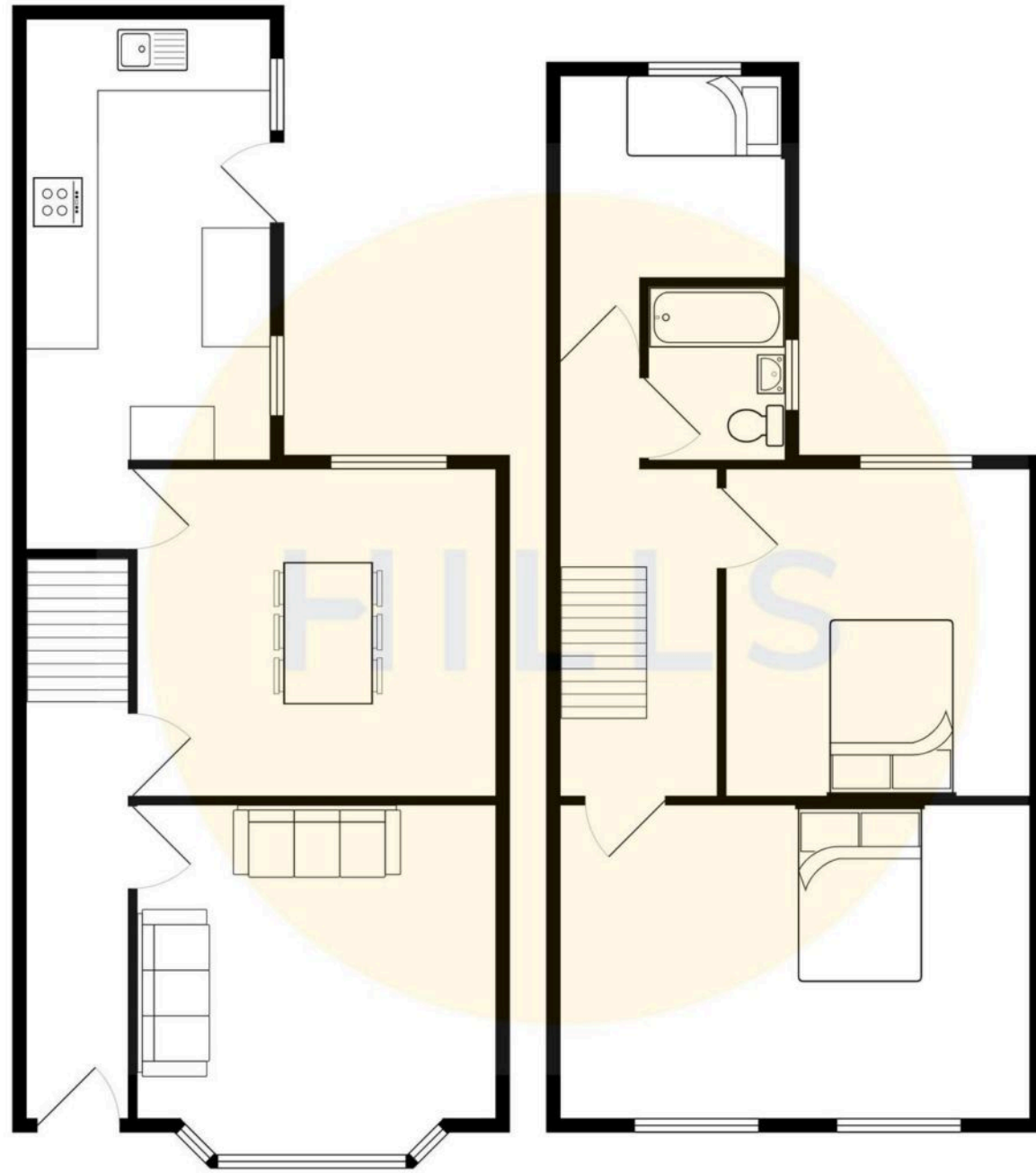
Featuring a three piece suite including a bath with shower over, hand wash basin and W.C. Complete with a ceiling light point, double glazed window and wall mounted radiator. Fitted with laminate tile flooring.





HILLS







Hills | Salfords Estate Agent

Hills Residential, Sentinel House Albert Street – M30 0SS

0161 707 4900

sales@hills.agency

www.hills.agency/



THE PROPERTY MISDESCRIPTIONS ACT 1991 The Agent has not tested any apparatus, equipment, fixtures and fittings or services and so cannot verify that they are in working order or fit for the purpose. A Buyer is advised to obtain verification from their Solicitor or Surveyor. References to the Tenure of a Property are based on information supplied by the Seller. The Agent has not had sight of the title documents. A Buyer is advised to obtain verification from their Solicitor. You are advised to check the availability of this property before travelling any distance to view. Every effort and precaution has been made to ensure these particulars are correct and not misleading but their accuracy is not guaranteed nor do they form part of any contract. If there is any point which is of particular importance to you, please contact us and we will provide any information you require. This is advisable, particularly if you intend to travel some distance to view the property. The mention of any appliances and services within these details does not imply that they are in full and efficient working order. These particulars are in draft form awaiting Vendors confirmation of their accuracy. These details must therefore be taken as a guide only.