



Willow Tree Court Aldred Street, Eccles

Manchester



In Excess of £130,000

Willow Tree Court

Manchester

Beautifully presented first floor apartment, ideal for first time buyers/investors. Spacious lounge & fitted kitchen, two large bedrooms, three piece bathroom. Allocated parking, prime location near amenities/transport links.

Council Tax band: B

Tenure: Leasehold

- Beautifully Presented First Floor Apartment
- Light and Airy Throughout
- Spacious Lounge
- Fitted Kitchen and Dining Space
- Two Double Bedrooms
- Three Piece Bathroom Suite
- Allocated Parking Space & Well Kept Communal Areas
- Excellently Located Close to Amenities & Transport Links
- Perfect First Time Buy



HILLS



Entrance Hallway

Entered via a hardwood front door. Complete with a ceiling light point and laminate flooring.

Lounge

12' 9" x 12' 3" (3.89m x 3.73m)

Complete with a ceiling light point, double glazed window and electric radiator. Fitted with laminate flooring.

Kitchen

11' 1" x 7' 8" (3.38m x 2.34m)

Featuring complementary wall and base with composite sink. Electric hob and oven. Space for a washing machine, fridge freezer. Complete with a ceiling light point, double glazed window, part tiled walls and laminate flooring.

Bedroom One

13' 2" x 9' 4" (4.01m x 2.84m)

Complete with a ceiling light point, double glazed window and electric radiator. Fitted with carpet flooring.

Bedroom Two

7' 9" x 7' 3" (2.36m x 2.21m)

Complete with a ceiling light point, double glazed window and electric radiator. Fitted with carpet flooring.

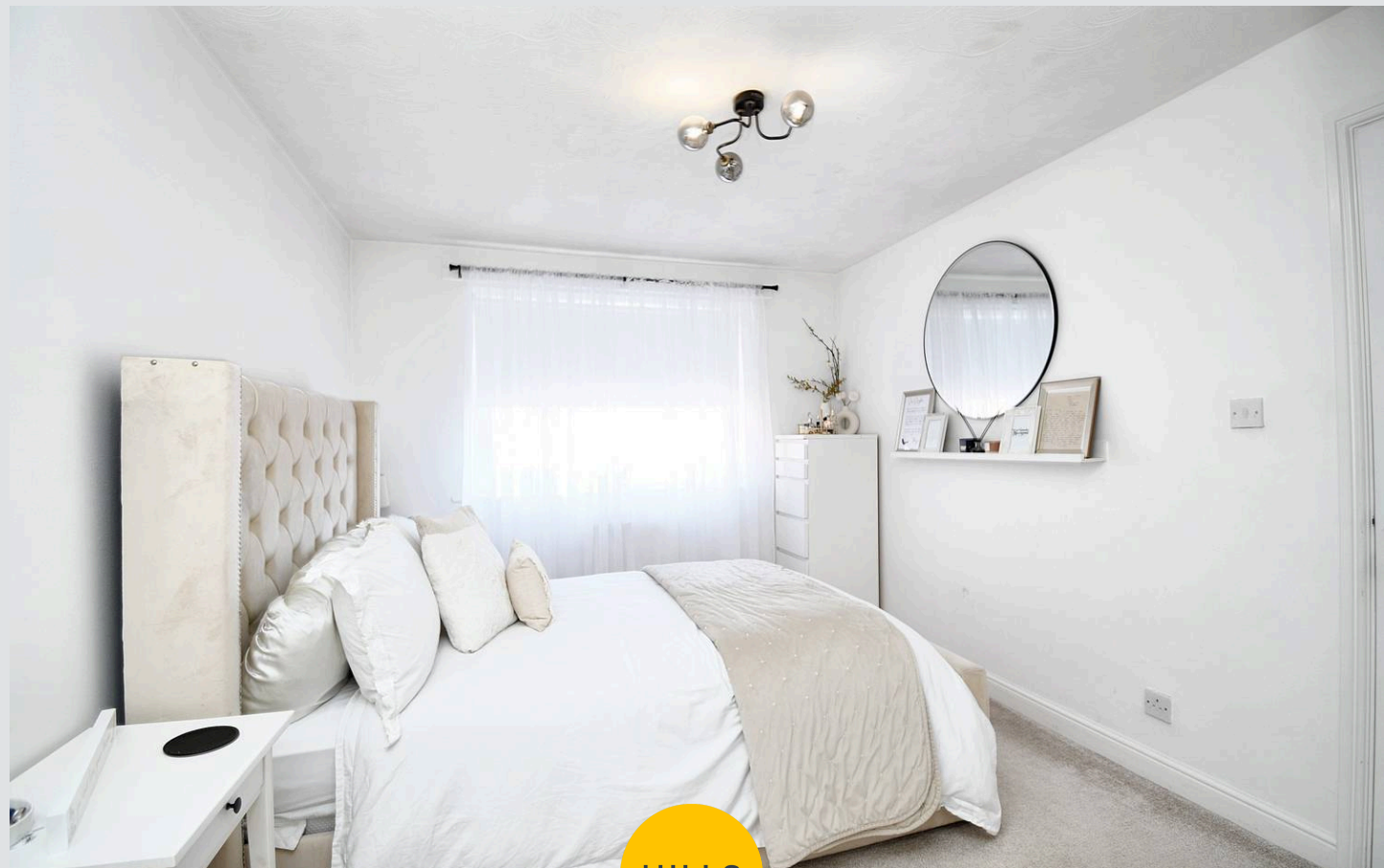
Bathroom

7' 8" x 5' 5" (2.34m x 1.65m)

Featuring a three piece suite including a bath with shower over, hand wash basin and W.C. Complete with a ceiling light point, part tiled walls and lino flooring.

External

Allocated parking space. Well kept communal gardens.

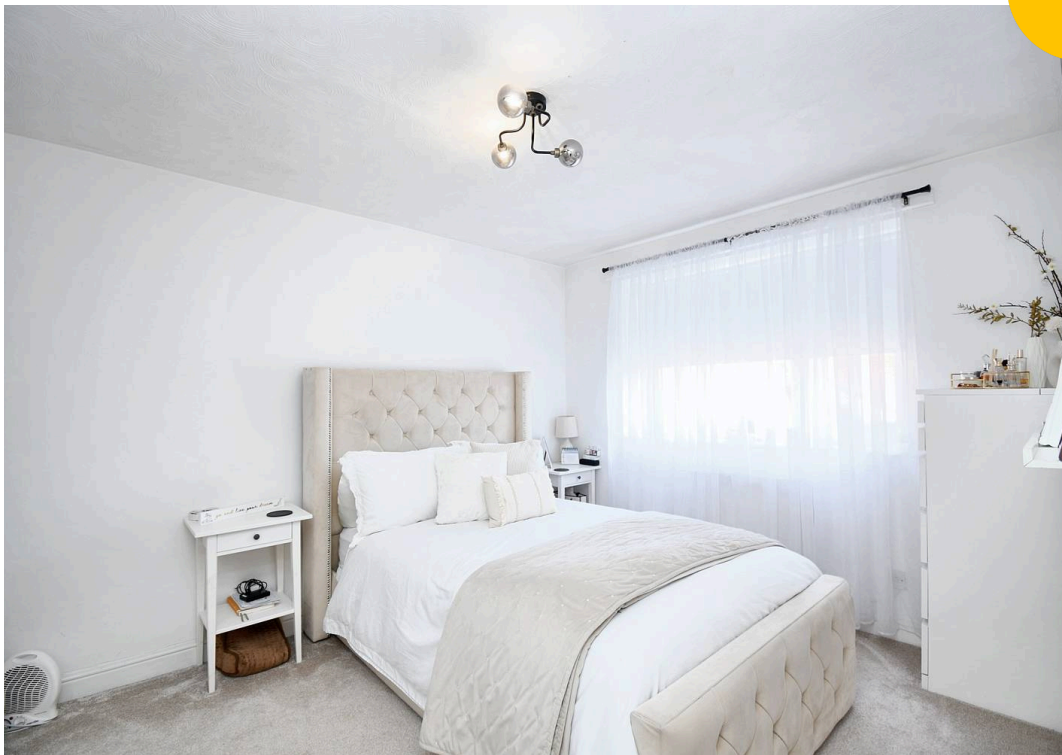


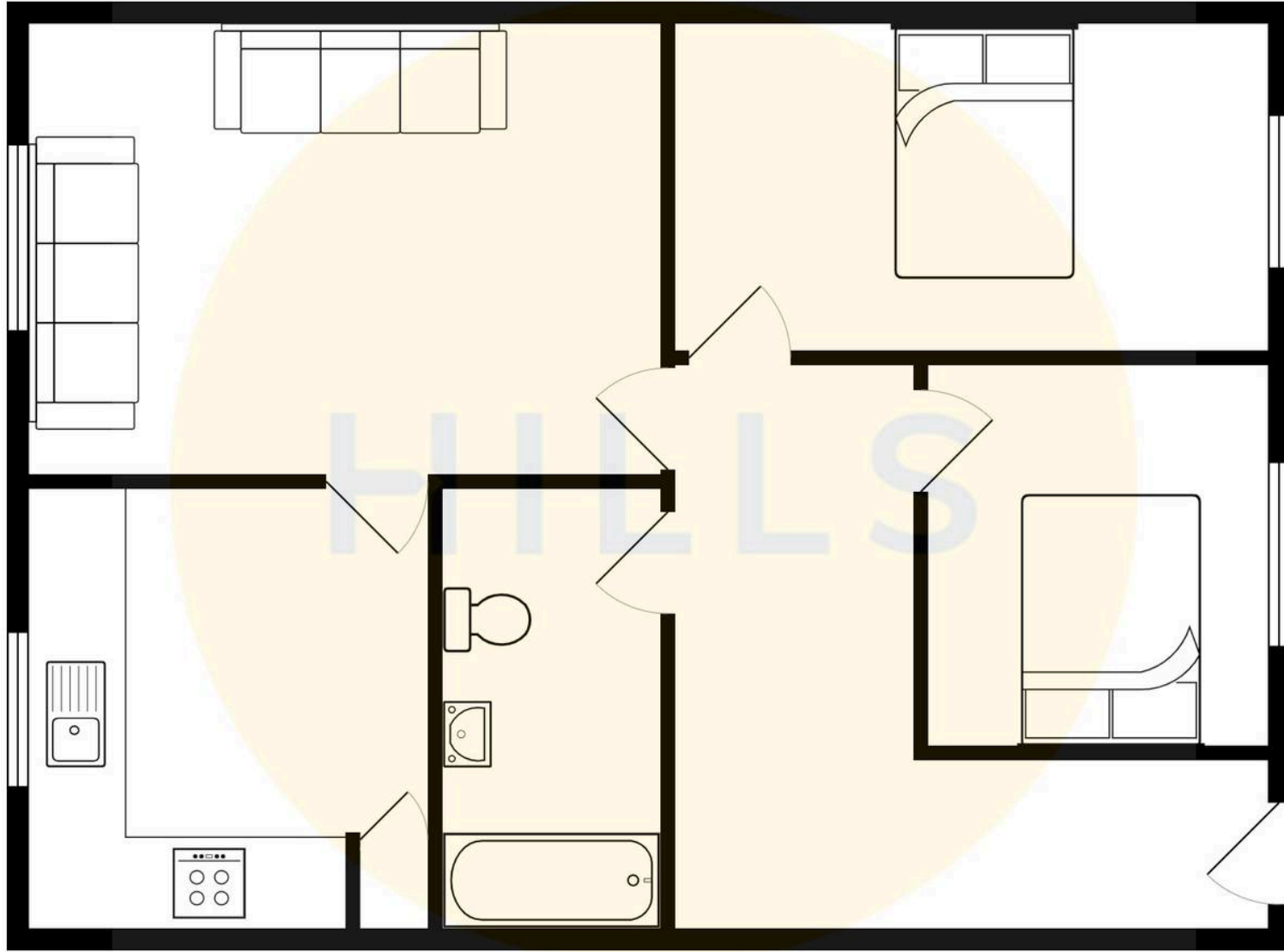
HILLS





HILLS







Hills | Salfords Estate Agent

Hills Residential, Sentinel House Albert Street – M30 0SS

0161 707 4900

sales@hills.agency

www.hills.agency/



THE PROPERTY MISDESCRIPTIONS ACT 1991 The Agent has not tested any apparatus, equipment, fixtures and fittings or services and so cannot verify that they are in working order or fit for the purpose. A Buyer is advised to obtain verification from their Solicitor or Surveyor. References to the Tenure of a Property are based on information supplied by the Seller. The Agent has not had sight of the title documents. A Buyer is advised to obtain verification from their Solicitor. You are advised to check the availability of this property before travelling any distance to view. Every effort and precaution has been made to ensure these particulars are correct and not misleading but their accuracy is not guaranteed nor do they form part of any contract. If there is any point which is of particular importance to you, please contact us and we will provide any information you require. This is advisable, particularly if you intend to travel some distance to view the property. The mention of any appliances and services within these details does not imply that they are in full and efficient working order. These particulars are in draft form awaiting Vendors confirmation of their accuracy. These details must therefore be taken as a guide only.