



Windmill Avenue

Salford



£270,000

Windmill Avenue

Salford

Spacious FOUR BEDROOM End Terraced Property
Located Within Walking Distance of Salford Quays &
Media City! Featuring a Driveway for Off-Road
Parking and Generously-Sized Rooms
Council Tax band: A

Tenure: Freehold

- Large Four Bedroom End Terraced Property
- Located Within Walking Distance of Salford Quays & Media City
- Large Family Lounge and a Downstairs W/C
- Modern Kitchen Diner
- Four Well-Proportioned Bedrooms
- Modern Wet Room Style Shower Room
- Driveway to the Front Providing Off-Road Parking for Several Cars
- Private Garden to the Rear Complete with Paving and Mature Plants
- Close to Excellent Transport Links Throughout Manchester
- Viewing is Highly Recommended!



HILLS



Porch

Complete with a ceiling light point and carpet flooring.

Lounge

15' 11" x 14' 4" (4.86m x 4.37m)

Complete with a ceiling light point, double glazed window and wall mounted radiator. Fitted with carpet flooring.

Entrance Hallway

Complete with a ceiling light point and wall mounted radiator. Fitted with carpet flooring.

Downtairs W.C.

5' 10" x 3' 8" (1.78m x 1.13m)

Featuring a two piece suite including hand wash basin and W.C. Complete with a ceiling light point and tiled flooring.

Kitchen Diner

15' 10" x 10' 9" (4.83m x 3.27m)

Featuring complementary fitted units with space for a washing machine, dryer and freestanding oven. Complete with two ceiling light points, double glazed window and wall mounted radiator. Fitted with cushioned flooring.

Landing

Complete with a ceiling light point and carpet flooring.

Bedroom One

14' 6" x 7' 11" (4.42m x 2.41m)

Complete with a ceiling light point, double glazed window and wall mounted radiator. Fitted with carpet flooring.

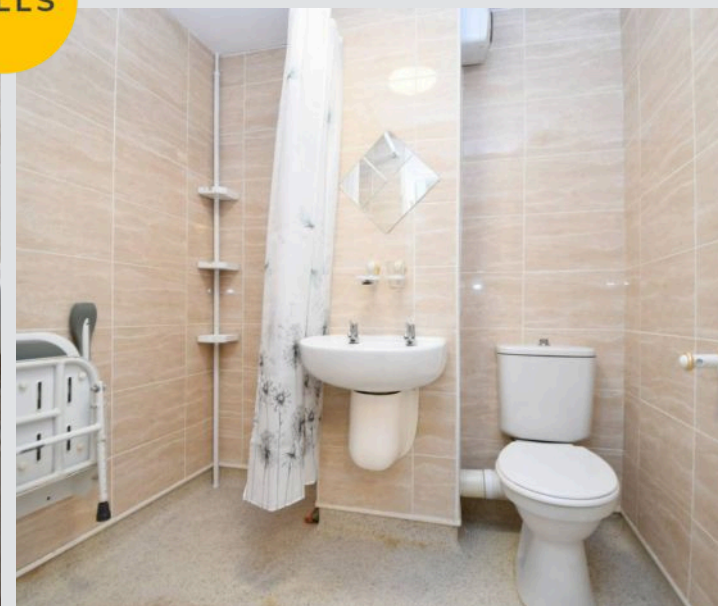
Bedroom Two

14' 6" x 7' 10" (4.42m x 2.40m)

Complete with a ceiling light point, double glazed window and wall mounted radiator. Fitted with carpet flooring.



HILLS



Bedroom Three

10' 10" x 6' 7" (3.31m x 2.00m)

Complete with a ceiling light point, double glazed window and wall mounted radiator. Fitted with carpet flooring.

Bedroom Four

9' 3" x 7' 9" (2.81m x 2.36m)

Complete with a ceiling light point, double glazed window and wall mounted radiator. Fitted with carpet flooring.

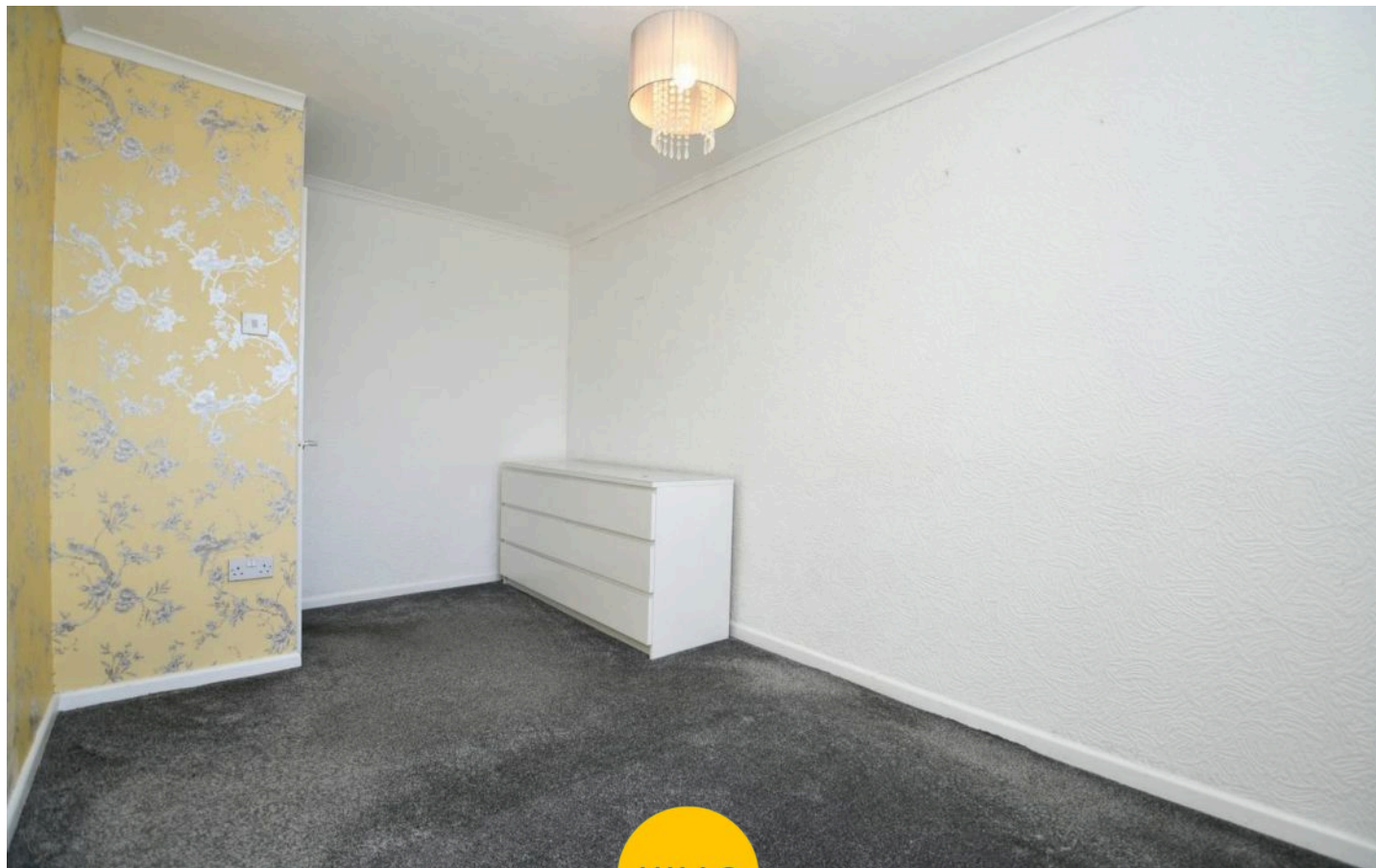
Wet Room

6' 4" x 5' 5" (1.94m x 1.64m)

Featuring a shower, hand wash basin and W.C. Complete with a ceiling light point, tiled walls and cushioned flooring.

External

To the front of the property is a driveway and well presented garden. To the rear of the property is a garden with mature plants, paving and brick built storage.

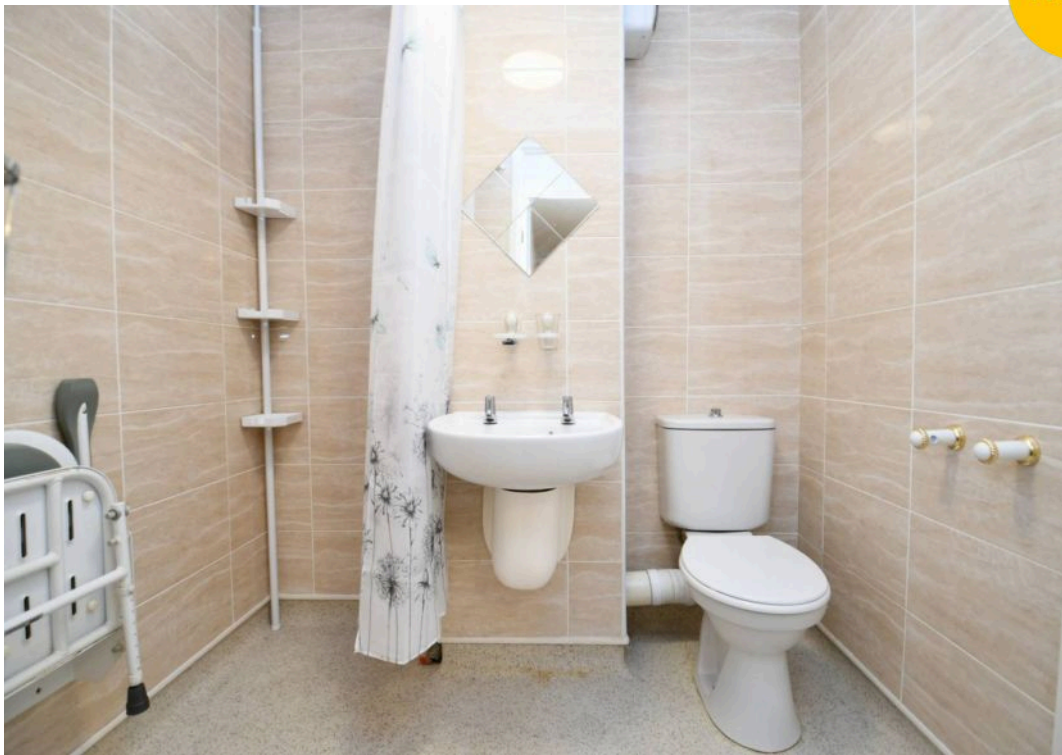


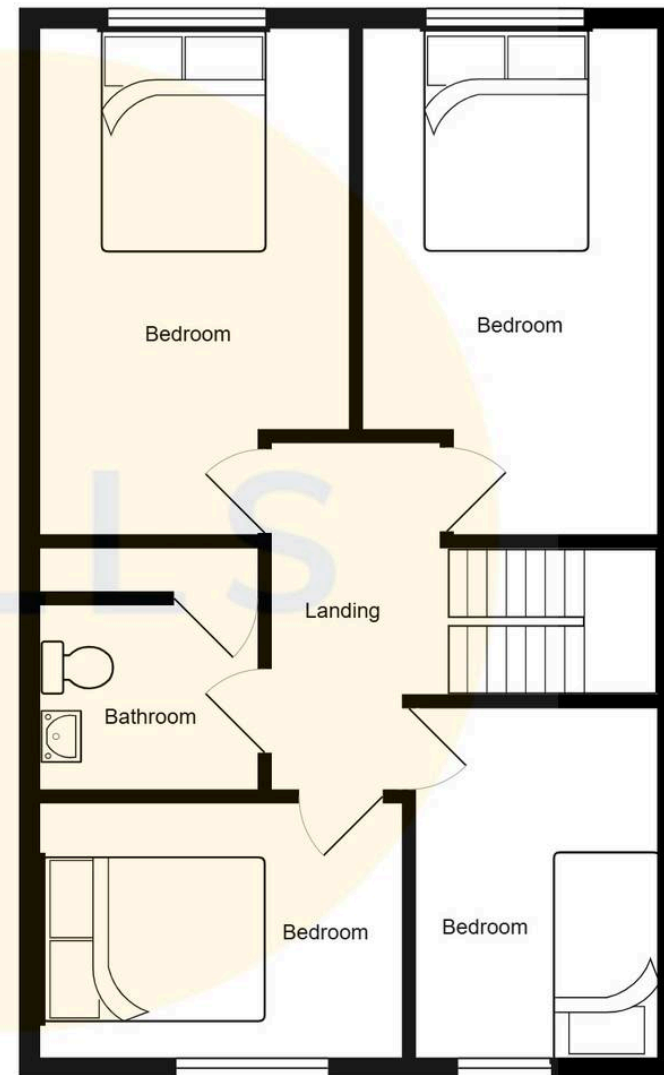
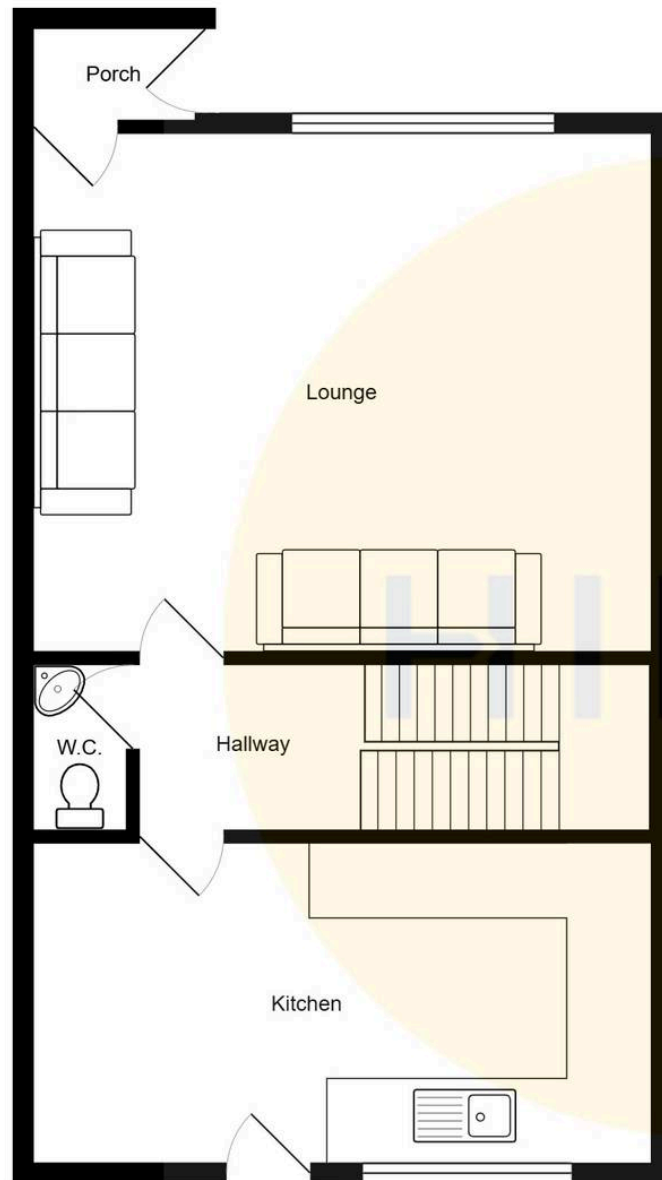
HILLS





HILLS







Hills | Salfords Estate Agent

Hills Residential, Sentinel House Albert Street – M30 0SS

0161 707 4900

sales@hills.agency

www.hills.agency/



THE PROPERTY MISDESCRIPTIONS ACT 1991 The Agent has not tested any apparatus, equipment, fixtures and fittings or services and so cannot verify that they are in working order or fit for the purpose. A Buyer is advised to obtain verification from their Solicitor or Surveyor. References to the Tenure of a Property are based on information supplied by the Seller. The Agent has not had sight of the title documents. A Buyer is advised to obtain verification from their Solicitor. You are advised to check the availability of this property before travelling any distance to view. Every effort and precaution has been made to ensure these particulars are correct and not misleading but their accuracy is not guaranteed nor do they form part of any contract. If there is any point which is of particular importance to you, please contact us and we will provide any information you require. This is advisable, particularly if you intend to travel some distance to view the property. The mention of any appliances and services within these details does not imply that they are in full and efficient working order. These particulars are in draft form awaiting Vendors confirmation of their accuracy. These details must therefore be taken as a guide only.