



Chaplin Close  
Salford



Offers Over £325,000

# Chaplin Close

Salford

**\*\*NO VENDOR CHAIN\*\*** Fantastic, Three Bedroom End Townhouse Located on a Peaceful Development Just a Short Walk from Buile Hill Park! Featuring a Stunning, South-Facing Balcony Overlooking the Garden!

Council Tax band: E

Tenure: Leasehold

- Fantastic Three Bedroom End Townhouse
- Located on a Peaceful Development, Just a Short Walk from Buile Hill Park
- Boasting a South-Facing Balcony with Views Over the Landscaped Garden and Greenery
- Three Double Bedrooms, with an Ensuite to the Main Bedroom
- Open Plan Living, Dining and Kitchen Area with a Contemporary Media Wall and Access to the Balcony
- Integrated Garage and a Parking Space
- Within Easy Access of Salford Royal Hospital and Local Schooling
- Close to Excellent Transport Links into Salford Quays, Media City and Manchester City Centre
- Viewing is Highly Recommended!



### Entrance Hallway

### Integral Garage

16' 10" x 8' 2" (5.12m x 2.48m)

### Office

9' 9" x 8' 0" (2.97m x 2.44m)

### Utility Room

7' 8" x 6' 7" (2.34m x 2.00m)

### Bedroom Three

11' 0" x 8' 0" (3.35m x 2.45m)

### Shower Room

5' 11" x 5' 8" (1.80m x 1.72m)

### Landing

### Lounge / Kitchen / Diner

28' 11" x 15' 2" (8.82m x 4.62m)

### Landing

### Bedroom One

15' 1" x 8' 11" (4.60m x 2.73m)

### Dressing Room

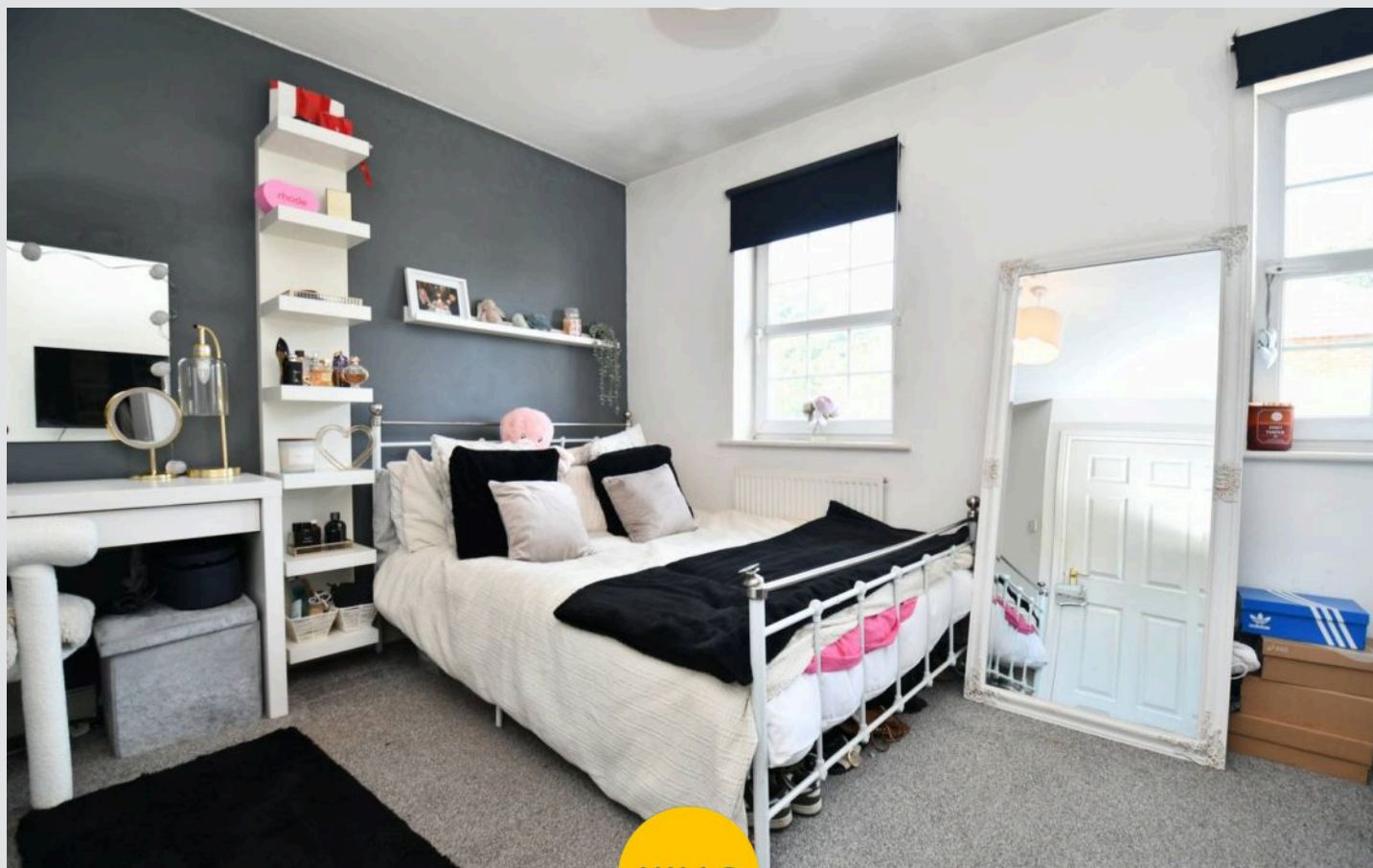
7' 8" x 5' 10" (2.34m x 1.78m)

### Bedroom Two

12' 1" x 10' 11" (3.69m x 3.33m)

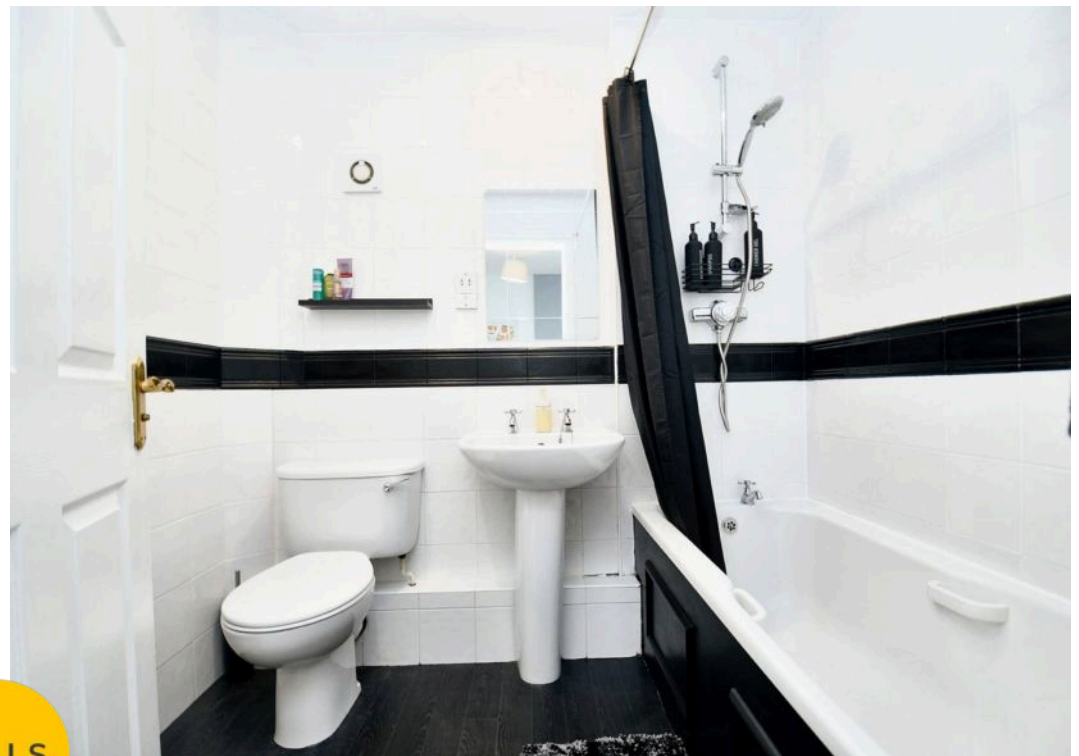
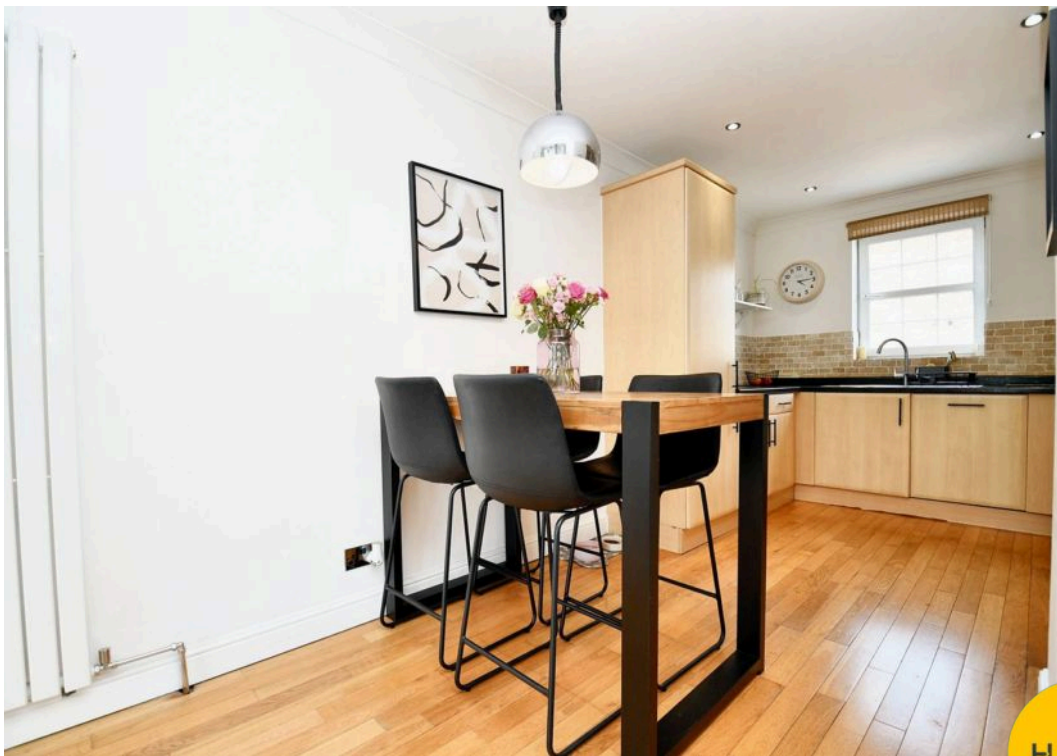
### En suite

7' 1" x 5' 6" (2.15m x 1.67m)

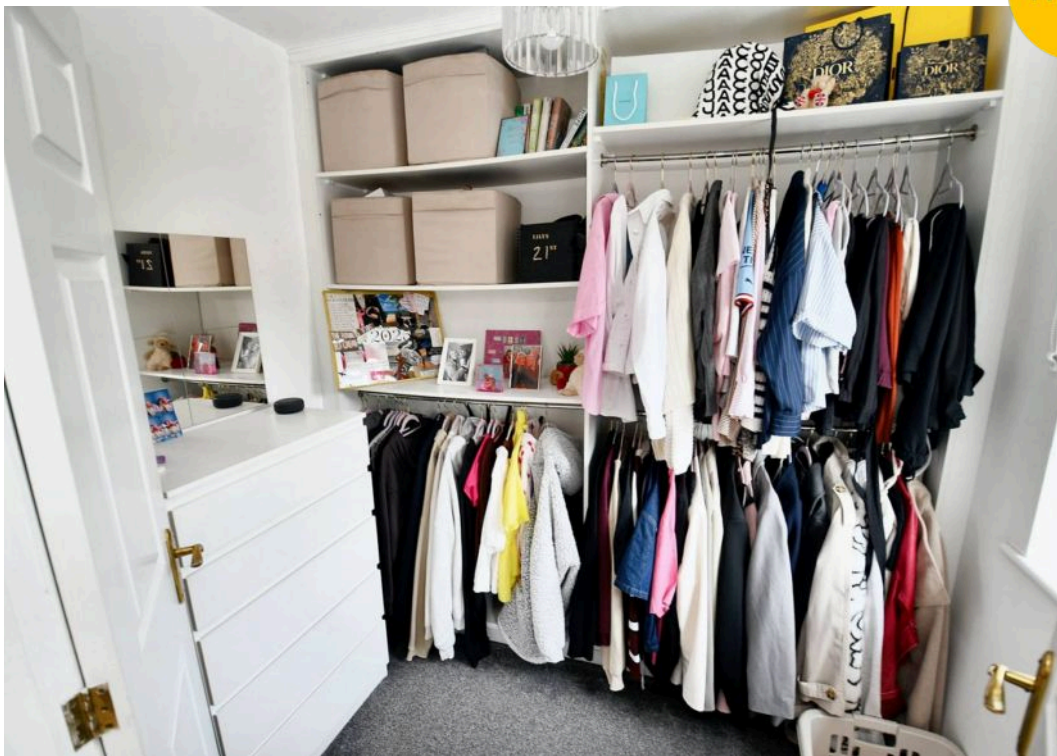


HILLS





HILLS







## Hills | Salfords Estate Agent

Hills Residential, Sentinel House Albert Street – M30 0SS

0161 707 4900

[sales@hills.agency](mailto:sales@hills.agency)

[www.hills.agency/](http://www.hills.agency/)



THE PROPERTY MISDESCRIPTIONS ACT 1991 The Agent has not tested any apparatus, equipment, fixtures and fittings or services and so cannot verify that they are in working order or fit for the purpose. A Buyer is advised to obtain verification from their Solicitor or Surveyor. References to the Tenure of a Property are based on information supplied by the Seller. The Agent has not had sight of the title documents. A Buyer is advised to obtain verification from their Solicitor. You are advised to check the availability of this property before travelling any distance to view. Every effort and precaution has been made to ensure these particulars are correct and not misleading but their accuracy is not guaranteed nor do they form part of any contract. If there is any point which is of particular importance to you, please contact us and we will provide any information you require. This is advisable, particularly if you intend to travel some distance to view the property. The mention of any appliances and services within these details does not imply that they are in full and efficient working order. These particulars are in draft form awaiting Vendors confirmation of their accuracy. These details must therefore be taken as a guide only.