



Amersham Street

Salford



£325,000

Amersham Street

Salford

Only Three Years Old - Located on the Fantastic Spinners Quarter Development is this Modern Three Bedroom Townhouse! Within Walking Distance of Salford Quays & Media City!

Council Tax band: B

Tenure: Freehold

- Modern Three Bedroom Townhouse, Only Three Years Old
- Family Lounge and a Contemporary Kitchen Diner with Patio Doors to the Rear
- Modern Three-Piece Bathroom and a Downstairs w/c
- Three Well-Proportioned Bedrooms
- Large Main Bedroom, with a Modern, Three-Piece Ensuite Shower Room
- Private Parking Space to the Front
- Landscaped Garden to the Rear with Artificial Grass, Sleeper Bedding for Plants and Paving
- Within Walking Distance of Salford Quays & Media City
- Close to Langworthy Tram Stop, with Direct Access into Manchester City Centre
- Boasts Several Upgrades



HILLS



Vestibule

Complete with a ceiling light point and double glazed window.

Entrance Hallway

Complete with a ceiling light point, wall mounted radiator and laminate flooring.

Lounge

15' 5" x 10' 6" (4.69m x 3.20m)

Complete with a ceiling light point, double glazed window and wall mounted radiator. Fitted with laminate flooring.

Kitchen / Diner

13' 11" x 10' 6" (4.25m x 3.21m)

Featuring modern fitted units with integral hob, oven, washing machine, microwave, dishwasher and fridge freezer. Complete with ceiling spotlights, double glazed patio doors and wall mounted radiator. Fitted with tiled flooring.

Downstairs W.C.

6' 1" x 3' 1" (1.85m x 0.93m)

Featuring a two piece suite including a hand wash basin and W.C. Complete with a ceiling light point, wall mounted radiator and tiled flooring.

Landing

Complete with a ceiling light point and carpet flooring.

Bedroom Two

13' 11" x 9' 7" (4.24m x 2.92m)

Complete with a ceiling light point, double glazed window and wall mounted radiator. Fitted with carpet flooring.

Bathroom

6' 11" x 6' 5" (2.11m x 1.96m)

Featuring a three piece suite including a bath with shower over, hand wash basin and W.C. Complete with ceiling spotlights, part tiled walls and tiled flooring.



HILLS



Bedroom Three

9' 8" x 6' 11" (2.94m x 2.12m)

Complete with a ceiling light point, double glazed window and wall mounted radiator. Fitted with carpet flooring.

Bedroom One

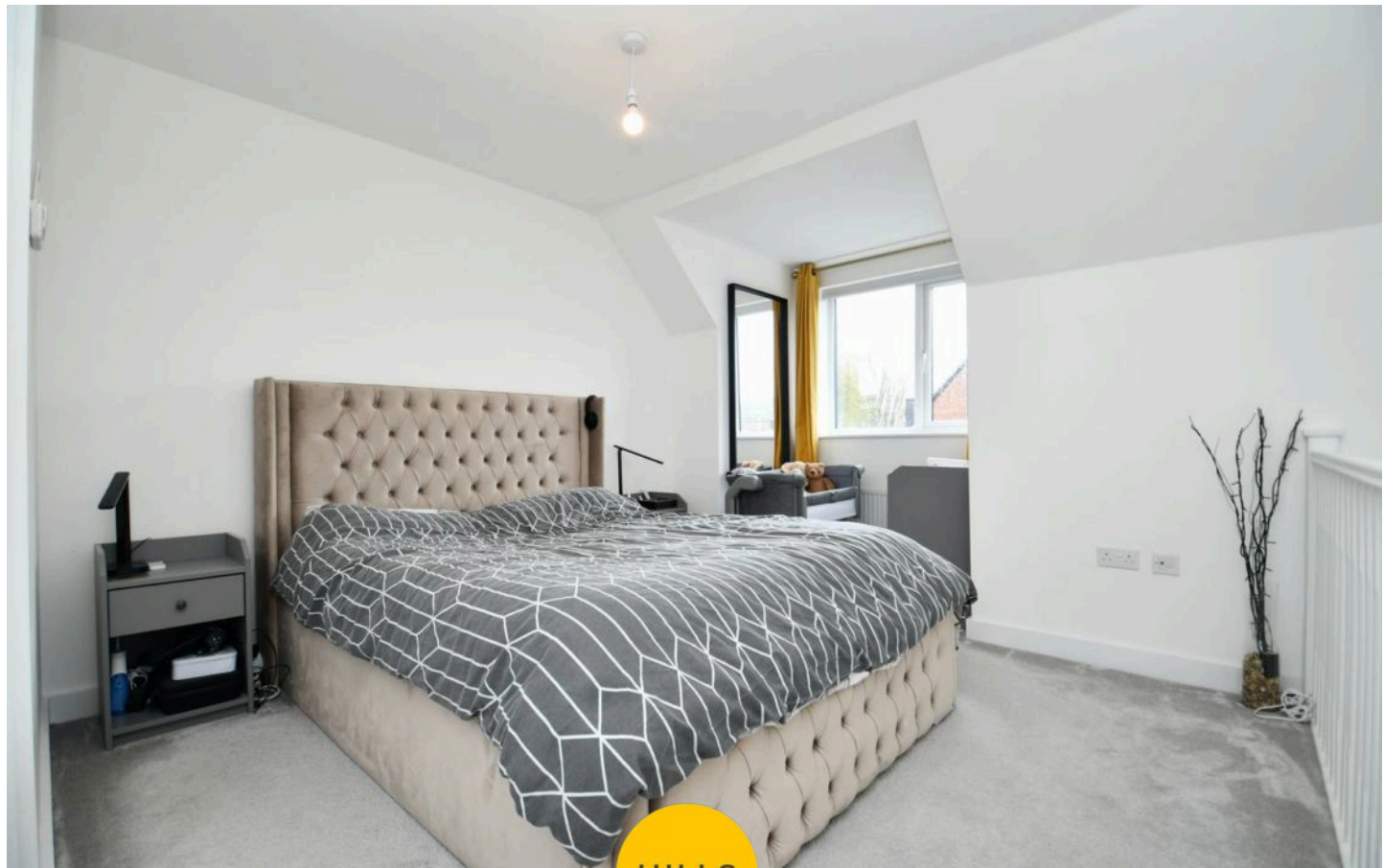
16' 2" x 13' 11" (4.93m x 4.25m)

Complete with a two ceiling light points, double glazed Velux window and two wall mounted radiators. Fitted with carpet flooring.

En suite

6' 6" x 5' 9" (1.99m x 1.75m)

Featuring a three piece suite including a shower, hand wash basin and W.C. Complete with a ceiling light point, Velux window, part tiled walls and tiled flooring.



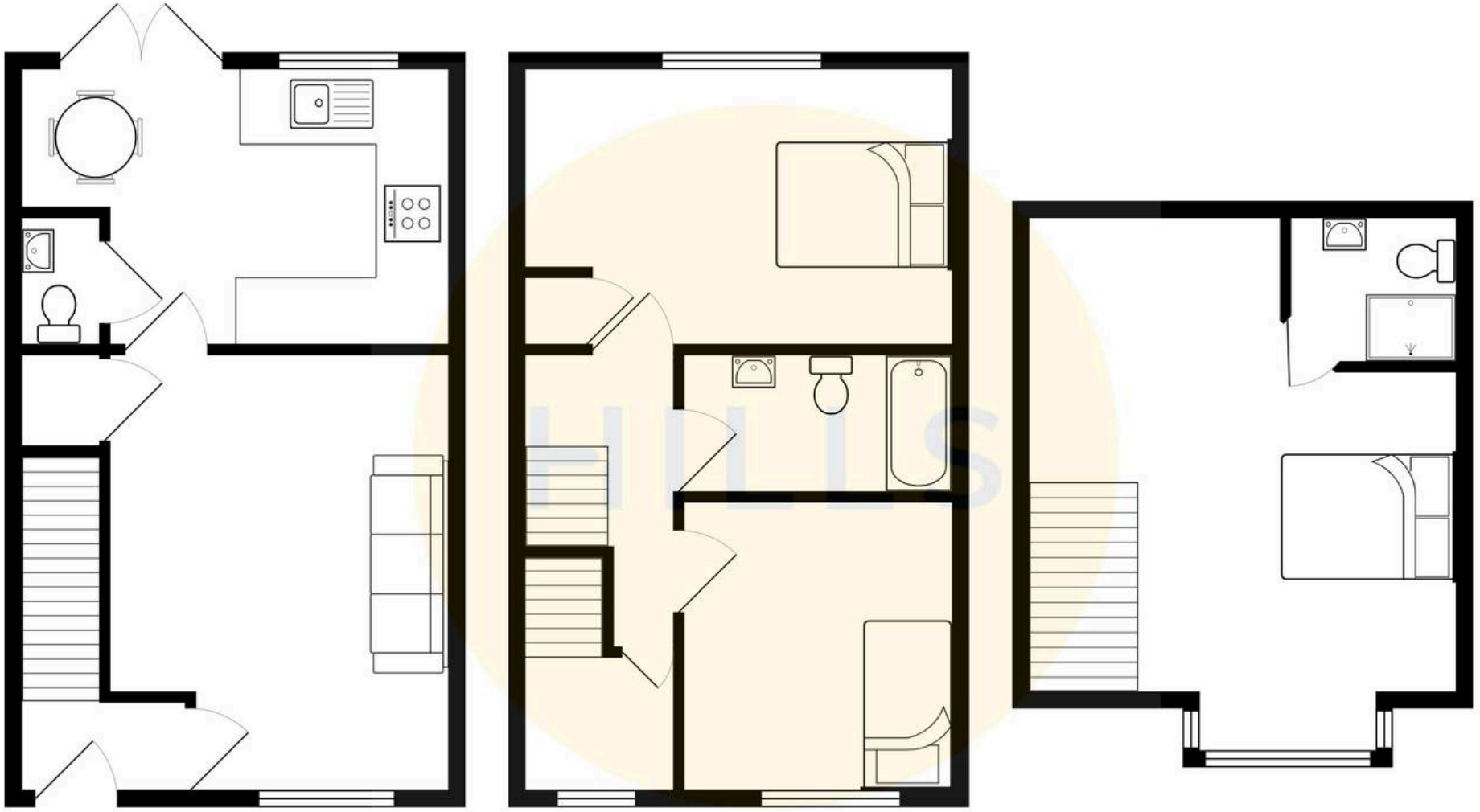
HILLS

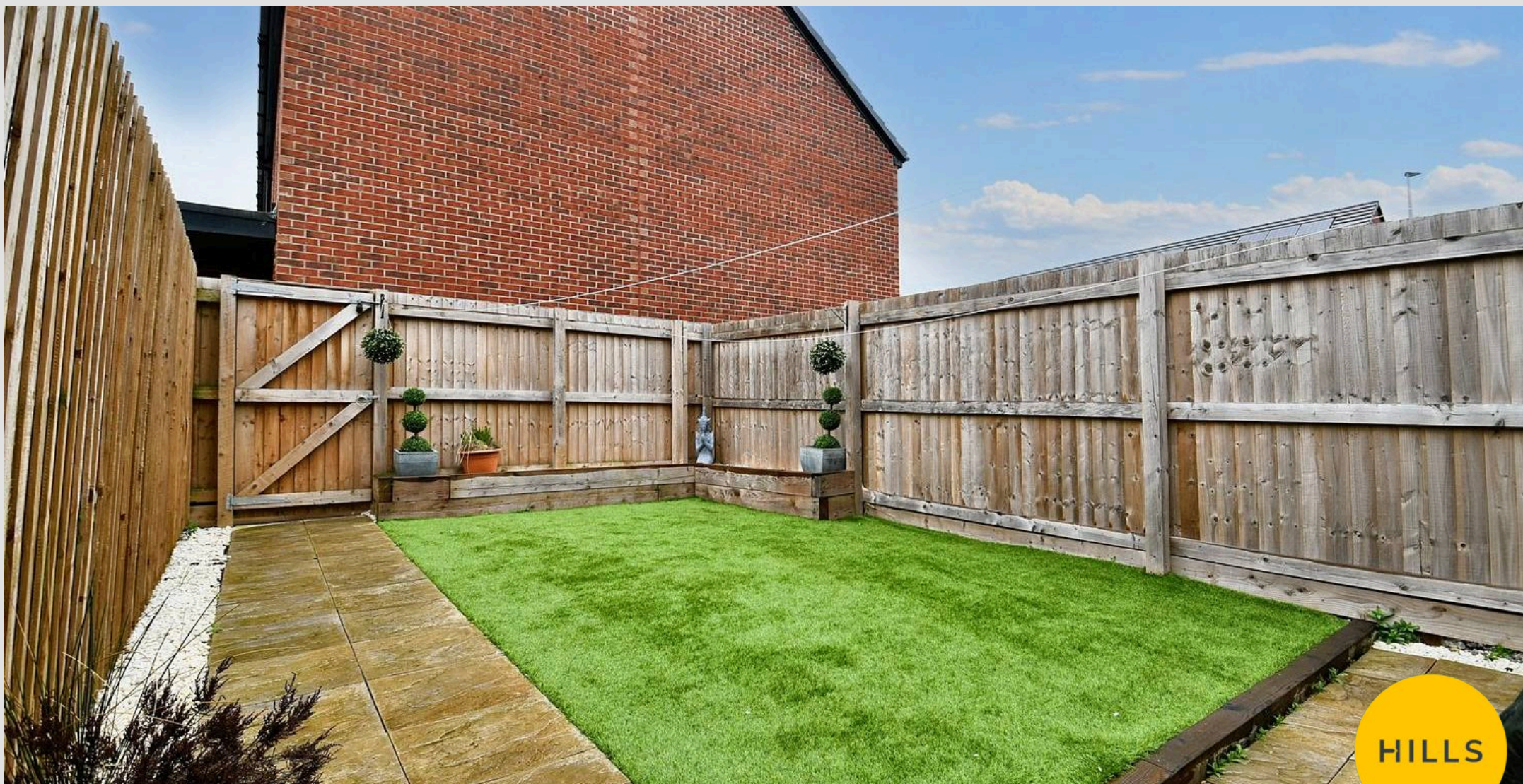




HILLS







Hills | Salfords Estate Agent

Hills Residential, Sentinel House Albert Street – M30 0SS

0161 707 4900

sales@hills.agency

www.hills.agency/



THE PROPERTY MISDESCRIPTIONS ACT 1991 The Agent has not tested any apparatus, equipment, fixtures and fittings or services and so cannot verify that they are in working order or fit for the purpose. A Buyer is advised to obtain verification from their Solicitor or Surveyor. References to the Tenure of a Property are based on information supplied by the Seller. The Agent has not had sight of the title documents. A Buyer is advised to obtain verification from their Solicitor. You are advised to check the availability of this property before travelling any distance to view. Every effort and precaution has been made to ensure these particulars are correct and not misleading but their accuracy is not guaranteed nor do they form part of any contract. If there is any point which is of particular importance to you, please contact us and we will provide any information you require. This is advisable, particularly if you intend to travel some distance to view the property. The mention of any appliances and services within these details does not imply that they are in full and efficient working order. These particulars are in draft form awaiting Vendors confirmation of their accuracy. These details must therefore be taken as a guide only.