

Milford Street

Salford



Offers Over £190,000

Milford Street

Salford

Council Tax band: A

Tenure: Freehold

- Two Bedroom, Bay-Fronted Terraced Property
- Bay-Fronted Lounge and a Spacious Dining Room
- Modern Fitted Kitchen, and a Three-Piece Bathroom
- Two Double Bedrooms
- Low-Maintenance Courtyard Gardens to the Front and Rear
- Within Walking Distance of Salford Quays and Media City, which is Host to a Fine Array of Bars, Shops and Restaurants
- Close to Langworthy Tram Stop, which Provides Direct Access into Manchester City Centre
- Ideal First Time Home or Investment, Viewing is Highly Recommended!



HILLS



Lounge

11' 5" x 11' 10" (3.49m x 3.60m)

Complete with a ceiling light point, double glazed window and wall mounted radiator. Fitted with laminate flooring.

Kitchen

7' 0" x 10' 3" (2.14m x 3.12m)

Featuring complementary wall and base units with tiled splashback. Complete with a ceiling light point, double glazed window and tiled flooring.

Dining Room

10' 4" x 10' 11" (3.16m x 3.32m)

Complete with a ceiling light point, double glazed window and wall mounted radiator. Fitted with laminate flooring.

Landing

Complete with a ceiling light point and carpet flooring.

Bedroom One

10' 7" x 15' 1" (3.23m x 4.60m)

Complete with a ceiling light point, two double glazed windows and a wall mounted radiator. Fitted with carpet flooring.

Bedroom Two

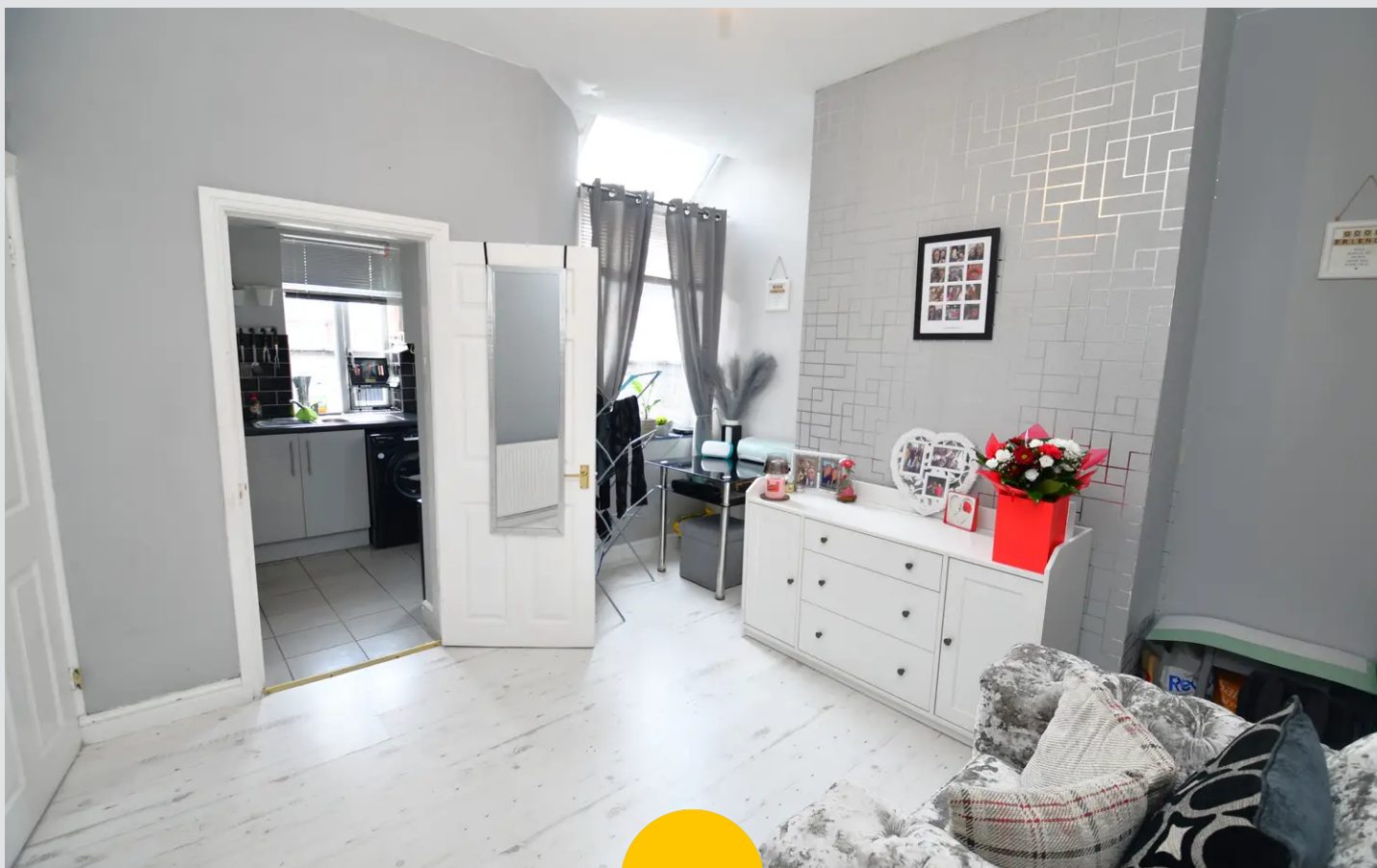
10' 10" x 9' 11" (3.31m x 3.01m)

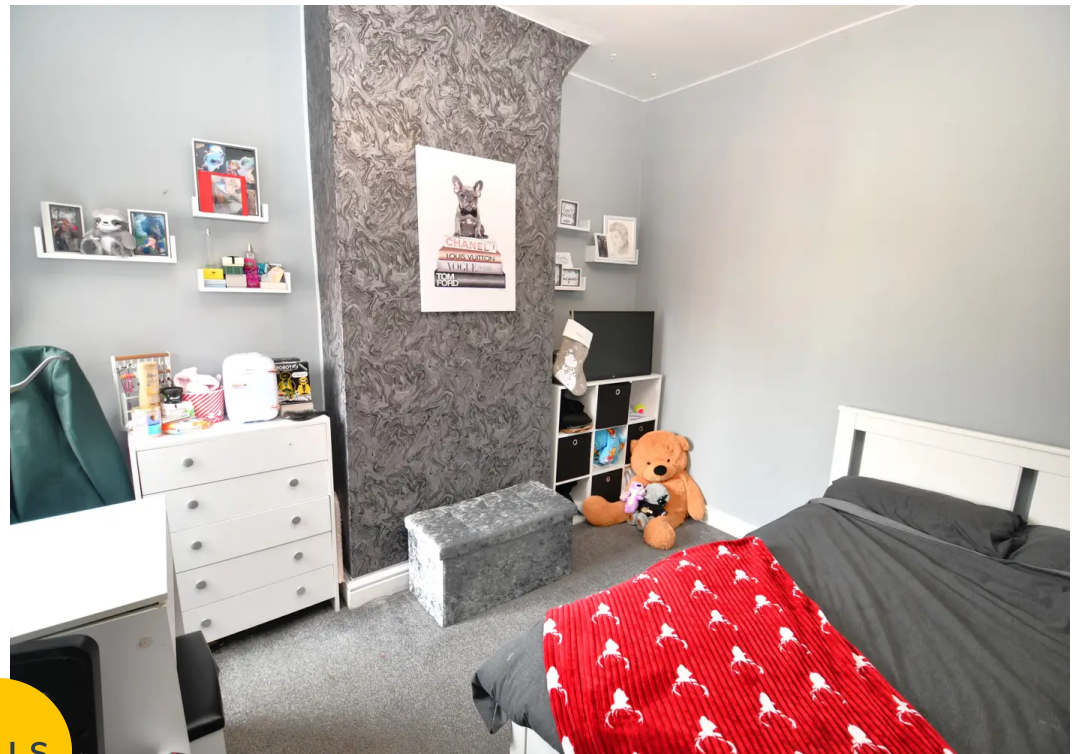
Complete with a ceiling light point, double glazed window and wall mounted radiator. Fitted with carpet flooring.

Bathroom

7' 1" x 10' 3" (2.15m x 3.12m)

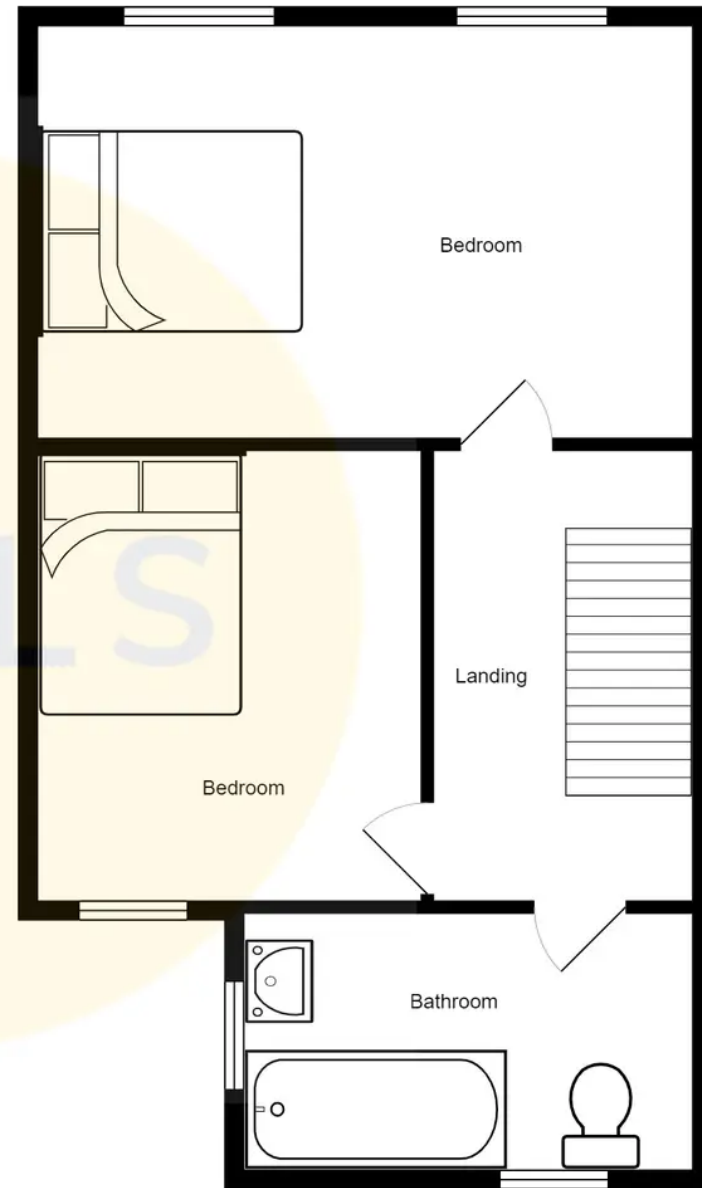
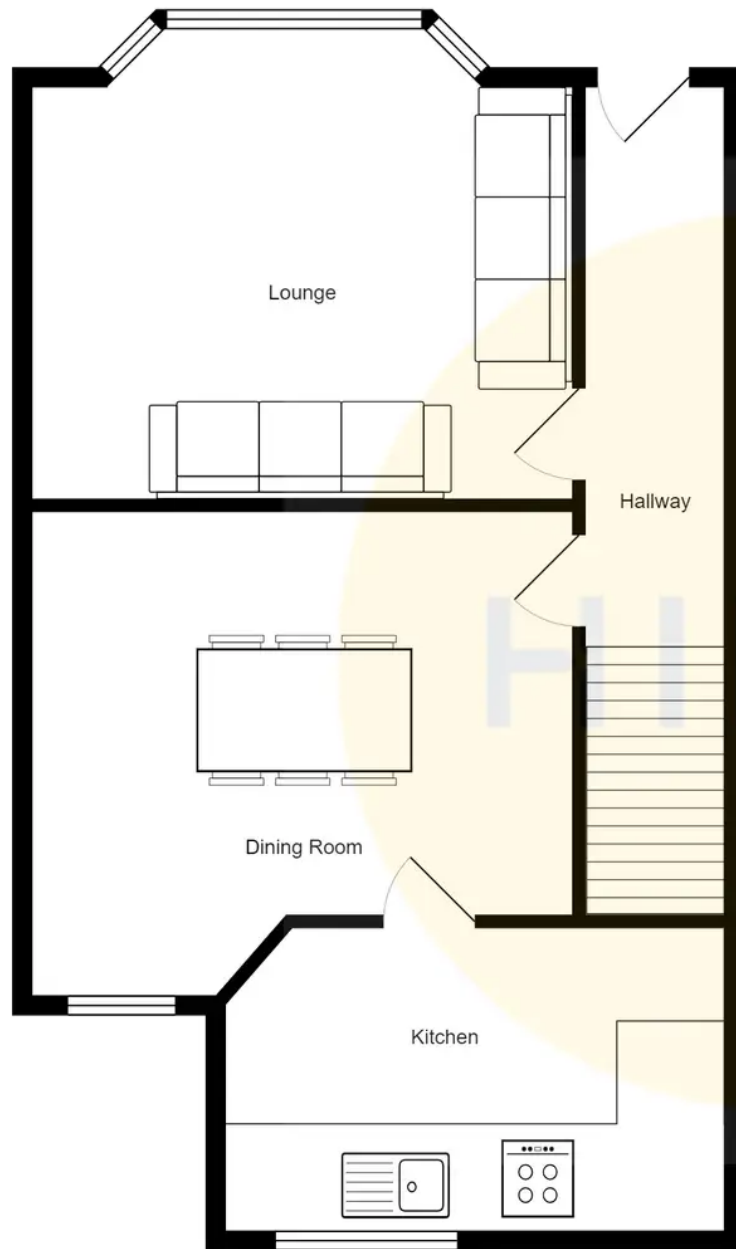
Featuring a three-piece suite including a bath with shower over, hand wash basin and W.C. Complete with ceiling spotlights, double glazed window, part tiled walls and tiled flooring.





HILLS







Hills | Salfords Estate Agent

Hills Residential, Sentinel House Albert Street - M30 0SS

0161 707 4900

sales@hills.agency

www.hills.agency/



THE PROPERTY MISDESCRIPTIONS ACT 1991 The Agent has not tested any apparatus, equipment, fixtures and fittings or services and so cannot verify that they are in working order or fit for the purpose. A Buyer is advised to obtain verification from their Solicitor or Surveyor. References to the Tenure of a Property are based on information supplied by the Seller. The Agent has not had sight of the title documents. A Buyer is advised to obtain verification from their Solicitor. You are advised to check the availability of this property before travelling any distance to view. Every effort and precaution has been made to ensure these particulars are correct and not misleading but their accuracy is not guaranteed nor do they form part of any contract. If there is any point which is of particular importance to you, please contact us and we will provide any information you require. This is advisable, particularly if you intend to travel some distance to view the property. The mention of any appliances and services within these details does not imply that they are in full and efficient working order. These particulars are in draft form awaiting Vendors confirmation of their accuracy. These details must therefore be taken as a guide only.