



Trafford Road, Eccles

Manchester



In Excess of £220,000



# Trafford Road

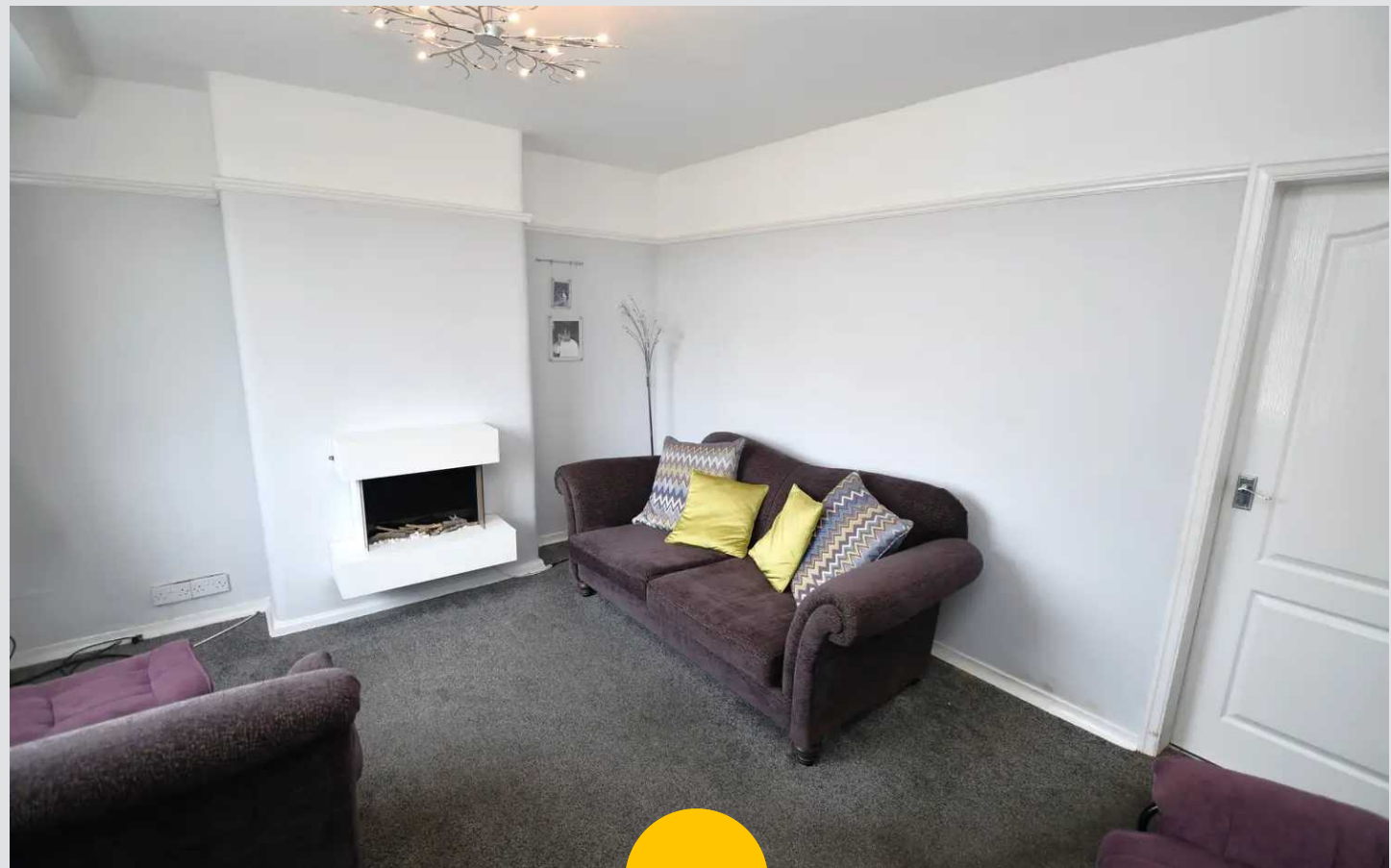
Eccles, Manchester

Brilliant three Bed End of Terrace with spacious corner plot & no vendor chain. Family lounge, modern kitchen/dining, conservatory, three bedrooms, gated parking, sun-drenched garden. Convenient location for amenities & transport. Ideal for first-time buyers or families. Modern living in an enviable location. Contact for viewing today.

Council Tax band: B

Tenure: Freehold

- End of Terrace Property Occupying a Generous Corner Plot
- Offered with No Vendor Chain
- Welcoming Family Lounge & Conservatory to the Rear
- Modern Fitted Kitchen & Dining Space
- Three Bedrooms
- Gated Off Road Parking & Sun Drenched Rear Garden
- Excellently Positioned Close to Amenities & Transport Links
- Perfect for both First Time Buyers & Families Alike



### Entrance Hallway

Complete with a ceiling light point, wall mounted radiator and carpet flooring.

### Lounge

14' 1" x 11' 5" (4.30m x 3.48m)

Complete with a ceiling light point, double glazed window and wall mounted radiator. Fitted with carpet flooring.

### Kitchen / Diner

17' 2" x 9' 3" (5.24m x 2.82m)

Featuring complementary fitted units with integral hob and oven. Space for fridge freezer, washer and dryer. Complete with ceiling spotlights, wall mounted radiator and cushioned flooring.

### Conservatory

9' 10" x 9' 5" (2.99m x 2.88m)

Complete with a wall light point, wall mounted radiator and cushioned flooring.

### Landing

Complete with a ceiling light point, double glazed window and carpet flooring.

### Bedroom One

11' 7" x 7' 9" (3.52m x 2.35m)

Featuring fitted furniture. Complete with a ceiling light point, double glazed window and wall mounted radiator. Fitted with carpet flooring.

### Bedroom Two

9' 9" x 9' 4" (2.97m x 2.85m)

Complete with a ceiling light point, double glazed window and wall mounted radiator. Fitted with carpet flooring.

### Bedroom Three

9' 9" x 6' 5" (2.97m x 1.95m)

Complete with a ceiling light point, double glazed window and wall mounted radiator. Fitted with carpet flooring.





**Bathroom**

7' 0" x 5' 1" (2.13m x 1.56m)

Featuring a three-piece suite including corner bath with shower over, hand wash basin and W.C. Fitted with tiled walls and cushioned flooring.

**External**

To the front and side of the property is a driveway providing off-road parking for several cars. To the rear of the property is a large plot with grass and paving.



HILLS









HILLS

## Hills | Salfords Estate Agent

Hills Residential, Sentinel House Albert Street - M30 0SS

0161 707 4900

[sales@hills.agency](mailto:sales@hills.agency)

[www.hills.agency/](http://www.hills.agency/)



THE PROPERTY MISDESCRIPTIONS ACT 1991 The Agent has not tested any apparatus, equipment, fixtures and fittings or services and so cannot verify that they are in working order or fit for the purpose. A Buyer is advised to obtain verification from their Solicitor or Surveyor. References to the Tenure of a Property are based on information supplied by the Seller. The Agent has not had sight of the title documents. A Buyer is advised to obtain verification from their Solicitor. You are advised to check the availability of this property before travelling any distance to view. Every effort and precaution has been made to ensure these particulars are correct and not misleading but their accuracy is not guaranteed nor do they form part of any contract. If there is any point which is of particular importance to you, please contact us and we will provide any information you require. This is advisable, particularly if you intend to travel some distance to view the property. The mention of any appliances and services within these details does not imply that they are in full and efficient working order. These particulars are in draft form awaiting Vendors confirmation of their accuracy. These details must therefore be taken as a guide only.