

Gloucester Road, Salford

Salford



11 Gloucester Road

Salford, Salford

Council Tax band: B

Tenure: Leasehold



Entrance Hallway

Ceiling light point

Lounge

16' 0" x 10' 9" (4.87m x 3.28m)

Ceiling light point, three double-glazed windows and a wall-mounted radiator

Dining Room

13' 11" x 13' 11" (4.24m x 4.24m)

Ceiling light point, a double-glazed window and a wall-mounted radiator

Kitchen

13' 4" x 8' 0" (4.07m x 2.45m)

Fitted with a range of wall and base units with complimentary roll top work surfaces and integrated stainless steel sink and drainer unit. Integrated hob and oven, space for washer and dryer. Ceiling light point and two double-glazed windows.

Landing

Ceiling light point

Bedroom One

13' 0" x 11' 11" (3.95m x 3.64m)

Ceiling light point, double-glazed bay window, a double-glazed window and a wall-mounted radiator

Ensuite

5' 9" x 5' 1" (1.76m x 1.54m)

Fitted three piece suite comprising of low level WC, pedestal hand wash basin and corner shower. Ceiling spotlights and a wall-mounted radiator

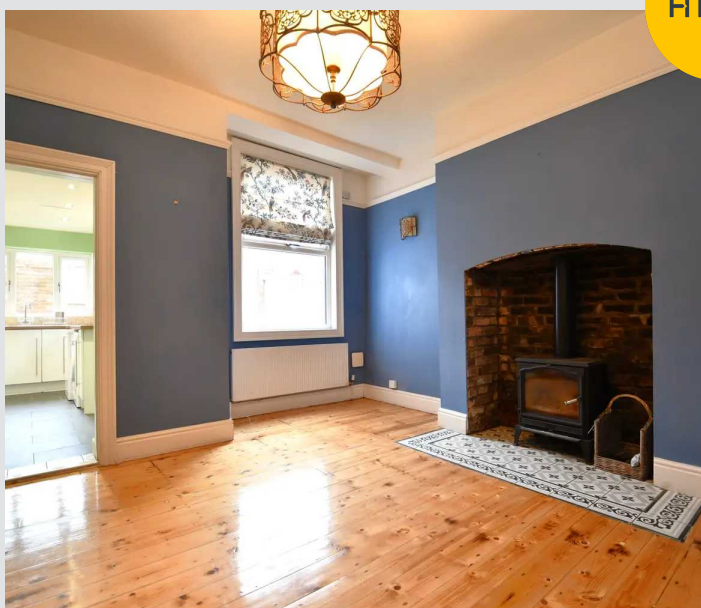
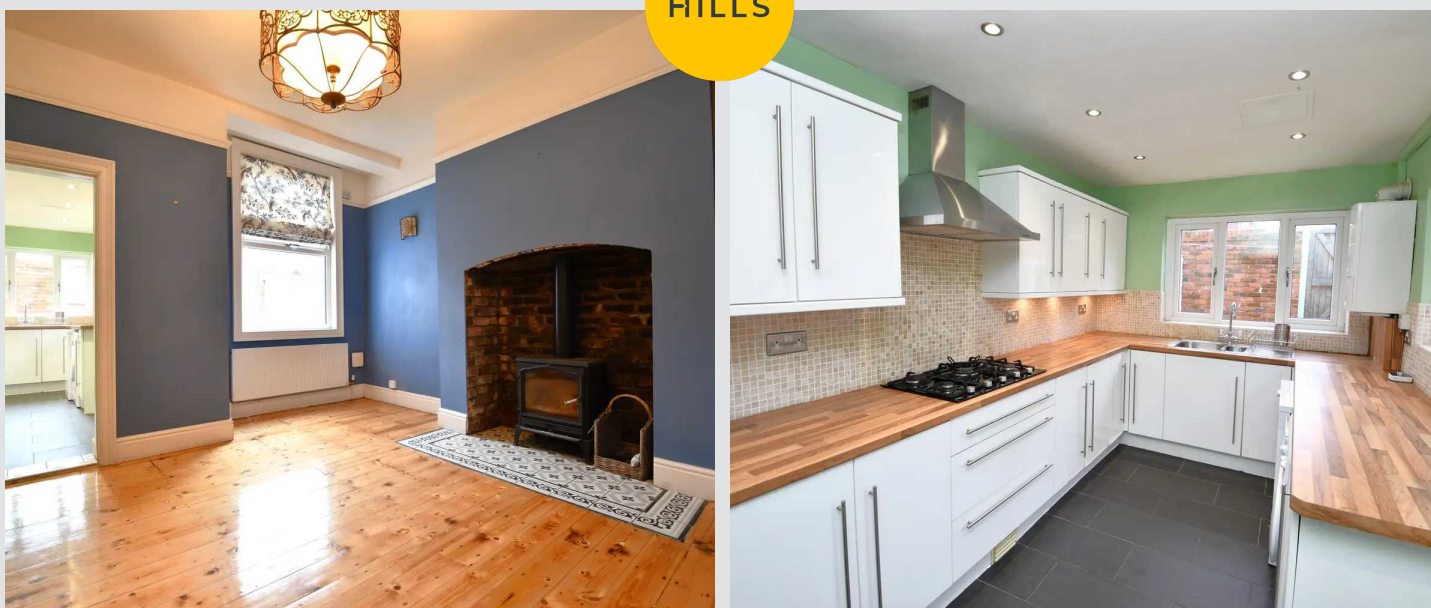
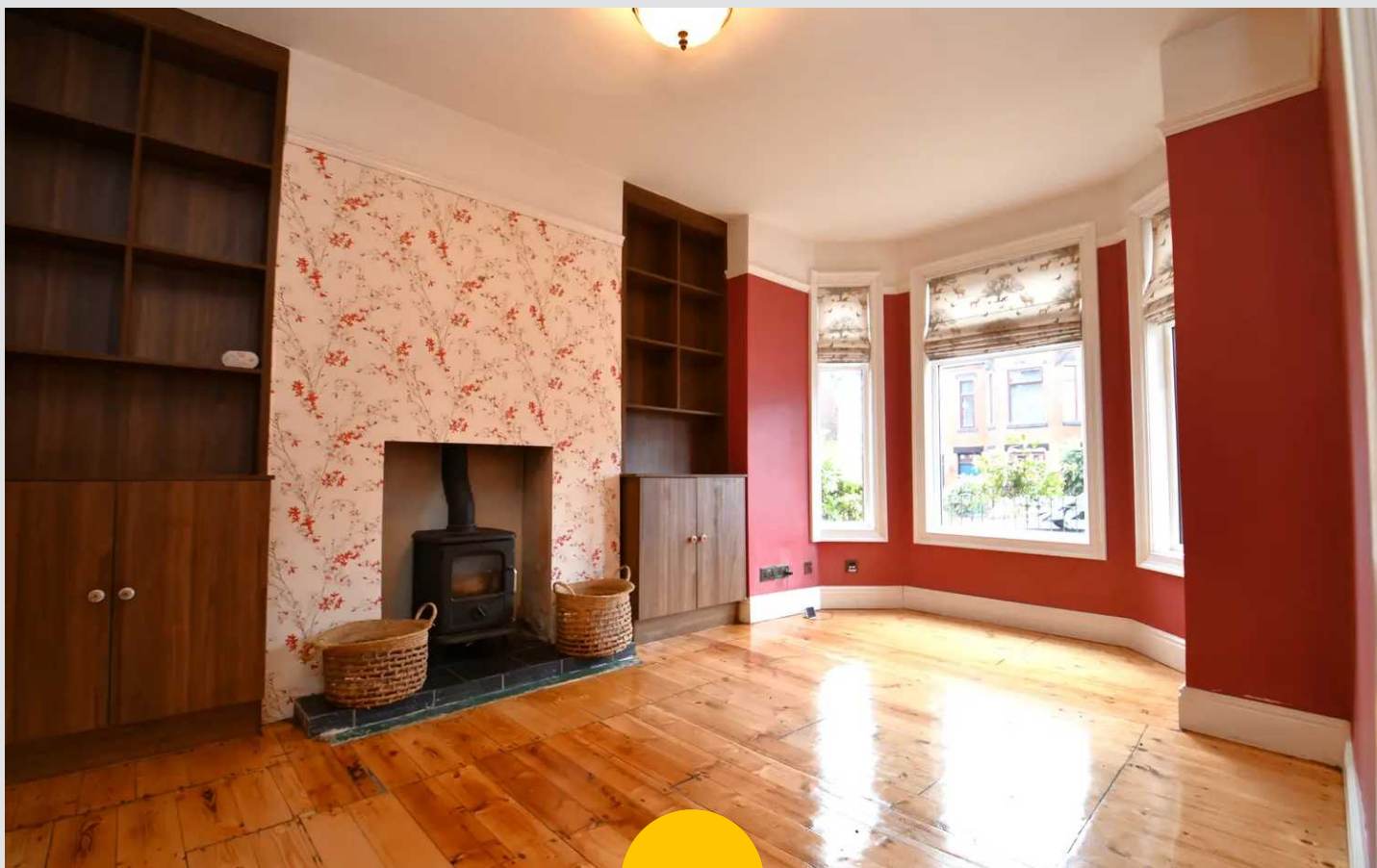
Bedroom Two

11' 9" x 9' 8" (3.59m x 2.94m)

Ceiling light point, a double-glazed window and a wall-mounted radiator

Externally

Low-maintenance courtyard gardens to the front and rear. There is also a brick built outbuilding for storage to the rear.



Entrance Hallway

Ceiling light point

Lounge

16' 0" x 10' 9" (4.87m x 3.28m)

Ceiling light point, three double-glazed windows and a wall-mounted radiator

Dining Room

13' 11" x 13' 11" (4.24m x 4.24m)

Ceiling light point, a double-glazed window and a wall-mounted radiator

Kitchen

13' 4" x 8' 0" (4.07m x 2.45m)

Fitted with a range of wall and base units with complimentary roll top work surfaces and integrated stainless steel sink and drainer unit. Integrated hob and oven, space for washer and dryer. Ceiling light point and two double-glazed windows.

Landing

Ceiling light point

Bedroom One

13' 0" x 11' 11" (3.95m x 3.64m)

Ceiling light point, double-glazed bay window, a double-glazed window and a wall-mounted radiator

Ensuite

5' 9" x 5' 1" (1.76m x 1.54m)

Fitted three piece suite comprising of low level WC, pedestal hand wash basin and corner shower. Ceiling spotlights and a wall-mounted radiator

Bedroom Two

11' 9" x 9' 8" (3.59m x 2.94m)

Ceiling light point, a double-glazed window and a wall-mounted radiator

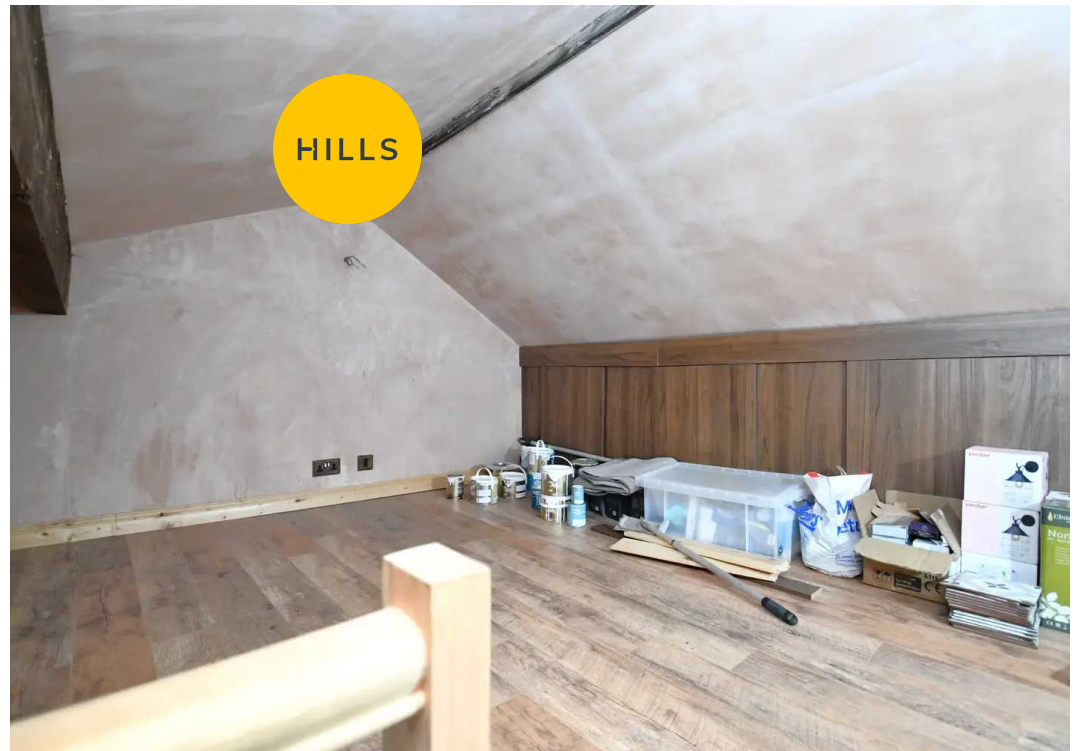
Externally

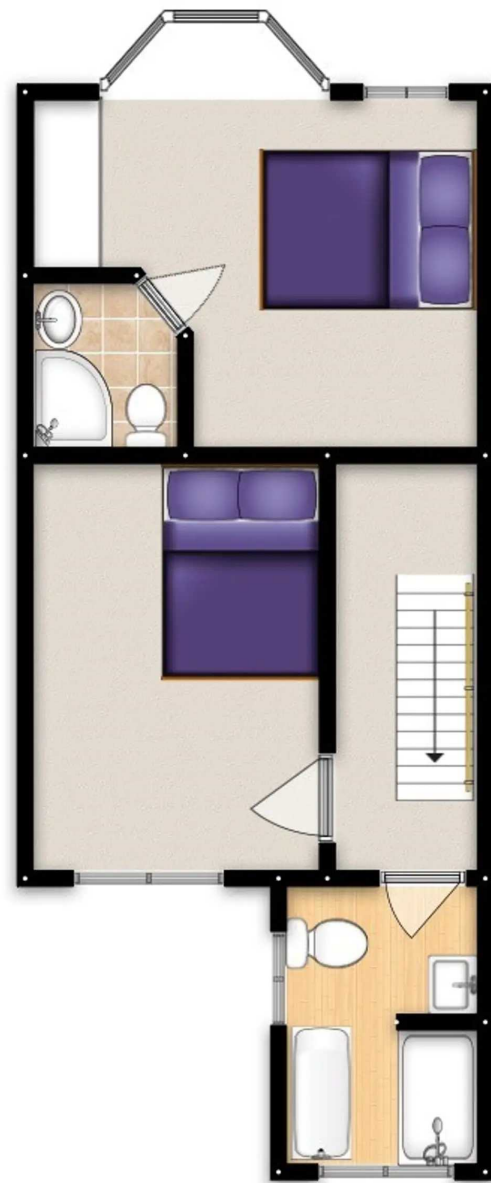
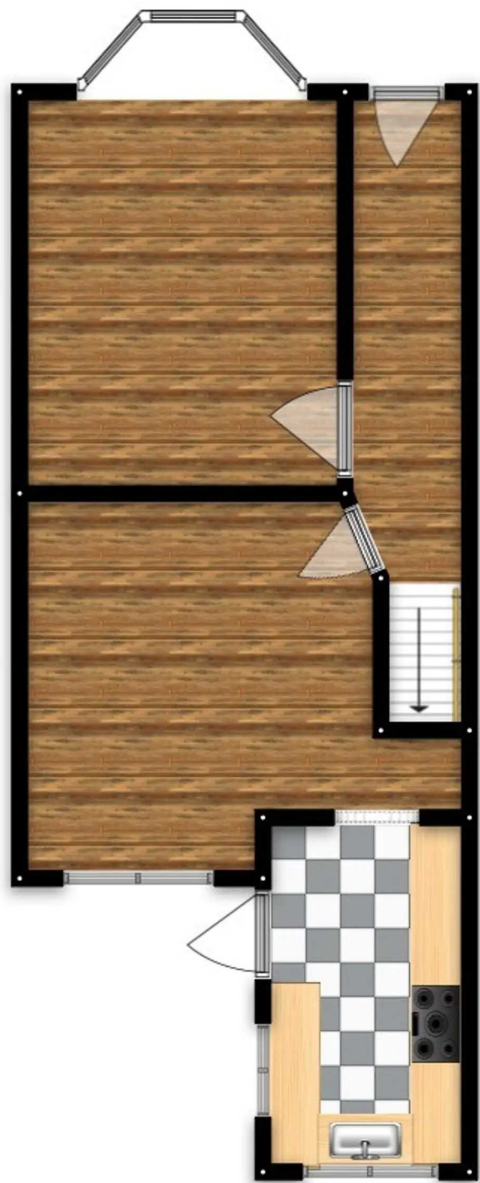
Low-maintenance courtyard gardens to the front and rear. There is also a brick built outbuilding for storage to the rear.



HILLS









Hills | Salfords Estate Agent

Hills Residential, Sentinel House Albert Street - M30 0SS

0161 707 4900

sales@hills.agency

www.hills.agency/



THE PROPERTY MISDESCRIPTIONS ACT 1991 The Agent has not tested any apparatus, equipment, fixtures and fittings or services and so cannot verify that they are in working order or fit for the purpose. A Buyer is advised to obtain verification from their Solicitor or Surveyor. References to the Tenure of a Property are based on information supplied by the Seller. The Agent has not had sight of the title documents. A Buyer is advised to obtain verification from their Solicitor. You are advised to check the availability of this property before travelling any distance to view. Every effort and precaution has been made to ensure these particulars are correct and not misleading but their accuracy is not guaranteed nor do they form part of any contract. If there is any point which is of particular importance to you, please contact us and we will provide any information you require. This is advisable, particularly if you intend to travel some distance to view the property. The mention of any appliances and services within these details does not imply that they are in full and efficient working order. These particulars are in draft form awaiting Vendors confirmation of their accuracy. These details must therefore be taken as a guide only.