

Seedley Terrace, Salford

Salford



£220,000

Seedley Terrace

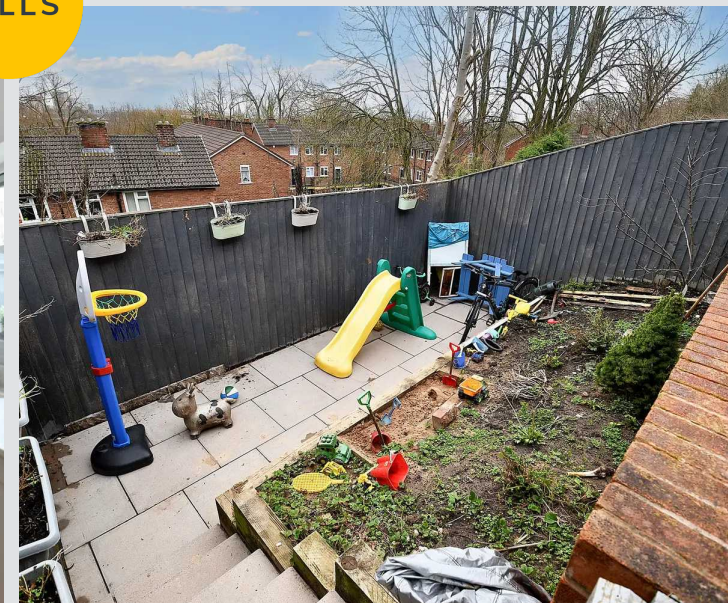
Salford

This stylish three bedroom terraced property is located just a stone's throw away from Buile Hill Park. Tastefully decorated throughout, the property features a modern kitchen diner, three generously sized bedrooms and a double driveway to the front, providing ample off-road parking

Council Tax band: A

Tenure: Leasehold

- Stylish Three Bedroom Terraced Property
- Renovated Throughout to a Good Standard
- Spacious Family Lounge
- Modern Fitted Kitchen Diner with Patio Doors to the Rear
- Three Generously Sized Bedrooms
- Modern Three-Piece Family Bathroom
- Double Driveway to the Front Providing Off-Road Parking
- Low-Maintenance, Tiered, South-East Facing Garden to the Rear
- Just a Stone's Throw from Buile Hill Park and Within Easy Access of Amenities and Schooling
- Close to Excellent Transport Links Throughout Manchester, Viewing is Highly Recommended!



Entrance Hallway

Complete with a composite front door and ceiling light point.

Lounge

13' 1" x 14' 2" (3.99m x 4.32m)

Complete with a ceiling light point, double glazed window and wall mounted radiator.

Kitchen

16' 4" x 10' 11" (4.98m x 3.34m)

Featuring complementary wall and base units with integral hob, oven, microwave and fridge freezer.

Dishwasher and washing machine. Complete with ceiling spotlights and double glazed patio doors.

Landing

Complete with ceiling light point and carpet flooring.

Bedroom One

12' 1" x 13' 3" (3.68m x 4.05m)

Complete with a ceiling light point, double glazed window and wall mounted radiator. Fitted with carpet flooring.

Bedroom Two

12' 2" x 8' 9" (3.72m x 2.67m)

Complete with a ceiling light point, double glazed window and wall mounted radiator. Fitted with carpet flooring.

Bathroom

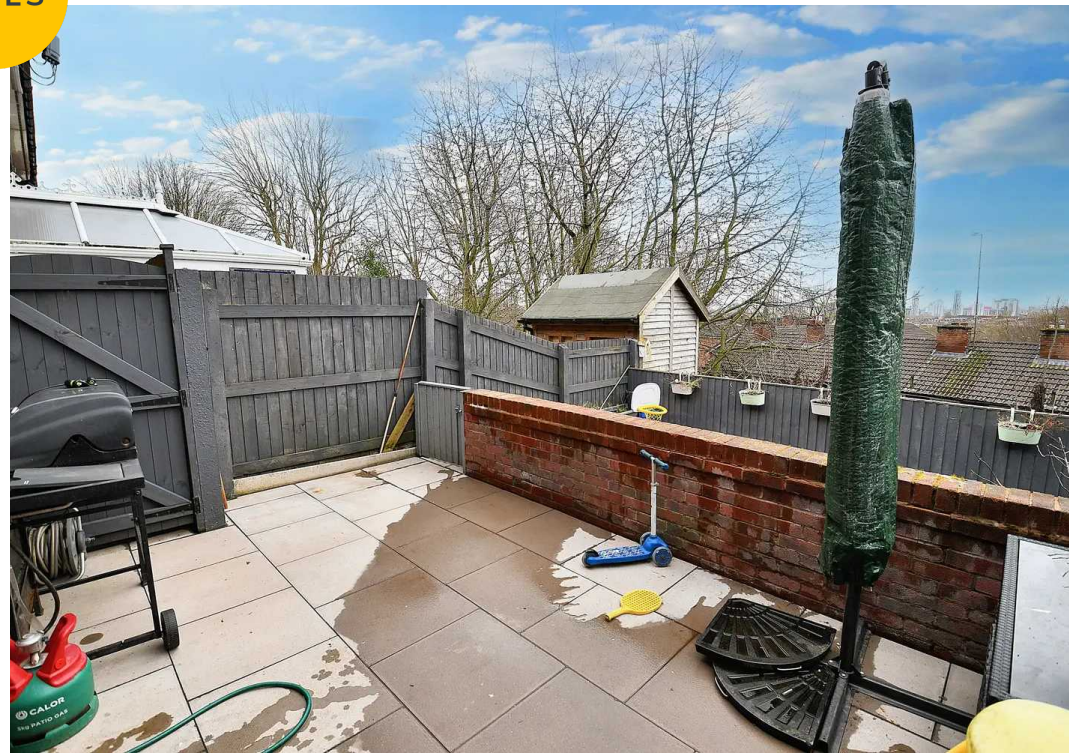
5' 7" x 6' 1" (1.70m x 1.86m)

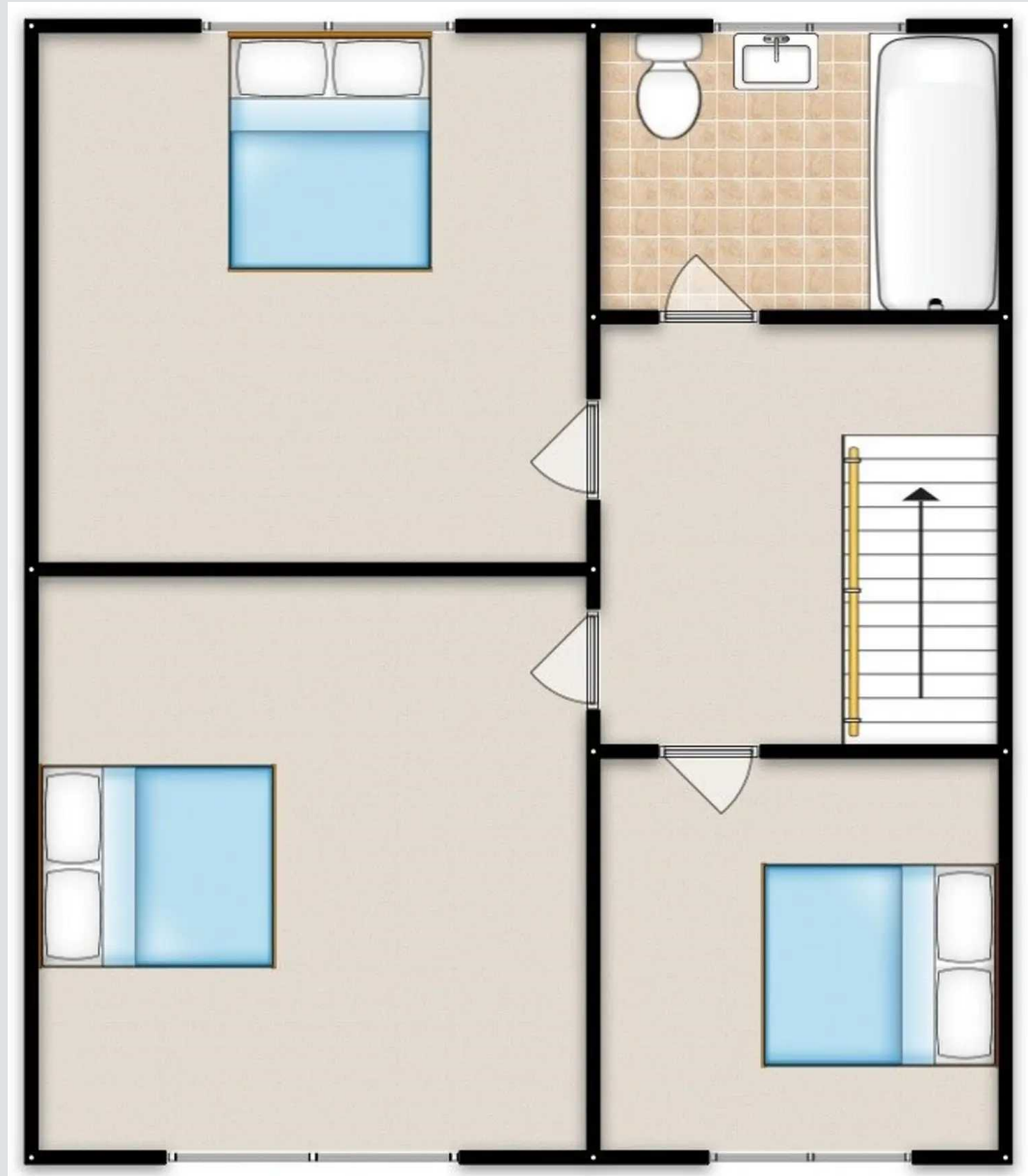
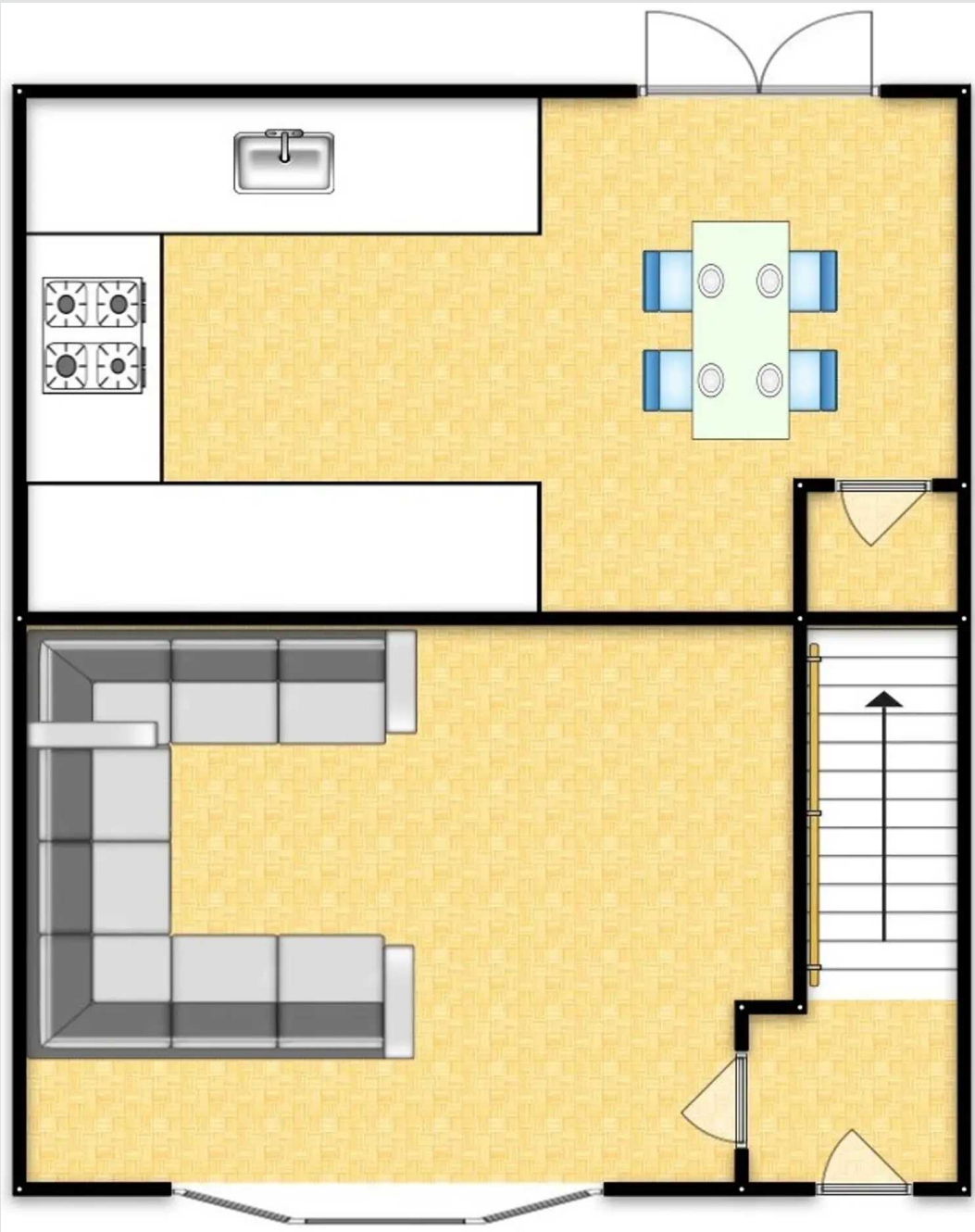
Featuring a three piece suite including bath with shower over, hand wash basin and W.C. Complete with a ceiling light point, double glazed windows and heated towel rail. Fitted with lino flooring.





HILLS







HILLS

Hills | Salfords Estate Agent

Hills Residential, Sentinel House Albert Street - M30 0SS

0161 707 4900

sales@hills.agency

www.hills.agency/



THE PROPERTY MISEDDESCRIPTIONS ACT 1991 The Agent has not tested any apparatus, equipment, fixtures and fittings or services and so cannot verify that they are in working order or fit for the purpose. A Buyer is advised to obtain verification from their Solicitor or Surveyor. References to the Tenure of a Property are based on information supplied by the Seller. The Agent has not had sight of the title documents. A Buyer is advised to obtain verification from their Solicitor. You are advised to check the availability of this property before travelling any distance to view. Every effort and precaution has been made to ensure these particulars are correct and not misleading but their accuracy is not guaranteed nor do they form part of any contract. If there is any point which is of particular importance to you, please contact us and we will provide any information you require. This is advisable, particularly if you intend to travel some distance to view the property. The mention of any appliances and services within these details does not imply that they are in full and efficient working order. These particulars are in draft form awaiting Vendors confirmation of their accuracy. These details must therefore be taken as a guide only.