



Devonshire Road, Salford

Salford



£325,000

Devonshire Road

Salford

****RARE OPPORTUNITY**** Have you been waiting for a bungalow to come up in Salford M6? This two double bedroom, detached bungalow could be just what you are looking for! Featuring a generous plot with a driveway and a garage to the side, along with a large mature garden to the rear.

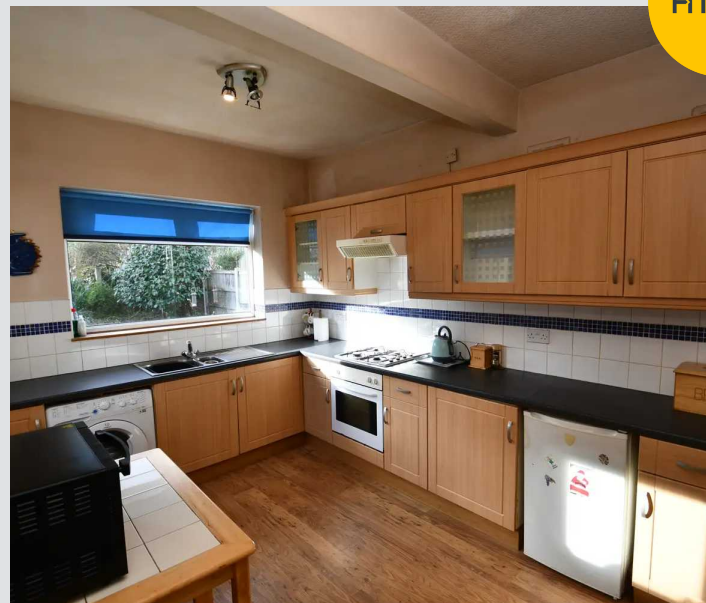
Council Tax band: C

Tenure: Freehold

- Two Double Bedroom Detached Bungalow
- Rare Opportunity to Secure a Bungalow in Salford M6
- Bay-Fronted Lounge and a Separate Dining Room
- Large, Modern Fitted Kitchen Diner
- Situated Just a Stone's Throw from Salford Royal Hospital and Close to Local Amenities
- Close to Excellent Transport Links into Salford Quays, Media City and Manchester City Centre
- Ideal for Someone Looking to Put Their Own Stamp on a Property
- Garden to the Front and a Generous, Mature Garden to the Rear with Laid-to-Lawn Grass, Paving, Trees and Shrubbery
- Driveway and a Garage Providing Off-Road Parking to the Side
- Viewing is Highly Recommended to Appreciate the Size and Potential of this Property!



HILLS



Entrance Hallway

Complete with a ceiling light point, wall mounted radiator and laminate flooring.

Lounge

12' 11" x 12' 10" (3.93m x 3.91m)

Complete with a ceiling light point, double glazed bay window, single glazed window and wall mounted radiator. Fitted with carpet flooring.

Kitchen Diner

13' 4" x 9' 1" (4.07m x 2.76m)

Featuring complementary fitted units with an integral hob and oven. Space for a washer. Complete with two ceiling light points and two double glazed windows.

Dining Room

9' 11" x 9' 6" (3.02m x 2.90m)

Complete with a ceiling light point, wall mounted radiator and patio doors.

Storage Cupboard

7' 3" x 2' 6" (2.21m x 0.76m)

Complete with a ceiling light point, single glazed window and wooden flooring.

Bedroom One

13' 5" x 10' 11" (4.08m x 3.32m)

Complete with a ceiling light point, double glazed window and wall mounted radiator. Fitted with carpet flooring.



HILLS



Bedroom Two

12' 3" x 10' 10" (3.73m x 3.31m)

Complete with a ceiling light point, double glazed bay window and wall mounted radiator. Fitted with carpet flooring.

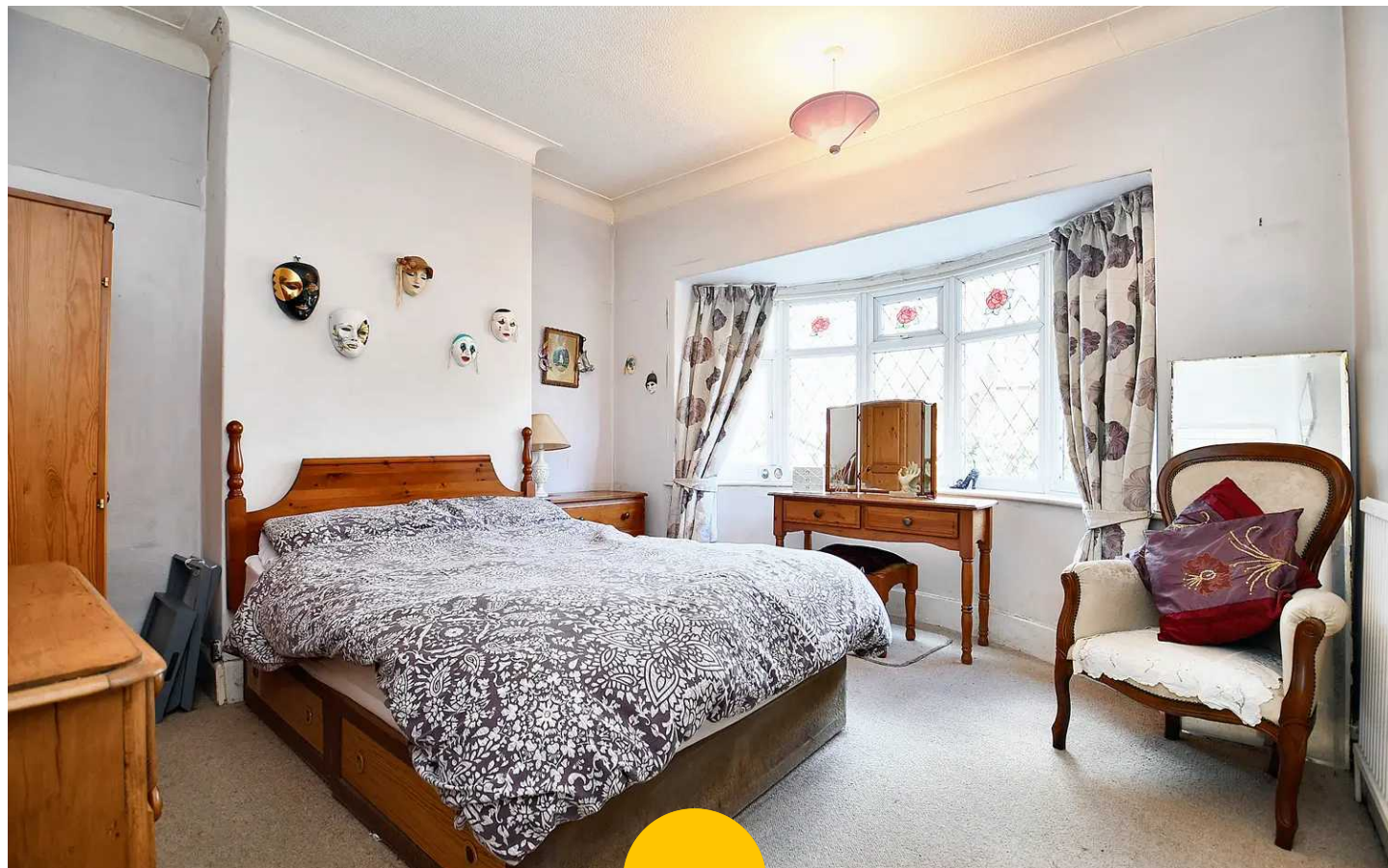
Bathroom

8' 10" x 5' 11" (2.70m x 1.81m)

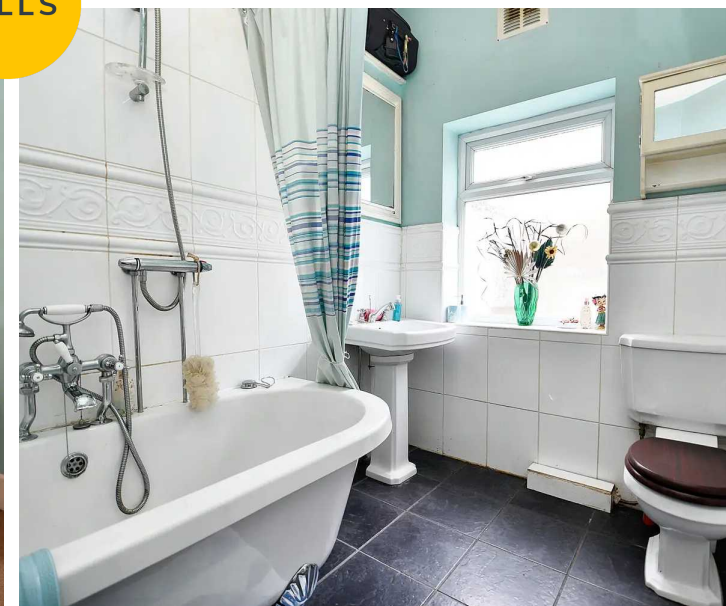
Featuring a three-piece suite including a bath with shower over, hand wash basin and W.C. Complete with a ceiling light point, double glazed window, tiled walls and flooring.

External

To the front of the property is a mature garden with a driveway and garage providing off-road parking to the side. To the rear of the property is a beautifully presented garden with laid-to-lawn grass, paving, mature trees and shrubbery.



HILLS







Hills | Salfords Estate Agent

Hills Residential, Sentinel House Albert Street – M30 0SS

0161 707 4900

sales@hills.agency

www.hills.agency/



THE PROPERTY MISDESCRIPTIONS ACT 1991 The Agent has not tested any apparatus, equipment, fixtures and fittings or services and so cannot verify that they are in working order or fit for the purpose. A Buyer is advised to obtain verification from their Solicitor or Surveyor. References to the Tenure of a Property are based on information supplied by the Seller. The Agent has not had sight of the title documents. A Buyer is advised to obtain verification from their Solicitor. You are advised to check the availability of this property before travelling any distance to view. Every effort and precaution has been made to ensure these particulars are correct and not misleading but their accuracy is not guaranteed nor do they form part of any contract. If there is any point which is of particular importance to you, please contact us and we will provide any information you require. This is advisable, particularly if you intend to travel some distance to view the property. The mention of any appliances and services within these details does not imply that they are in full and efficient working order. These particulars are in draft form awaiting Vendors confirmation of their accuracy. These details must therefore be taken as a guide only.