

Thorp Street, Eccles

Manchester



£210,000

Thorp Street

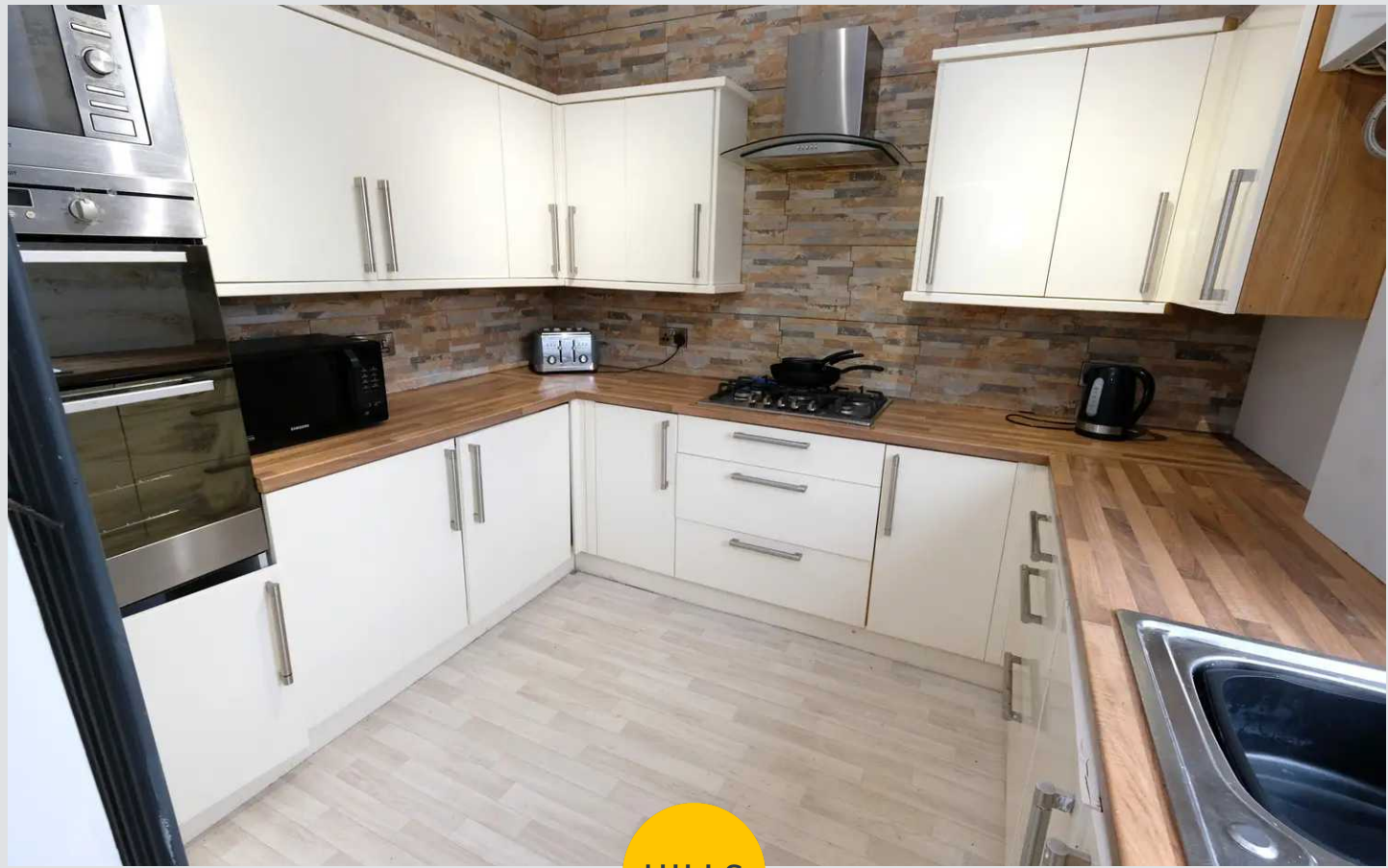
Eccles, Manchester

****Bifolding doors to the rear**** Immaculate three bedroom end terrace that perfectly blends both period and contemporary styles, with modern features complementing the lovely high ceilings and generously sized rooms throughout.

Council Tax band: A

Tenure: Freehold

- Immaculately Presented, Three Bedroom End Terraced Property
- Lovely High Ceilings and Large Room Sizes in Keeping with the Period Style of the Property
- Tastefully Decorated Throughout to a High Standard
- Bay-Fronted Lounge and a Spacious Dining Room that Benefits from Bifolding Doors to the Rear Garden
- Modern Fitted Kitchen and a Contemporary Bathroom
- Benefits from Brick-Built Outbuildings Providing Ample Storage
- Potential for Use as Off-Road Parking to the Rear, with Double Gates Leading to a Driveway in the Rear Garden
- Within Walking Distance of Both Eccles Town Centre and the Trafford Centre, Providing Access to a Range of Amenities
- Close to Excellent Transport Links Throughout Manchester, Including into Salford Quays, Media City and Manchester City Centre
- Viewing is Highly Recommended!



Entrance Hallway

A welcoming entrance hallway entered via a hardwood front door. Complete with a ceiling light point, wall mounted radiator and laminate flooring.

Reception Room One

12' 0" x 13' 1" (3.67m x 3.98m)

A spacious reception room complete with two ceiling light points, double glazed bay window and wall mounted radiator. Fitted with laminate flooring.

Reception Room Two

13' 0" x 11' 11" (3.95m x 3.64m)

Complete with a ceiling light point, two wall light points, wall mounted radiator and bi-folding doors to the rear. Fitted with laminate flooring.

Kitchen

9' 8" x 8' 2" (2.94m x 2.49m)

A contemporary kitchen featuring fitted wall and base units with integral double oven, microwave and hob. Complete with a ceiling light point, double glazed window and wall mounted radiator. Fitted with lino flooring.

Landing

Complete with a ceiling light point and carpet flooring.

Bedroom One

12' 2" x 13' 0" (3.71m x 3.96m)

Complete with a ceiling light point, double glazed window and wall mounted radiator. Fitted with carpet flooring.

Bedroom Two

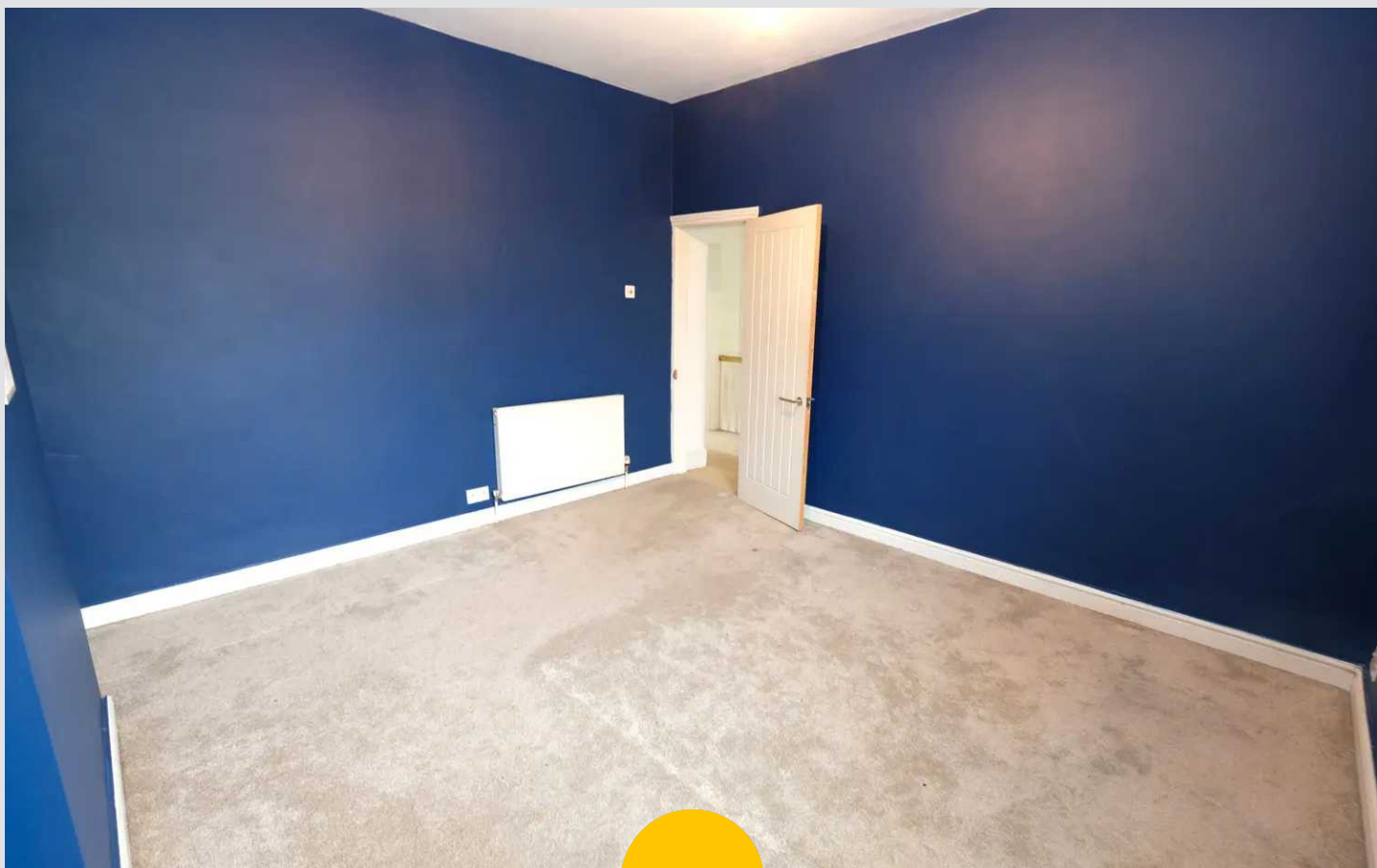
10' 8" x 11' 11" (3.26m x 3.64m)

Complete with a ceiling light point, double glazed window and wall mounted radiator. Fitted with carpet flooring.

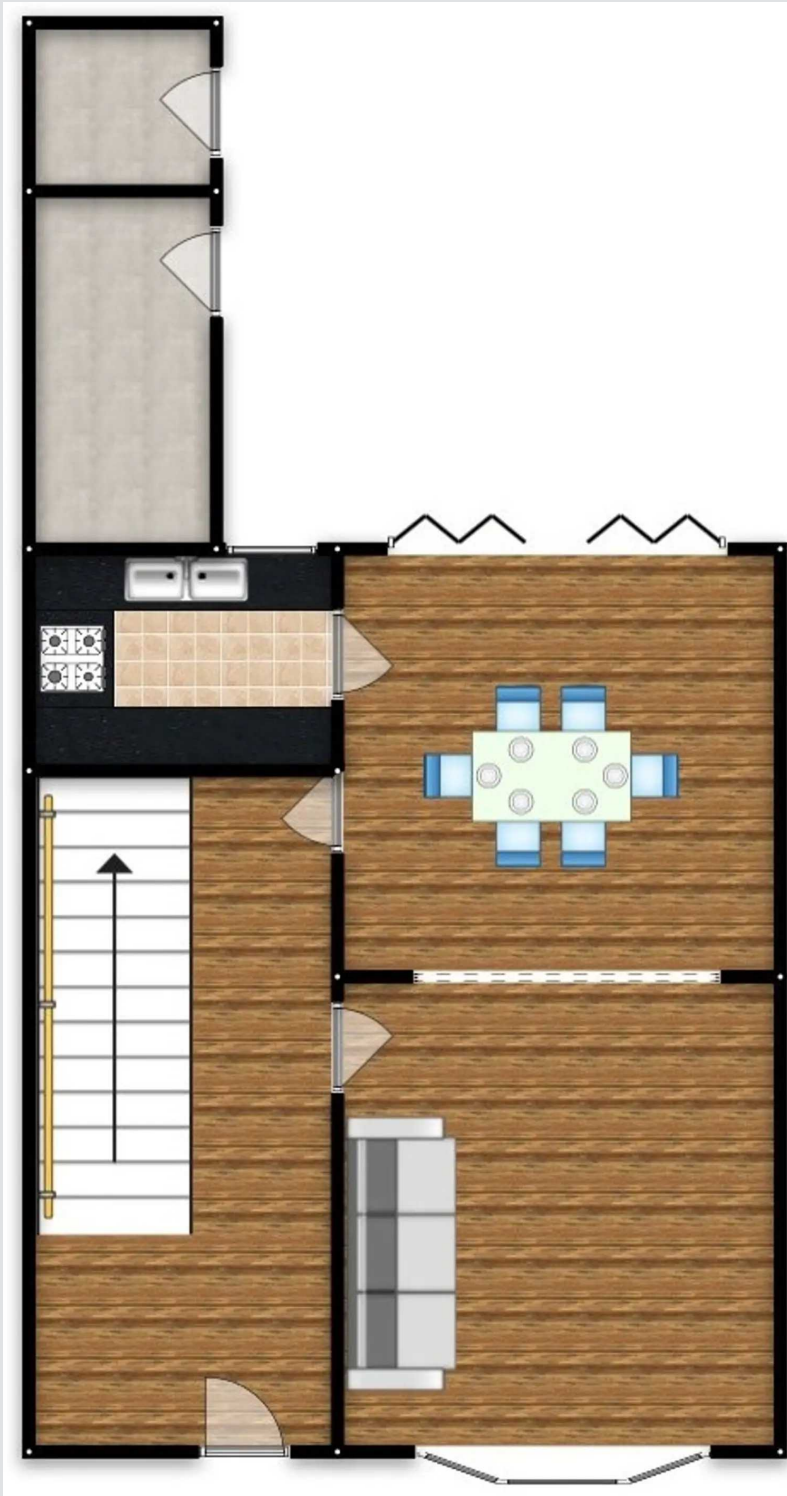
Bedroom Three

8' 5" x 9' 11" (2.57m x 3.01m)

Complete with a ceiling light point, double glazed window and wall mounted radiator. Fitted with carpet flooring.









HILLS

Hills | Salfords Estate Agent

Hills Residential, Sentinel House Albert Street - M30 0SS

0161 707 4900

sales@hills.agency

www.hills.agency/



THE PROPERTY MISDESCRIPTIONS ACT 1991 The Agent has not tested any apparatus, equipment, fixtures and fittings or services and so cannot verify that they are in working order or fit for the purpose. A Buyer is advised to obtain verification from their Solicitor or Surveyor. References to the Tenure of a Property are based on information supplied by the Seller. The Agent has not had sight of the title documents. A Buyer is advised to obtain verification from their Solicitor. You are advised to check the availability of this property before travelling any distance to view. Every effort and precaution has been made to ensure these particulars are correct and not misleading but their accuracy is not guaranteed nor do they form part of any contract. If there is any point which is of particular importance to you, please contact us and we will provide any information you require. This is advisable, particularly if you intend to travel some distance to view the property. The mention of any appliances and services within these details does not imply that they are in full and efficient working order. These particulars are in draft form awaiting Vendors confirmation of their accuracy. These details must therefore be taken as a guide only.