



Horsham Street, Salford

Salford



£190,000

Horsham Street

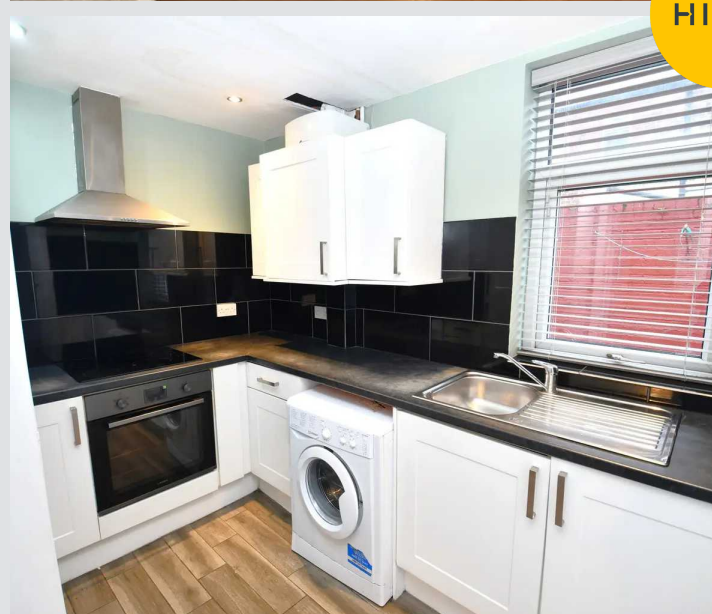
Salford, Salford

Superb three-bedroom terraced family home, conveniently positioned within walking distance of the vibrant Salford Quays and Media City, both renowned for their bustling array of bars, shops, and restaurants

Council Tax band: A

Tenure: Freehold

- Three Bedroom Terraced Family Home
- Within Walking Distance of Salford Quays and Media City, which is Host to a Fine Array of Bars, Shops and Restaurants
- Two Spacious Reception Rooms Separated via an Archway
- Modern Fitted Kitchen, a Bathroom and a Separate W/C
- Low-Maintenance Courtyard Garden to the Rear
- Just a Short Walk from Langworthy Tram Stop, with Direct Access into Manchester City Centre
- Conveniently Located Near Local Schooling, Several Well-Kept Parks and Amenities
- Ideal First Time Home or Investment
- Early Viewing is Essential!



Entrance Hallway

Ceiling light point, wall mounted radiator and laminate flooring.

Lounge

11' 3" x 11' 0" (3.44m x 3.35m)

Ceiling light point, double glazed window, wall mounted radiator and laminate flooring

Dining room

12' 8" x 11' 9" (3.85m x 3.59m)

Ceiling light point, double glazed window, wall mounted radiator and laminate flooring

Kitchen

9' 9" x 7' 3" (2.98m x 2.20m)

Spotlights, double glazed, a range of wall and base units with integrated oven and hob, fridge freezer and space of washing machine with tiled floors.

Landing

Ceiling light point and carpet flooring

Bedroom one

11' 0" x 9' 10" (3.36m x 2.99m)

Ceiling light point, double glazed window, wall mounted radiator and carpet flooring

Bedroom Two

10' 11" x 7' 10" (3.33m x 2.38m)

Ceiling light point, double glazed window, wall mounted radiator and carpet flooring

Bathroom

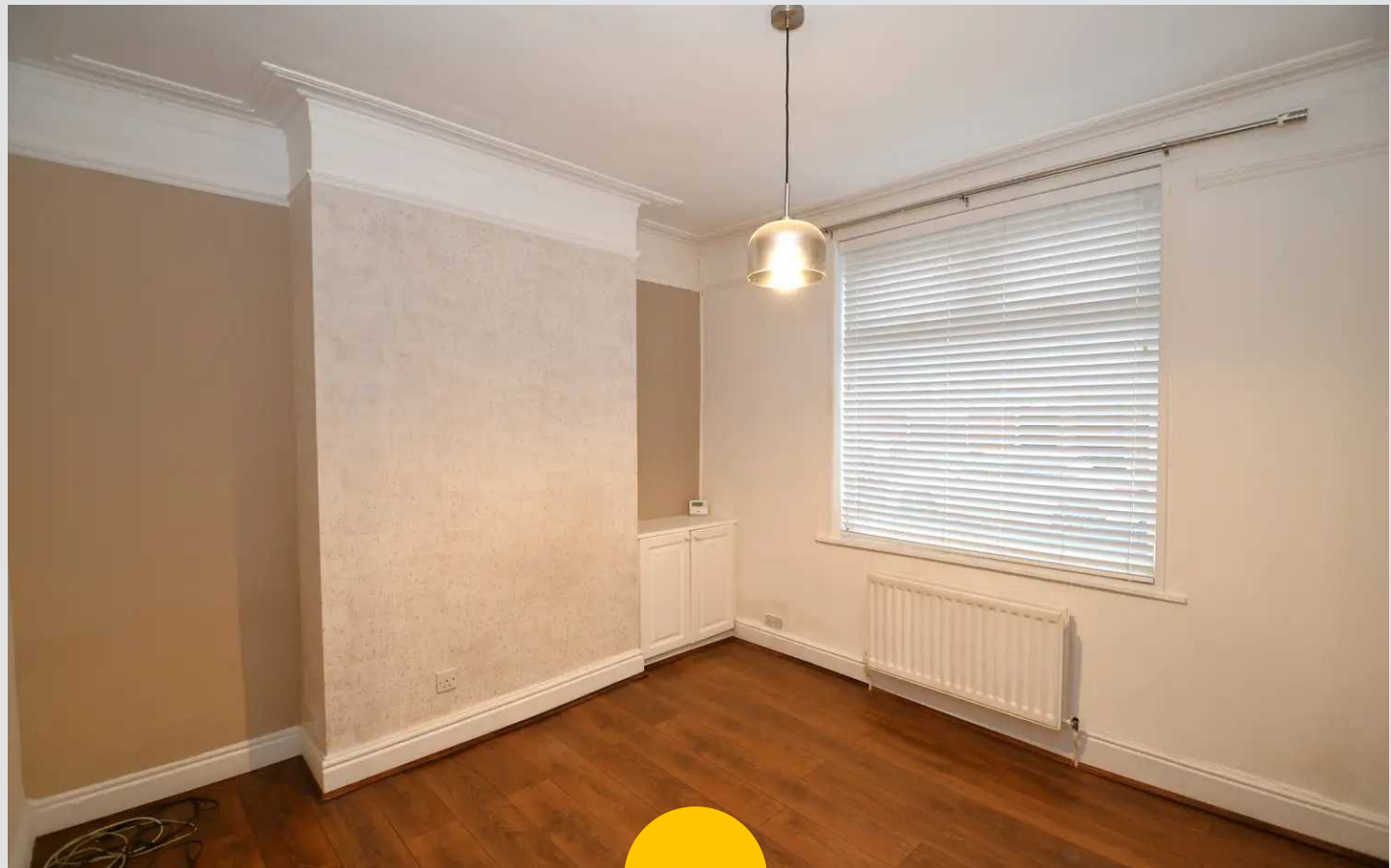
7' 8" x 6' 9" (2.34m x 2.07m)

Ceiling light point, bath, sink double glazed window and tiled flooring.

Bedroom Three

7' 8" x 6' 9" (2.34m x 2.06m)

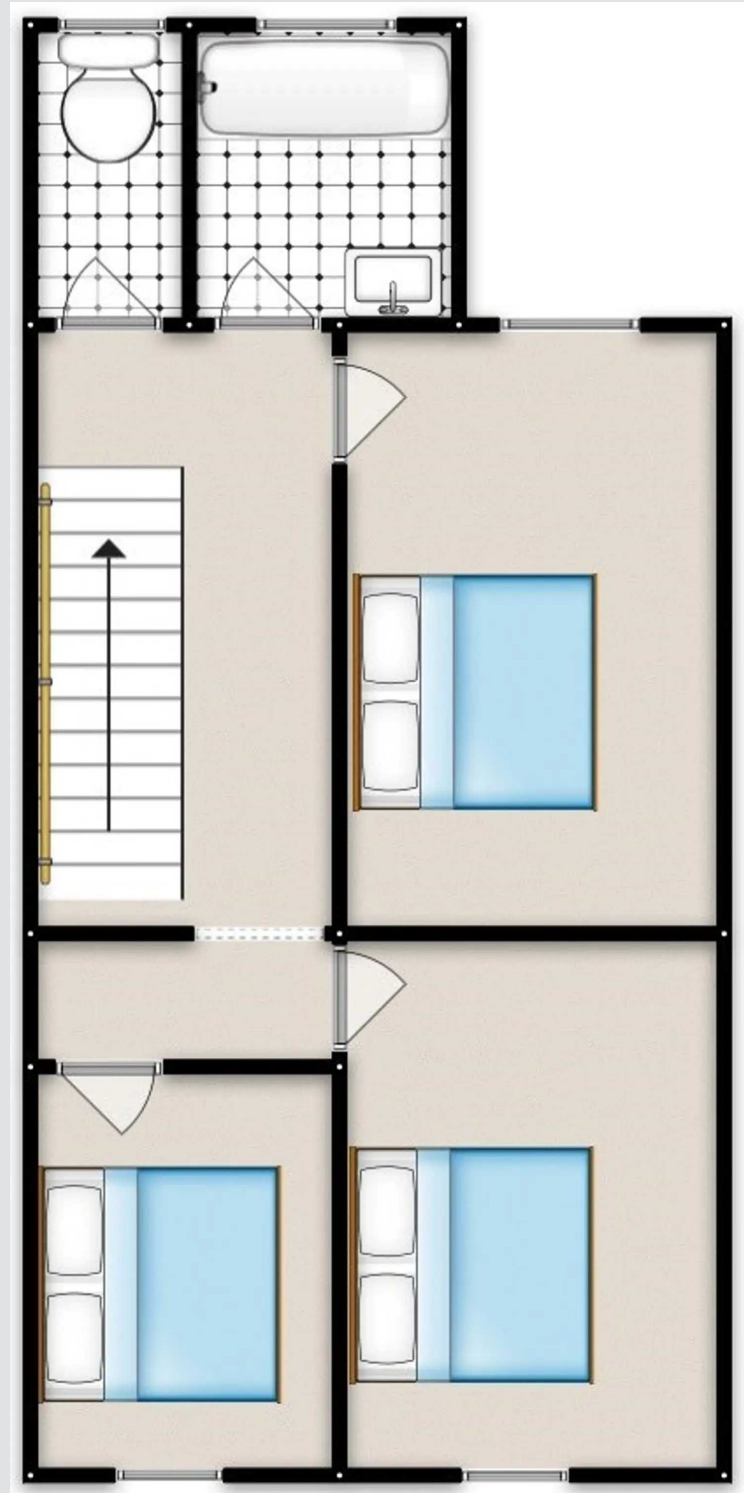
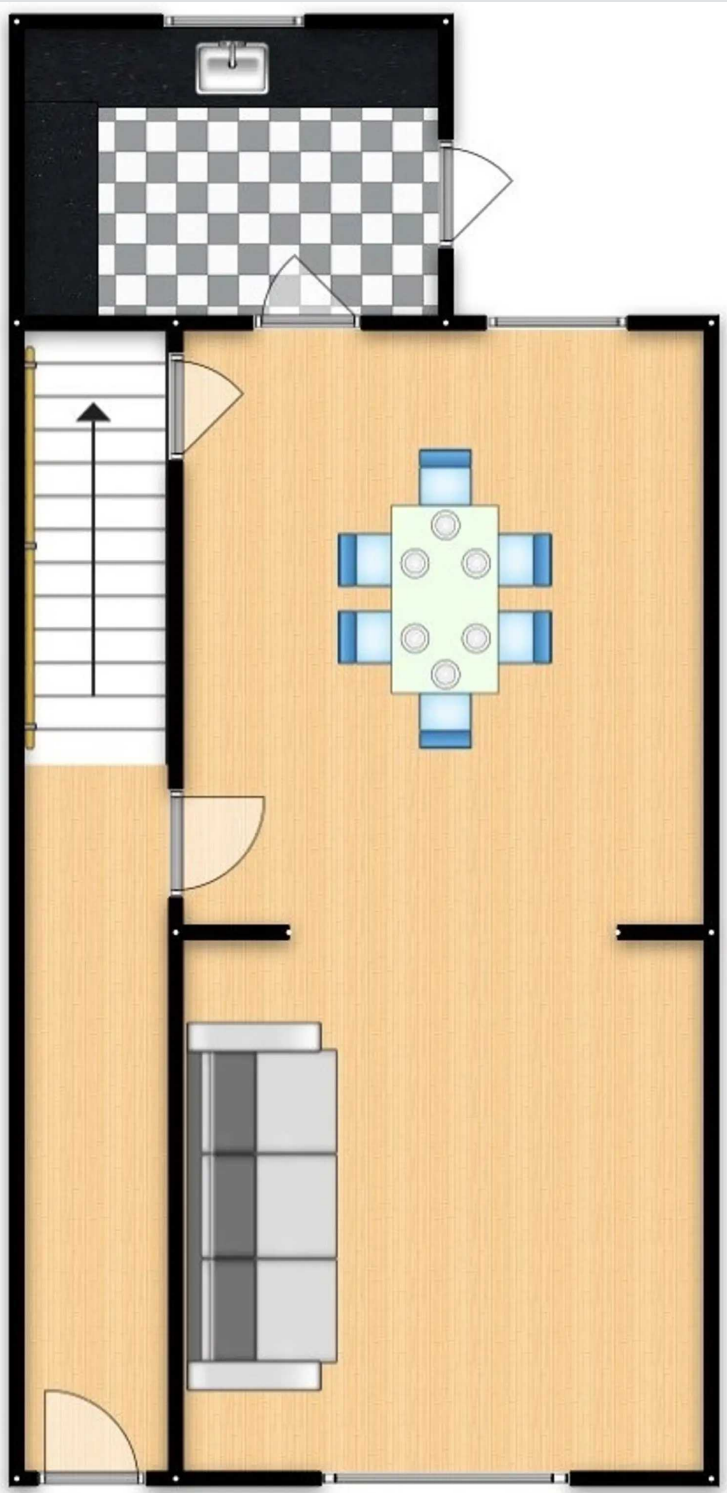
Ceiling light point, double glazed window, wall mounted radiator and carpet flooring.





HILLS







Hills | Salfords Estate Agent

Hills Residential, Sentinel House Albert Street - M30 0SS

0161 707 4900

sales@hills.agency

www.hills.agency/



THE PROPERTY MISDESCRIPTIONS ACT 1991 The Agent has not tested any apparatus, equipment, fixtures and fittings or services and so cannot verify that they are in working order or fit for the purpose. A Buyer is advised to obtain verification from their Solicitor or Surveyor. References to the Tenure of a Property are based on information supplied by the Seller. The Agent has not had sight of the title documents. A Buyer is advised to obtain verification from their Solicitor. You are advised to check the availability of this property before travelling any distance to view. Every effort and precaution has been made to ensure these particulars are correct and not misleading but their accuracy is not guaranteed nor do they form part of any contract. If there is any point which is of particular importance to you, please contact us and we will provide any information you require. This is advisable, particularly if you intend to travel some distance to view the property. The mention of any appliances and services within these details does not imply that they are in full and efficient working order. These particulars are in draft form awaiting Vendors confirmation of their accuracy. These details must therefore be taken as a guide only.