



Roberts Street, Eccles

Manchester



In Excess of £270,000

Roberts Street

Eccles, Manchester

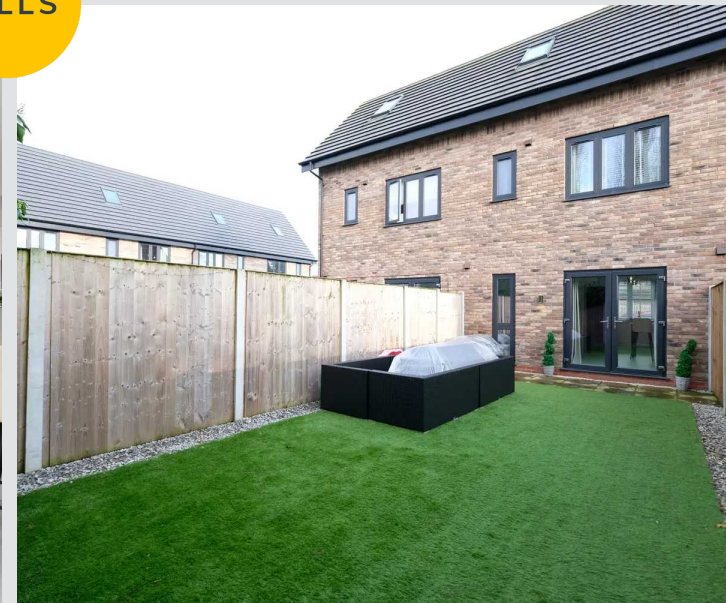
Immaculately presented three bed townhouse in sought-after area. Modern design over three floors, open-plan ground floor, three double bedrooms, en-suite to master, low maintenance gardens. Close to amenities, allocated parking, convenient living.

Perfect blend of style and comfort.

Council Tax band: B

Tenure: Freehold

- Immaculately Presented to a Show Home Standard Throughout
- Laid over Three Spacious Floors
- Open Plan Element to the Ground Floor
- Contemporary Fitted Kitchen with Integral Appliances
- Three Double Bedrooms
- Family Bathroom, En suite to Master & Guest W.C.
- Allocated Parking Space
- Low Maintenance Gardens with Artificial Lawns to the Front & Rear
- Excellently Located Close to Amenities & Fantastic Transport Links



Entrance Hallway

A welcoming entrance hallway entered via a composite front door. Complete with a wall mounted radiator, storage under stairs and laminate flooring.

Lounge / Kitchen / Diner

21' 9" x 14' 3" (6.63m x 4.34m)

Complete with ceiling spotlights, double glazed window and wall mounted radiator. Fitted with patio doors and laminate flooring.

Kitchen

Featuring modern wall and base units with integral fridge freezer, electric hob, oven and washer. Complete with two ceiling light points, double glazed window and wall mounted radiator. Fitted with tiled splashback and laminate flooring. Boiler.

W.C.

6' 5" x 3' 5" (1.96m x 1.04m)

Complete with ceiling spotlights, hand wash basin, W.C and wall mounted radiator. Fitted with laminate flooring.

Landing One

Complete with ceiling spotlights and carpet flooring.

Bedroom Two

Complete with a ceiling light point, double glazed window and wall mounted radiator. Fitted with carpet flooring.

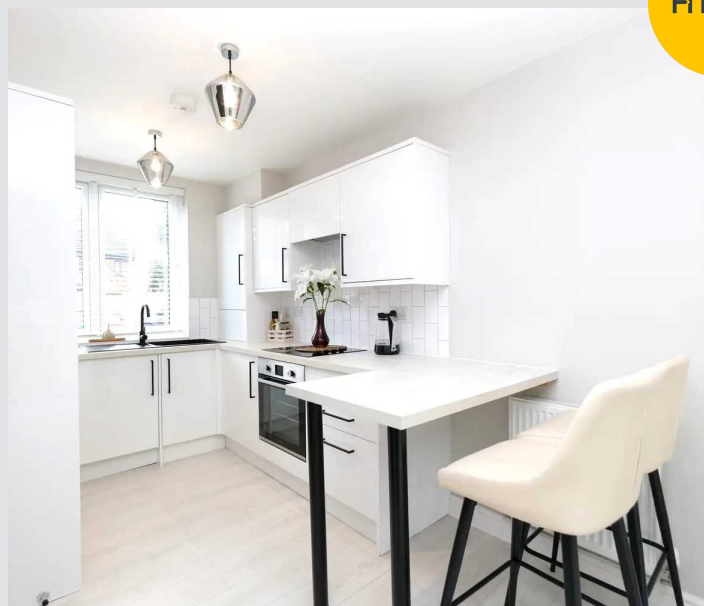
Bedroom Three

10' 1" x 7' 6" (3.07m x 2.29m)

Complete with a ceiling spotlights, double glazed window and carpet flooring.

Bathroom

A contemporary bathroom featuring a three-piece suite including a bath with shower over, hand wash basin and W.C. Complete with ceiling spotlights, heated towel rail, part tiled walls and tiled flooring.



Landing Two

Complete with carpet flooring.

Bedroom One

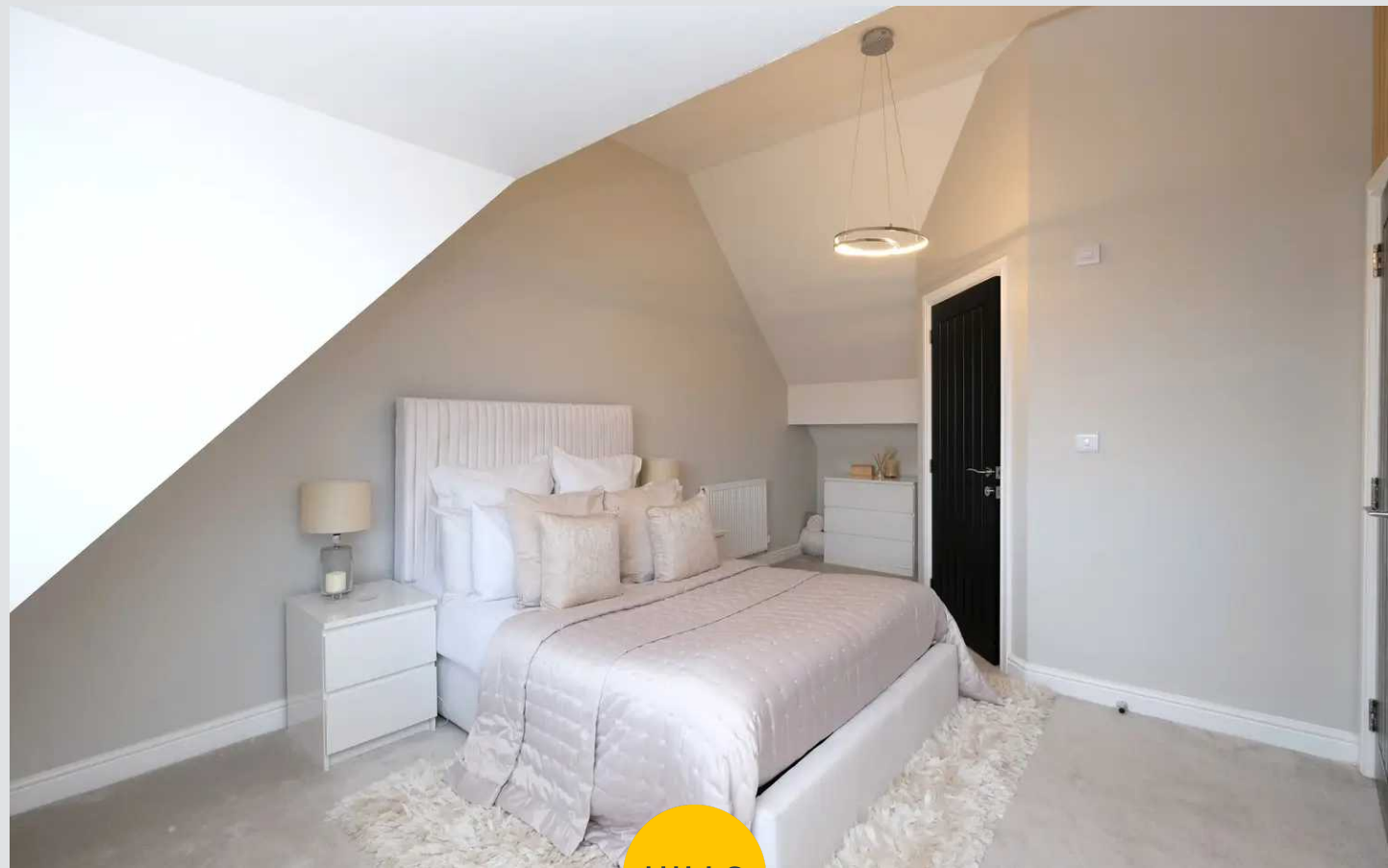
Complete with a ceiling light point, double glazed window and two wall mounted radiators. Fitted with carpet flooring.

En-suite

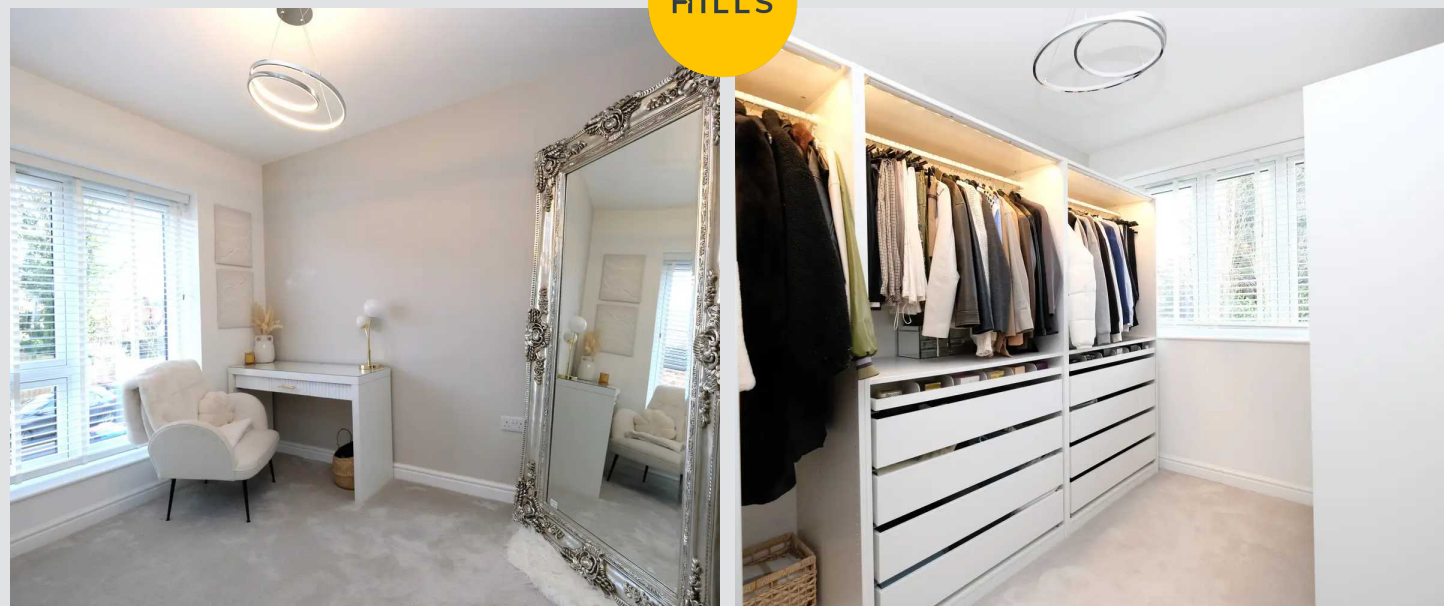
Featuring a shower cubicle, hand wash basin and W.C. Complete with heated towel rail, tiled splashback, part tiled walls and tiled flooring.

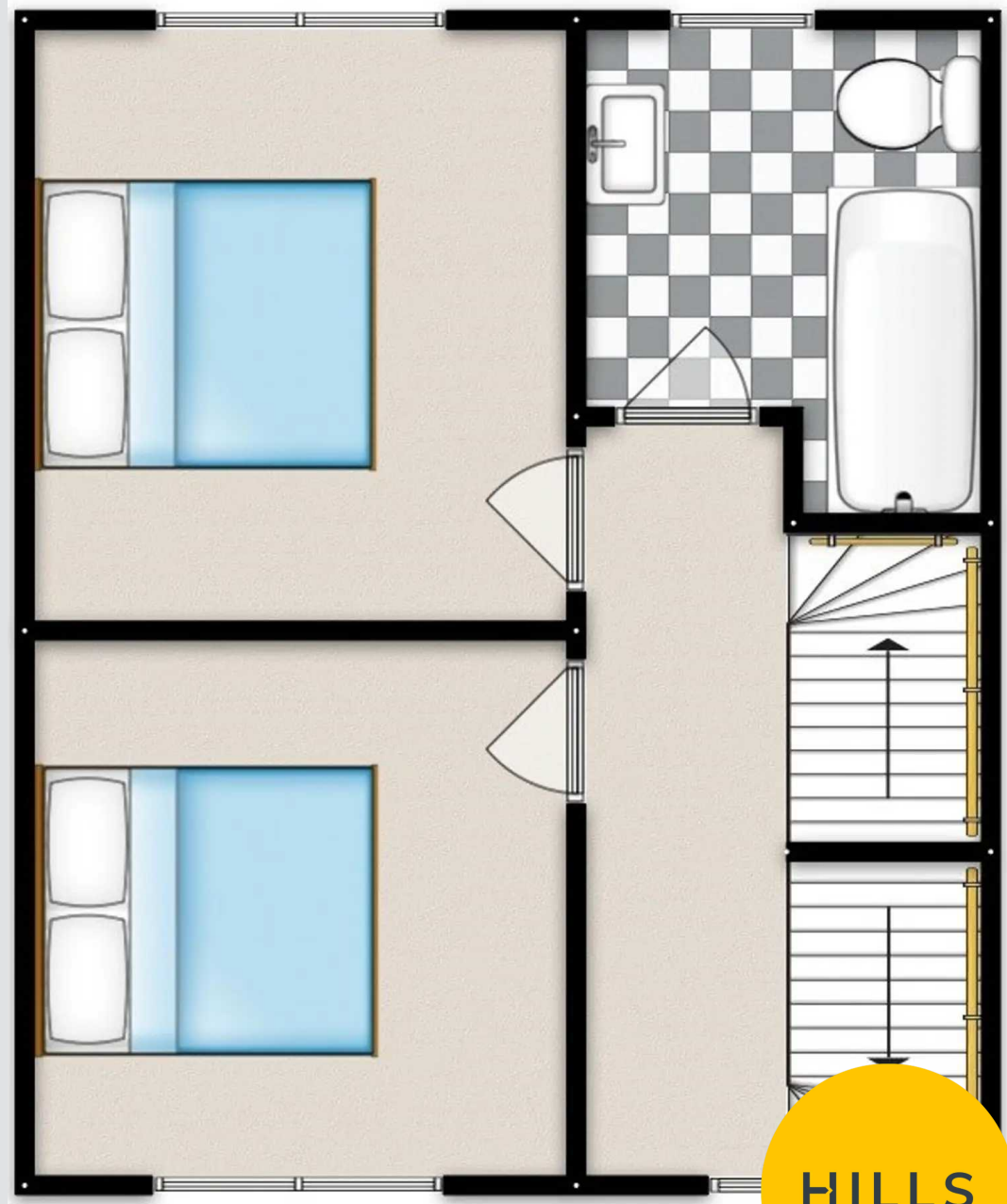
External

To the front of the property is off-road parking for one car with artificial lawn and water tap. To the rear of the property is artificial lawn and patio.

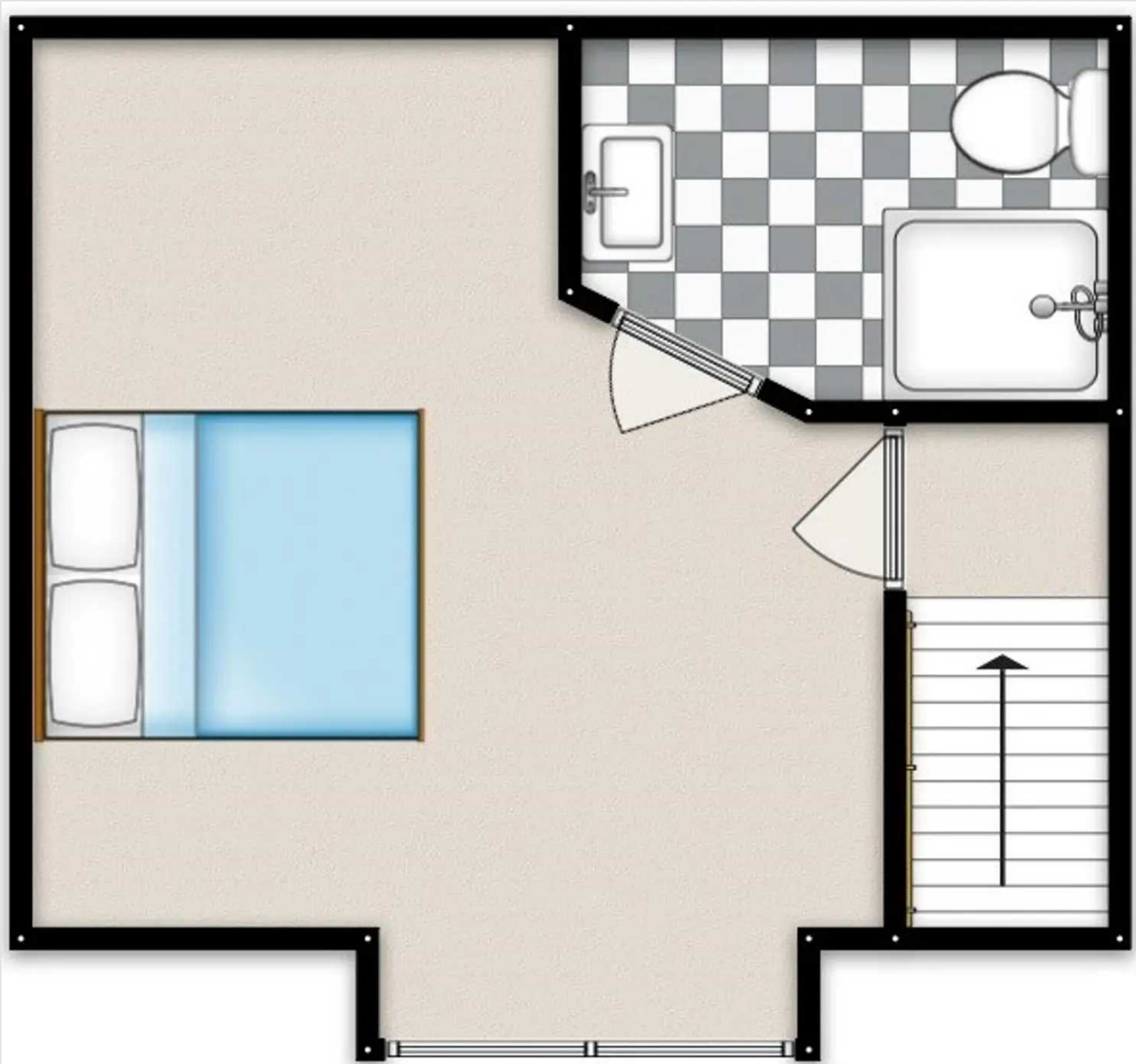


HILLS





HILLS



HILLS



HILLS



Hills | Salfords Estate Agent

Hills Residential, Sentinel House Albert Street - M30 0SS

0161 707 4900

sales@hills.agency

www.hills.agency/

THE PROPERTY MISDESCRIPTIONS ACT 1991 The Agent has not tested any apparatus, equipment, fixtures and fittings or services and so cannot verify that they are in working order or fit for purpose. A Buyer is advised to obtain verification from their Solicitor or Surveyor. References to the Tenure of a Property are based on information supplied by the Seller. The Agent has not had sight of the title documents. A Buyer is advised to obtain verification from their Solicitor. You are advised to check the availability of this property before travelling any distance to view. Every effort and precaution has been made to ensure these particulars are correct and not misleading but their accuracy is not guaranteed nor do they form part of any contract. If there is any point which is of particular importance to you, please contact us and we will provide any information you require. This is advisable, particularly if you intend to travel some distance to view the property. The mention of any appliances and services within these details does not imply that they are in full and efficient working order. These particulars are in draft form awaiting Vendors confirmation of their accuracy. These details must therefore be taken as a guide only.

