



Monton Court, Monton Road

Manchester



In Excess of £175,000

Monton Court

Manchester

Well-presented two bed apartment in sought-after Monton area. Modern open plan kitchen/living/dining space. Two double bedrooms. Stylish bathroom suite. Resident parking. Communal gardens. Close to transport links. Ideal for first-time buyers or investors. Prime location & modern finishes.

Council Tax band: B

Tenure: Leasehold

- Highly Sought After Monton Location, just a Short Stroll to the High Street
- Situated on the Second Floor
- Open Plan Kitchen, Living & Dining Space
- Two Generous Double Bedrooms
- Three Piece Bathroom Suite
- Residents Parking Available to the Rear
- Communal Gardens with a Well Kept Lawn to the Front
- Easy access to Bus, Train & Tram Stations
- The Perfect First Home



HILLS



Entrance Hallway

Complete with a ceiling light point and carpet flooring.

Lounge

13' 1" x 11' 5" (3.98m x 3.47m)

Complete with a ceiling light point, Velux window, two double glazed windows and electric radiator. Fitted with carpet flooring.

Kitchen

10' 11" x 8' 7" (3.33m x 2.62m)

Featuring complementary wall and base units with integral cooker and hob. Space for a fridge freezer. Complete with a ceiling light point and lino flooring.

Bathroom

6' 6" x 7' 6" (1.98m x 2.28m)

Featuring a three-piece suite including bath, hand wash basin and W.C. Complete with a ceiling light point and heated towel rail.

Bedroom One

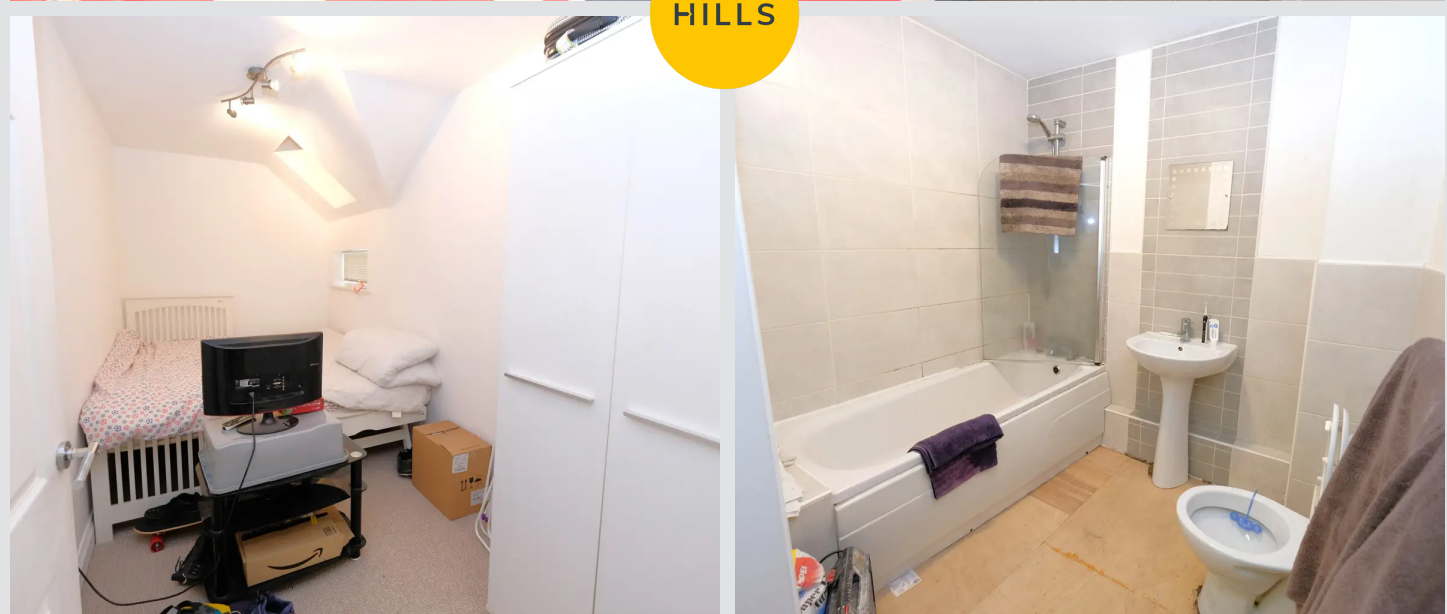
9' 1" x 11' 0" (2.76m x 3.35m)

Complete with a ceiling light point, Velux window, double glazed window and electric radiator. Fitted with carpet flooring.

Bedroom Two

6' 7" x 13' 6" (2.01m x 4.11m)

Complete with a ceiling light point, Velux window, double glazed window and electric radiator. Fitted with carpet flooring.







Hills | Salfords Estate Agent

Hills Residential, Sentinel House Albert Street - M30 0SS

0161 707 4900

sales@hills.agency

www.hills.agency/



THE PROPERTY MISDESCRIPTIONS ACT 1991 The Agent has not tested any apparatus, equipment, fixtures and fittings or services and so cannot verify that they are in working order or fit for the purpose. A Buyer is advised to obtain verification from their Solicitor or Surveyor. References to the Tenure of a Property are based on information supplied by the Seller. The Agent has not had sight of the title documents. A Buyer is advised to obtain verification from their Solicitor. You are advised to check the availability of this property before travelling any distance to view. Every effort and precaution has been made to ensure these particulars are correct and not misleading but their accuracy is not guaranteed nor do they form part of any contract. If there is any point which is of particular importance to you, please contact us and we will provide any information you require. This is advisable, particularly if you intend to travel some distance to view the property. The mention of any appliances and services within these details does not imply that they are in full and efficient working order. These particulars are in draft form awaiting Vendors confirmation of their accuracy. These details must therefore be taken as a guide only.