

Sunningdale Drive

Salford



£240,000

# Sunningdale Drive

Salford

This **STYLISH** three bedroom, semi-detached family home is situated on a popular residential estate, backing onto Duncan Mathewson playing fields.

Featuring a **BRAND NEW** modern fitted kitchen, a driveway for off-road parking and beautifully presented gardens, viewing is a **MUST!**

Council Tax band: B

Tenure: Leasehold

- Stylish Three Bedroom Semi-Detached Family Home
- Tastefully Decorated Throughout to a High Standard
- Backing onto Duncan Mathewson Playing Fields to the Rear
- Brand New, Modern Fitted Kitchen and a Three-Piece Family Bathroom
- Three Well-Proportioned Bedrooms
- Driveway to the Front Providing Off-Road Parking
- Beautifully Presented Garden to the Rear with Laid-to-Lawn Grass, Decking and Paving, Along with a Well-Presented, Low-Maintenance Garden to the Front
- Close to Excellent Transport Links into Salford Quays, Media City and Manchester City Centre
- Viewing is Highly Recommended, Properties in this Location are Popular is Get in Touch Today!



### Entrance Hallway

Complete with a ceiling light point, double glazed window and wall mounted radiator. Fitted with carpet flooring.

### Lounge / Diner

17' 7" x 10' 11" (5.36m x 3.32m)

Complete with two ceiling light points, double glazed window and wall mounted radiator. Fitted with patio doors and laminate flooring.

### Kitchen

7' 11" x 7' 8" (2.41m x 2.34m)

Featuring complementary wall and base units with integral hob and oven. Space for washer and dryer. Complete with a ceiling light point, double glazed window and laminate flooring.

### Landing

Complete with a ceiling light point, double glazed window and carpet flooring.

### Bedroom One

11' 11" x 10' 10" (3.63m x 3.31m)

Complete with ceiling light point, double glazed window and wall mounted radiator. Fitted with carpet flooring.

### Bedroom Two

10' 11" x 8' 1" (3.32m x 2.46m)

Complete with a ceiling light point, double glazed window and wall mounted radiator. Fitted with carpet flooring.

### Bedroom Three

8' 0" x 7' 9" (2.43m x 2.36m)

Complete with a ceiling light point, double glazed window and wall mounted radiator. Fitted with carpet flooring.



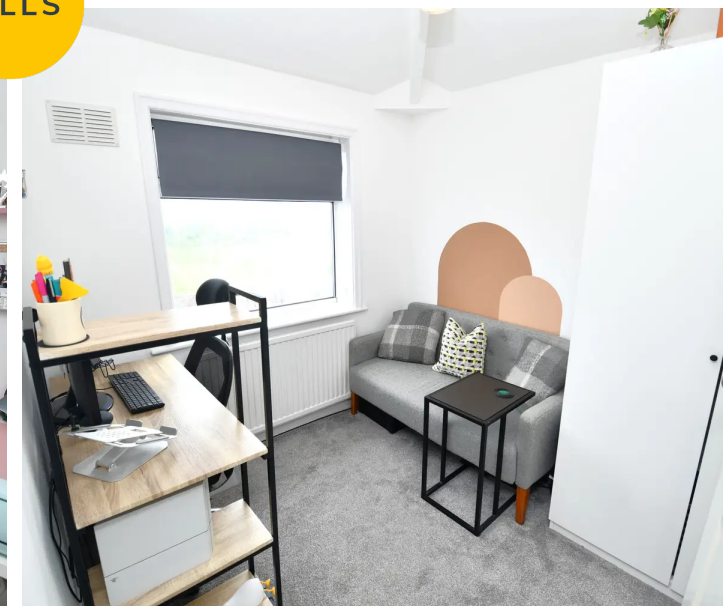
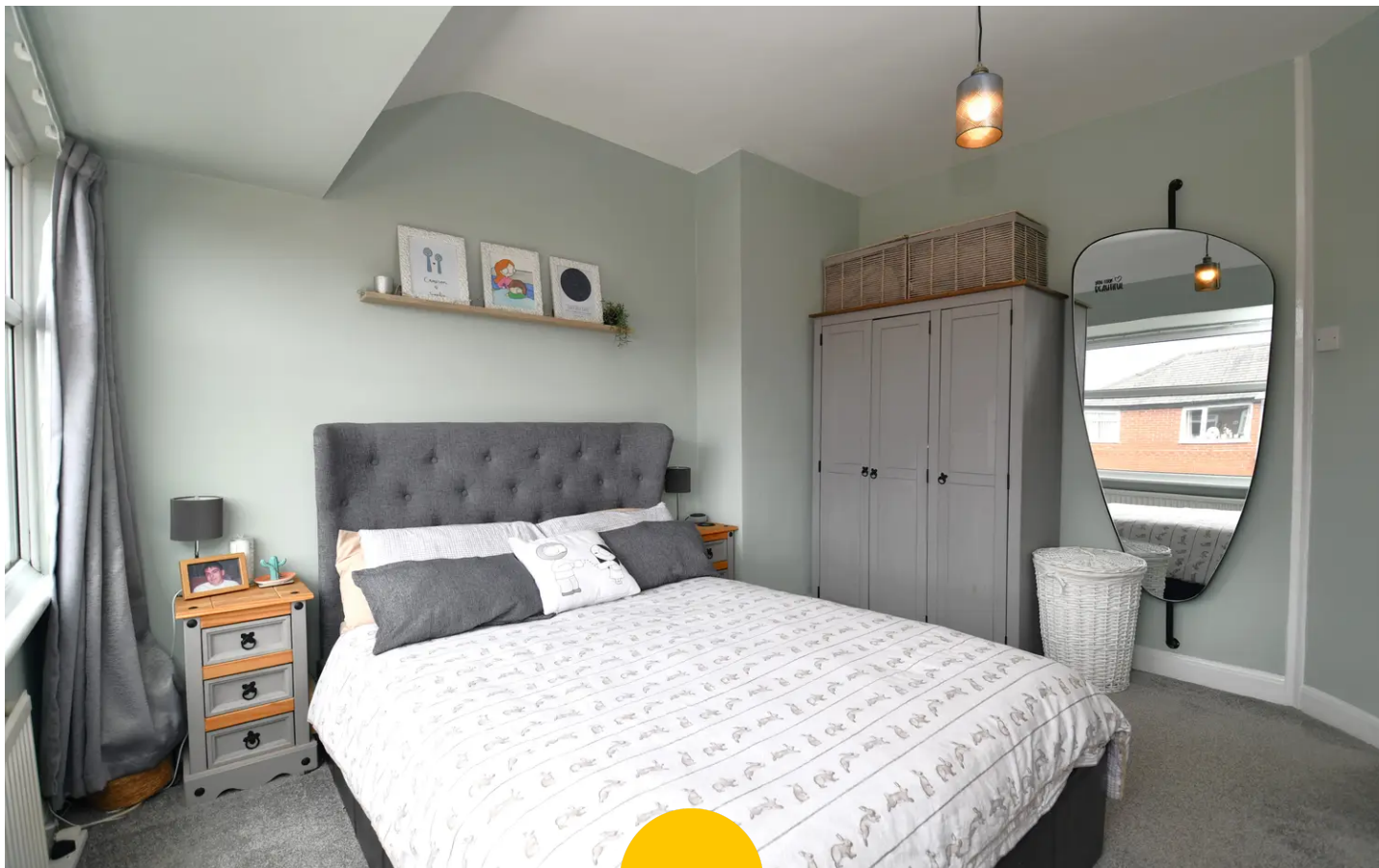
**Bathroom**

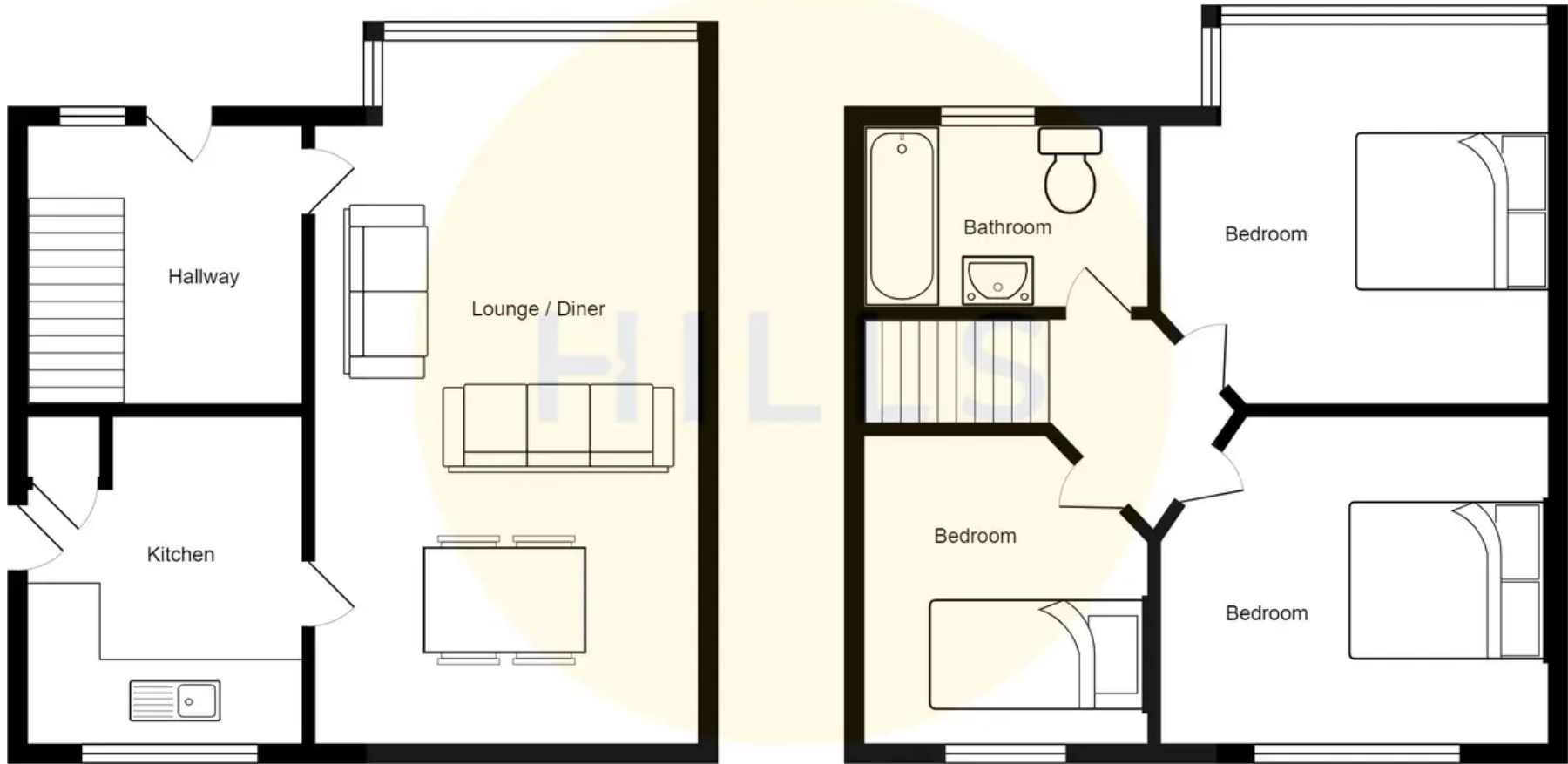
7' 8" x 6' 0" (2.34m x 1.82m)

Featuring a three-piece suite including a bath with shower over, hand wash basin and W.C. Complete with ceiling spotlights, double glazed window, tiled walls and flooring.

**External**

To the front of the property is a driveway providing off-road parking with a well presented, low maintenance garden. To the rear of the property is a beautifully presented garden with laid-to-lawn, decking and paving with views over Duncan Mathewson Playing Fields.







## Hills | Salfords Estate Agent

Hills Residential, Sentinel House Albert Street - M30 0SS

0161 707 4900

[sales@hills.agency](mailto:sales@hills.agency)

[www.hills.agency/](http://www.hills.agency/)



THE PROPERTY MISEDDESCRIPTIONS ACT 1991 The Agent has not tested any apparatus, equipment, fixtures and fittings or services and so cannot verify that they are in working order or fit for the purpose. A Buyer is advised to obtain verification from their Solicitor or Surveyor. References to the Tenure of a Property are based on information supplied by the Seller. The Agent has not had sight of the title documents. A Buyer is advised to obtain verification from their Solicitor. You are advised to check the availability of this property before travelling any distance to view. Every effort and precaution has been made to ensure these particulars are correct and not misleading but their accuracy is not guaranteed nor do they form part of any contract. If there is any point which is of particular importance to you, please contact us and we will provide any information you require. This is advisable, particularly if you intend to travel some distance to view the property. The mention of any appliances and services within these details does not imply that they are in full and efficient working order. These particulars are in draft form awaiting Vendors confirmation of their accuracy. These details must therefore be taken as a guide only.