



# Maranatha Court Barton Road

Eccles



£125,000

# Maranatha Court Barton Road

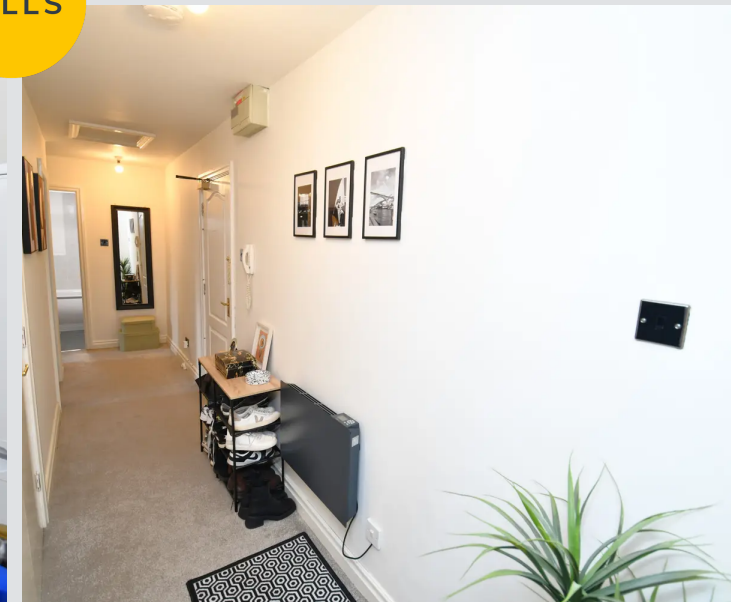
Eccles, Manchester

A tastefully decorated two bedroom, top floor apartment situated in a prominent position, facing Bridgewater canal, which has a direct walking route into Monton Village!

Council Tax band: A

Tenure: Leasehold

- Beautifully Presented Two Bedroom, Top Floor Apartment
- Facing Bridgewater Canal, with a Direct Walking Route into Monton Village
- Spacious Lounge Diner
- Two Well-Proportioned Bedrooms
- Fitted Kitchen and a Modern, Three-Piece Bathroom
- Benefits from Secure Intercom Access, Residents Permit Parking and Well-Maintained Communal Gardens
- Within Walking Distance of Both Eccles Town Centre and the Trafford Centre, Providing Access to a Range of Amenities
- Close to Excellent Transport Links into Salford Quays, Media City and Manchester City Centre
- Ideal First Time Home or Investment, Viewing is Highly Recommended!



### Entrance Hallway

Complete with two ceiling light points and carpet flooring.

### Lounge / Diner

14' 2" x 11' 7" (4.33m x 3.52m)

Complete with a ceiling light point, double glazed window and electric radiator. Fitted with carpet flooring.

### Kitchen

10' 0" x 7' 10" (3.04m x 2.40m)

Featuring complementary fitted units with space for a washer and fridge freezer. Complete with a ceiling light point, double glazed window and laminate flooring.

### Bedroom One

10' 0" x 8' 6" (3.06m x 2.59m)

Complete with a ceiling light point, double glazed window and electric radiator. Fitted with carpet flooring.

### Bedroom Two

9' 11" x 7' 6" (3.03m x 2.28m)

Complete with a ceiling light point, double glazed window and electric radiator. Fitted with carpet flooring.

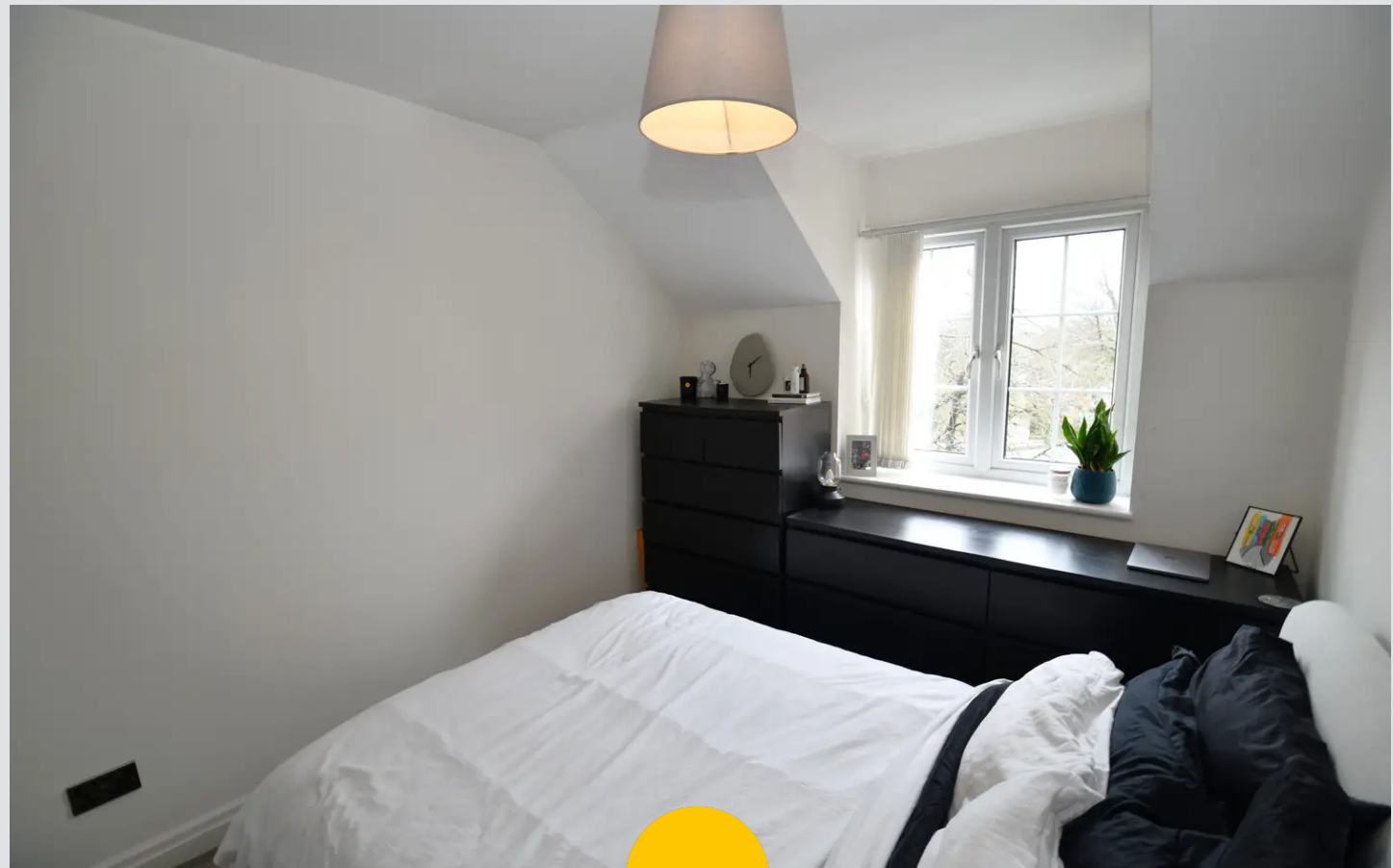
### Bathroom

6' 5" x 6' 5" (1.96m x 1.95m)

Featuring a three-piece suite including bath with shower over, hand wash basin and W.C. Complete with a ceiling light point, part tiled walls and tiled flooring.

### External

Complete with permit parking.







## Hills | Salfords Estate Agent

Hills Residential, Sentinel House Albert Street - M30 0SS

0161 707 4900

[sales@hills.agency](mailto:sales@hills.agency)

[www.hills.agency/](http://www.hills.agency/)



THE PROPERTY MISDESCRIPTIONS ACT 1991 The Agent has not tested any apparatus, equipment, fixtures and fittings or services and so cannot verify that they are in working order or fit for the purpose. A Buyer is advised to obtain verification from their Solicitor or Surveyor. References to the Tenure of a Property are based on information supplied by the Seller. The Agent has not had sight of the title documents. A Buyer is advised to obtain verification from their Solicitor. You are advised to check the availability of this property before travelling any distance to view. Every effort and precaution has been made to ensure these particulars are correct and not misleading but their accuracy is not guaranteed nor do they form part of any contract. If there is any point which is of particular importance to you, please contact us and we will provide any information you require. This is advisable, particularly if you intend to travel some distance to view the property. The mention of any appliances and services within these details does not imply that they are in full and efficient working order. These particulars are in draft form awaiting Vendors confirmation of their accuracy. These details must therefore be taken as a guide only.