



227a Chorley Road, Swinton

Manchester



Guide Price £550,000

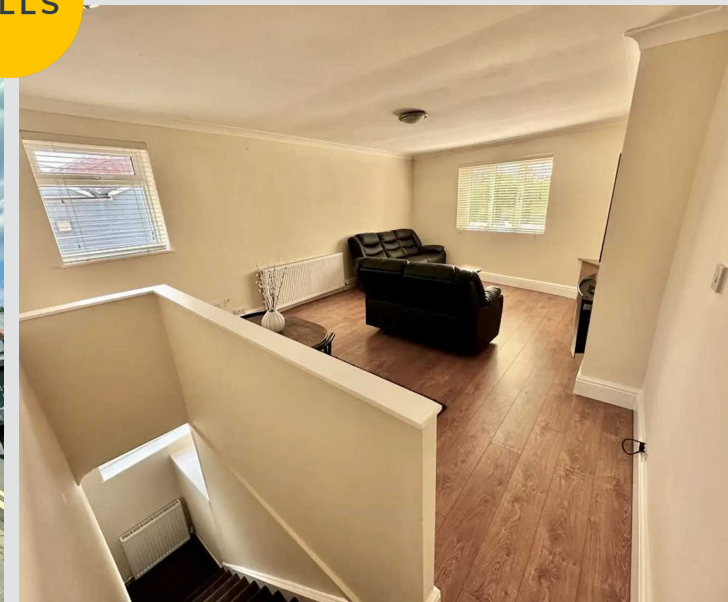
227a Chorley Road

Swinton, Manchester

Council Tax band: D

Tenure: Freehold

- SUPERB INVESTMENT OPPORTUNITY
- 4 RETAIL UNITS + 4 APARTMENTS + SEPARATE DETACHED UNIT
- OFF-ROAD PARKING FOR MULTIPLE VEHICLES
- DESIRABLE CENTRAL SWINTON LOCATION
- WALKING DISTANCE TO MANY LOCAL AMENITIES & TRANSPORT LINKS



Outbuilding

16' 9" x 12' 6" (5.1m x 3.8m)

Flat 1 - Hallway

21' 12" x 3' 3" (6.7m x 1m)

Flat 1 - Living Room

20' 12" x 14' 5" (6.4m x 4.4m)

Flat 1 - Kitchen

10' 10" x 5' 11" (3.3m x 1.8m)

Flat 1 - Bedroom

13' 9" x 10' 6" (4.2m x 3.2m)

Flat 1 - Bathroom

7' 10" x 6' 3" (2.4m x 1.9m)

Flat 2 - Room 1

18' 1" x 13' 9" (5.5m x 4.2m)

Flat 2 - Room 2

13' 1" x 13' 1" (4m x 4m)

Flat 3 - Hallway

14' 5" x 3' 3" (4.4m x 1m)

Flat 3 - Kitchen

17' 9" x 7' 7" (5.4m x 2.3m)

Flat 3 - Bedroom

14' 1" x 11' 10" (4.3m x 3.6m)

Flat 3 - Bathroom

12' 10" x 7' 3" (3.9m x 2.2m)

Flat 4

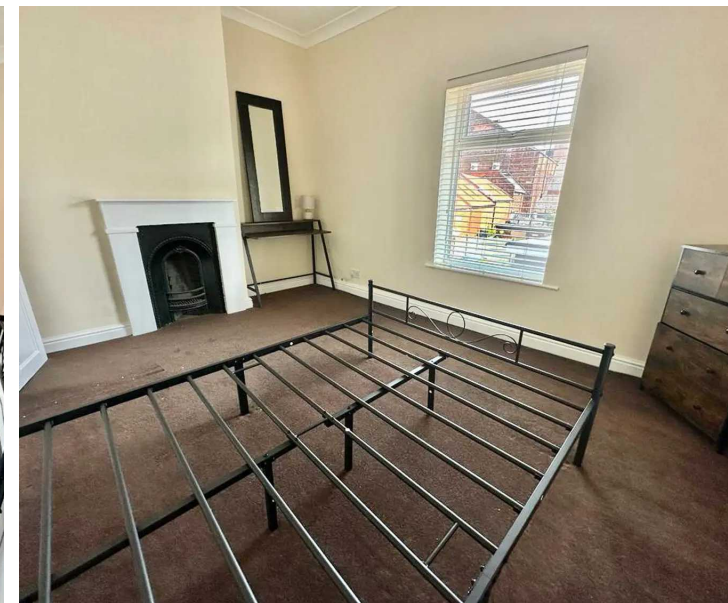
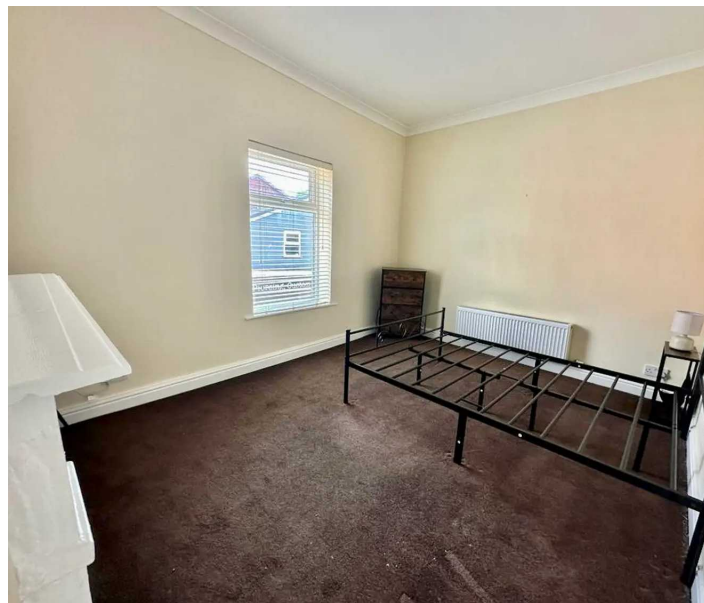
44' 3" x 17' 1" (13.5m x 5.2m)

Shop 4 - Shop front

16' 1" x 13' 1" (4.9m x 4m)

Shop 4 - Kitchen

16' 9" x 13' 1" (5.1m x 4m)



Shop 4 - Kitchen

16' 9" x 13' 1" (5.1m x 4m)

Shop 4 - Hallway

7' 10" x 3' 11" (2.4m x 1.2m)

Shop 4 - WC

4' 3" x 3' 11" (1.3m x 1.2m)

Shop 4 - Storage

12' 6" x 10' 10" (3.8m x 3.3m)

Shop 3 - Shop front

14' 9" x 14' 5" (4.5m x 4.4m)

Shop 3 - Shop rear

14' 5" x 9' 2" (4.4m x 2.8m)

Shop 3 - Kitchen

6' 7" x 6' 7" (2m x 2m)

Shop 3 - Kitchen

6' 7" x 6' 7" (2m x 2m)

Shop 3 - Storage

7' 7" x 5' 7" (2.3m x 1.7m)

Shop 3 - WC

7' 10" x 3' 3" (2.4m x 1m)

Shop 1 - Shop front

17' 9" x 14' 9" (5.4m x 4.5m)

Shop 1 - Office

13' 5" x 13' 1" (4.1m x 4m)

Shop 1 - Storage

12' 6" x 10' 10" (3.8m x 3.3m)

Shop 1 - Kitchen

11' 6" x 10' 10" (3.5m x 3.3m)

Shop 1 - WC

6' 7" x 3' 7" (2m x 1.1m)

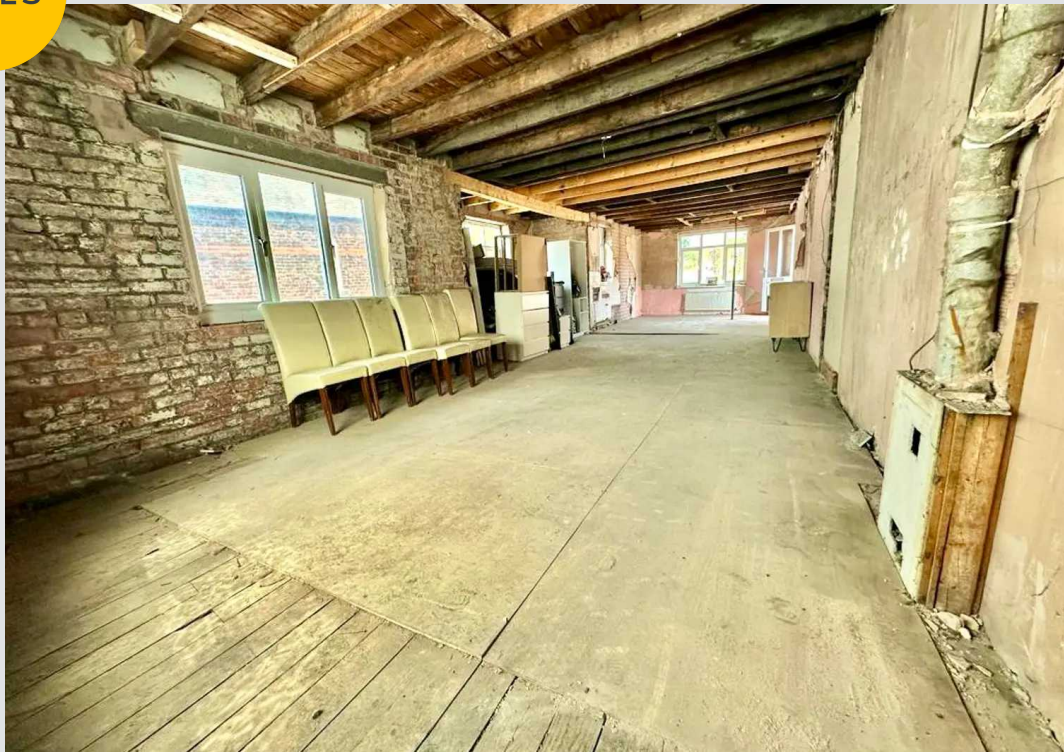
Shop 1 - Cellar

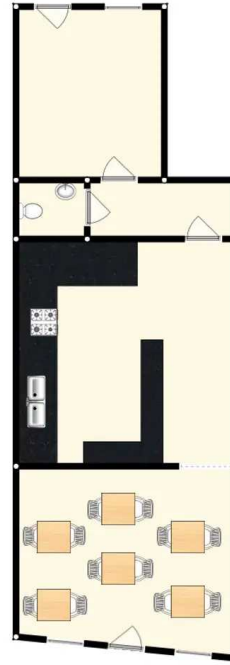
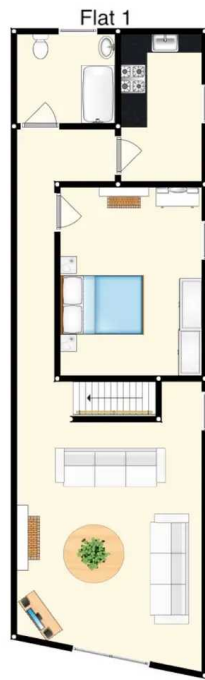
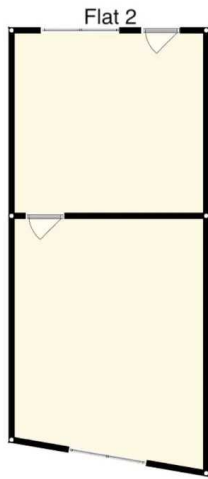
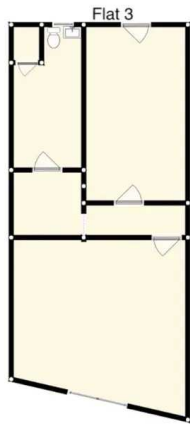
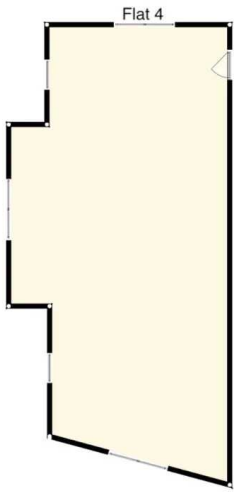
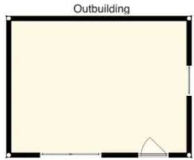
17' 1" x 13' 9" (5.2m x 4.2m)





HILLS







Hills Swinton | Salfords Estate Agent

4 Pendlebury Road, Swinton - M27 4AR

0161 794 2888

swinton@hills.agency

www.hills.agency/



THE PROPERTY MISDESCRIPTIONS ACT 1991 The Agent has not tested any apparatus, equipment, fixtures and fittings or services and so cannot verify that they are in working order or fit for the purpose. A Buyer is advised to obtain verification from their Solicitor or Surveyor. References to the Tenure of a Property are based on information supplied by the Seller. The Agent has not had sight of the title documents. A Buyer is advised to obtain verification from their Solicitor. You are advised to check the availability of this property before travelling any distance to view. Every effort and precaution has been made to ensure these particulars are correct and not misleading but their accuracy is not guaranteed nor do they form part of any contract. If there is any point which is of particular importance to you, please contact us and we will provide any information you require. This is advisable, particularly if you intend to travel some distance to view the property. The mention of any appliances and services within these details does not imply that they are in full and efficient working order. These particulars are in draft form awaiting Vendors confirmation of their accuracy. These details must therefore be taken as a guide only.