



Seedley Terrace, Salford

Salford



£180,000

Seedley Terrace

Salford

Just a short walk from Buile Hill park is this THREE BEDROOM TERRACED PROPERTY! Benefitting from a driveway for two cars and three well-proportioned bedrooms, this property would be PERFECT for someone looking for a property to modernise and add their own stamp to!

Council Tax band: A

Tenure: Leasehold

- Three Bedroom Terraced Property
- Benefits from a Driveway Providing Off-Road Parking for Two Cars to the Front
- Bay-Fronted Lounge and a Separate Dining Room
- Fitted Kitchen and a Modern, Three-Piece Wet Room
- Three Well-Proportioned Bedrooms, with Fitted Furniture in Two of the Bedrooms
- Mature, Tiered Garden to the Rear
- Just a Short Walk from Buile Hill Park, with Easy Access to Local Schooling and Amenities
- Close to Excellent Transport Links into Salford Quays, Media City and Manchester City Centre
- Ideal for Someone Looking to Put Their Own Stamp on a Property
- Viewing is Highly Recommended!



Entrance Hallway

Complete with a ceiling light point, double glazed window and wall mounted radiator.

Lounge

13' 1" x 11' 7" (3.99m x 3.54m)

A spacious lounge complete with a ceiling light point, single glazed bay window and wall mounted radiator.

Fitted with carpet flooring.

Kitchen

10' 2" x 5' 3" (3.09m x 1.60m)

Featuring fitted units with space for a freestanding oven, fridge freezer and dishwasher. Complete with a ceiling light point and tiled flooring.

Dining

10' 9" x 8' 8" (3.27m x 2.64m)

Complete with a ceiling light point, single glazed window and wall mounted radiator. Fitted with vinyl flooring.

Landing

Complete with a ceiling light point and carpet flooring.

Bedroom One

13' 4" x 12' 2" (4.06m x 3.71m)

Complete with a ceiling light point, single glazed window and wall mounted radiator. Fitted with vinyl flooring.

Bedroom Two

12' 2" x 8' 10" (3.71m x 2.68m)

Featuring fitted furniture. Complete with a ceiling light point, single glazed window and wall mounted radiator. Fitted with vinyl flooring.

Bedroom Three

8' 10" x 7' 1" (2.68m x 2.17m)

Featuring fitted furniture. Complete with a ceiling light point, single glazed window and wall mounted radiator. Fitted with vinyl flooring.



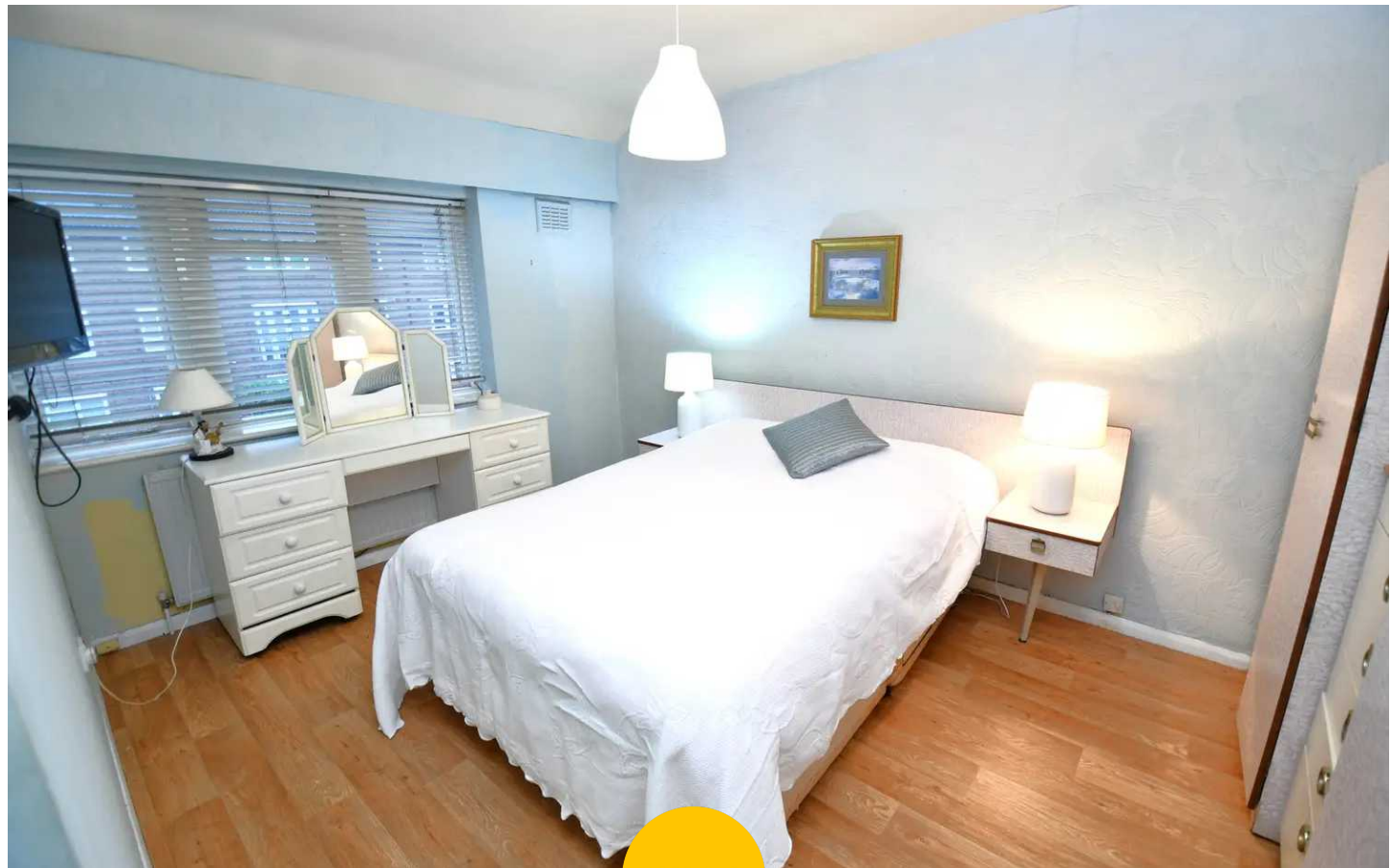
Shower Room

5' 11" x 5' 3" (1.80m x 1.61m)

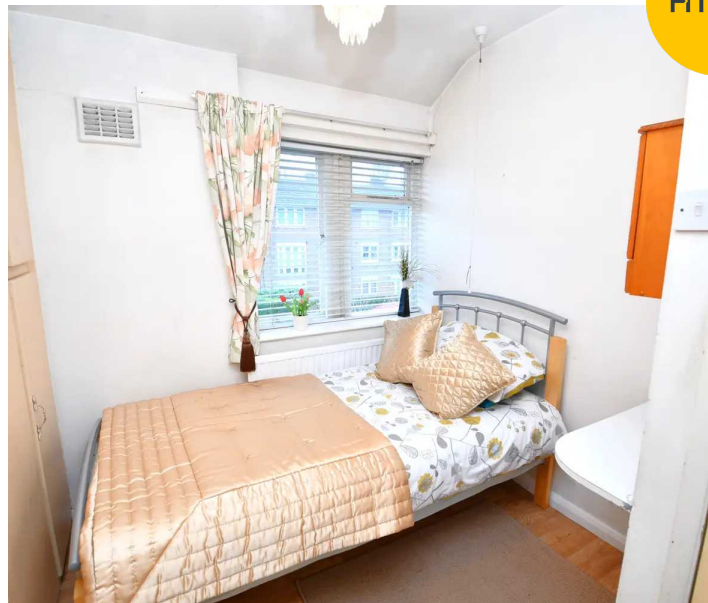
Featuring a shower, hand wash basin and W.C. Complete with a ceiling light point, single glazed window, tiled walls and vinyl flooring.

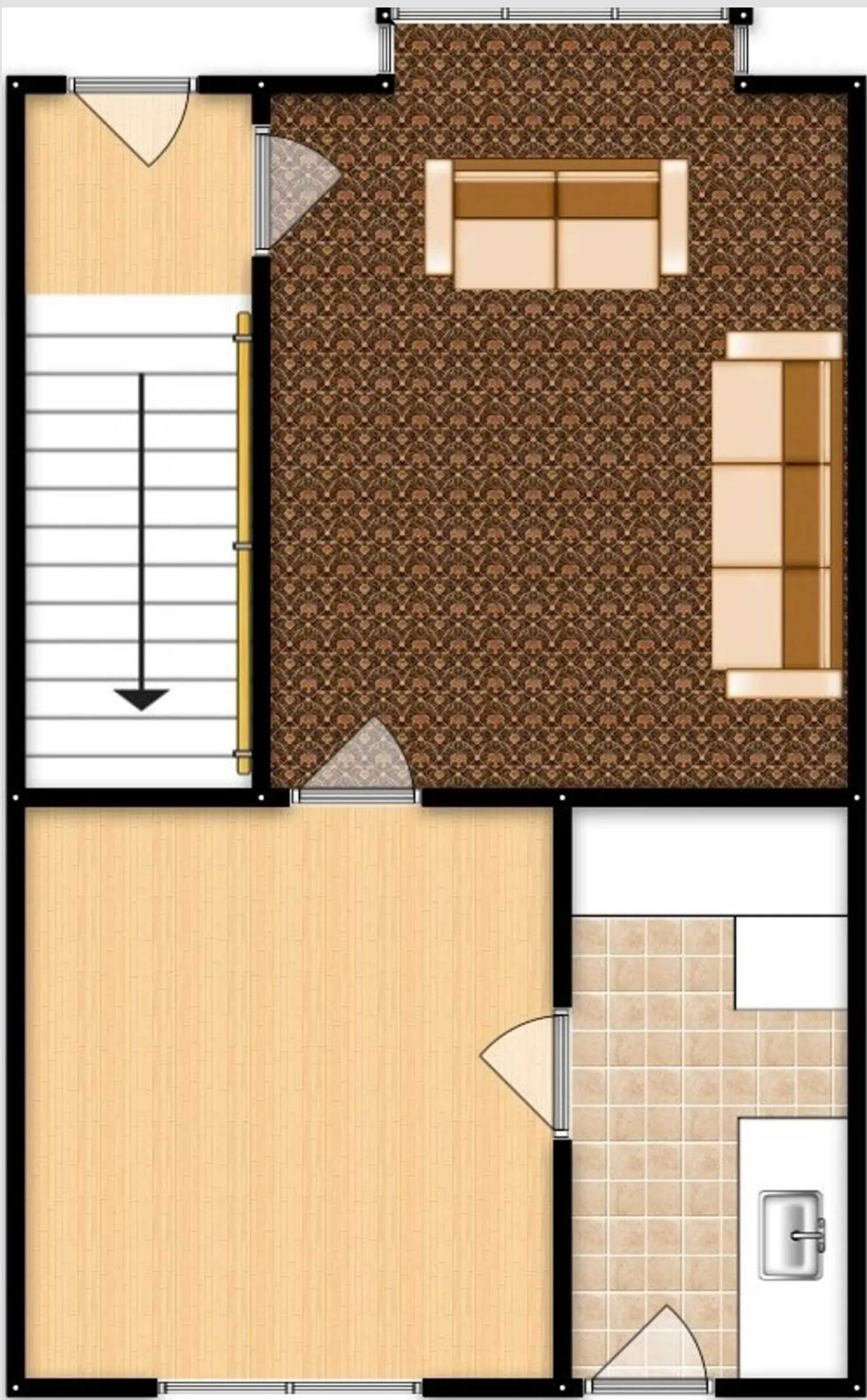
External

To the front of the property is a driveway for two cars. To the rear of the property is a mature tiered garden.



HILLS







Hills | Salfords Estate Agent

Hills Residential, Sentinel House Albert Street - M30 0SS

0161 707 4900

sales@hills.agency

www.hills.agency/



THE PROPERTY MISDESCRIPTIONS ACT 1991 The Agent has not tested any apparatus, equipment, fixtures and fittings or services and so cannot verify that they are in working order or fit for the purpose. A Buyer is advised to obtain verification from their Solicitor or Surveyor. References to the Tenure of a Property are based on information supplied by the Seller. The Agent has not had sight of the title documents. A Buyer is advised to obtain verification from their Solicitor. You are advised to check the availability of this property before travelling any distance to view. Every effort and precaution has been made to ensure these particulars are correct and not misleading but their accuracy is not guaranteed nor do they form part of any contract. If there is any point which is of particular importance to you, please contact us and we will provide any information you require. This is advisable, particularly if you intend to travel some distance to view the property. The mention of any appliances and services within these details does not imply that they are in full and efficient working order. These particulars are in draft form awaiting Vendors confirmation of their accuracy. These details must therefore be taken as a guide only.