



Lower Seedley Road, Salford

Salford

HILLS

In Excess of £225,000

Lower Seedley Road

Salford, Salford

Situated in a prime location facing Buile Hill park is this SUBSTANTIAL FOUR BEDROOM TERRACED PROPERTY! Offering an abundance of space over three floors, with the added benefit of a cellar, this property is not to be missed!

Council Tax band: B

- Substantial Four Bedroom Property Spread Over Three Floors
- In a Prime Location, Facing Buile Hill Park
- Bay-Fronted Lounge, Dining Room and an Additional Reception Room
- Fitted Kitchen and a Three-Piece Bathroom
- Four Large Double Bedrooms
- With the Added Benefit of a Cellar with the Potential for Further Development
- Low-Maintenance Courtyard Gardens to the Front and Rear, with an Outside Toilet to the Rear
- Ideal Investment, with the Potential to Add Value
- Early Viewing Essential!



HILLS

Hall

Ceiling light point and wall mounted radiator.

Lounge

14' 1" x 6' 3" (4.3m x 1.9m)

Ceiling light point, two wall light points, double glazed bay window and wall mounted radiator.

Second Reception room

11' 10" x 11' 6" (3.6m x 3.5m)

Ceiling light point, double glazed window and wall mounted radiator.

Third reception room

10' 10" x 10' 6" (3.3m x 3.2m)

Ceiling light point, double glazed window and wall mounted radiator.

Kitchen

10' 10" x 6' 11" (3.3m x 2.1m)

Fitted with a range of wall and base units with complementary work surfaces and integral sink and drainer unit. Space for washer, dryer, fridge freezer and free standing oven. Ceiling light point and double glazed window.

Landing

Ceiling light point.

Bedroom One

17' 9" x 11' 10" (5.4m x 3.6m)

Ceiling light point, two double glazed windows and wall mounted radiator.

Bedroom Two

11' 10" x 11' 6" (3.6m x 3.5m)

Ceiling light point, double glazed window and wall mounted radiator.



HILLS



Bedroom Three

11' 6" x 10' 10" (3.5m x 3.3m)

Ceiling light point, double glazed window and wall mounted radiator.

Bedroom Four

20' 4" x 17' 9" (6.2m x 5.4m)

Ceiling light point, double glazed window and wall mounted radiator.

Bathroom

7' 7" x 6' 3" (2.3m x 1.9m)

Fitted with a three pieces suite including a hand wash basin, WC and bath with overhead shower. Ceiling light point, double glazed window and wall mounted radiator.

Cellar chamber one

15' 9" x 4' 3" (4.8m x 1.3m)

Ceiling light point.

Cellar chamber two

14' 5" x 12' 10" (4.4m x 3.9m)

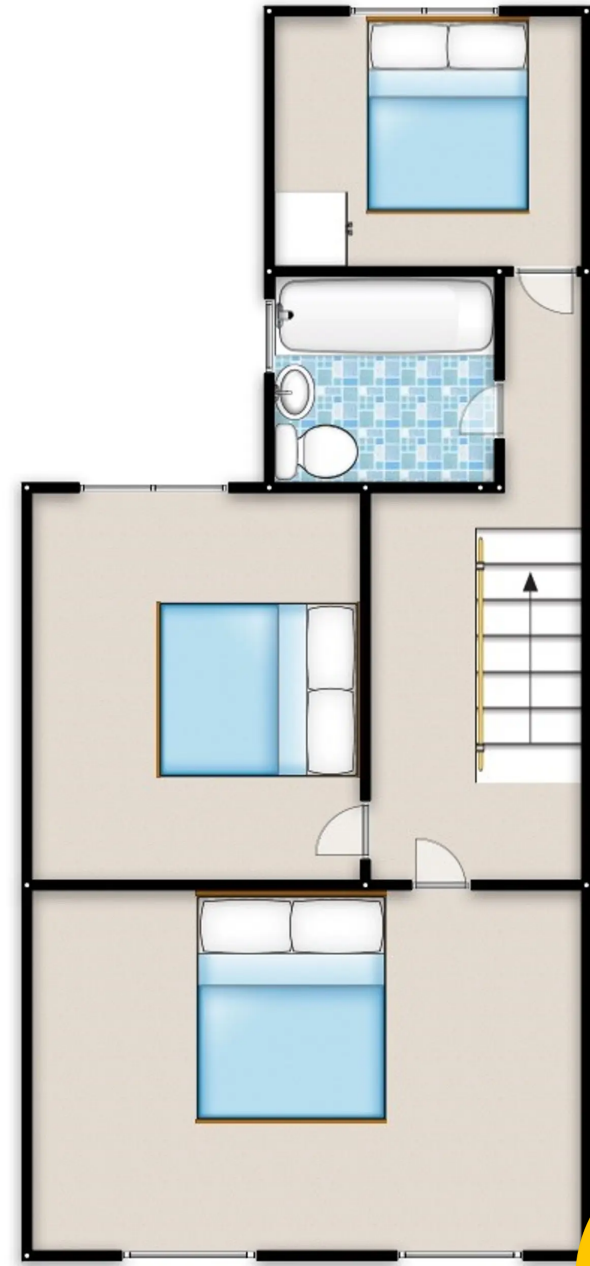
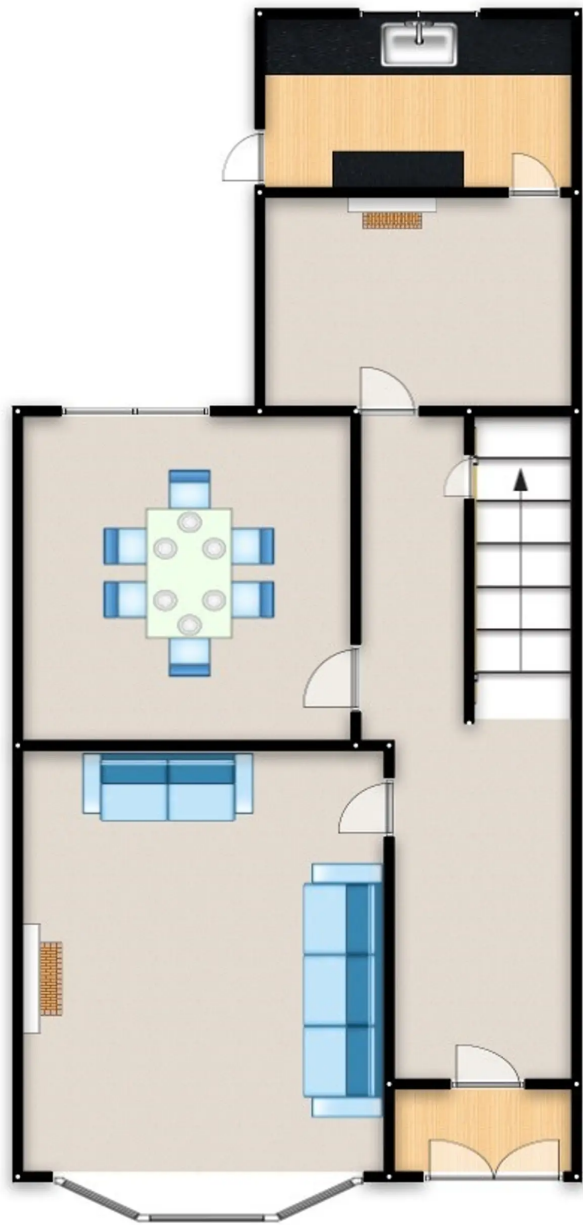
Two ceiling light points.

Outside WC

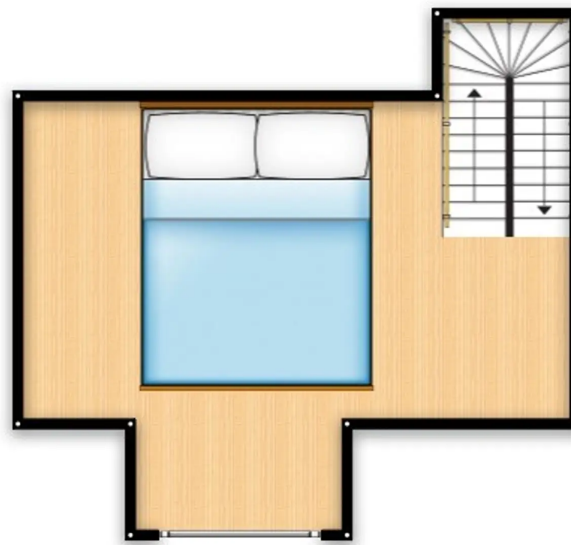
5' 3" x 2' 11" (1.6m x 0.9m)

WC.





HILLS



THE PROPERTY MISDESCRIPTIONS ACT 1991 The Agent has not tested any apparatus, equipment, fixtures and fittings or services and so cannot verify that they are in working order or fit for the purpose. A Buyer is advised to obtain verification from their Solicitor or Surveyor. References to the Tenure of a Property are based on information supplied by the Seller. The Agent has not had sight of the title documents. A Buyer is advised to obtain verification from their Solicitor. You are advised to check the availability of this property before travelling any distance to view. Every effort and precaution has been made to ensure these particulars are correct and not misleading but their accuracy is not guaranteed nor do they form part of any contract. If there is any point which is of particular importance to you, please contact us and we will provide any information you require. This is advisable, particularly if you intend to travel some distance to view the property. The mention of any appliances and services within these details does not imply that they are in full and efficient working order. These particulars are in draft form awaiting Vendors confirmation of their accuracy. These details must therefore be taken as a guide only.



HILLS