

Wentworth Avenue

Salford



£240,000

Wentworth Avenue

Salford

STOP! Are you looking for a spacious, four bedroom family home? Well LOOK NO FURTHER! This property could be the one for you! With a contemporary fitted kitchen and stylish features, viewing is highly recommended!

Council Tax band: B

Tenure: Freehold

- Spacious Four Bedroom Family Home
- Within Walking Distance of Salford Royal Hospital, Local Schooling and Buile Hill Park
- Lounge and Dining Rooms Separated via an Archway
- Beautiful Exposed Brick Hallway that is Complemented by a Wooden Staircase
- Contemporary Fitted Kitchen and a Modern, Three-Piece Family Bathroom
- Four Generously Sized Bedrooms
- Main Bedroom Benefits from an Exposed Brick Wall, Creating a Contemporary Space
- Driveway to the Front Providing Off-Road Parking, and a Large Garden to the Rear with Mature Plants, Laid-to-Lawn Grass, Paving and a Pond
- Close to Excellent Transport Links into Salford Quays, Media City and Manchester City Centre
- Viewing is Highly Recommended!



Entrance Hallway

Featuring a brick feature wall. Complete with ceiling spotlights, wall mounted radiator and laminate flooring.

Lounge

14' 4" x 13' 2" (4.38m x 4.01m)

Complete with a ceiling light point, single glazed window and wall mounted radiator. Fitted with laminate flooring.

Kitchen

13' 4" x 9' 11" (4.06m x 3.02m)

Featuring complementary fitted units with integral hob and oven. Space for a washer and fridge freezer.

Complete with a ceiling light point, double glazed window and tile flooring.

Dining Room

11' 1" x 10' 0" (3.38m x 3.04m)

Complete with a ceiling light point, double glazed window and wall mounted radiator. Fitted with laminate flooring.

Utility Room

6' 10" x 4' 7" (2.08m x 1.39m)

Complete with tiled flooring.

Landing

Complete with ceiling spotlights.

Bedroom One

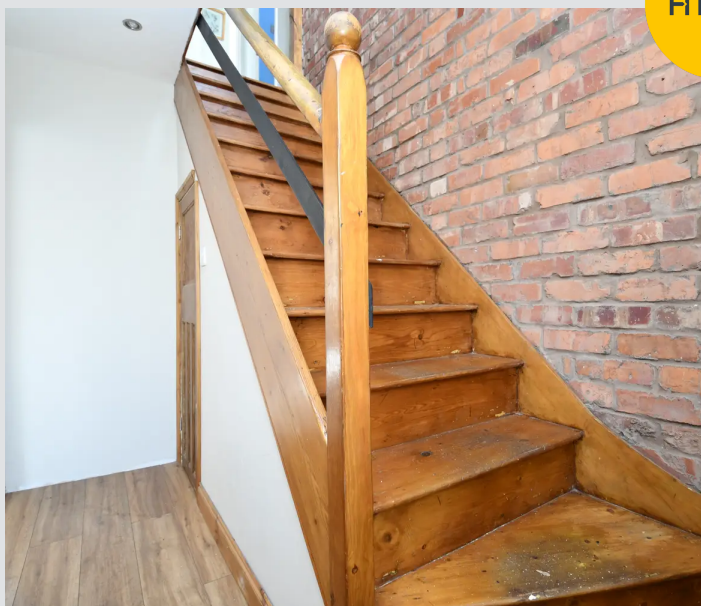
14' 2" x 10' 0" (4.33m x 3.05m)

Complete with a ceiling light point, double glazed window and laminate flooring.

Bedroom Two

13' 5" x 9' 5" (4.08m x 2.86m)

Complete with a ceiling light point, double glazed window and wall mounted radiator. Fitted with laminate flooring.



Bedroom Three

11' 7" x 9' 2" (3.54m x 2.80m)

Complete with a ceiling light point, double glazed window and wall mounted radiator. Fitted with carpet flooring.

Bedroom Four

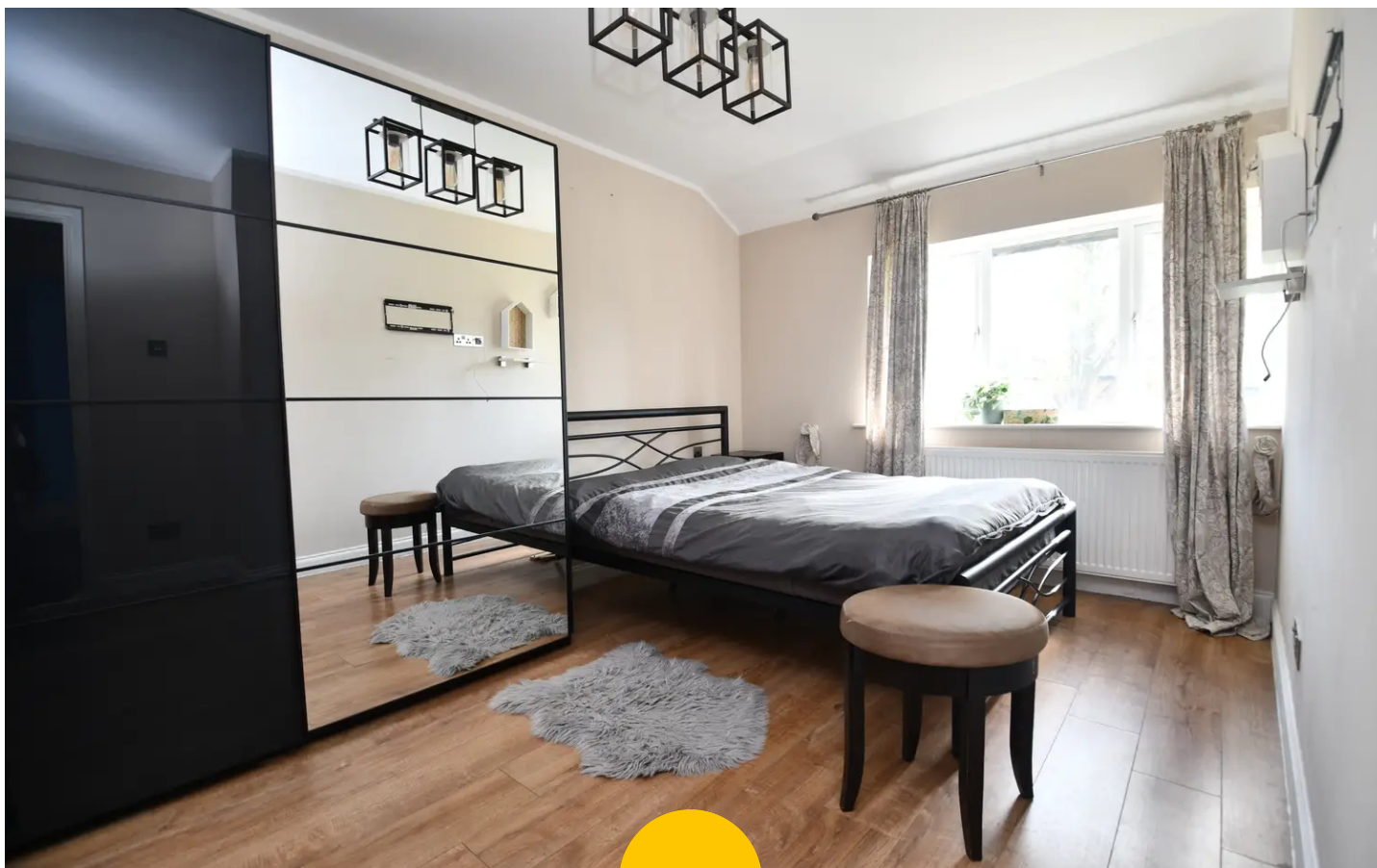
10' 0" x 8' 11" (3.04m x 2.72m)

Complete with ceiling spotlights, double glazed window and wall mounted radiator. Fitted with laminate flooring.

Bathroom

7' 11" x 7' 0" (2.41m x 2.14m)

Featuring a three-piece suite including bath, hand wash basin and W.C. Complete with ceiling spotlights and double glazed window. Fitted with tiled walls and flooring.







Hills | Salfords Estate Agent

Hills Residential, Sentinel House Albert Street - M30 0SS

0161 707 4900

sales@hills.agency

www.hills.agency/



THE PROPERTY MISDESCRIPTIONS ACT 1991 The Agent has not tested any apparatus, equipment, fixtures and fittings or services and so cannot verify that they are in working order or fit for the purpose. A Buyer is advised to obtain verification from their Solicitor or Surveyor. References to the Tenure of a Property are based on information supplied by the Seller. The Agent has not had sight of the title documents. A Buyer is advised to obtain verification from their Solicitor. You are advised to check the availability of this property before travelling any distance to view. Every effort and precaution has been made to ensure these particulars are correct and not misleading but their accuracy is not guaranteed nor do they form part of any contract. If there is any point which is of particular importance to you, please contact us and we will provide any information you require. This is advisable, particularly if you intend to travel some distance to view the property. The mention of any appliances and services within these details does not imply that they are in full and efficient working order. These particulars are in draft form awaiting Vendors confirmation of their accuracy. These details must therefore be taken as a guide only.