



13 Oxford Street, Eccles

Manchester



In Excess of £170,000

13 Oxford Street

Eccles, Manchester

*****CHAIN FREE*** PERFECT FIRST BUY OR INVESTMENT!**

**CLOSE TO MANY LOCAL AMENITIES! SPACIOUS 2
DOUBLE BEDROOM HOME!**

Council Tax band: A

Tenure: Freehold

- PERFECT INVESTMENT OPPORTUNITY
- CHAIN FREE
- TWO DOUBLE BEDROOMS
- TWO SPACIOUS RECEPTION ROOMS
- FITTED KITCHEN & BATHROOM
- WALKING DISTANCE TO MANY LOCAL AMENITIES
- EASILY COMMUTABLE TO MANCHESTER CITY CENTRE
BY TRAM, TRAIN & BUS



HILLS



Entrance Hallway

Complete with a ceiling light point and laminate flooring.

Reception Room One

10' 4" x 16' 4" (3.16m x 4.99m)

Complete with a ceiling light point, double glazed window and wall mounted radiator. Fitted with carpet flooring.

Reception Room Two

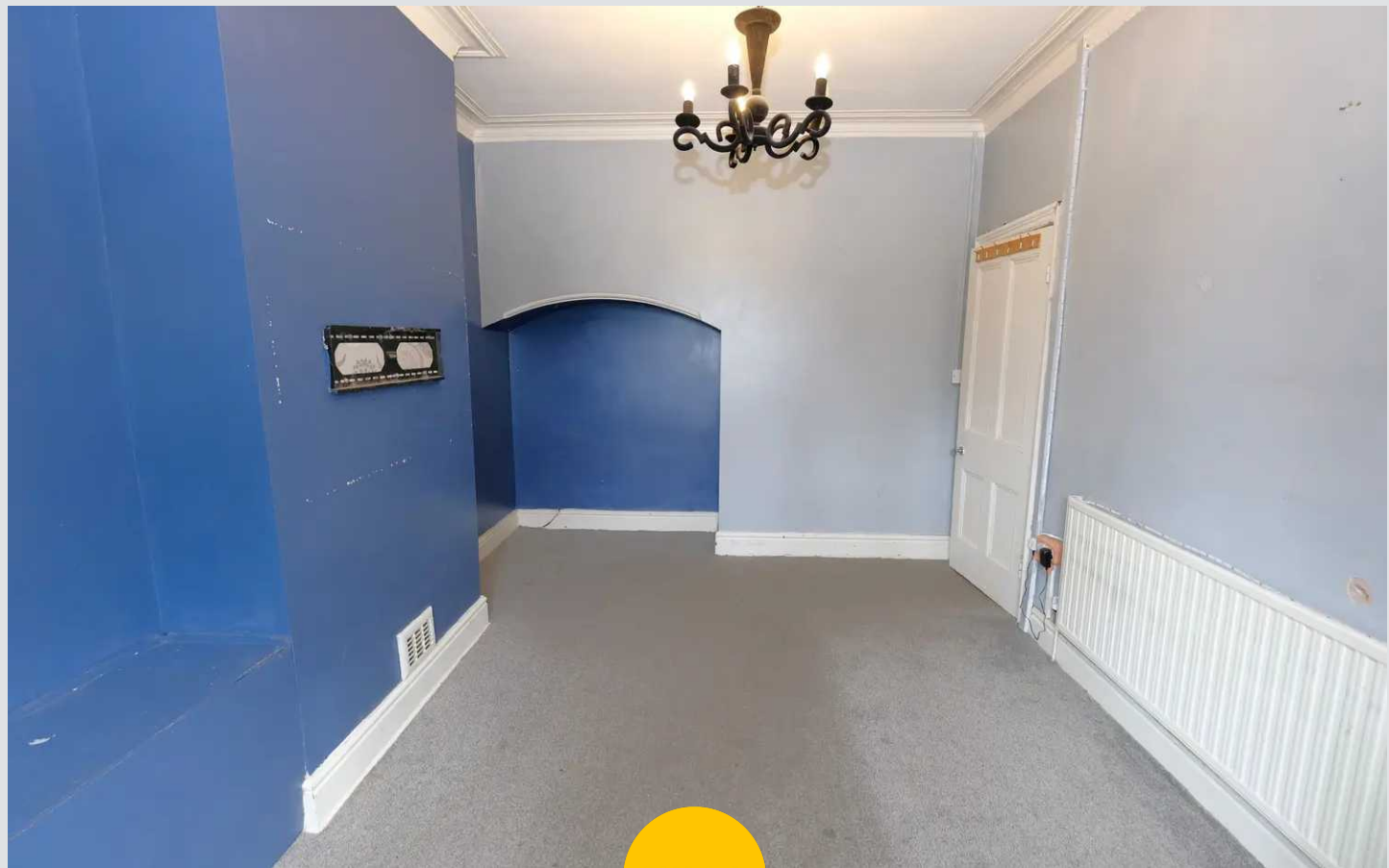
10' 0" x 13' 9" (3.05m x 4.19m)

Complete with a ceiling light point, double glazed window and wall mounted radiator. Fitted with lino flooring.

Kitchen

10' 4" x 6' 11" (3.16m x 2.10m)

Featuring complementary fitted units with a wooden side door. Complete with a ceiling light point, double glazed window and wall mounted radiator. Fitted with lino flooring.



HILLS

Landing

Complete with a ceiling light point and carpet flooring.

Bedroom One

13' 8" x 12' 2" (4.17m x 3.70m)

Complete with a ceiling light point, double glazed window and wall mounted radiator. Fitted with carpet flooring.

Bedroom Two

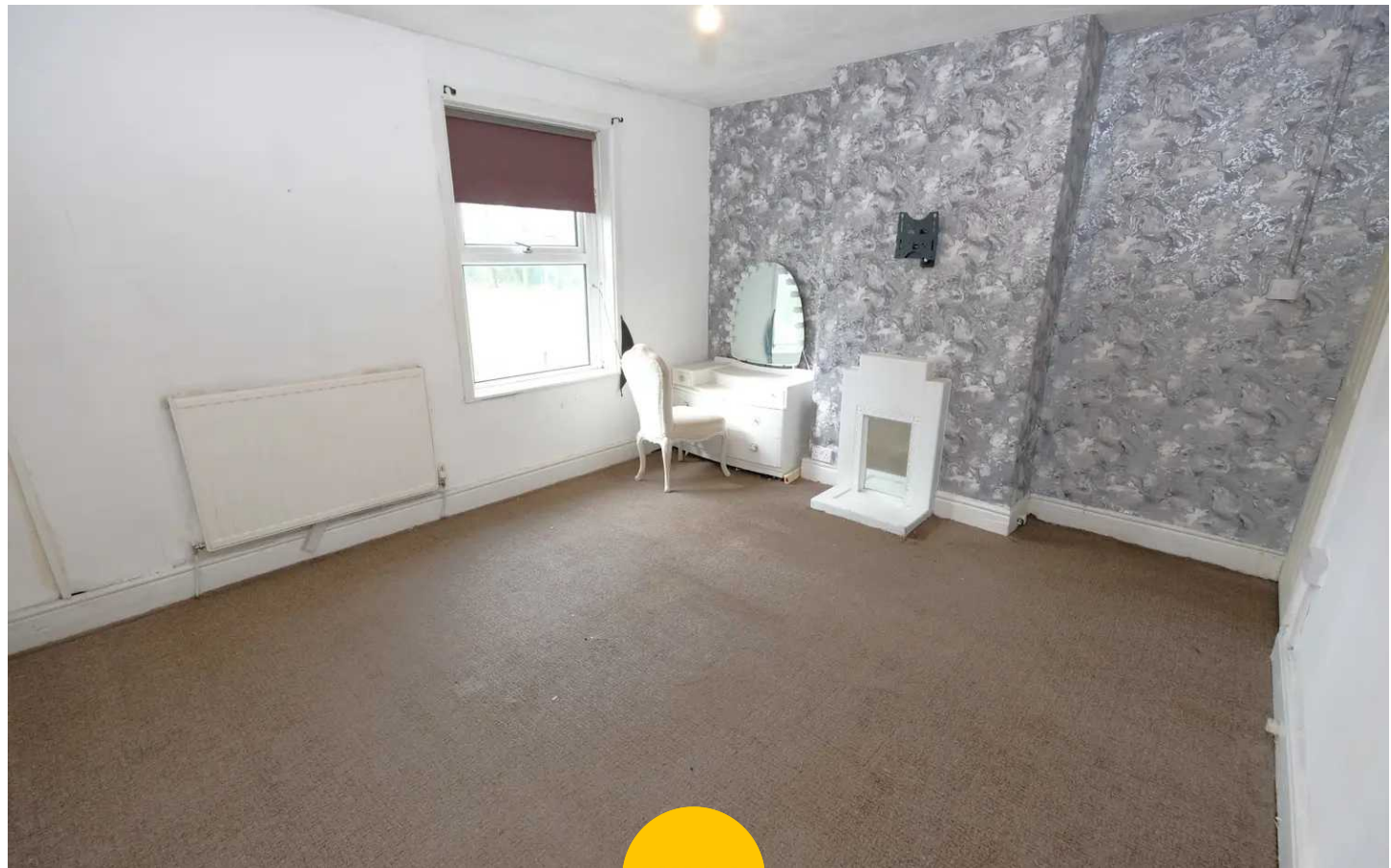
10' 10" x 12' 1" (3.31m x 3.68m)

Complete with a ceiling light point, double glazed window and wall mounted radiator. Fitted with carpet flooring.

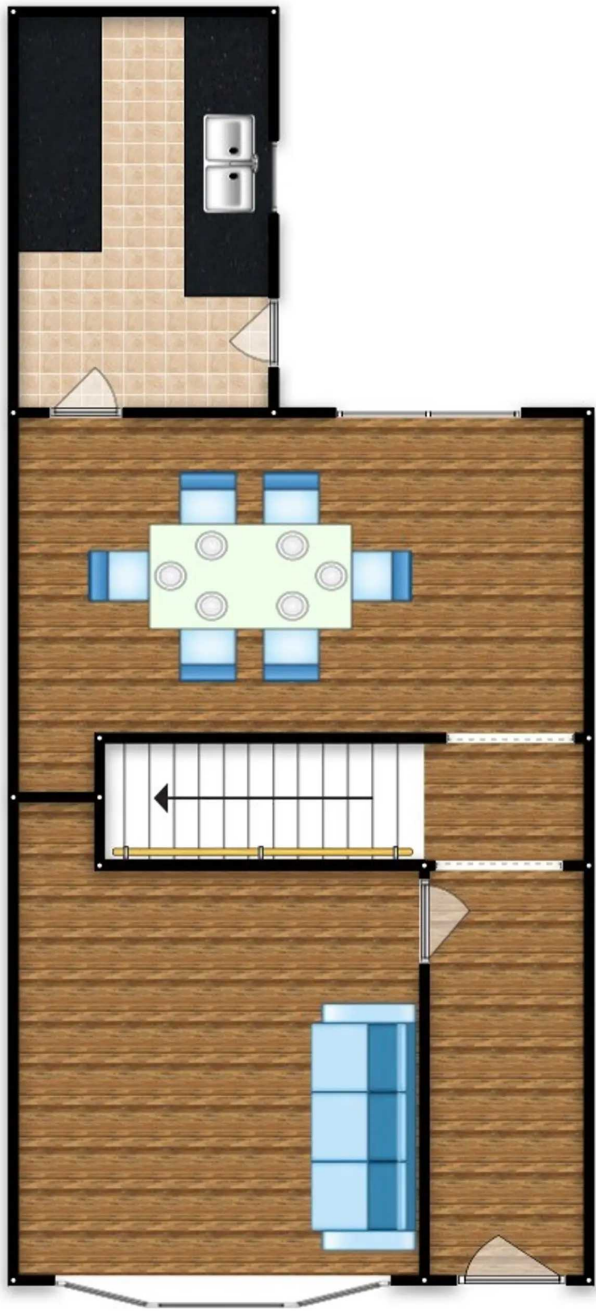
Bathroom

7' 1" x 10' 6" (2.16m x 3.21m)

Featuring a three-piece suite including a bath, hand wash basin and W.C. Complete with a ceiling light point, double glazed window and wall mounted radiator. Fitted with lino flooring.









Hills | Salfords Estate Agent

Hills Residential, Sentinel House Albert Street - M30 0SS

0161 707 4900

sales@hills.agency

www.hills.agency/



THE PROPERTY MISDESCRIPTIONS ACT 1991 The Agent has not tested any apparatus, equipment, fixtures and fittings or services and so cannot verify that they are in working order or fit for the purpose. A Buyer is advised to obtain verification from their Solicitor or Surveyor. References to the Tenure of a Property are based on information supplied by the Seller. The Agent has not had sight of the title documents. A Buyer is advised to obtain verification from their Solicitor. You are advised to check the availability of this property before travelling any distance to view. Every effort and precaution has been made to ensure these particulars are correct and not misleading but their accuracy is not guaranteed nor do they form part of any contract. If there is any point which is of particular importance to you, please contact us and we will provide any information you require. This is advisable, particularly if you intend to travel some distance to view the property. The mention of any appliances and services within these details does not imply that they are in full and efficient working order. These particulars are in draft form awaiting Vendors confirmation of their accuracy. These details must therefore be taken as a guide only.