



Normanton Avenue

Salford



£220,000

Normanton Avenue

Salford

*****LARGE PLOT***** Just a short walk from Salford Royal Hospital, at the end of a quiet cul-de-sac is this **THREE BEDROOM SEMI-DETACHED PROPERTY!** Situated on a generous plot with the potential for development subject to planning permission. Council Tax band: A

Tenure: Freehold

- Three Bedroom Family Home Just a Short Walk from Salford Royal Hospital
- Situated on a Generous Plot, with Gardens to the Front, Side and Rear of the Property
- Potential for Development Subject to Planning Permissions
- Family Lounge and a Dining Room with Patio Doors to the Rear
- Fitted Kitchen and a Downstairs W/C
- Three-Piece Family Bathroom
- Situated at the End of a Quiet Cul-de-Sac
- Close to Excellent Transport Links into Salford Quays/Media City and the City Centre
- Great Family Home, Close to Local Schooling and Buile Hill Park
- Viewing is Highly Recommended!



HILLS



Lounge

13' 5" x 10' 6" (4.10m x 3.20m)

Ceiling light point, double glazed window, wall mounted radiator, power points and fire place.

Dining Room

13' 1" x 8' 10" (4.00m x 2.70m)

Ceiling light point, wall mounted radiator, patio doors, fireplace and power points.

Kitchen

9' 6" x 11' 6" (2.90m x 3.50m)

Fitted with a range of wall and base units with complementary work surfaces and integral sink and drainer unit. Integrated oven and hob with space for a washer and fridge freezer.

Ceiling light point, single glazed window and power points.

Downstairs WC

4' 3" x 2' 7" (1.30m x 0.80m)

Ceiling light point, single glazed window, hand wash basin and WC.

Bedroom One

13' 5" x 9' 10" (4.10m x 3.00m)

Ceiling light point, single glazed window, wall mounted radiator and power point.

Bedroom Two

12' 6" x 8' 6" (3.80m x 2.60m)

Ceiling light point, single glazed window, wall mounted radiator and power point.

Bedroom Three

10' 6" x 8' 10" (3.20m x 2.70m)

Ceiling light point, single glazed window, wall mounted radiator and power point.

Bathroom

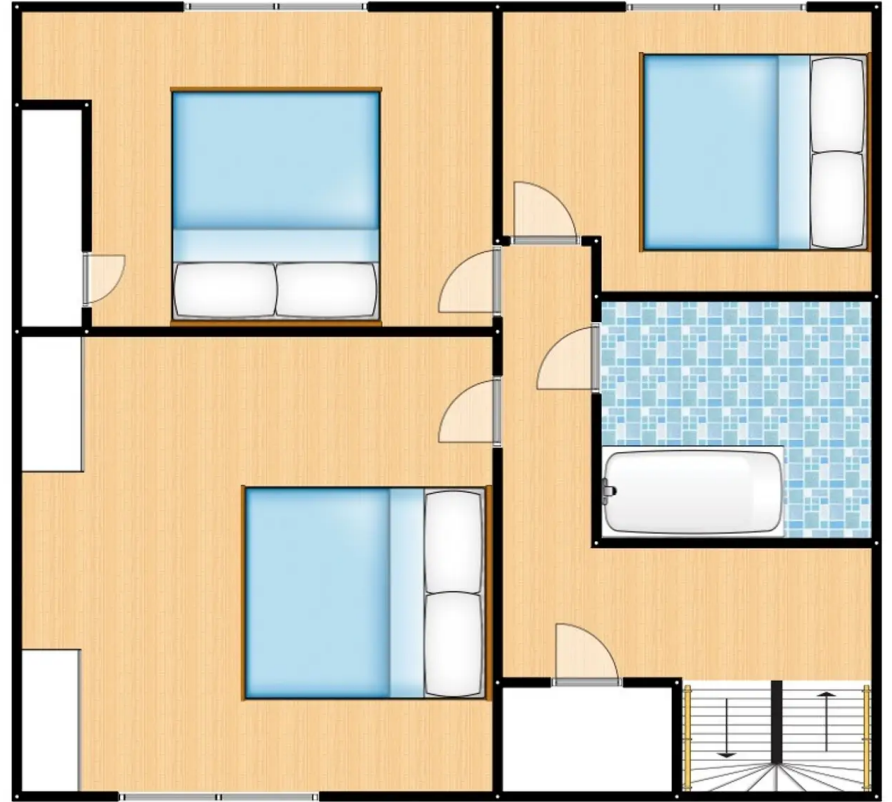
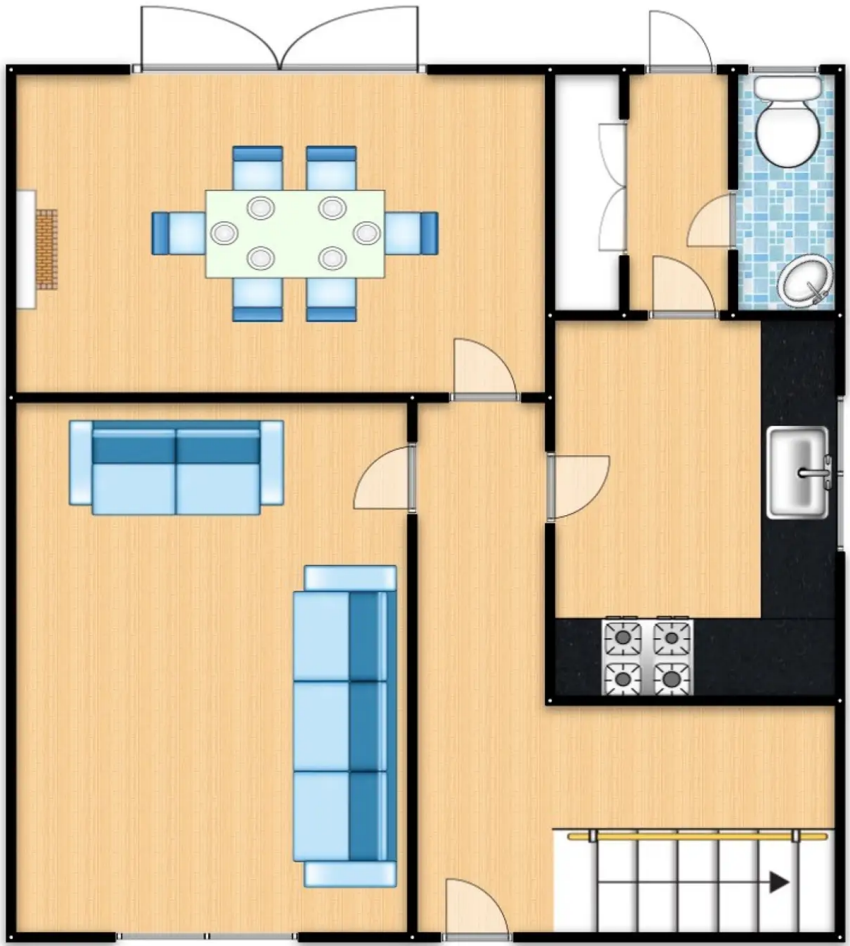
7' 10" x 5' 3" (2.40m x 1.60m)

Fitted with a three piece suite including a hand wash basin, WC and bath with overhead shower. Ceiling light point, single glazed window and heated towel rail.



HILLS







Hills | Salfords Estate Agent

Hills Residential, Sentinel House Albert Street - M30 0SS

0161 707 4900

sales@hills.agency

www.hills.agency/



THE PROPERTY MISDESCRIPTIONS ACT 1991 The Agent has not tested any apparatus, equipment, fixtures and fittings or services and so cannot verify that they are in working order or fit for the purpose. A Buyer is advised to obtain verification from their Solicitor or Surveyor. References to the Tenure of a Property are based on information supplied by the Seller. The Agent has not had sight of the title documents. A Buyer is advised to obtain verification from their Solicitor. You are advised to check the availability of this property before travelling any distance to view. Every effort and precaution has been made to ensure these particulars are correct and not misleading but their accuracy is not guaranteed nor do they form part of any contract. If there is any point which is of particular importance to you, please contact us and we will provide any information you require. This is advisable, particularly if you intend to travel some distance to view the property. The mention of any appliances and services within these details does not imply that they are in full and efficient working order. These particulars are in draft form awaiting Vendors confirmation of their accuracy. These details must therefore be taken as a guide only.