



Narbonne Avenue, Eccles

Manchester



£250,000

Narbonne Avenue

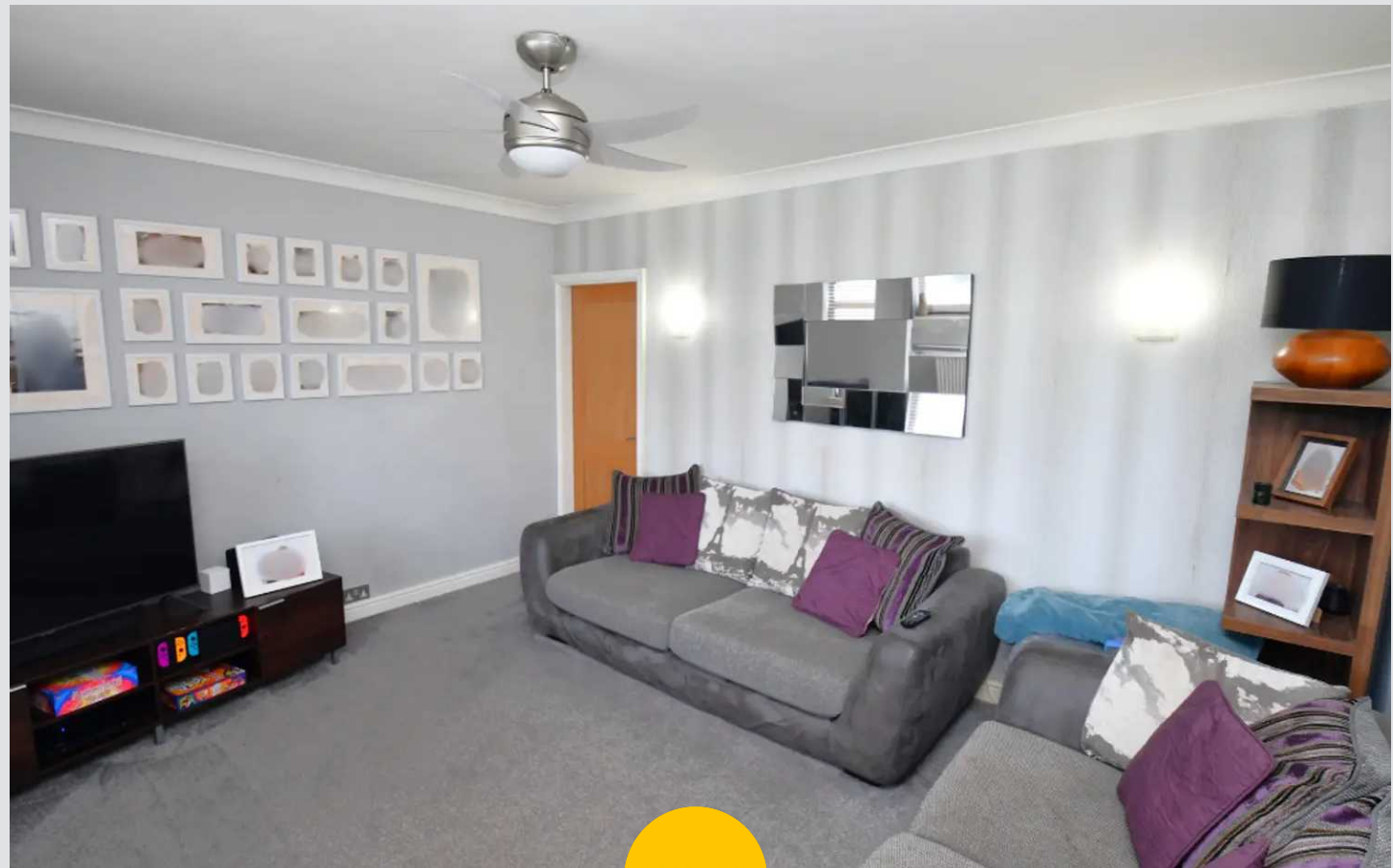
Eccles, Manchester

****Spacious three bedroom semi-detached family home, ideally situated on a generous corner plot with gardens to the front, side and rear****

Council Tax band: C

Tenure: Freehold

- Three Bedroom Semi-Detached Property Situated on a Generous Corner Plot
- Family Lounge and a Separate Dining Room
- Large, Modern Fitted Kitchen and the Added Benefit of a Conservatory
- Three Well-Proportioned Bedrooms
- Modern, Three-Piece Family Bathroom
- Benefits from a Driveway to the Front Providing Off-Road Parking
- Well-Presented Gardens to the Front, Side and Rear, with a Sizeable, South-Facing Garden to the Side Benefitting from Decking
- Within Catchment of Ellesmere Park High School, and Within Walking Distance of Monton Village
- Viewing is Highly Recommended!



HILLS



Porch

Complete with two double glazed windows and tiled flooring.

Entrance Hallway

Complete with a ceiling light point, wall mounted radiator and laminate flooring.

Lounge

13' 11" x 10' 11" (4.24m x 3.34m)

Complete with a ceiling light point, double glazed window and wall mounted radiator. Fitted with carpet flooring.

Dining Room

9' 10" x 7' 11" (2.99m x 2.41m)

Complete with a ceiling light point, wall mounted radiator and laminate flooring.

Kitchen

11' 11" x 9' 11" (3.64m x 3.03m)

Featuring complementary wall and base units with integral hob and oven. Space for a dishwasher and fridge freezer. Complete with ceiling spotlights, two double glazed windows and laminate flooring.

Conservatory

12' 4" x 8' 5" (3.76m x 2.57m)

Complete with a ceiling light point, wall mounted radiator and carpet flooring.

Bedroom One

13' 11" x 8' 7" (4.23m x 2.62m)

Complete with a ceiling light point, double glazed window and wall mounted radiator. Fitted furniture and carpet flooring.

Bedroom Two

13' 9" x 10' 2" (4.19m x 3.10m)

Complete with a ceiling light point, double glazed window and wall mounted radiator. Carpet flooring.



HILLS



Bedroom Three

9' 7" x 7' 2" (2.92m x 2.18m)

Complete with a ceiling light point, double glazed window and wall mounted radiator. Carpet flooring.

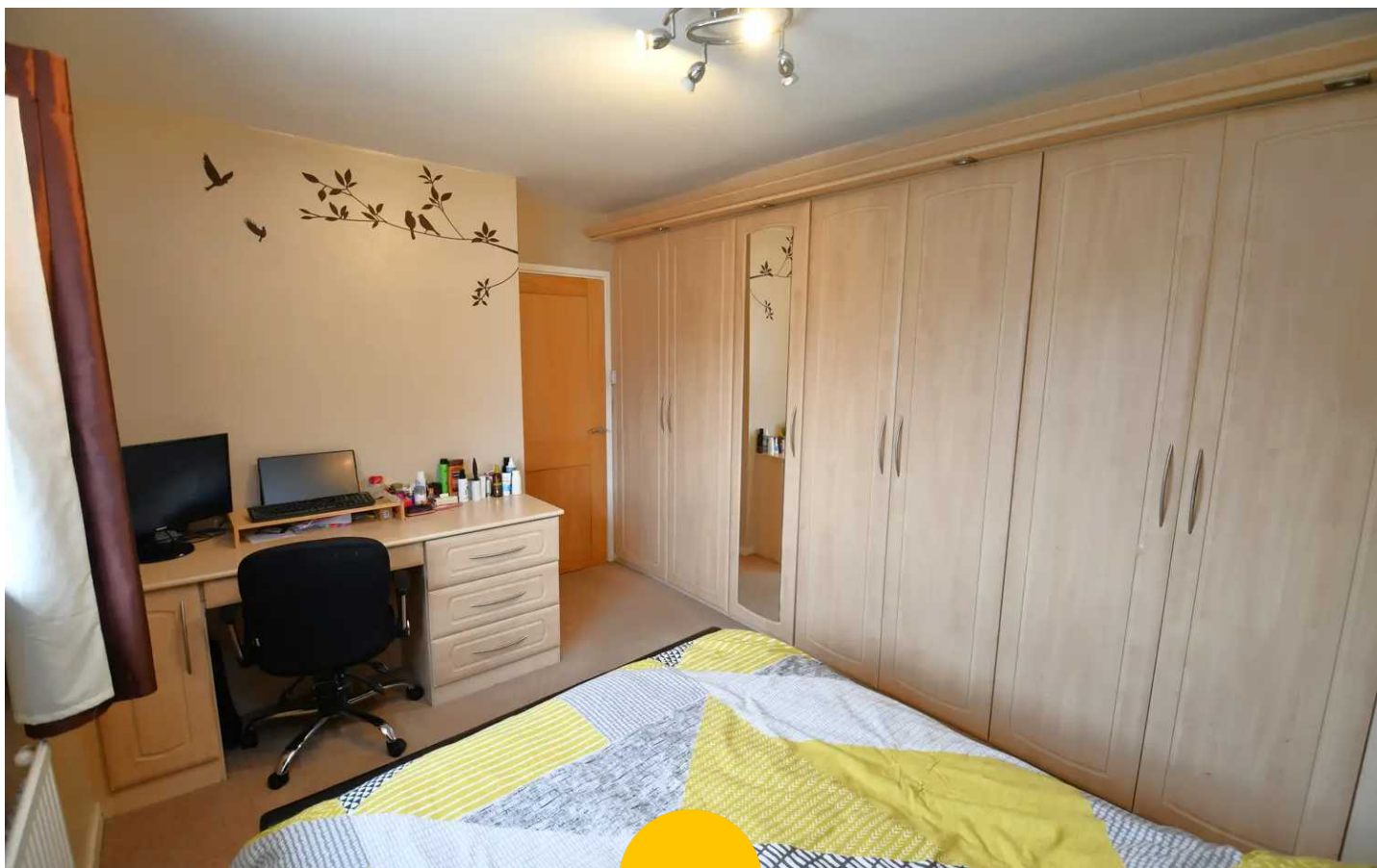
Bathroom

7' 7" x 5' 6" (2.30m x 1.67m)

Featuring a three-piece suite including a bath with shower over, hand wash basin and W.C. Complete with a ceiling light point, two double glazed windows and wall mounted radiator. Fitted with tiled walls and vinyl flooring.

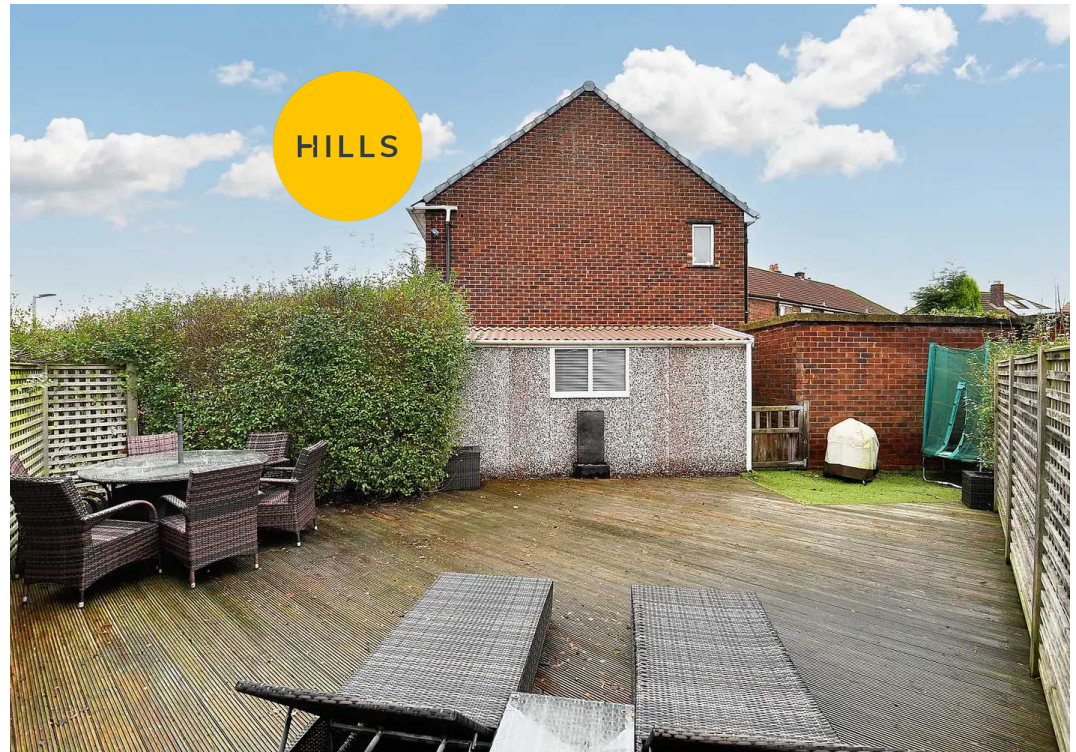
External

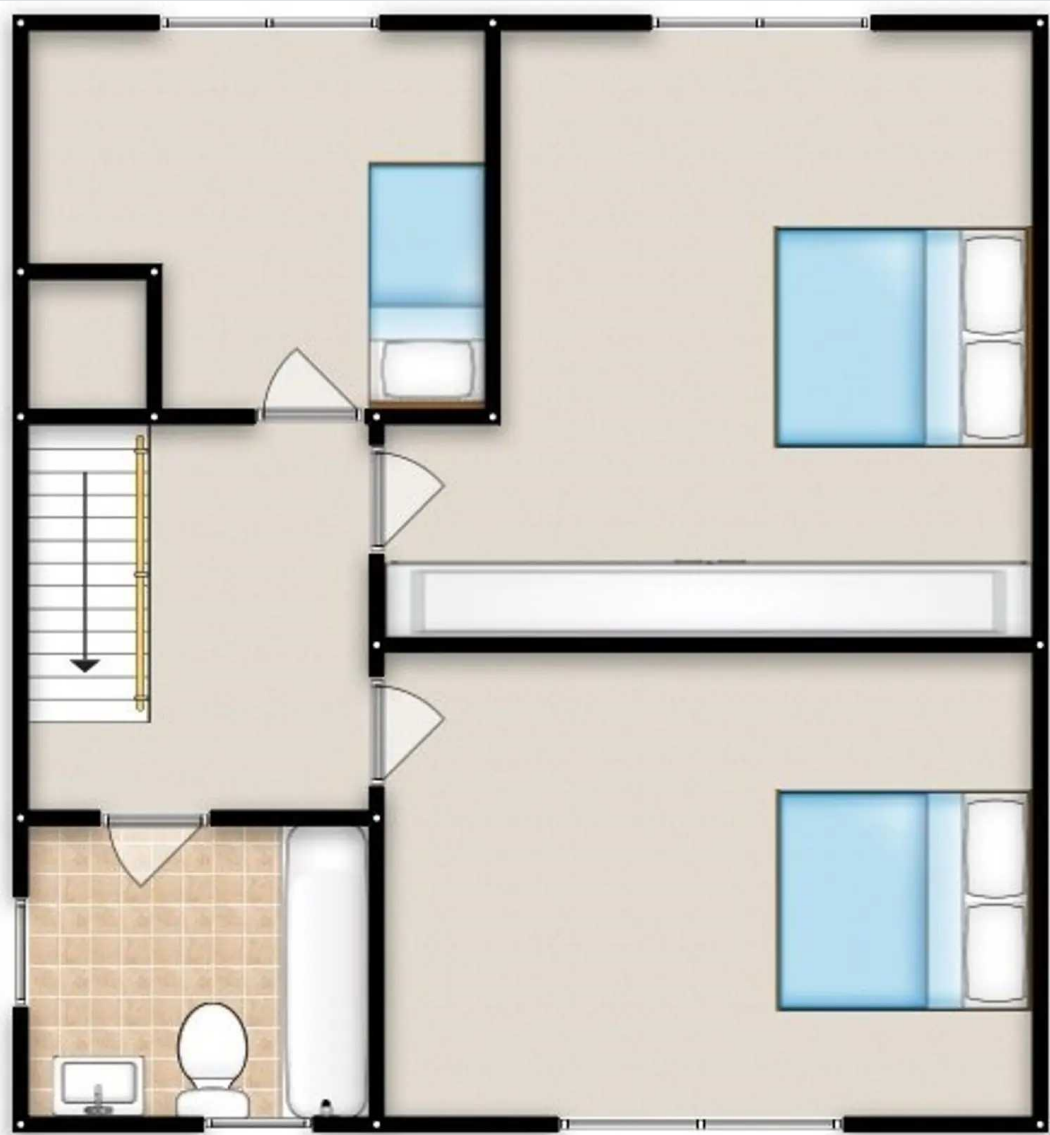
To the front of the property is a driveway providing off-road parking. Well presented gardens to the front and rear. Benefits from a generous decked side garden.



HILLS









Hills | Salfords Estate Agent

Hills Residential, Sentinel House Albert Street - M30 0SS

0161 707 4900

sales@hills.agency

www.hills.agency/



THE PROPERTY MISEDDESCRIPTIONS ACT 1991 The Agent has not tested any apparatus, equipment, fixtures and fittings or services and so cannot verify that they are in working order or fit for the purpose. A Buyer is advised to obtain verification from their Solicitor or Surveyor. References to the Tenure of a Property are based on information supplied by the Seller. The Agent has not had sight of the title documents. A Buyer is advised to obtain verification from their Solicitor. You are advised to check the availability of this property before travelling any distance to view. Every effort and precaution has been made to ensure these particulars are correct and not misleading but their accuracy is not guaranteed nor do they form part of any contract. If there is any point which is of particular importance to you, please contact us and we will provide any information you require. This is advisable, particularly if you intend to travel some distance to view the property. The mention of any appliances and services within these details does not imply that they are in full and efficient working order. These particulars are in draft form awaiting Vendors confirmation of their accuracy. These details must therefore be taken as a guide only.