



Liverpool Road, Eccles

Manchester



Offers Over £280,000

# Liverpool Road

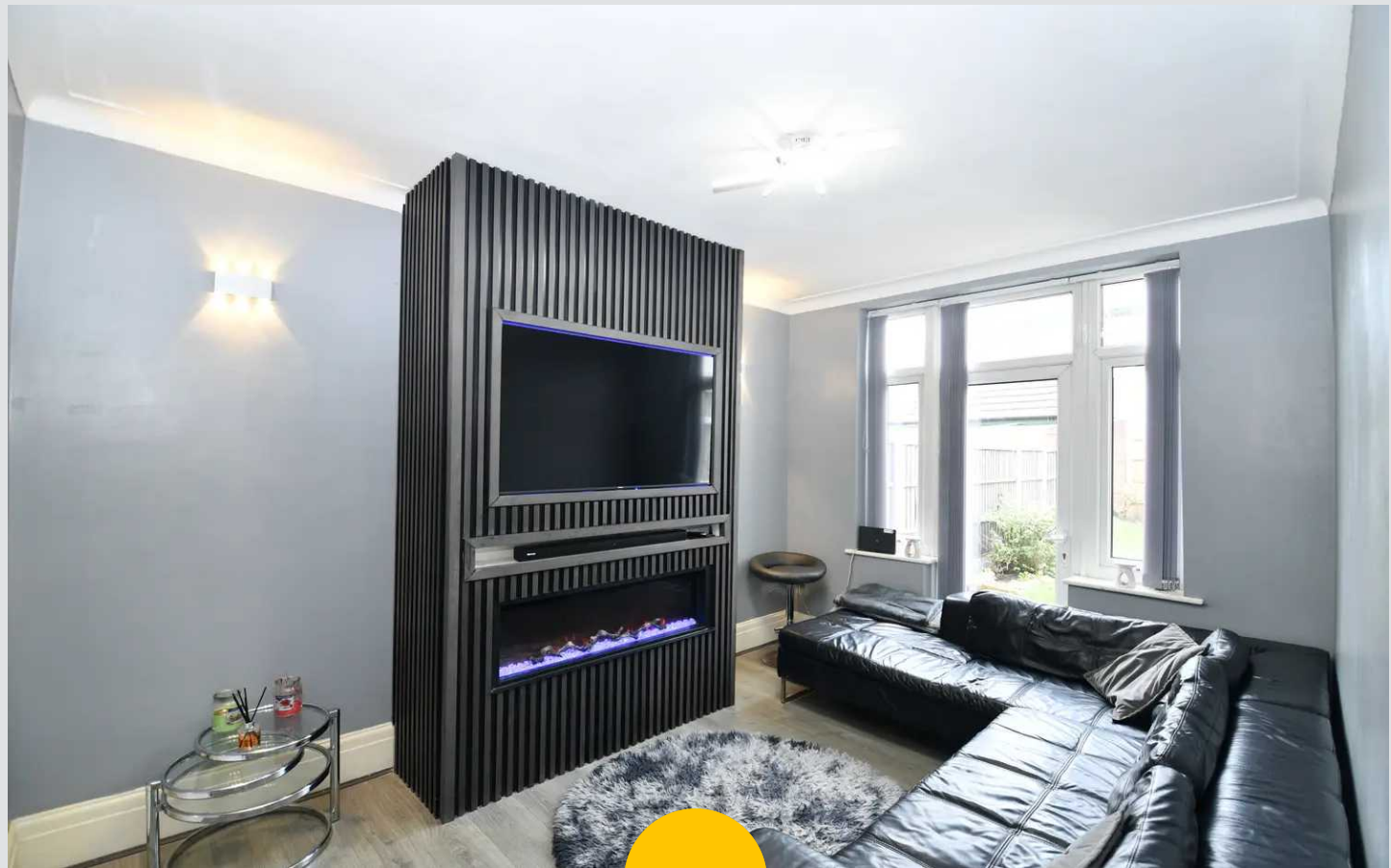
Eccles, Manchester

Impressive 1930's semi-detached house in sought-after Peel Green area. Bay fronted lounge, second reception room, light & airy fitted kitchen, 3 bedrooms (two with fitted wardrobes), stunning family bathroom, off-road parking, garage, spacious garden. Close to amenities & transport links. The perfect family home!

Council Tax band: B

Tenure: Leasehold

- Perfect Family Home in the Popular Peel Green Area
- Bay Fronted Lounge & Second Reception Room
- 17ft Fitted Kitchen
- Three Well Proportioned Bedrooms (Two with Fitted Wardrobes)
- Stunning Four Piece Family Bathroom Suite
- Off Road Parking for Multiple Cars & Garage
- Generous Sized Garden to the Rear
- Excellently Located Close to Amenities & Brilliant Transport Links



### Entrance Hallway

A welcoming entrance hallway complete with ceiling spotlights and wooden flooring.

### Lounge

11' 8" x 9' 8" (3.56m x 2.95m)

A spacious lounge complete with a ceiling light point, double glazed window and wood effect laminate flooring.

### Kitchen

16' 2" x 7' 8" (4.93m x 2.34m)

A well lit kitchen featuring complementary wall and base units with space for a cooker and fridge freezer. Complete with a ceiling light point, four double glazed windows and dark grey tiled flooring.

### Dining Room

11' 4" x 13' 2" (3.45m x 4.01m)

A bright dining room featuring an electric fire. Complete with ceiling light point, double glazed window and wall mounted radiator. Fitted with laminate flooring.

### Landing

Complete with ceiling spotlights and carpet flooring.

### Bedroom One

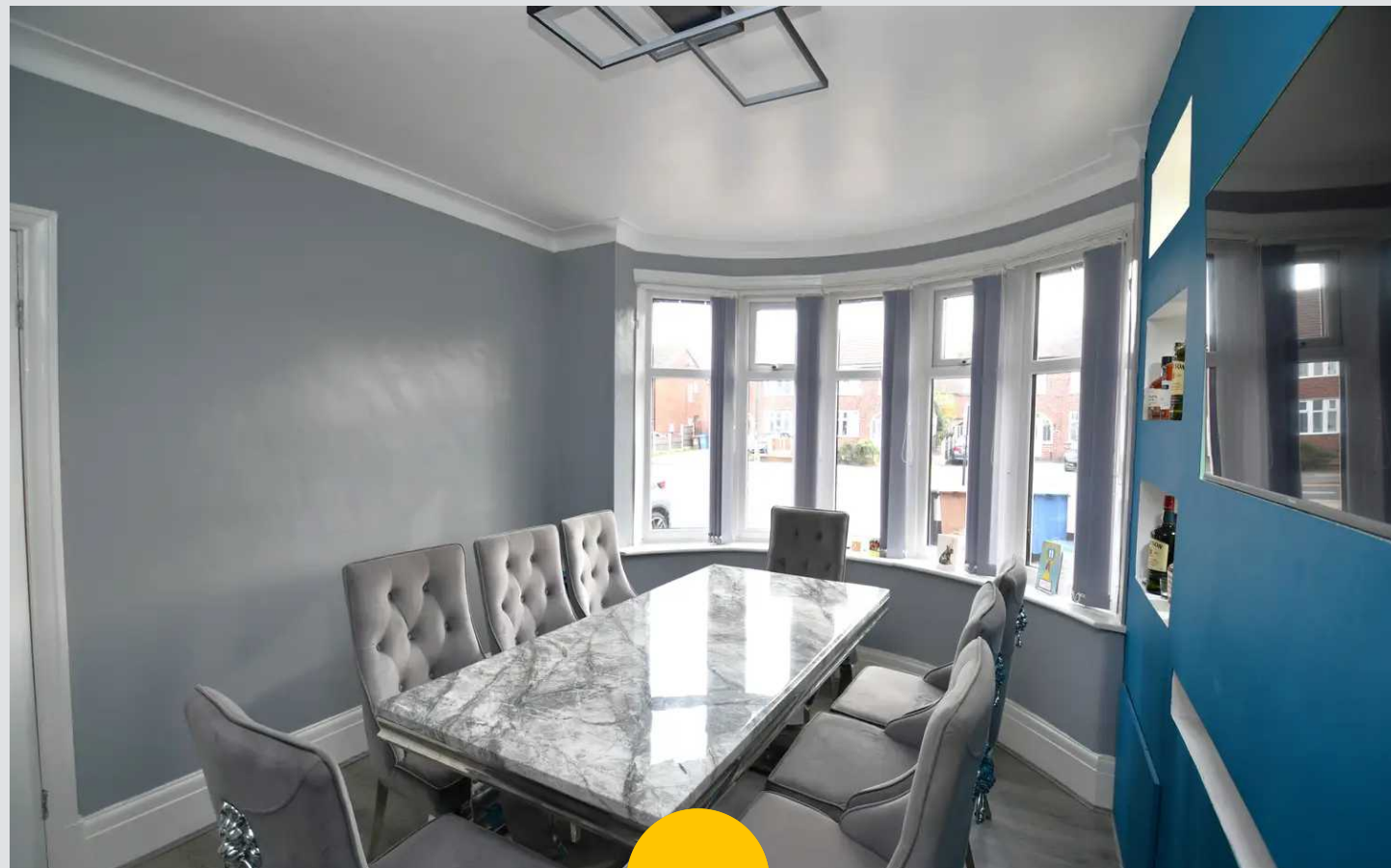
12' 7" x 10' 1" (3.84m x 3.07m)

A bright bedroom complete with ceiling spotlights, double glazed window and wall mounted radiator. Fitted with brown wood effect laminate flooring.

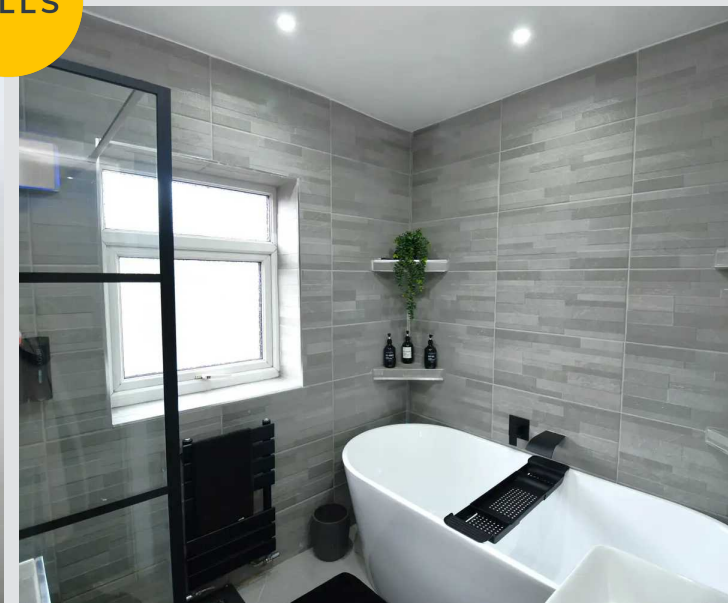
### Bedroom Two

13' 3" x 8' 7" (4.04m x 2.62m)

Complete with ceiling spotlights, double glazed window and wall mounted radiator. Fitted with wood effect laminate flooring.



HILLS



**Bedroom Three**

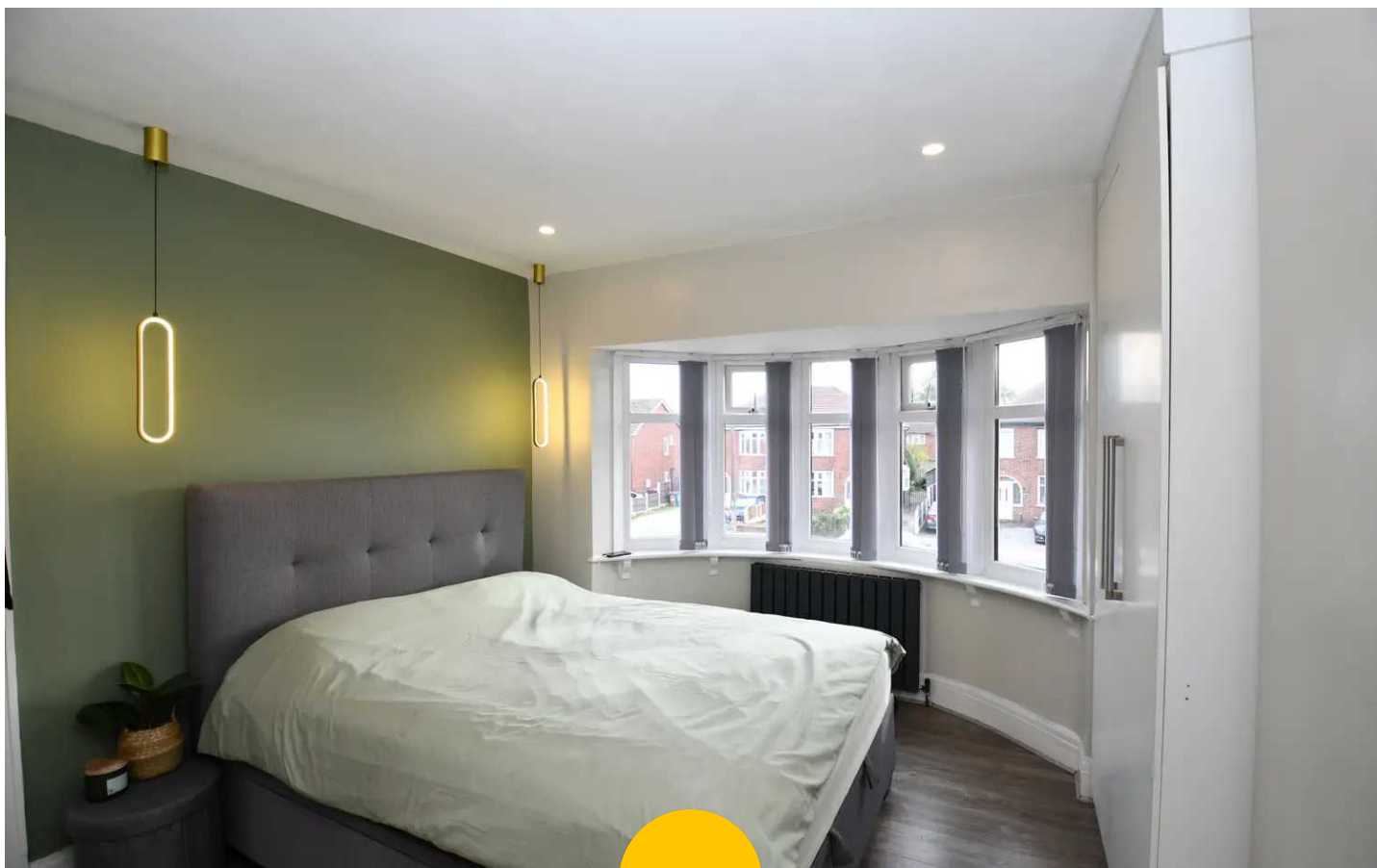
7' 4" x 6' 4" (2.24m x 1.93m)

Complete with a ceiling light point, double glazed window and wall mounted radiator. Fitted with laminate flooring.

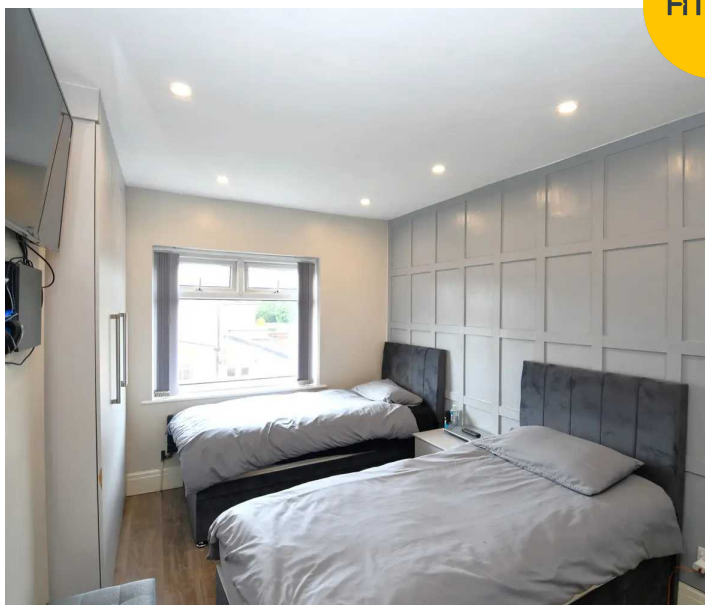
**Bathroom**

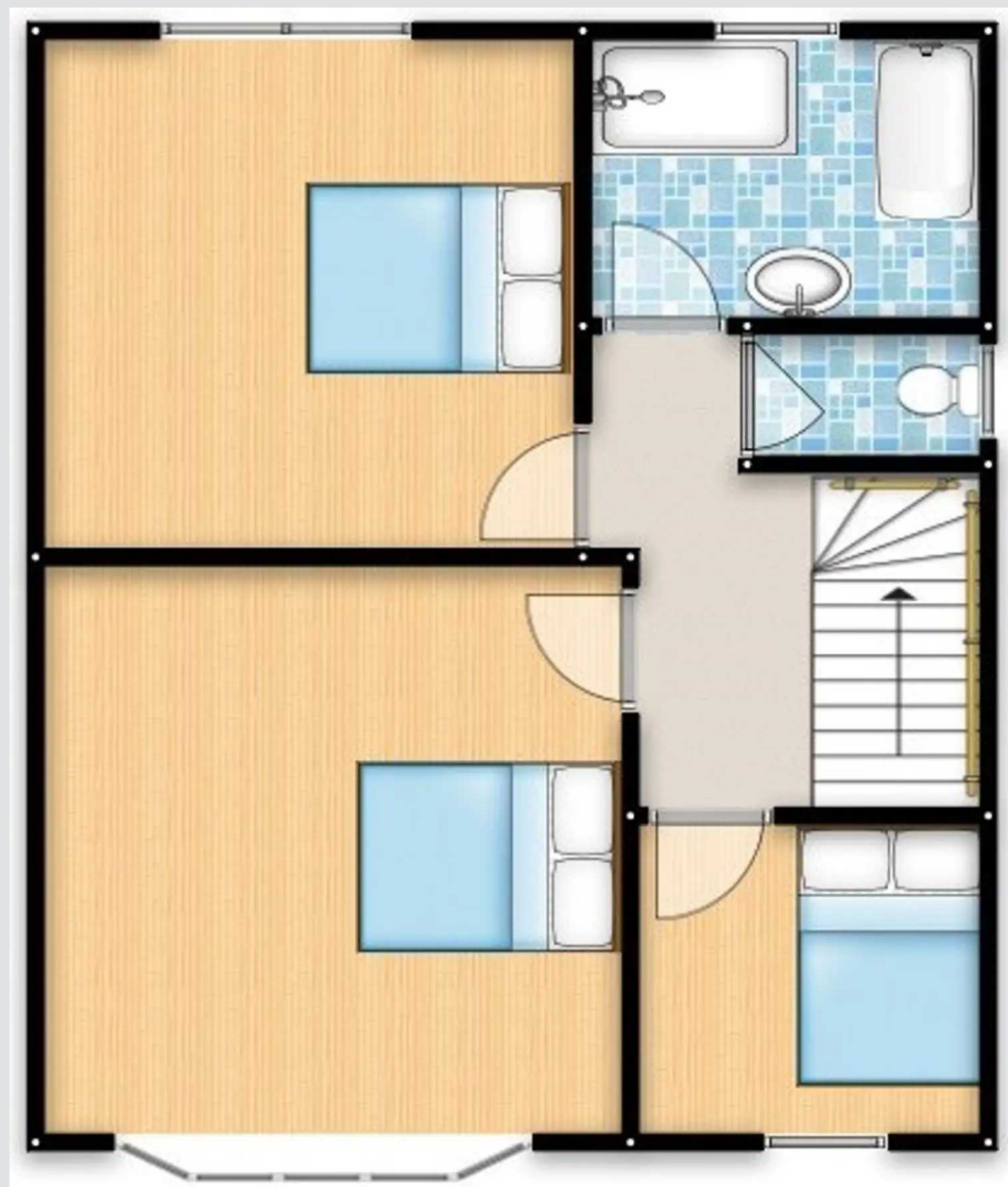
7' 6" x 6' 2" (2.29m x 1.88m)

A bright, modern bathroom complete with a three-piece suite including a bath, basin and W.C. Complete with ceiling spotlights, tiled walls and flooring.



HILLS







## Hills | Salfords Estate Agent

Hills Residential, Sentinel House Albert Street - M30 0SS

0161 707 4900

[sales@hills.agency](mailto:sales@hills.agency)

[www.hills.agency/](http://www.hills.agency/)



THE PROPERTY MISDESCRIPTIONS ACT 1991 The Agent has not tested any apparatus, equipment, fixtures and fittings or services and so cannot verify that they are in working order or fit for the purpose. A Buyer is advised to obtain verification from their Solicitor or Surveyor. References to the Tenure of a Property are based on information supplied by the Seller. The Agent has not had sight of the title documents. A Buyer is advised to obtain verification from their Solicitor. You are advised to check the availability of this property before travelling any distance to view. Every effort and precaution has been made to ensure these particulars are correct and not misleading but their accuracy is not guaranteed nor do they form part of any contract. If there is any point which is of particular importance to you, please contact us and we will provide any information you require. This is advisable, particularly if you intend to travel some distance to view the property. The mention of any appliances and services within these details does not imply that they are in full and efficient working order. These particulars are in draft form awaiting Vendors confirmation of their accuracy. These details must therefore be taken as a guide only.