



Ivory Close, Eccles

Manchester



£200,000

Ivory Close

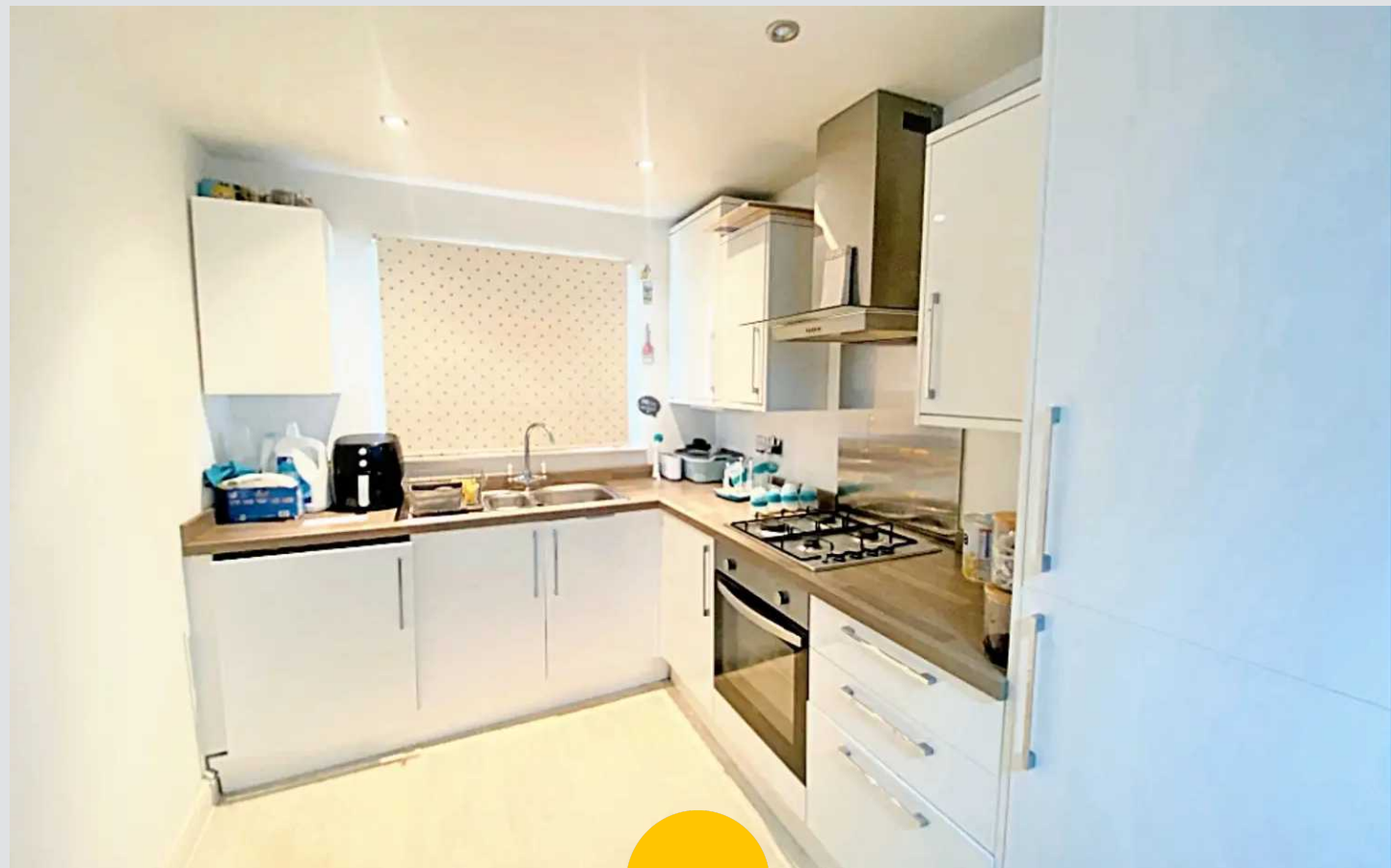
Eccles, Manchester

Modern three bed semi-detached house on a quiet cul de sac. Family lounge with natural light, sleek fitted kitchen/dining area. Three generous bedrooms, family bathroom + downstairs W.C. Well-maintained front/rear gardens and off-road parking. Close to amenities and transport links. Contact us to view.

Council Tax band: B

Tenure: Leasehold

- Modern Build Property
- Tucked Away on a Quiet Cul De Sac
- Family Lounge
- Modern Fitted Kitchen & Dining Area
- Three Generous Bedrooms
- Family Bathroom & Downstairs W.C.
- Gardens to both the Front & Rear
- Off Road Parking for Multiple Cars
- Surrounded by Excellent Amenities & Transport Links



HILLS



Entrance Hallway

Composite door to the front, ceiling light point, wall mounted radiator, storage cupboard and carpeted floors.

Lounge

14' 5" x 9' 7" (4.39m x 2.92m)

A spacious lounge complete with double glazed window and double glazed patio door to the rear, ceiling light point, wall mounted radiator and carpeted floors.

Kitchen

7' 5" x 16' 0" (2.26m x 4.88m)

A range of wall and base units with complementary work top surfaces, integrated sink and drainer unit, integrated oven and hob and integrated fridge/freezer with space for a washing machine. Double glazed window, inset spotlights, wall mounted radiator and vinyl floors.

W.C

2' 10" x 6' 2" (0.86m x 1.88m)

Two piece suite comprising of a low level WC and hand wash basin. Double glazed window, wall mounted radiator and vinyl floors.

Landing

Ceiling light point, storage cupboard and carpeted floors.

Bedroom One

8' 0" x 13' 10" (2.44m x 4.22m)

Fitted with two double glazed windows, ceiling light point, wall mounted radiator, built in storage and carpeted floors.

Bedroom Two

11' 5" x 7' 9" (3.48m x 2.36m)

Fitted with double glazed window, ceiling light point, wall mounted radiator and carpeted floors.



Bedroom Three

6' 3" x 9' 6" (1.91m x 2.90m)

Fitted with double glazed window, ceiling light point, wall mounted radiator and carpeted floors.

Bathroom

5' 9" x 7' 8" (1.75m x 2.34m)

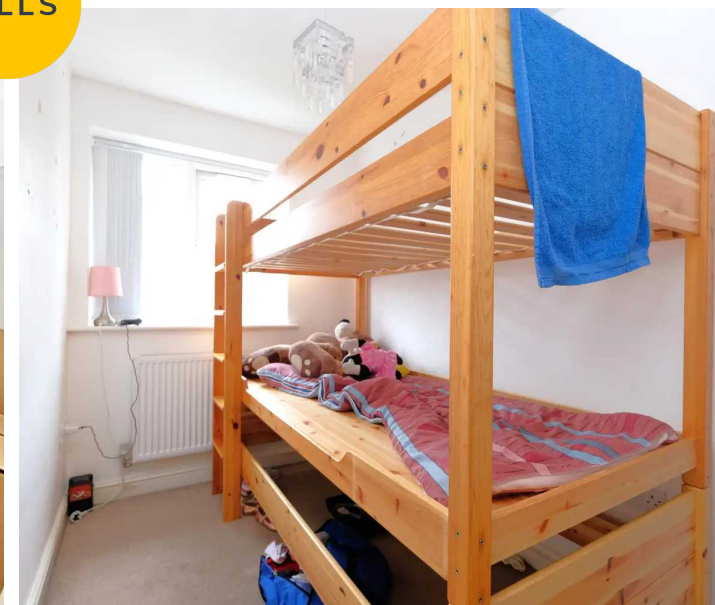
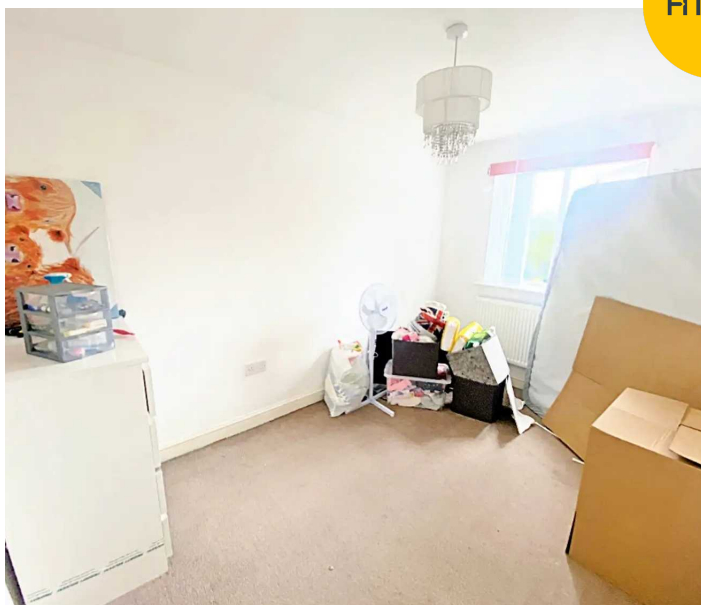
Three piece suite comprising of a low level WC, hand wash basin and a bath with shower over. Ceiling light point, wall mounted radiator, partially tiled walls and vinyl flooring.

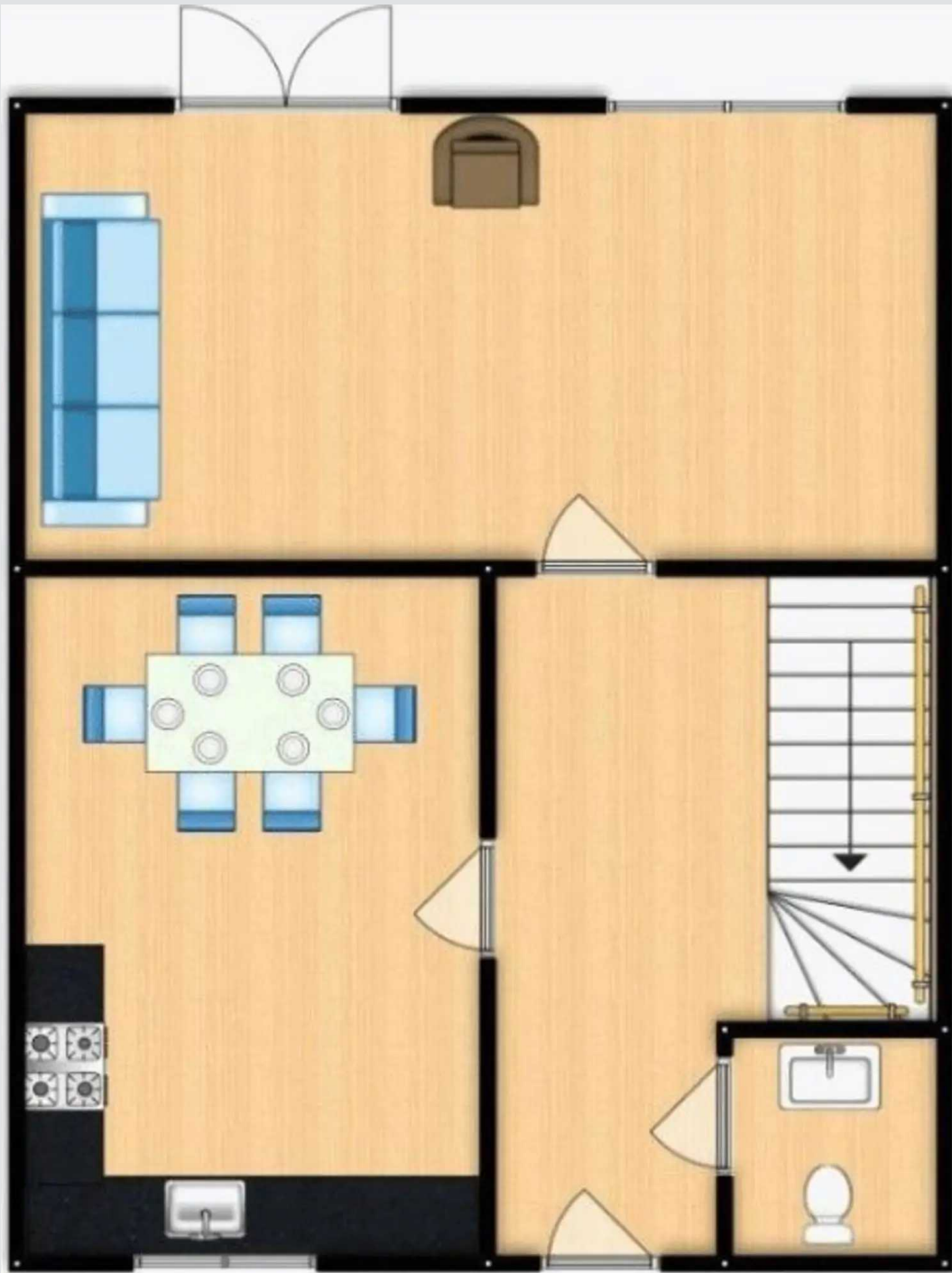
External

Double driveway to the front and to the rear is a private garden with side access. The rear garden has a laid to lawn grass and a patio area.



HILLS







Hills | Salfords Estate Agent

Hills Residential, Sentinel House Albert Street - M30 0SS

0161 707 4900

sales@hills.agency

www.hills.agency/



THE PROPERTY MISDESCRIPTIONS ACT 1991 The Agent has not tested any apparatus, equipment, fixtures and fittings or services and so cannot verify that they are in working order or fit for the purpose. A Buyer is advised to obtain verification from their Solicitor or Surveyor. References to the Tenure of a Property are based on information supplied by the Seller. The Agent has not had sight of the title documents. A Buyer is advised to obtain verification from their Solicitor. You are advised to check the availability of this property before travelling any distance to view. Every effort and precaution has been made to ensure these particulars are correct and not misleading but their accuracy is not guaranteed nor do they form part of any contract. If there is any point which is of particular importance to you, please contact us and we will provide any information you require. This is advisable, particularly if you intend to travel some distance to view the property. The mention of any appliances and services within these details does not imply that they are in full and efficient working order. These particulars are in draft form awaiting Vendors confirmation of their accuracy. These details must therefore be taken as a guide only.